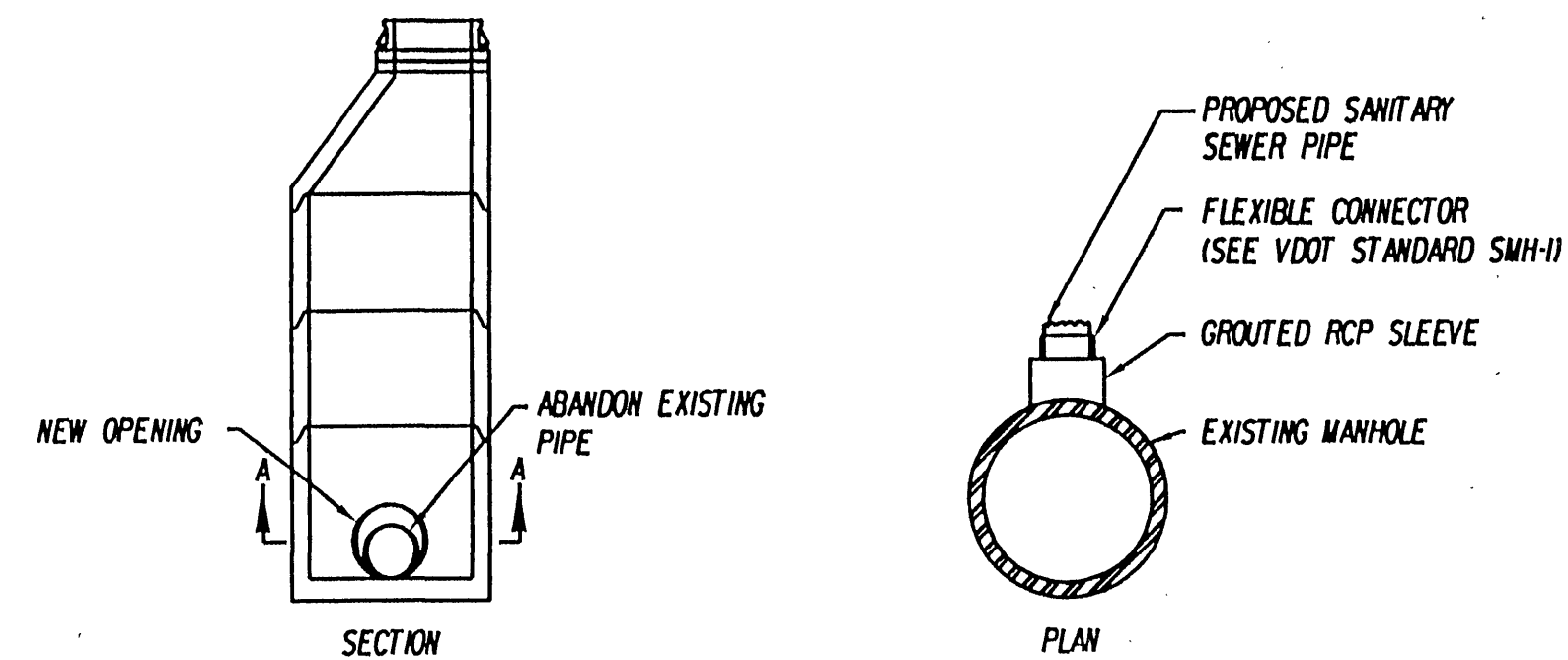


## UTILITY ADJUSTMENT DETAILS

DESIGN FEATURES RELATING TO CONSTRUCTION  
OR TO REGULATION AND CONTROL OF TRAFFIC  
MAY BE SUBJECT TO CHANGE AS DEEMED  
NECESSARY BY THE DEPARTMENT

SECTION C	REVISED	FHWA REGION	STATE	FEDERAL AID	ROUTE	STATE	SHEET NO.
				PROJECT			
		3	VA.			CITY OF ROANOKE 0011-128-F02,C-501 CITY OF SALEM 0011-129-F05,C-501	16125

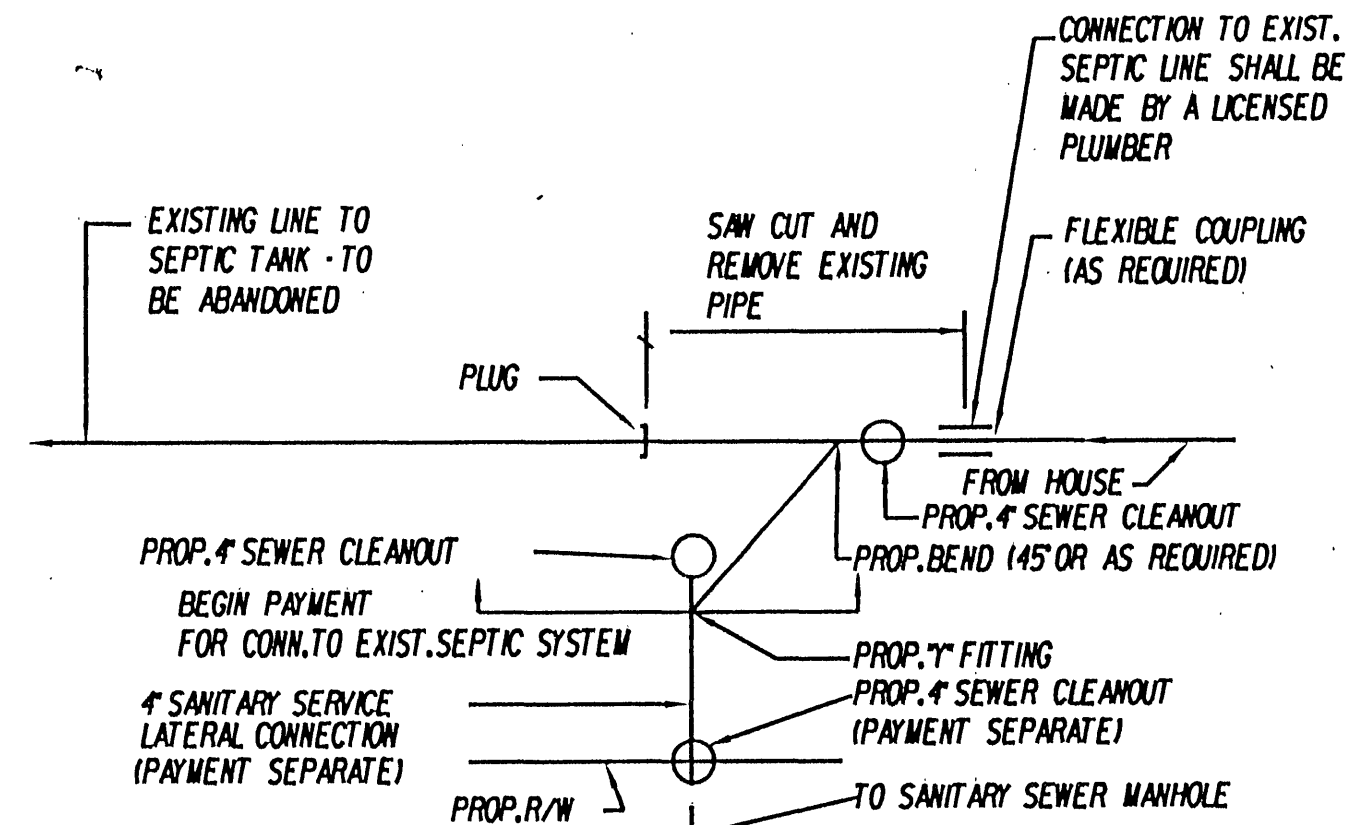
CONNECT TO EXISTING MANHOLE



1. ABANDON EXISTING PIPE OPENING.
2. PROVIDE NEW PIPE OPENING.
3. INSERT AND GROUT NEW RCP, CLASS III, SLEEVE.
4. INSERT NEW FLEXIBLE CONNECTOR.
5. PROVIDE RESHAPING OF INVERT IN ACCORDANCE WITH VDOT STANDARD IS-1.

NO SCALE

CONNECT TO EXISTING SEPTIC SYSTEM

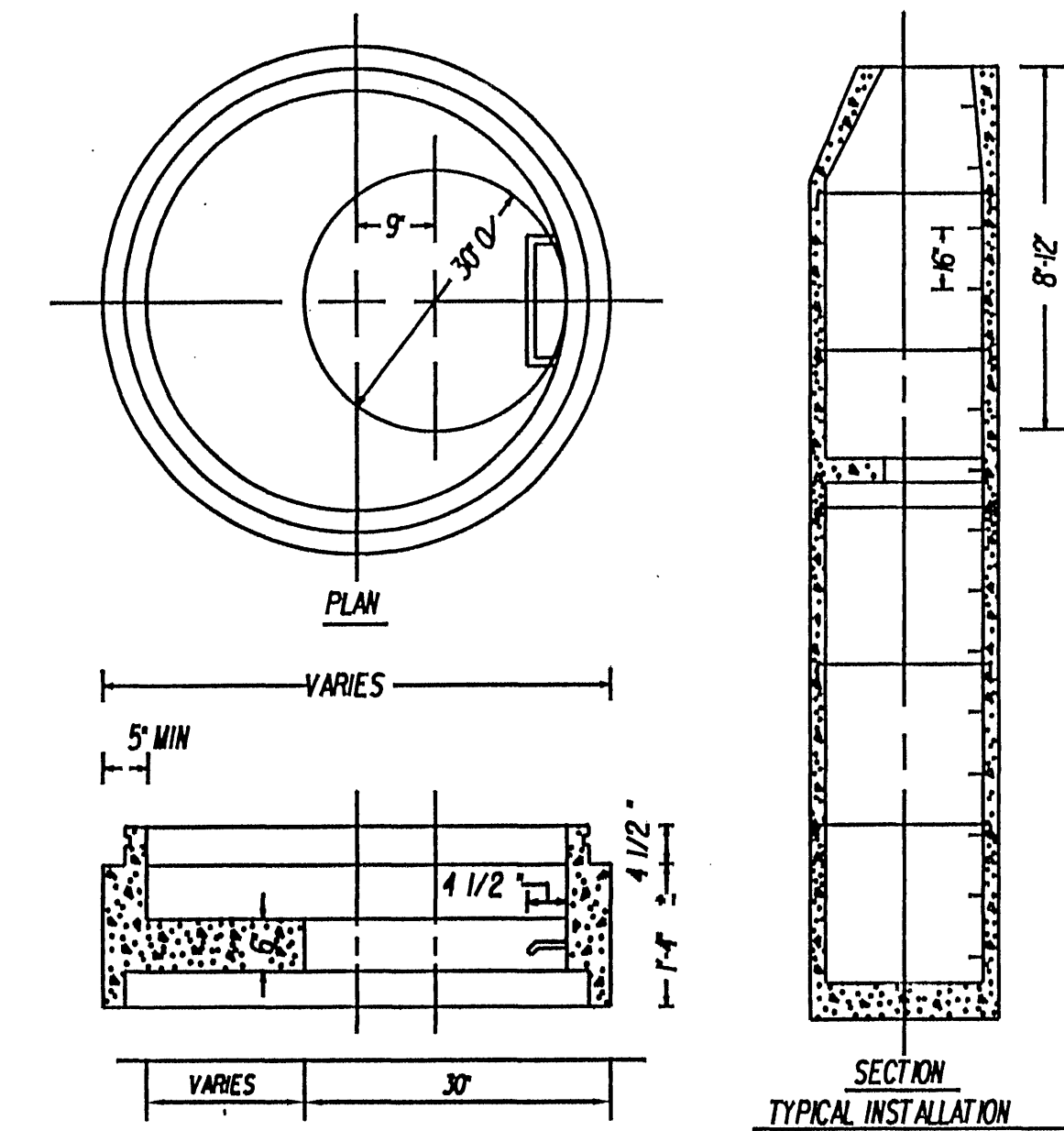


THE CONTRACTOR SHALL BE RESPONSIBLE FOR PROVIDING A LICENSED PLUMBER TO MAKE THE ACTUAL CONNECTION TO THE SEPTIC LINE AS SHOWN IN THE DETAIL. THE CONTRACTOR SHALL OBTAIN THE APPLICABLE SANITARY SEWER CONNECTION PERMITS FROM THE CITY OF ROCKHLE. THE PROPERTY OWNER IS REQUIRED TO PAY THE CONNECTION FEE. THE SEPTIC TANK SHALL BE ABANDONED BY PUMPING THE TANK, REMOVING IT'S TOP, AND FILLING THE TANK WITH APPROVED BACKFILL IN ACCORDANCE WITH SECTION 303.04 (g) OF THE VDOT ROAD AND BRIDGE SPECIFICATIONS (1994 ED). CONNECT TO EXIST. SEPTIC SYSTEM SHALL INCLUDE ALL MATERIALS FROM THE "F" FITTING TO THE CONNECTION WITH THE SEPTIC SYSTEM. THIS INCLUDES, BUT IS NOT LIMITED, TO THE FOLLOWING:

- 1-4' 45° BEND  
1-4' WYE  
2-4' SEWER CLEANOUTS  
APPROX. 25 LF. 4" SANITARY SERVICE LATERAL  
(IN ACCORDANCE WITH NOTE 22 ON SHEET 16(2))  
1- ABANDON EXIST. SEPTIC TANK  
1-4' PLUG  
1-4' FLEXIBLE COUPLING

NO SCALE

MANHOLE SAFETY SLAB

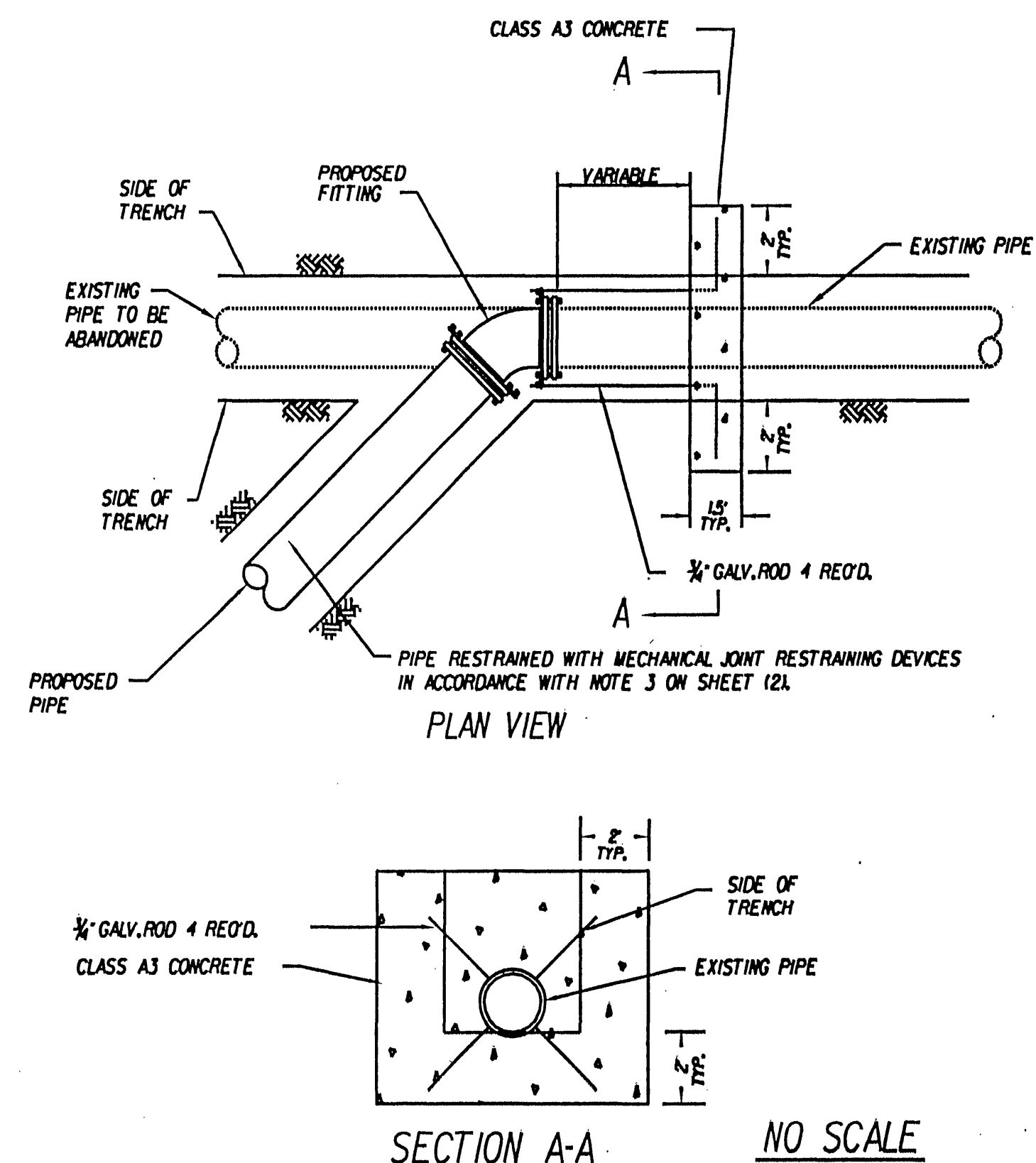


NOTES

TYPICAL INSTALLATION IS ONE SAFETY SLAB  
FOR EVERY 8 - 12 FEET OF MANHOLE DEPTH  
ALL REINFORCEMENT ACCORDING TO ASTM C478

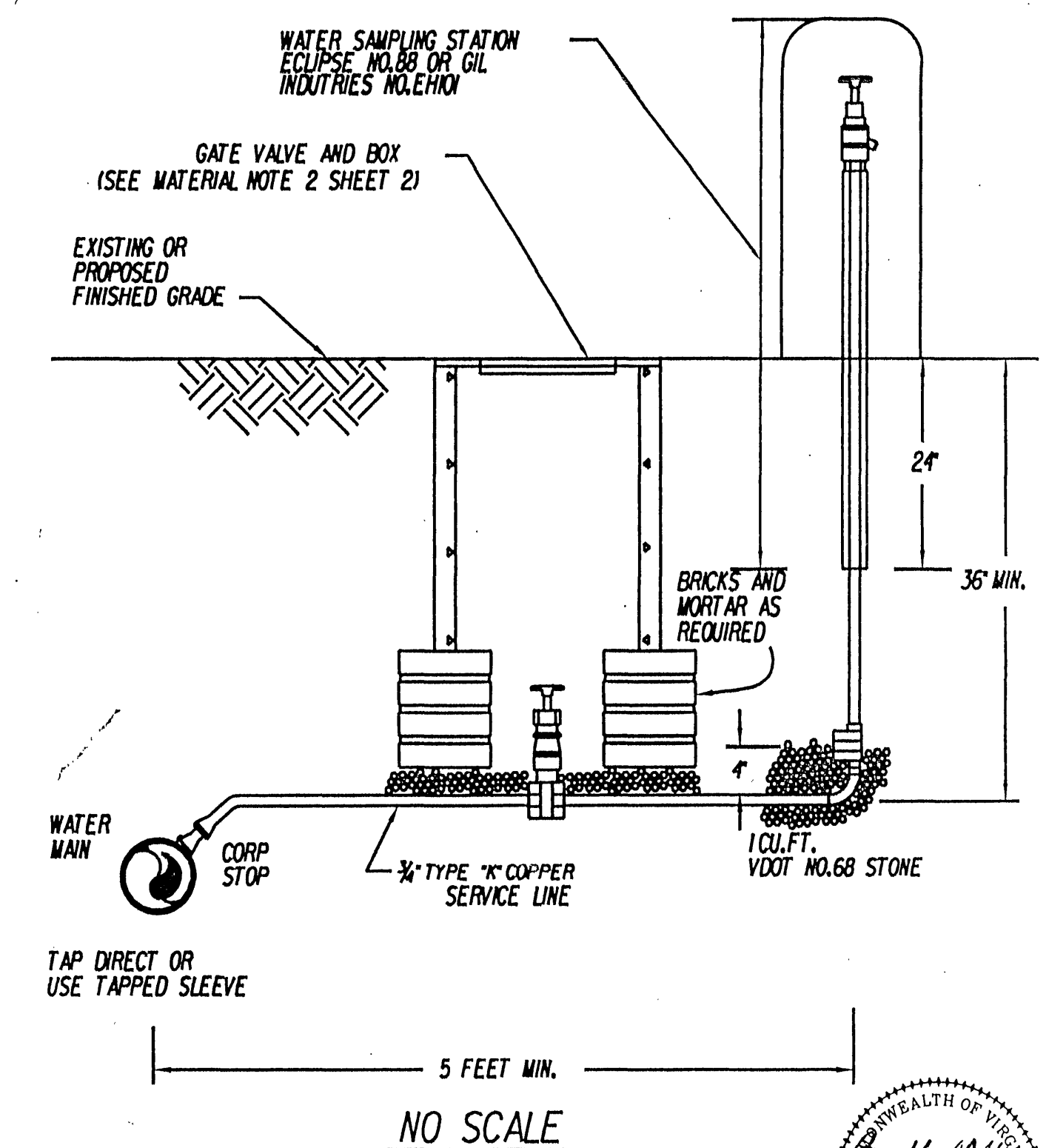
NO SCALE

CONNECT TO EXISTING WATER MAIN DETAIL  
(ALTERNATE METHOD WHEN EXISTING PIPE WILL NOT ACCEPT MECHANICAL RESTRAINING DEVICE)



NO SCALE

SAMPLE TAP DETAIL



COMMONWEALTH OF VIRGINIA  
BRADFORD J. STIPES  
No. 26425  
PROFESSIONAL ENGINEER  
05 JAN 76

SUPERVISED BY M. W. REYNOLDS (804) 786-2934  
DESIGNED BY ANDERSON & ASSOCIATES  
CADD OPERATOR ANDERSON & ASSOCIATES  
REVISED BY -----

PLAN	SURVEYED	BY	DATE
NOTE BOOK	PLATTED		
	ALIGNMENT CHECKED		
NO. _____	RIGHT OF WAY CHECKED		