

NOTES

1. ALL MANHOLE FRAMES AND COVERS SHALL BE EAST JORDAN IRON WORKS, INC. WATER TIGHT MANHOLE FRAME MODEL #10452, WATER TIGHT COVER MODEL #1040ACS, AND BOLT-DOWN MANHOLE COVER MODEL #1040ACLS, OR APPROVED EQUAL. BOLT-DOWN MODEL TO BE USED IN AREAS SUBJECT TO FLOODING OR AS DIRECTED BY THE AUTHORITY.

2. STEPS TO BE VERTICALLY ALIGNED.

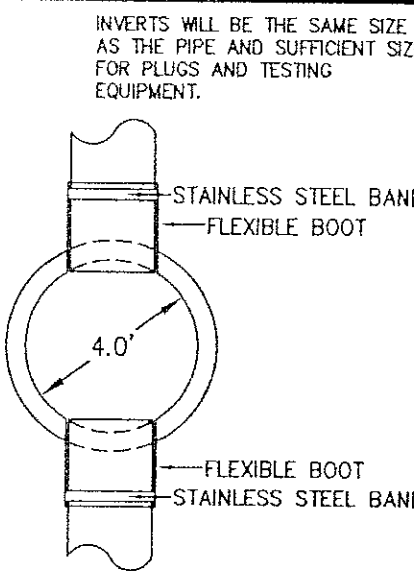
3. THE FRAME AND COVER SHALL BE PROPERLY ALIGNED WITH THE 2 FOOT OPENING OF THE MANHOLE STRUCTURE AND BOLTED IN PLACE.

4. FLAT TOP MANHOLES MAY ONLY BE SUBSTITUTED WITH THE PERMISSION OF THE UTILITY DIRECTOR. WHEN USED, THE ECCENTRIC OPENING MUST LINE UP WITH THE STEPS.

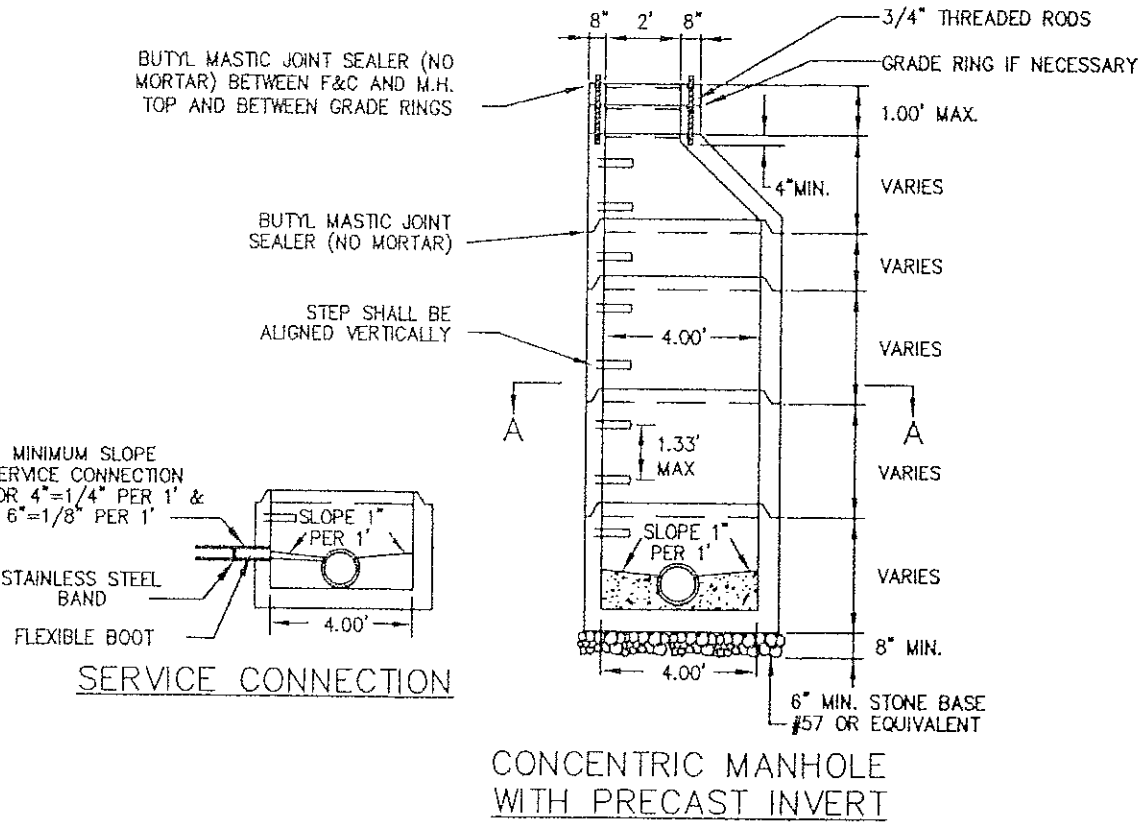
5. SAMPLING MANHOLES IN TRAFFIC AREAS SHALL BE CONSTRUCTED AS PER MANHOLE DETAILS.

6. FLEXIBLE JOINT MANHOLE CONNECTION SHALL BE AS MANUFACTURED BY PRE-SEAL GASKET CORPORATION OR EQUAL.

7. GROUT ANNUAL SPACE BETWEEN PIPE AND PRECAST MANHOLE ON INSIDE OF MANHOLE.

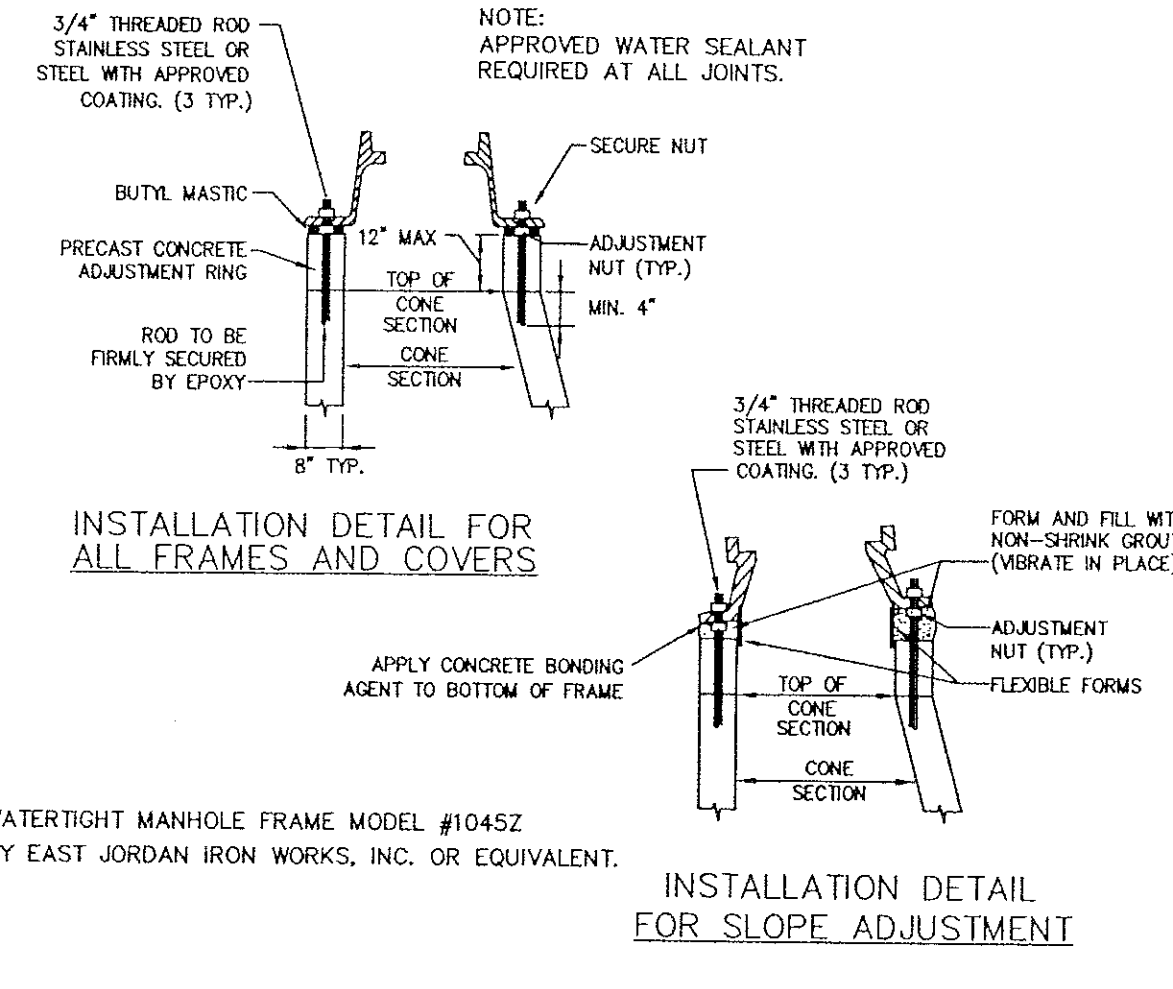
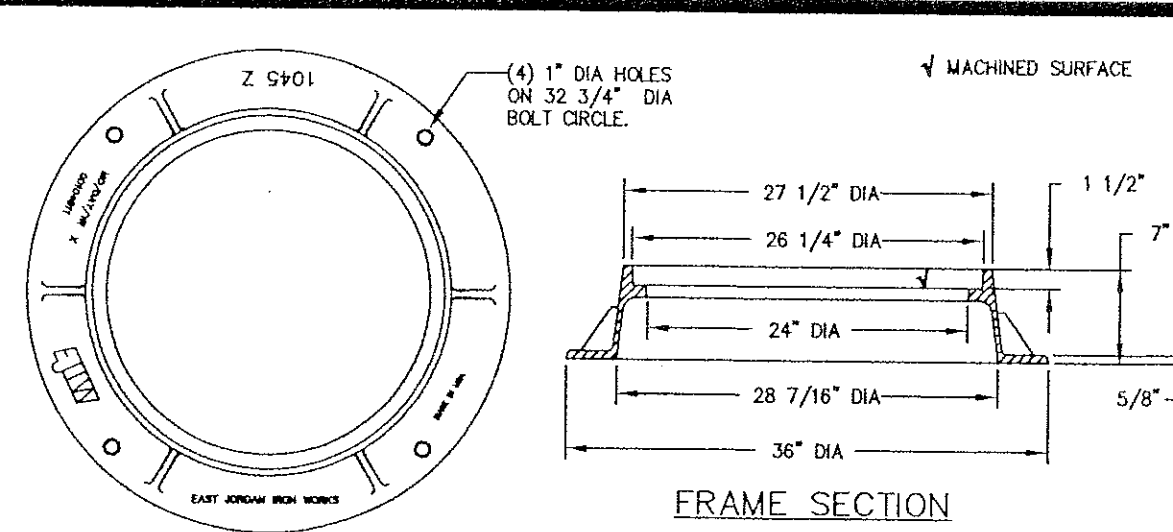


SECTION A-A



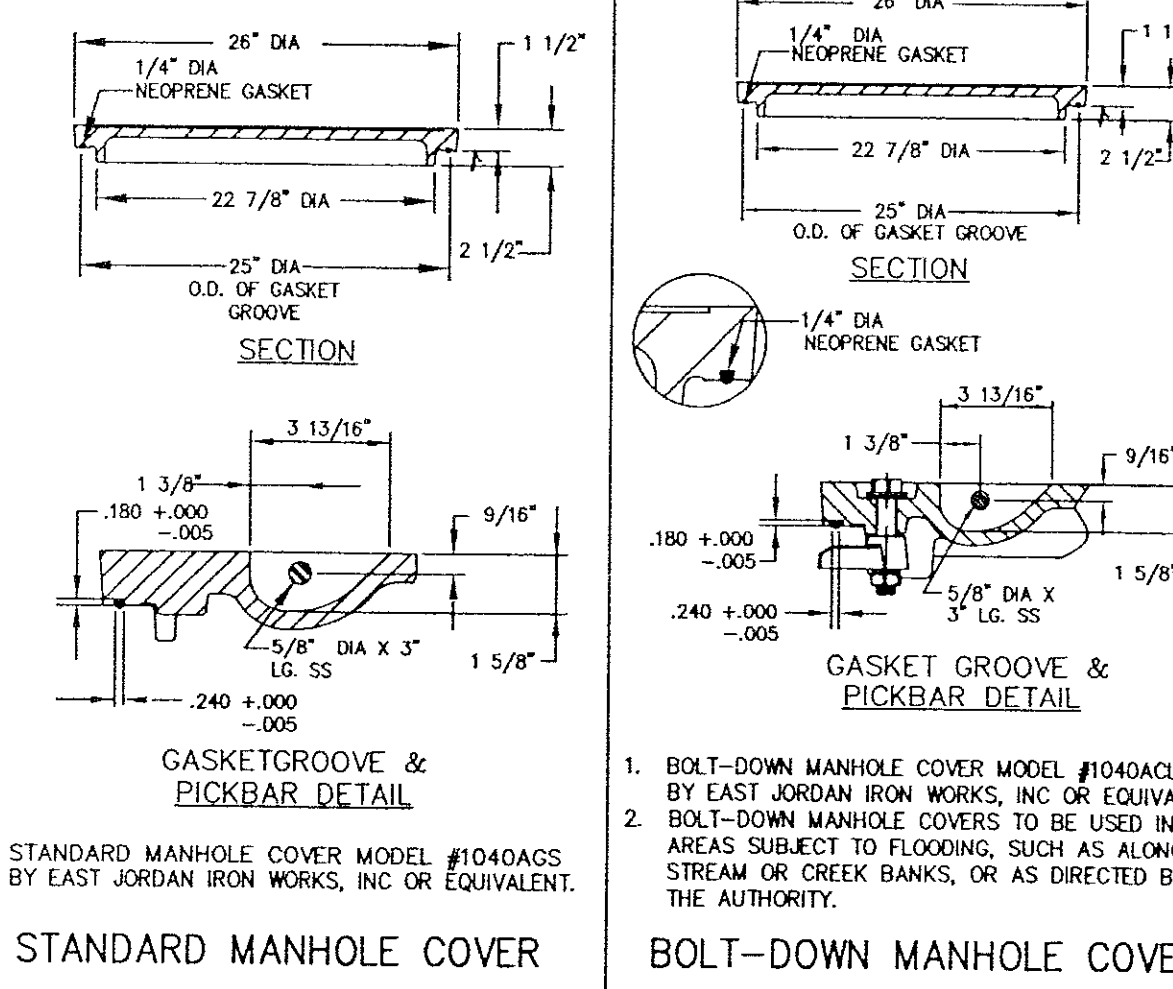
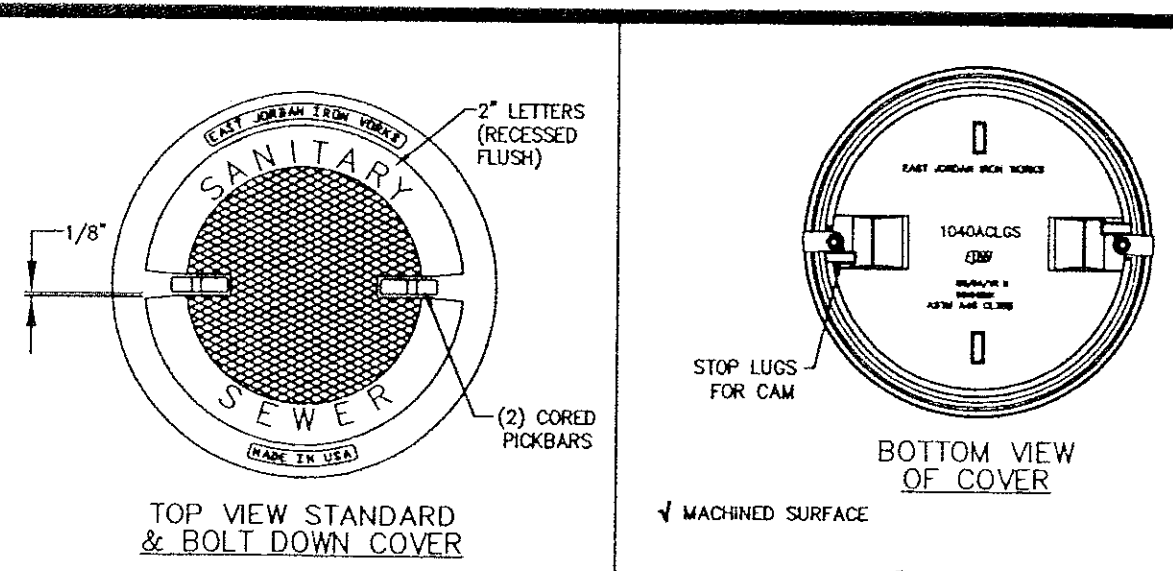
4" STANDARD MANHOLE
FOR PIPE 15" OR SMALLER

S-01



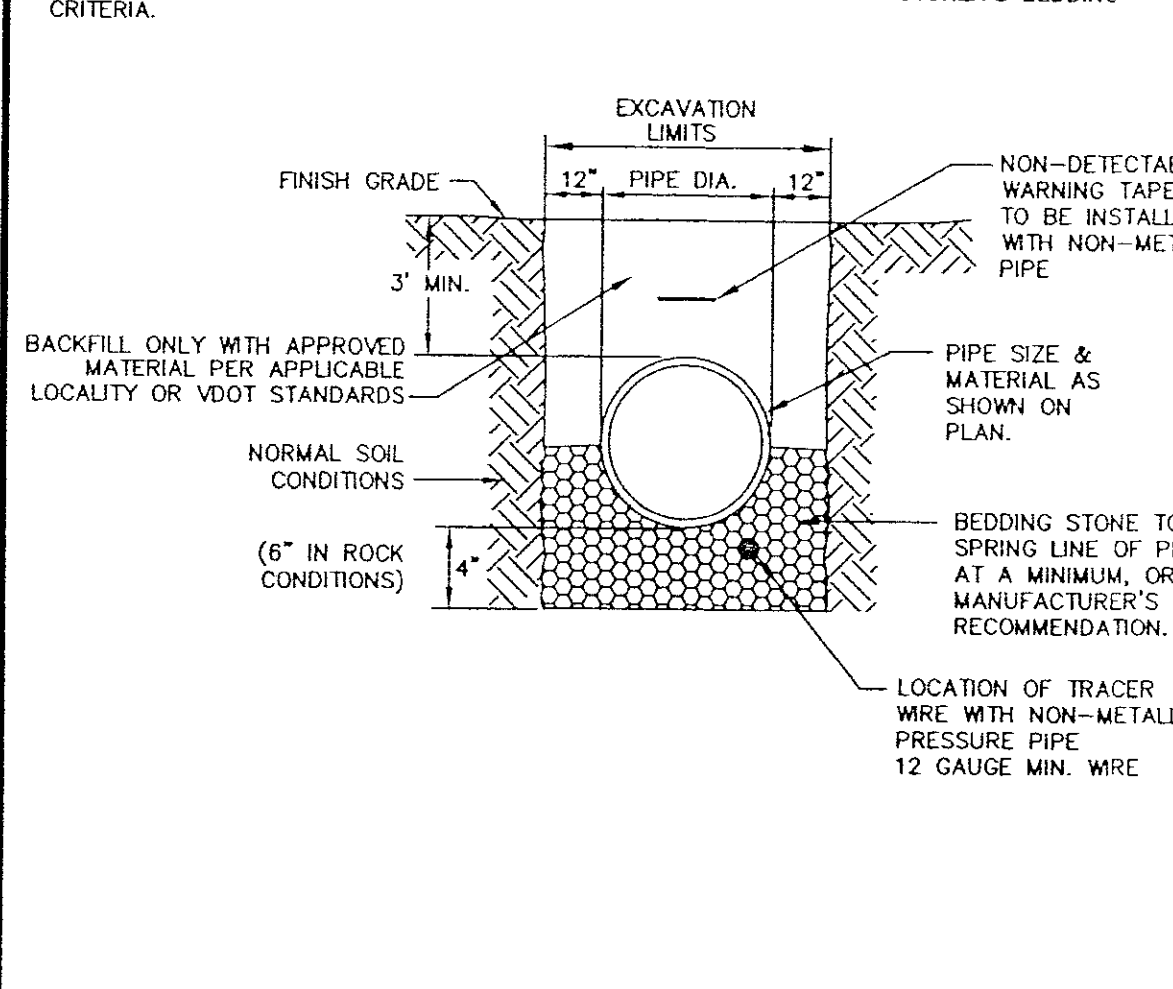
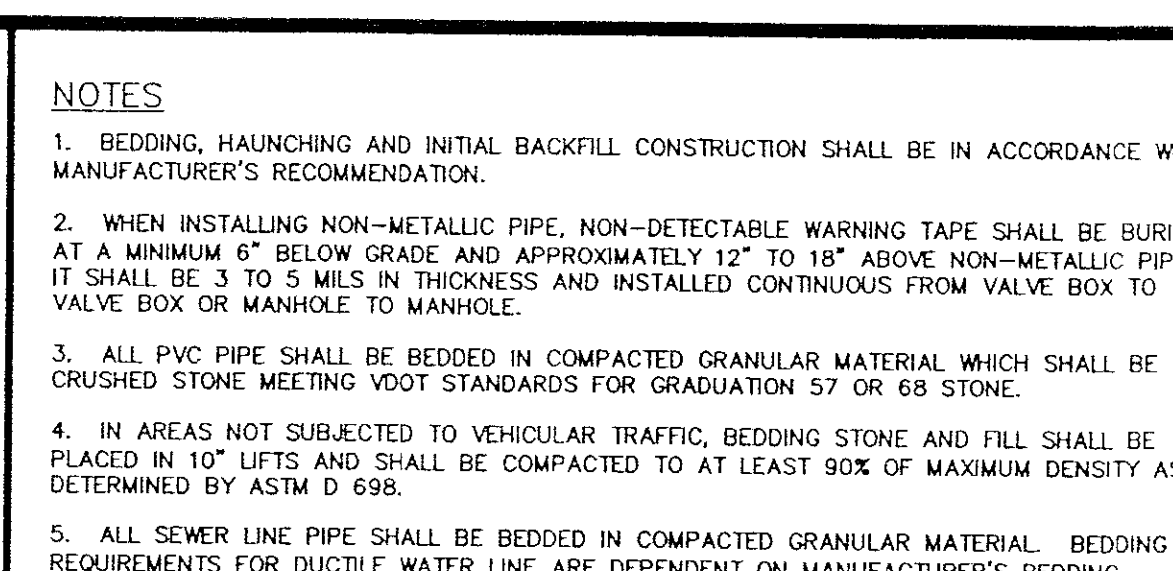
WATERTIGHT
MANHOLE FRAME

S-05



WATERTIGHT
MANHOLE COVER

S-06



BEDDING AND BACKFILL
OUTSIDE OF PAVED AREAS

G-01

NOTES

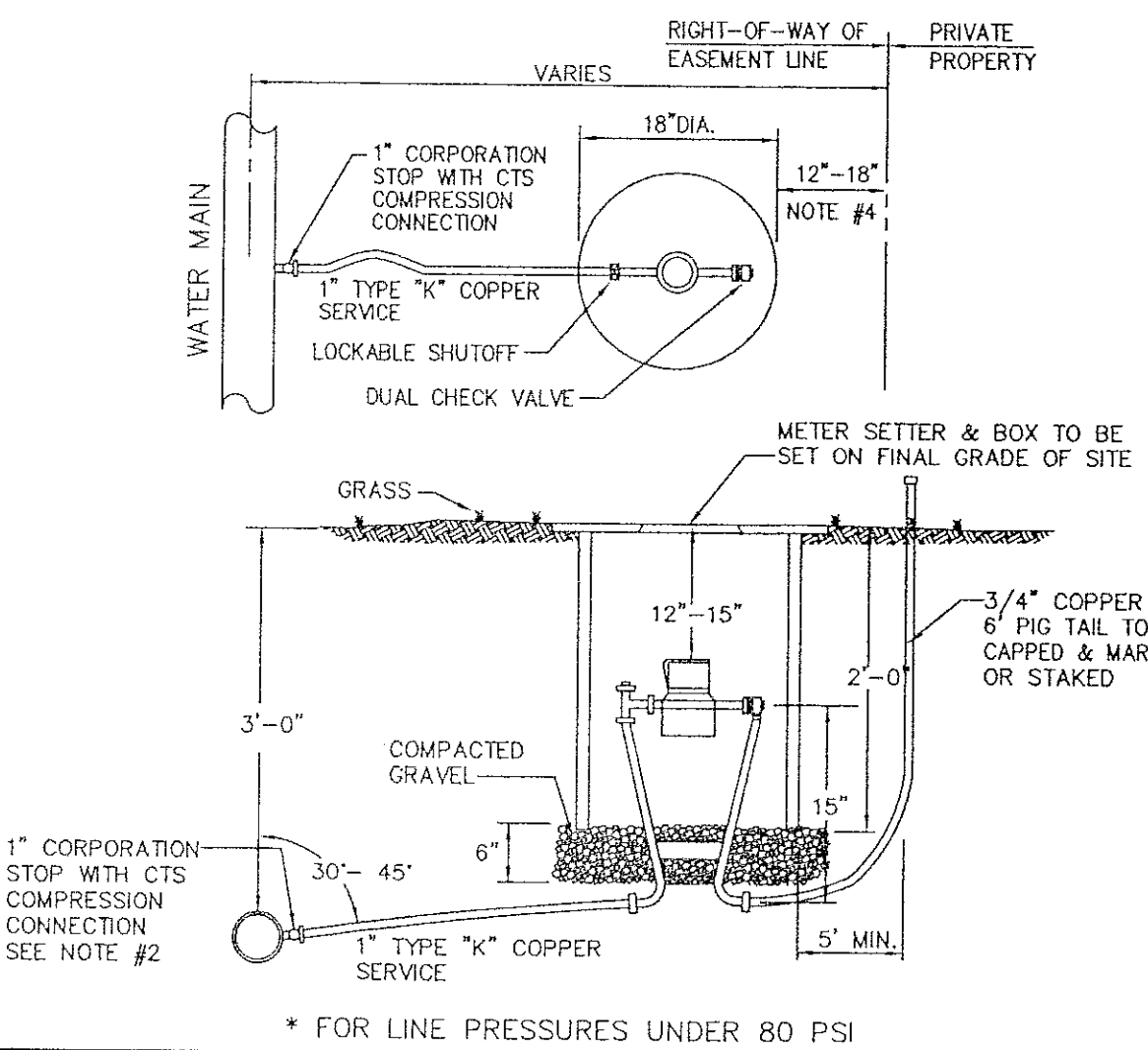
1. SETTER TO BE A.Y. McDONALD #20-215 WOLL33, FORD VBHH72-15W-1133 OR APPROVED EQUAL.

2. SADDLES MUST BE USED WITH ALL PLASTIC & CLASS 50 DUCTILE IRON PIPE. SERVICE SADDLES SHALL BE USED IN ACCORDANCE WITH SECTION 2665 OF THE WATER STANDARDS. SERVICE SADDLES FOR PLASTIC PIPE SHALL BE: POWERSEAL 3417, OR 3412AS, ROMAC 202S, OR 306, OR FORD METER F202 OR F2303. FOR DUCTILE IRON PIPE USE THE ABOVE OR POWERSEAL 3413, ROMAC 202 OR FORD METER F202.

3. METER BOX MUST BE MID-STATES PLASTICS, INC. PLASTIC BOX WITH FORD A32-T (ELECTRONIC READ LID) OR A.Y. McDONALD MODEL 74M32C-1C CAST IRON BASE & COVER OR APPROVED EQUAL.

4. WHENEVER SIDEWALK EXISTS OR IS PROPOSED, MODIFY METER LOCATION AS DIRECTED.

5. CORPORATION STOP MUST BE FORD F1000-4-6 OR APPROVED EQUAL.



TYPE 'A' SINGLE
RESIDENTIAL WATER SERVICE

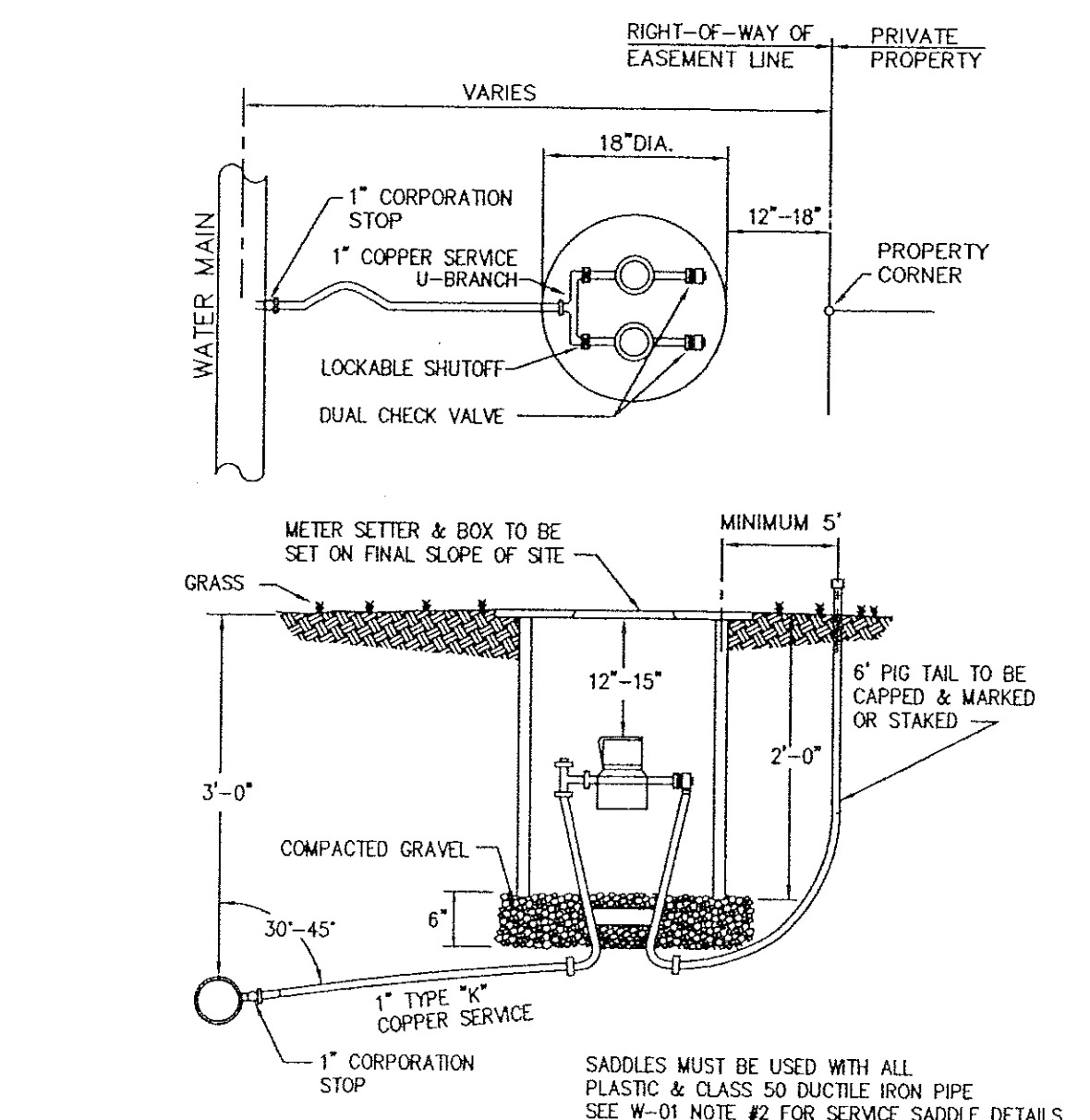
W-01

NOTES

1. SETTER TO BE A.Y. McDONALD #20-215 WOLL33, FORD VBHH72-15W-1133 OR APPROVED EQUAL.

2. METER BOX MUST BE MID-STATES PLASTICS, INC. PLASTIC BOX WITH FORD A32-T (ELECTRONIC READ LID) OR A.Y. McDONALD MODEL 74M32C-1C CAST IRON BASE & COVER OR APPROVED EQUAL.

3. CORPORATION STOP MUST BE FORD F1000-4-6 OR APPROVED EQUAL.



DOUBLE RESIDENTIAL
WATER SERVICE

W-04

NOTES

1. TRACER WIRES SHALL BE INSTALLED USING MANHOLES, VALVE BOXES OR VAULTS, WATER METERS AND FIRE HYDRANTS AS ACCESS POINTS.

2. TRACER WIRE SHALL BE A 12 GAUGE SOLID COPPER WIRE WITH POLYETHYLENE INSULATION OF 30 MIL THICKNESS.

3. SPLICES SHALL BE MADE USING A 3M DIRECT BURY SPUCE KIT (DBY) OR EQUIVALENT.

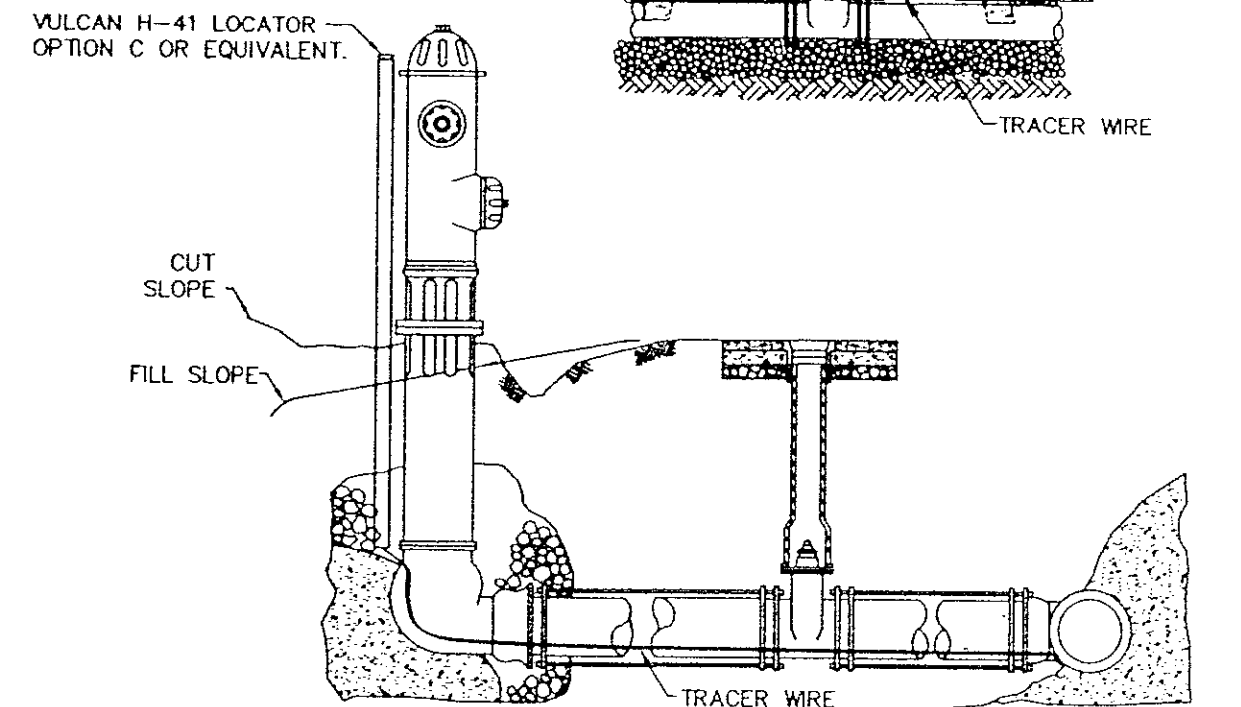
4. THE CONTINUOUS TRACER WIRE SHALL COVER A MAXIMUM LENGTH OF 500'.

5. ASBULTS SHALL SHOW TRACER WIRE(S) LOCATION AND ACCESS POINT(S).

6. THE TRACER WIRE SHALL BE PLACED ALONG THE LOWER QUADRANT OF THE PIPE. THE WIRE SHALL NOT TOUCH THE PIPE, BUT SHALL BE A MAXIMUM OF 6\"/>

7. WHERE LINES ARE GREATER THAN SIX(6) FEET IN DEPTH, WIRE SHALL BE BROUGHT TO THE SURFACE EVERY ONE-HUNDRED (100) FEET AND PLACED IN A WATER METER BOX OR APPROVED JUNCTION BOX.

8. THE TRACER WILL BE TESTED BY THE AUTHORITY AS PART OF THE PROJECT'S FINAL ACCEPTANCE.



TRACER WIRE FOR NON-
METALLIC PRESSURE PIPE

G-05

WESTERN VIRGINIA
WATER AUTHORITY

REVISIONS			
No.	Date	Remarks	By

FOXFIELD AT RUSSLER FARMS
SECTION 3

Designed: W.V.W.A.
Checked: W.V.W.A.
Revised: May 11, 2005
Scale: No Scale
W.O. # 01-0090

SANITARY SEWER
& WATER DETAILS

SHEET
7
OF 7