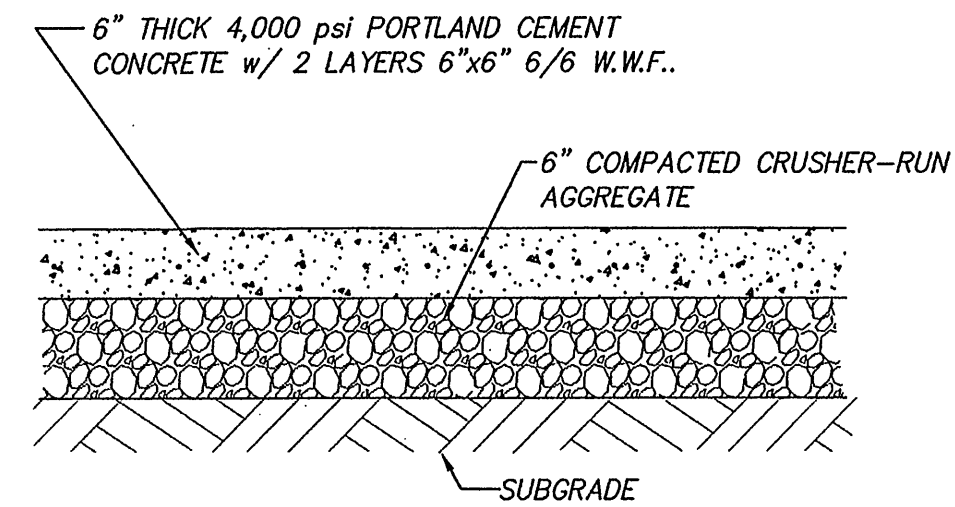


HANDICAP PARKING SIGN DETAIL

NO SCALE

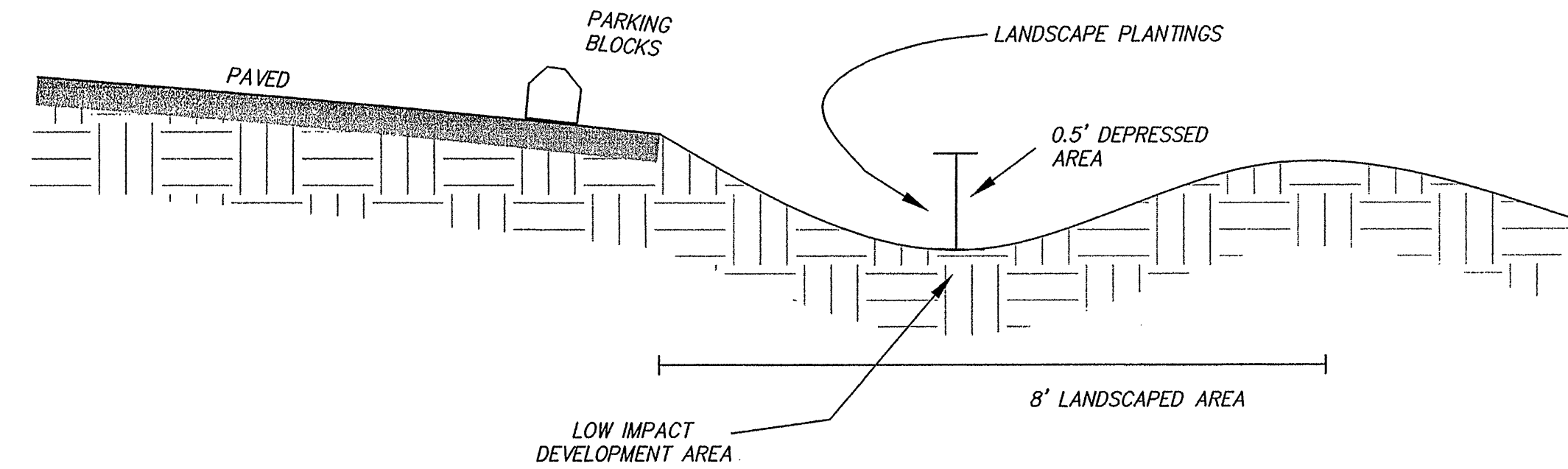
1  
06



MINIMUM PORTLAND CEMENT CONCRETE PAVEMENT

NO SCALE

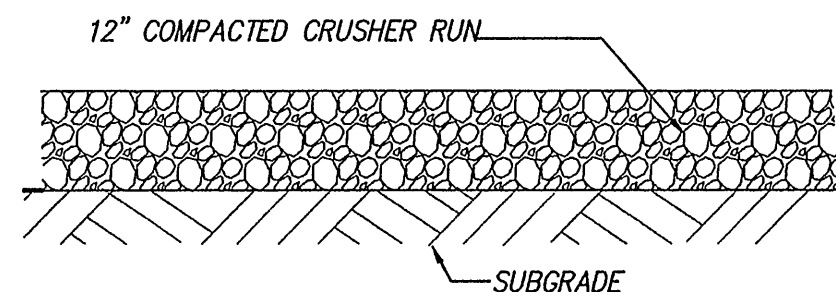
5  
06



PARKING PERIMETER LANDSCAPE DETAIL

NO SCALE

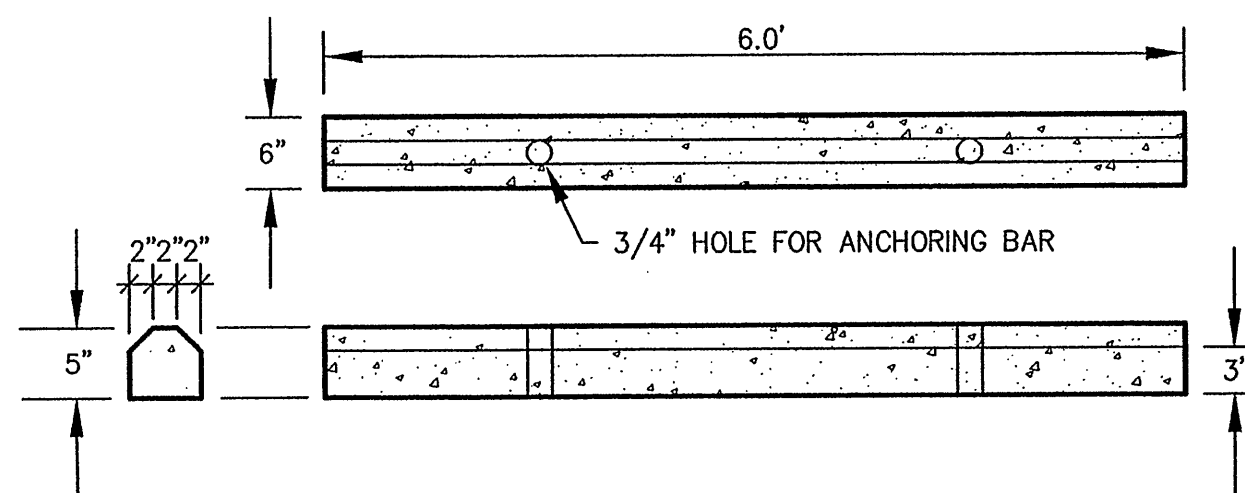
6  
06



MINIMUM GRAVEL DETAIL

NO SCALE

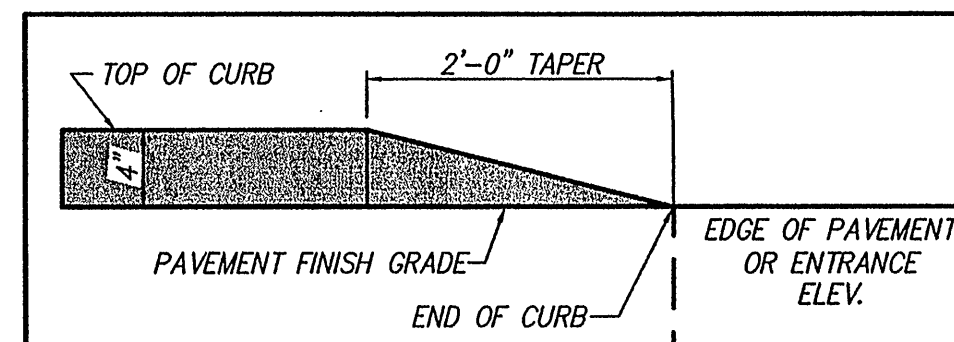
4  
06



WHEEL STOP/ PARKING BLOCK

NO SCALE

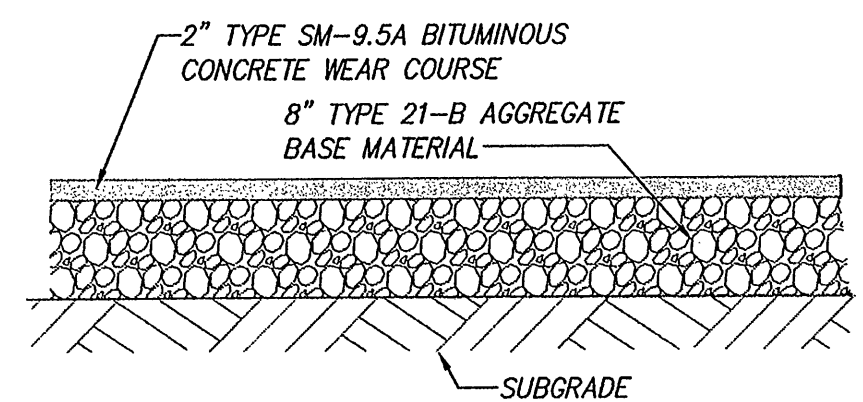
2  
06



CURB TAPER DETAIL

NO SCALE

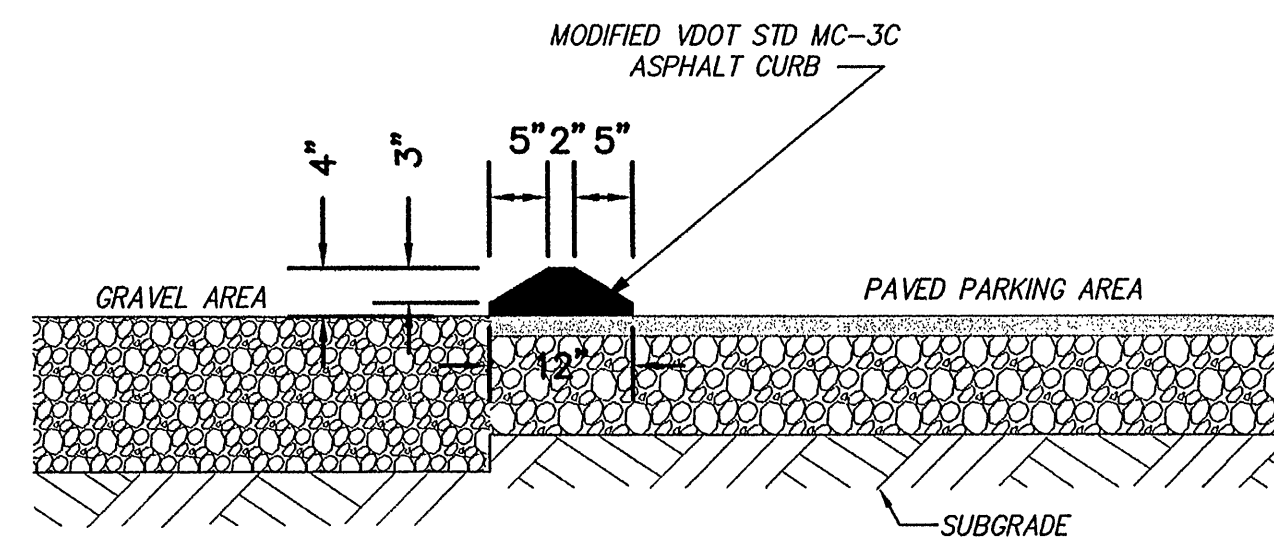
11  
06



LIGHTWEIGHT PAVEMENT DETAIL

NO SCALE

3  
06

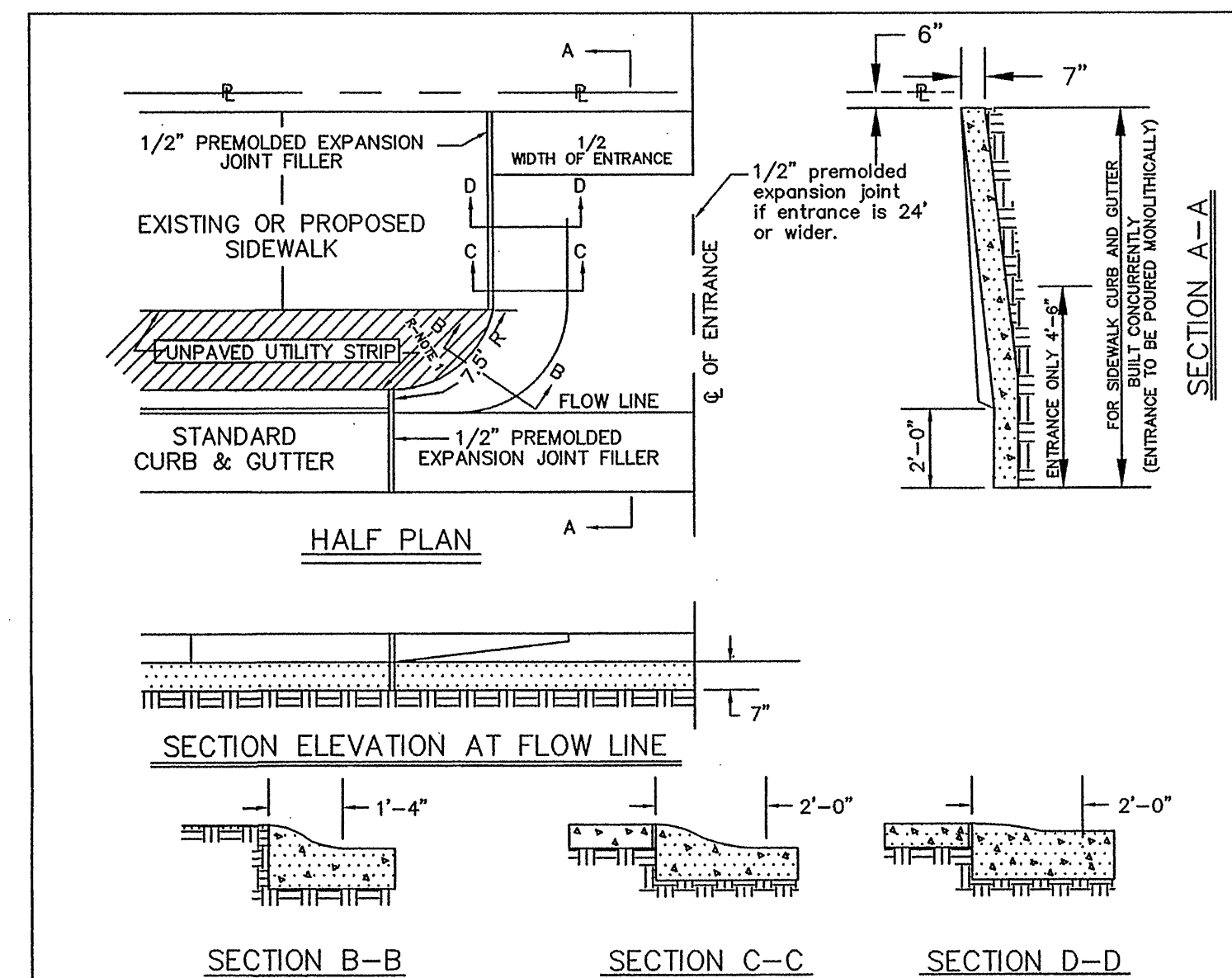
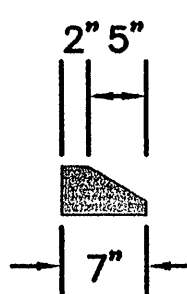


ASPHALT MOUNTABLE CURB

NO SCALE

10  
06

WHEN ASPHALT CURB IS ADJACENT TO GRASSED AREAS, THE CURB SHALL BE 7" WIDE AND THE GRASSED SIDE SHALL BE A VERTICAL FACE AS SHOWN BELOW.



- GENERAL NOTES:
- Standard commercial "Entrance" shall have a minimum curb radius (R) of 7 1/2 feet.
  - Minimum Entrance width to be 12 feet.
  - Where curb & gutter already exists both curb & gutter shall be removed. If proposed entrance falls within five (5) feet of an existing joint removal & reconstruction shall be to that joint. Any concrete removed at other than an existing joint shall be cut with a mechanical saw specifically manufactured for that purpose; this also shall apply to street pavement.
  - Where sidewalk exists or is to be constructed across driveways the thickness thereof must correspond with the thickness of the entrance.
  - Whenever "Entrance" exceeds twenty-four (24) feet in width a 1/2" premolDED expansion joint filler shall be installed through the center perpendicular to flow line.
  - Finish "Entrances" shall have a "course broom finish" running parallel to flow line.
  - Curing shall be accomplished by the use of a liquid membrane seal containing white pigment applied at the rate of one (1) gallon per 150 square feet.
  - All "Entrance Ways" shall be constructed according to City of Roanoke specifications and to line and grades approved by the City Engineering Department.
  - Entrances exceeding 30 feet in width shall be approved by the City Manager.

OFFICE OF THE CITY ENGINEER — ROANOKE, VIRGINIA

APPROVED  
CITY ENGINEER  
DATE:

STANDARD  
CITY OF ROANOKE  
COMMERCIAL ENTRANCE

SHEET  
5 OF 7

Standard Notes:

- Work shall not commence in public right-of-way before approval by an inspector and a permit is obtained.
- Notify Construction Inspectors office at 853-2856 — 48 hours before work begins.
- Do not pour any concrete before forms have been inspected and approved.

7  
06

These documents are the property of Parker Design Group (PDG) and may not be reproduced or used without the express permission of PDG. Any reuse of these documents without authorization of PDG will be at the sole risk of the individual or entity utilizing said documents.



**Comprehensive Site Plan For**  
**Lewis S. & Susan M. Pauley**  
**Lot 5A, Block 10, Hyde Park**  
Tax Map No. 2212814  
City of Roanoke, VA

REVISIONS:  
CITY OF ROANOKE REVIEW COMMENTS  
CITY OF ROANOKE COMMENTS  
PJB 7/12/06  
PJB 8/25/06

DESIGNED BY: SLR  
DRAWN BY: SLR  
CHECKED BY: PJB  
SCALE: As Shown  
DATE: June 14, 2006

SHEET TITLE:

General Details

**C06**  
06 OF 07  
PROJECT NUMBER:  
06-0108-01