

GENERAL DEMOLITION NOTES

UNLESS OTHERWISE STATED HEREON, ALL EXISTING PHYSICAL IMPROVEMENTS LOCATED WITHIN THE LIMITS OF "DISTURBED AREA" OR "AREA OF WORK" ARE TO BE REMOVED FROM THE SITE IN THEIR ENTIRETY. IN THE EVENT THAT THERE ARE QUESTIONS REGARDING THE DISPOSITION OF CERTAIN IMPROVEMENTS, THE CONTRACTOR SHALL VERIFY WITH THE ENGINEER PRIOR TO ENGAGING IN ANY DEMOLITION WORK RELATIVE TO THE ITEMS IN QUESTION.

DEMOLITION SHALL INCLUDE, UNLESS OTHERWISE NOTED ON DRAWINGS, REMOVAL OF EXISTING OBJECTS OR IMPROVEMENTS, WHETHER INDICATED ON THE DRAWINGS OR NOT, THAT WOULD IN THE OPINION OF THE OWNER, PREVENT OR INTERFERE WITH THE PROGRESS OR COMPLETION OF THE PROPOSED WORK.

PERMITS, FEES AND LICENSES SHALL BE SECURED AND PAID FOR BY THE CONTRACTOR, INCLUDING DISPOSAL CHARGES AS REQUIRED.

WORK SHALL COMPLY WITH THE REQUIREMENTS OF THE GOVERNING AUTHORITIES IN DEMOLITION OF EXISTING PAVEMENT, CURBS AND GUTTERS, DRAINAGE STRUCTURES AND UTILITIES AS MAY BE REQUIRED.

CONTRACTOR SHALL SAN-CUT ALL JOINTS WHERE EXISTING CURBING, PAVEMENT AND SIDEWALK IS TO BE DEMOLISHED AND NEW CONSTRUCTION JOINS THE EXISTING.

ALL EXISTING CURBING, CONCRETE SIDEWALK, ENTRANCES, BUILDING FOUNDATIONS AND TREES AND BRUSH THAT ARE DEMOLISHED SHALL BE REMOVED FROM THE SITE AND DISPOSED OF BY THE CONTRACTOR. DEMOLITION DEBRIS, ETC. SHALL NOT BE USED AS FILL MATERIAL ON THE SITE.

REFER TO PROJECT MANUAL FOR DIRECTION GOVERNING ABANDONMENT OR REMOVAL OF EXISTING UTILITIES.

CONTRACTOR SHALL PROVIDE THE FOLLOWING PROTECTIONS AT THE JOB SITE:

- MAKE ARRANGEMENTS, BEFORE INITIATING DEMOLITION, FOR RELOCATING, DISCONNECTION, REROUTING, ABANDONING, OR SIMILAR ACTION AS MAY BE REQUIRED RELATIVE TO UTILITIES AND OTHER UNDERGROUND PIPING, TO PERMIT WORK TO PROCEED WITHOUT DELAY.
- ARRANGEMENTS SHALL BE MADE IN ACCORDANCE WITH REGULATIONS OF AUTHORITIES OF UTILITIES MENTIONED, SUCH AS OVERHEAD / UNDERGROUND POWER AND TELECOMMUNICATION LINES AND EQUIPMENT, GAS PIPING, STORM SEWERS, SANITARY SEWERS, OR WATER PIPING.
- CONTRACTOR SHALL NOT USE WATER WHEN IT MAY CREATE HAZARDOUS OR OBJECTIONABLE CONDITIONS SUCH AS ICE, FLOODING AND/OR POLLUTION.
- ENSURE SAFE PASSAGE OF PERSONS AROUND ALL AREAS OF DEMOLITION.
- CONDUCT OPERATIONS TO PREVENT DAMAGE TO ADJACENT BUILDINGS, STRUCTURES, OTHER FACILITIES, OR INJURY TO PERSONS.
- PROMPTLY REPAIR DAMAGES CAUSED TO ADJACENT FACILITIES BY DEMOLITION OPERATIONS AT NO COST TO THE OWNER.
- MAINTAIN EXISTING UTILITIES INDICATED TO REMAIN, KEEP IN SERVICE, AND PROTECT AGAINST DAMAGE DURING DEMOLITION OPERATIONS.
- PREVENT INTERRUPTION OF EXISTING UTILITIES SERVING OCCUPIED OR USED FACILITIES, EXCEPT WHEN AUTHORIZED IN WRITING BY AUTHORITIES HAVING JURISDICTION.
- PROVIDE TEMPORARY SERVICES DURING INTERRUPTIONS TO EXISTING UTILITIES AS ACCEPTABLE TO OWNER AND GOVERNING AUTHORITIES.
- PROVIDE TRAFFIC CONTROL MEASURES AS DEEMED NECESSARY FOR CONTROL OF VEHICULAR ROUTES DURING TIMES OF DEMOLITION OR RECONSTRUCTION WITHIN OR ADJACENT TO PUBLIC STREETS OR OTHER OFF-SITE VEHICULAR ROUTES. CONTROLS MAY INCLUDE, BUT

- NOT BE LIMITED TO, CONES, BARRIERS, BARRICADES, SIGNAGE (STATIC AND/OR MARQUEE) AND FLAGMEN.
- USE WATER SPRINKLING AND OTHER SUITABLE METHODS TO LIMIT DUST AND DIRT RISING AND SCATTERING IN AIR TO LOWEST PRACTICAL LEVEL, COMPLY WITH GOVERNING REGULATIONS PERTAINING TO ENVIRONMENTAL PROTECTION.
- CLEAN ADJACENT STRUCTURES AND IMPROVEMENTS OF DUST, DIRT, AND DEBRIS CAUSED BY DEMOLITION OPERATIONS, RETURN ADJACENT AREAS TO CONDITIONS EXISTING PRIOR TO THE START OF WORK, OR BETTER.

REVISED

SUMMARY OF DISTURBED AREAS

DISTURBED AREA #1 = 4,915.51 SQ. FT. (BLDG. ADDN, WATER RECONSTR., CURB & GUTTER)
DISTURBED AREA #2 = 104.51 SQ. FT. (CURB & GUTTER)
TOTAL DISTURBED AREA = 5,020.02 SQ. FT. = 0.228 AC.

FIRE FLOW NOTES

ON MARCH 15, 2022, THE WVA FLOW TESTED THREE PUBLIC HYDRANTS IN THE SURROUNDING AREA, THE LOCATIONS AND RESULTS OF WHICH ARE:

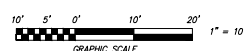
WVA HYDRANT 11791, LOCATED AT THE SOUTHWEST CORNER OF 610 CONNECTICUT AVENUE.
STATIC PRESSURE = 69 psi
FLOW = 1250 gpm WITH 60 psi RESIDUAL PRESSURE
CALCULATED FLOW AT 20 psi RESIDUAL = 2558 gpm

WVA HYDRANT 11796, LOCATED NEAR THE INTERSECTION OF PLANTATION ROAD AND CONNECTICUT AVENUE.
STATIC PRESSURE = 69 psi
FLOW = 1200 gpm WITH 60 psi RESIDUAL PRESSURE
CALCULATED FLOW AT 20 psi RESIDUAL = 2545 gpm

WVA HYDRANT 11788, LOCATED 1220 FEET SOUTH OF THE INTERSECTION OF 6TH STREET AND CONNECTICUT AVENUE.
STATIC PRESSURE = 74 psi
FLOW = 1287 gpm WITH 60 psi RESIDUAL PRESSURE
CALCULATED FLOW AT 20 psi RESIDUAL = 2733 gpm

ADDED

REVISED MARCH 30, 2022 PER FIRST CITY REVIEW - C.L. White



Designed: C.L. White
Drawn: C.L. White
Checked: C.L. White
Date: January 15, 2022
Scale: 1" = 10'
Tax Parcel: 3040713
Field Book: N/A
E.O. No.: 21-0100

EXISTING CONDITIONS & SITE DEMOLITION PLAN FOR
NEW BUILDING ADDITION
SHERWIN-WILLIAMS PAINT STORE
LIONBERGER CONSTRUCTION CO.
SITUATE 610 CONNECTICUT AVENUE, NE
CITY OF ROANOKE, VIRGINIA

CWA
CALDWELL WHITE ASSOCIATES
ENGINEERS / SURVEYORS / PLANNERS
1000 HARRISON AVENUE
P.O. BOX 8840
ROANOKE, VIRGINIA 24002-8840
(540) 966-9400
FAX: (540) 966-1705