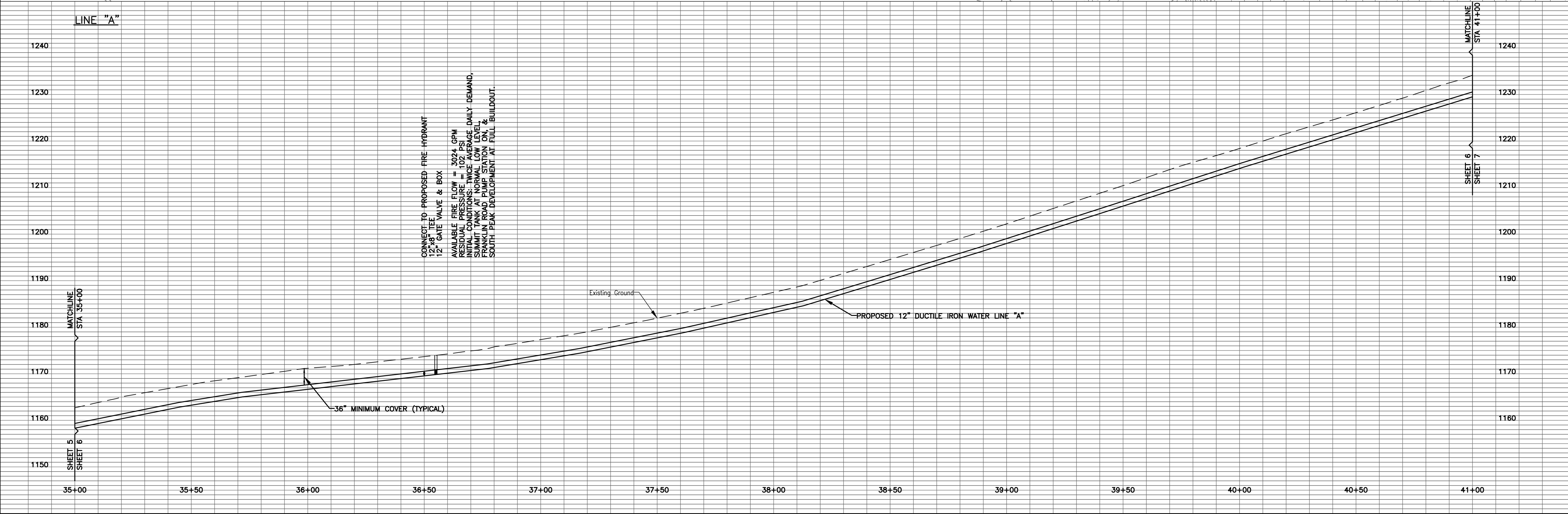
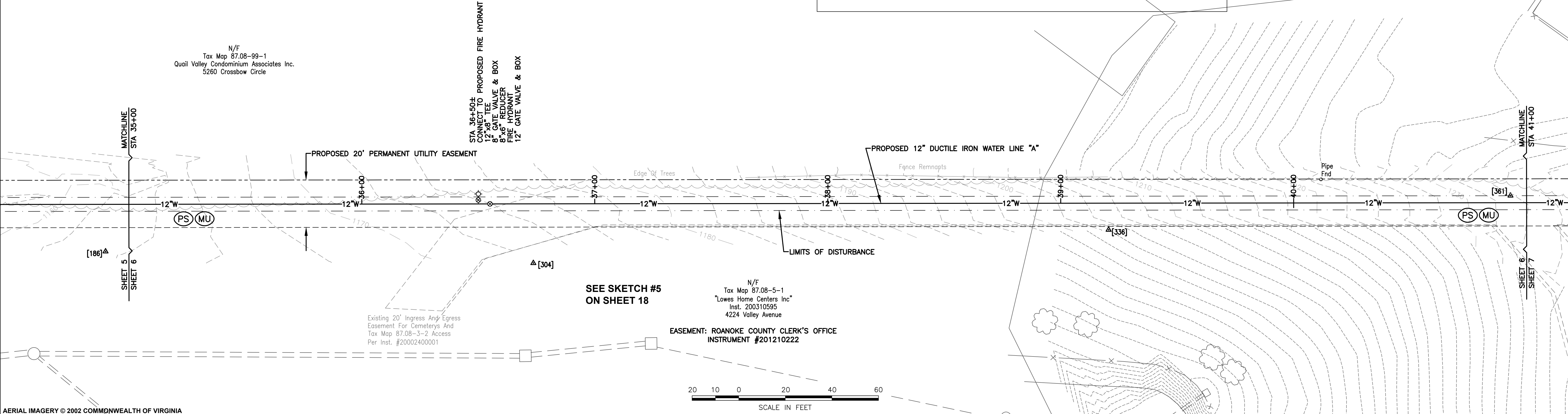


NOTES:  
1. SEE SHEET 11 FOR TYPICAL DETAILS OF EROSION & SEDIMENT CONTROL MEASURES NECESSARY TO CONTROL RUNOFF FROM TEMPORARY STOCKPILE DURING WATERLINE INSTALLATION.

DISCLAIMER:  
ALTHOUGH THIS DATA HAS BEEN TESTED BY ANDERSON & ASSOCIATES, NO WARRANTY EXPRESSED OR IMPLIED IS MADE BY ANDERSON & ASSOCIATES AS TO ITS ACCURACY, NOR SHALL THE FACT OF DISTRIBUTION CONSTITUTE ANY SUCH WARRANTY, AND NO RESPONSIBILITY IS ASSUMED BY ANDERSON & ASSOCIATES IN CONNECTION THEREWITH



Dunford, Carmen / 12/16/2013 11:03 AM / \\ap\projects\projects\26\26787\_engineering\design\plans\plan\_set\26787\_south\_peak\_waterline\_sheets\_record\_drawings.dwg