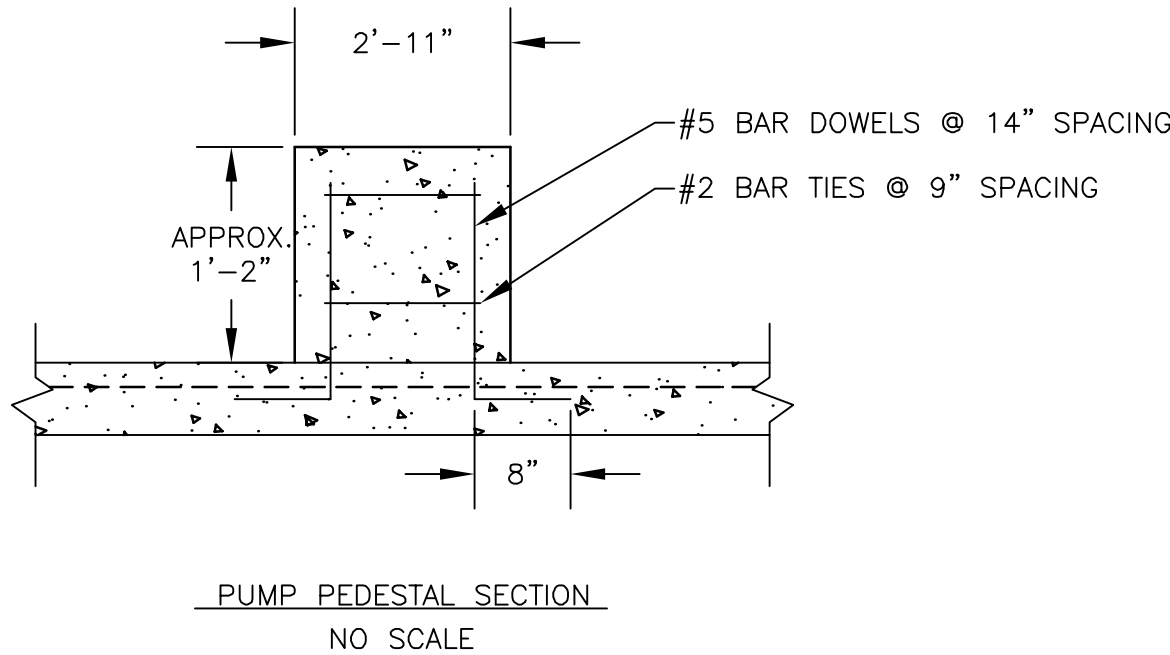
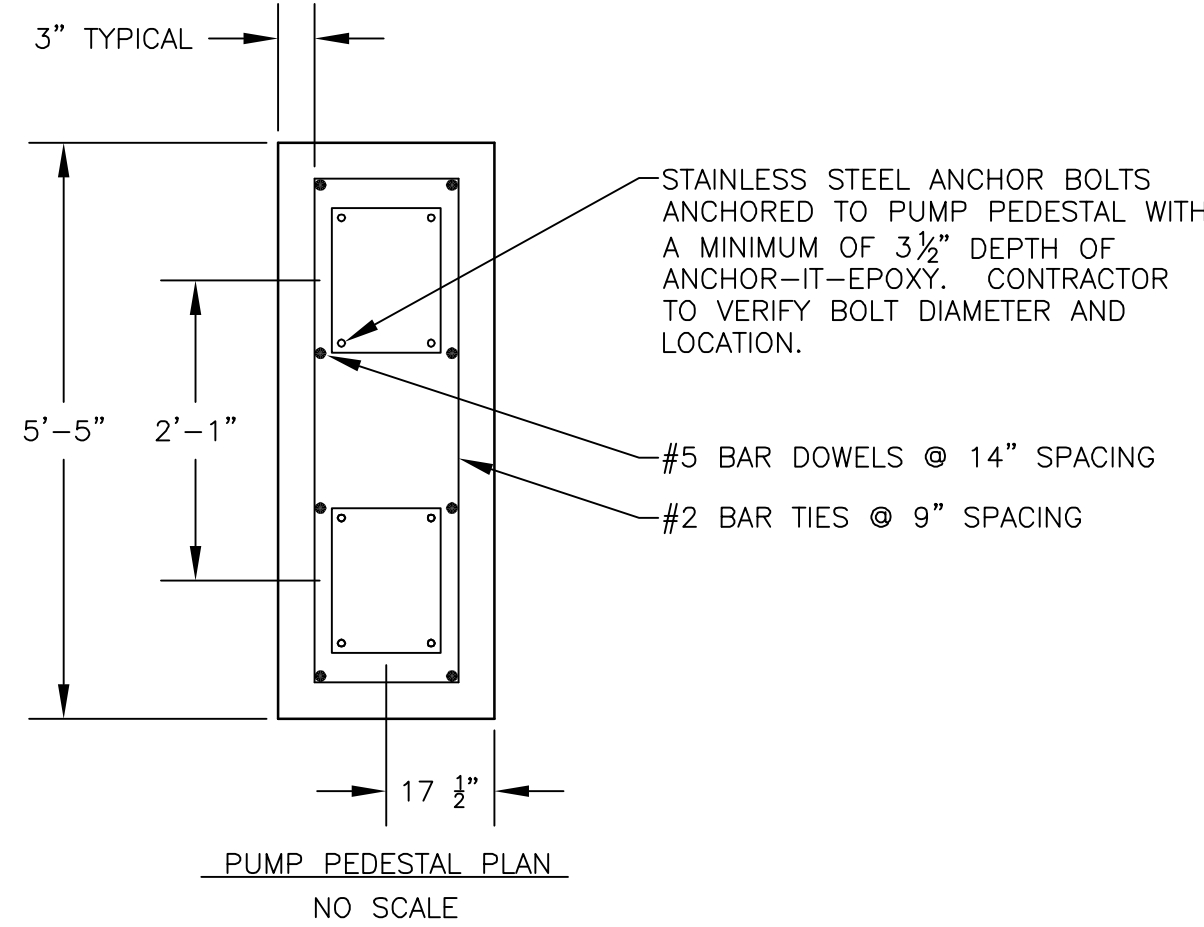
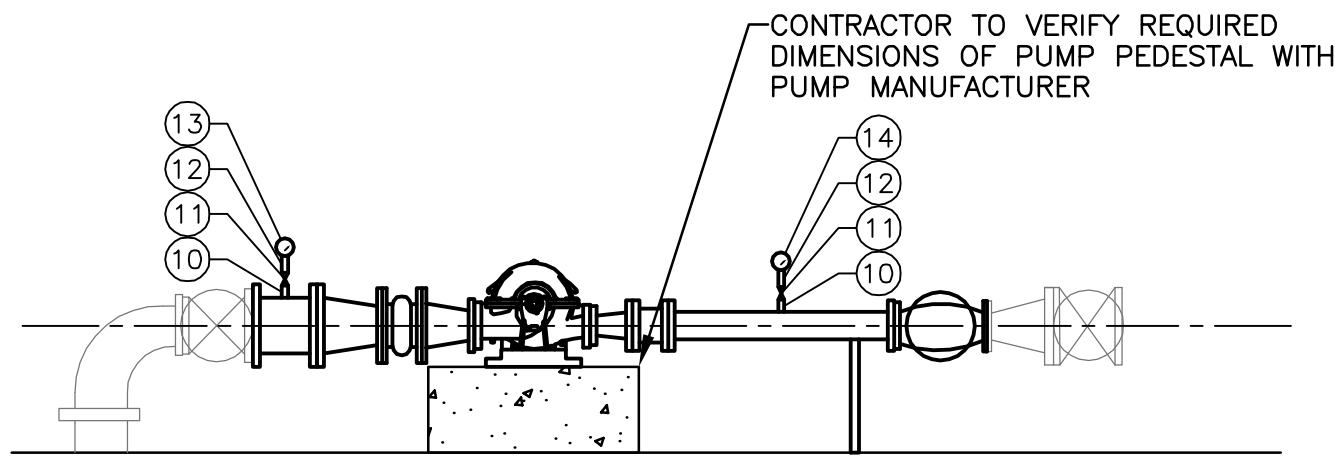
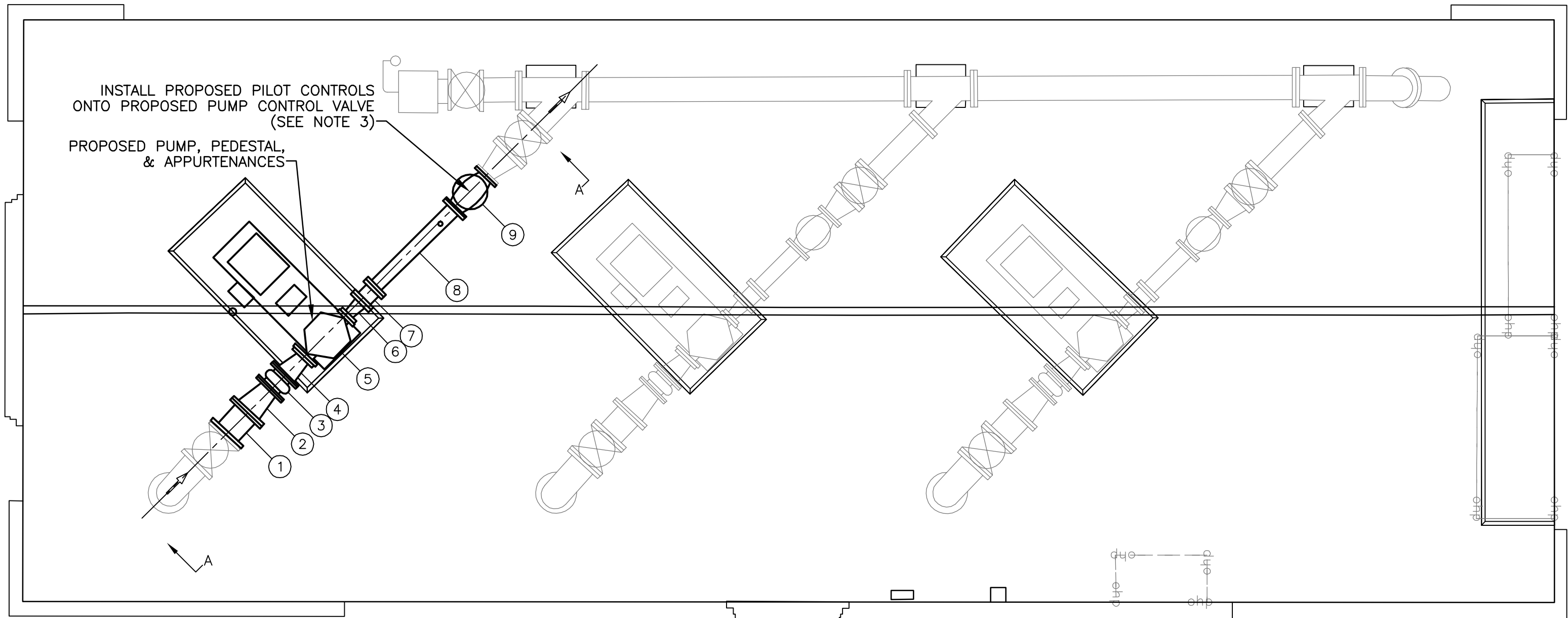


IT. #	DESCRIPTION
1	8" DUCTILE IRON SPOOL, FLANGED
2	8" x 6" REDUCER, FLANGED
3	6" FLEXIBLE COUPLING, FLANGED
4	6" x 3" REDUCER, FLANGED
5	FAIRBANKS MORSE 1800 1 STAGE SPLIT CASE PUMP 1823B, 3550 RPM, 60 Hz, IMPELLER: 444A251 8.1875", WITH 40 HP MOTOR
6	4" x 2 1/2" REDUCER, FLANGED
7	6" FLEXIBLE COUPLING, FLANGED
8	4" DUCTILE IRON SPOOL, FLANGED
9	4" AMES PUMP CONTROL VALVE, MODEL 980GS-16
10	1/2" SCHEDULE 40 STEEL NIPPLE
11	1/2" AMERICAN VALVE M300 BRASS GATE VALVE
12	1/2" SCHEDULE 40 STEEL TUBING
13	-30 TO 100 PSI GLYCERIN FILLED COMPOUND PRESSURE GAUGE
14	300 PSI GLYCERIN FILLED PRESSURE GAUGE

NOTES:

1. PIPING SHALL BE OF DUCTILE IRON CONSTRUCTION UNLESS NOTED OTHERWISE.
2. PIPE SUPPORTS SHALL BE SUPPLIED AND INSTALLED AS NEEDED.
3. CONTRACTOR SHALL FURNISH AND INSTALL TUBING, SOLENOIDS, AND LIMIT SWITCHES TO MAKE PROPOSED PUMP CONTROL VALVE FUNCTION PROPERLY USING INPUTS FROM THE PROPOSED PUMP DIRECTOR DETAILED ON SHEETS E1 AND E2.



DISCLAIMER:  
ALTHOUGH THIS DATA HAS BEEN TESTED BY ANDERSON & ASSOCIATES, NO WARRANTY  
EXPRESSED OR IMPLIED IS MADE BY ANDERSON & ASSOCIATES AS TO ITS ACCURACY, NOR  
SHALL THE FACT OF DISTRIBUTION CONSTITUTE ANY SUCH WARRANTY, AND NO  
RESPONSIBILITY IS ASSUMED BY ANDERSON & ASSOCIATES IN CONNECTION THEREWITH



**ANDERSON & ASSOCIATES, INC.**  
Professional Design Services  
www.andassoc.com

100 Ardmore St.  
Blacksburg, Va. 24060  
540-552-5592

DATE : 13 APR 12  
DESIGNED: DAA  
DRAWN : BJM  
CHECKED : SMS  
QA / QC : JKD

REV.#

1

5

COMMENTS  
ADDED GAUGES  
1ST REVIEW  
RECORD

DATE  
25 MAY 12  
06 JUL 12  
04 SEP 13

**SOUTH PEAK DEVELOPMENT**  
PHASE I WATER SYSTEM IMPROVEMENTS

**FRANKLIN ROAD PUMP STATION**  
**PLAN & SECTIONS**

DOCUMENT NO.  
**26787 - 023**

SHEET  
12 OF 30

Dunford, Carmen / 9/4/2013 10:45 AM / \\apoprojects\projects\26\26787\engineering\design\plans\plan\_set\26787\_south\_peak\_waterline\_sheets\_record\_drawings.dwg