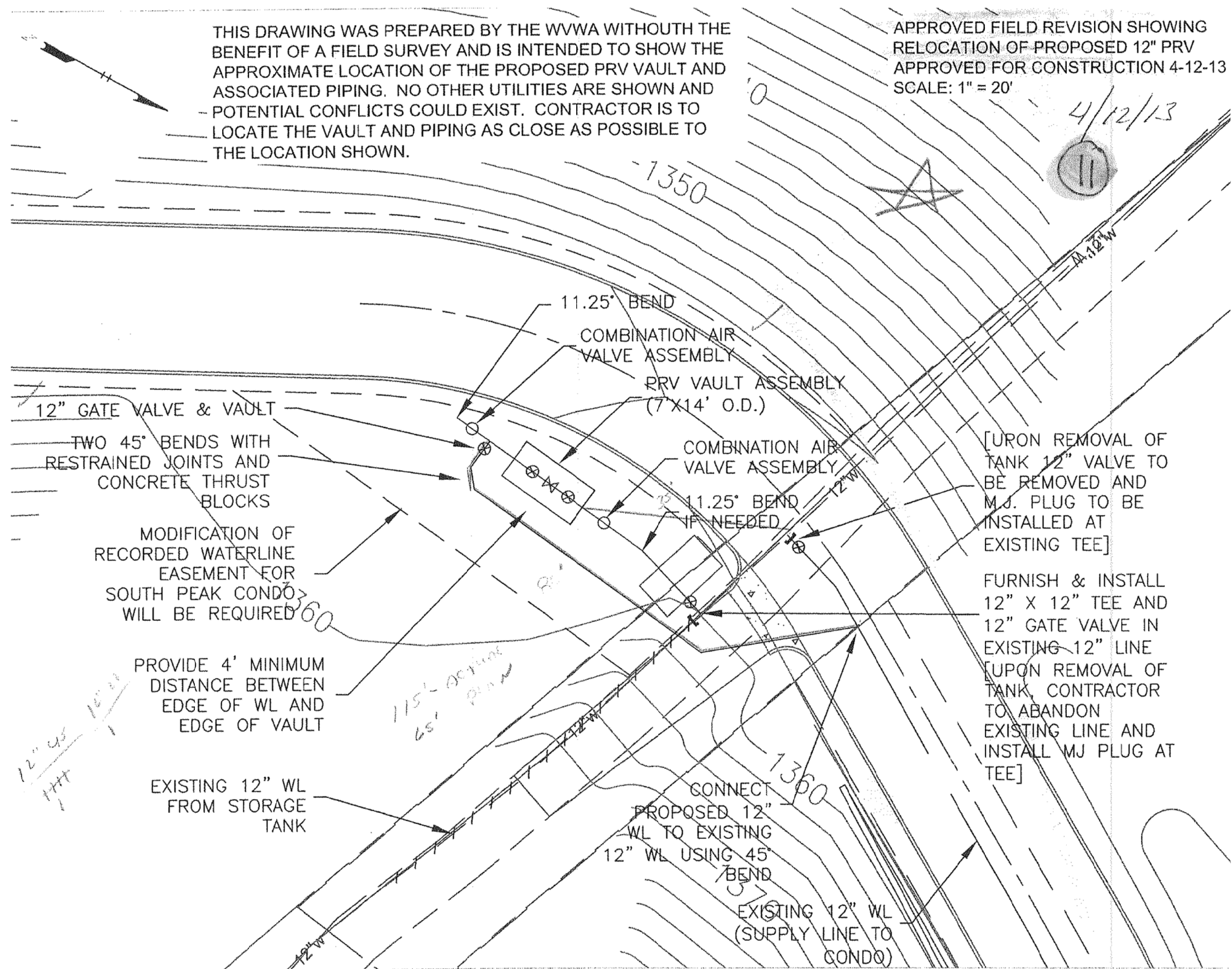


DISCLAIMER:
ALTHOUGH THIS DATA HAS BEEN TESTED BY ANDERSON & ASSOCIATES, NO WARRANTY EXPRESSED OR IMPLIED IS MADE BY ANDERSON & ASSOCIATES AS TO ITS ACCURACY, NOR SHALL THE FACT OF DISTRIBUTION CONSTITUTE ANY SUCH WARRANTY, AND NO RESPONSIBILITY IS ASSUMED BY ANDERSON & ASSOCIATES IN CONNECTION THEREWITH

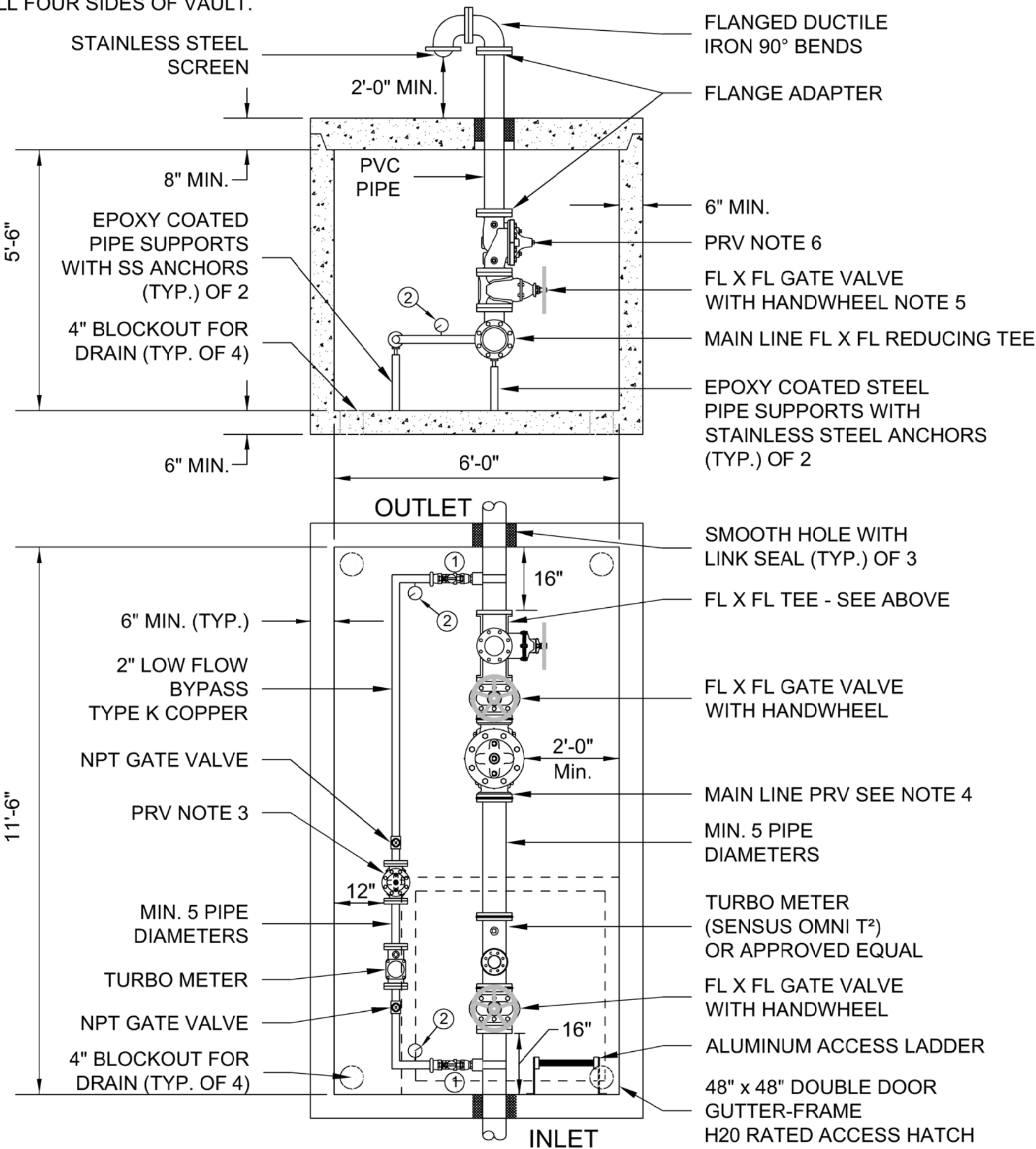


SOUTH PEAK PRV SITE PLAN
25 12.5 0 25 50 75
SCALE IN FEET

*SEE SKETCH #9 ON SHEET 19

- NOTES:
- GROUND ELEVATION OF THE PROPOSED SOUTH PEAK PRV = 1360'.
 - THE DOWNSTREAM HYDRAULIC GRADE OF THE PROPOSED PRV SHALL BE SET TO 1445' OR APPROXIMATELY 37 PSI.
 - VERIFY EXISTING LINE SIZES PRIOR TO BEGINNING WORK.
 - THE HYDRAULIC GRADE OF THE PROPOSED PRESSURE RELIEF VALVE SHALL BE SET TO 1479' OR APPROXIMATELY 52 PSI.
 - CONTRACTOR SHALL INSTALL PRV VAULT WITH A MINIMUM OF 6" CLEARANCE FROM THE VAULT TOP TO THE FINISHED GRADE AND FINAL GRADING SHALL MAINTAIN POSITIVE DRAINAGE AWAY FROM THE VAULT.

- 2" CORPORATION STOP, MUELLER H-15000 OR EQUIVALENT.
- LIQUID FILLED PRESSURE GAUGE.
- 2" FLANGED PRESSURE REGULATING VALVE (CLA-VAL MODEL 90-01) SET AT WORKING PRESSURE.
- FLANGE x FLANGE MAIN LINE PRESSURE REGULATING VALVE (CLA-VAL MODEL 90-01) SET AT (SEE NOTE "B" ABOVE). 690-01 MAY BE ALLOWED IN SOME INSTALLATIONS, CONFIRM WITH PARTICIPATING UTILITY.
- FLANGE x FLANGE GATE VALVE, WITH HAND WHEEL. ONE SIZE LESS THAN MAIN LINE.
- FLANGE x FLANGE PRESSURE RELIEF VALVE, ONE SIZE LESS THAN MAIN LINE (CLA-VAL MODEL 650-01) SET AT (SEE NOTE "D" ABOVE).
- VAULT SHALL BE PRE-CAST REINFORCED CONCRETE.
- MAIN LINE (INLET, OUTLET, AND INTERIOR) PIPING SHALL BE FLANGED - PLAIN END, OR PLAIN END DUCTILE IRON PIPE WITH APPROVED FLANGE ADAPTER. MIN. PRESSURE CLASS 350 OR THICKNESS CLASS 50.
- VAULT TO BE INSTALLED ON MIN. 6" COMPACTED VDOT #57 STONE WITH FILTER FABRIC PLACED BETWEEN BOTTOM OF VAULT AND STONE BEDDING. FILTER FABRIC TO EXTEND VERTICALLY A MINIMUM OF 6" ON ALL FOUR SIDES OF VAULT.



WESTERN VIRGINIA REGIONAL - CONSTRUCTION DETAIL

MAIN LINE - PRESSURE REDUCING VALVE ASSEMBLY

01/01/12

W-14

PRV ASSEMBLY DETAIL

NOT TO SCALE



ANDERSON & ASSOCIATES, INC.
Professional Design Services
www.andassoc.com

100 Ardmore St.
Blacksburg, Va. 24060
540-552-5592

DATE : 13 APR 12
DESIGNED: DAA
DRAWN : BJM
CHECKED : SMS
QA / QC : JKD

REV. #
5
6
7

COMMENTS
1ST REVIEW
2ND REVIEW
RECORD

DATE
06 JUL 12
20 AUG 12
04 SEP 13

SOUTH PEAK DEVELOPMENT
PHASE I WATER SYSTEM IMPROVEMENTS

SOUTH PEAK PRV
SITE PLAN & DETAIL SHEET

DOCUMENT NO.
26787 - 024
13 SHEET
OF 30