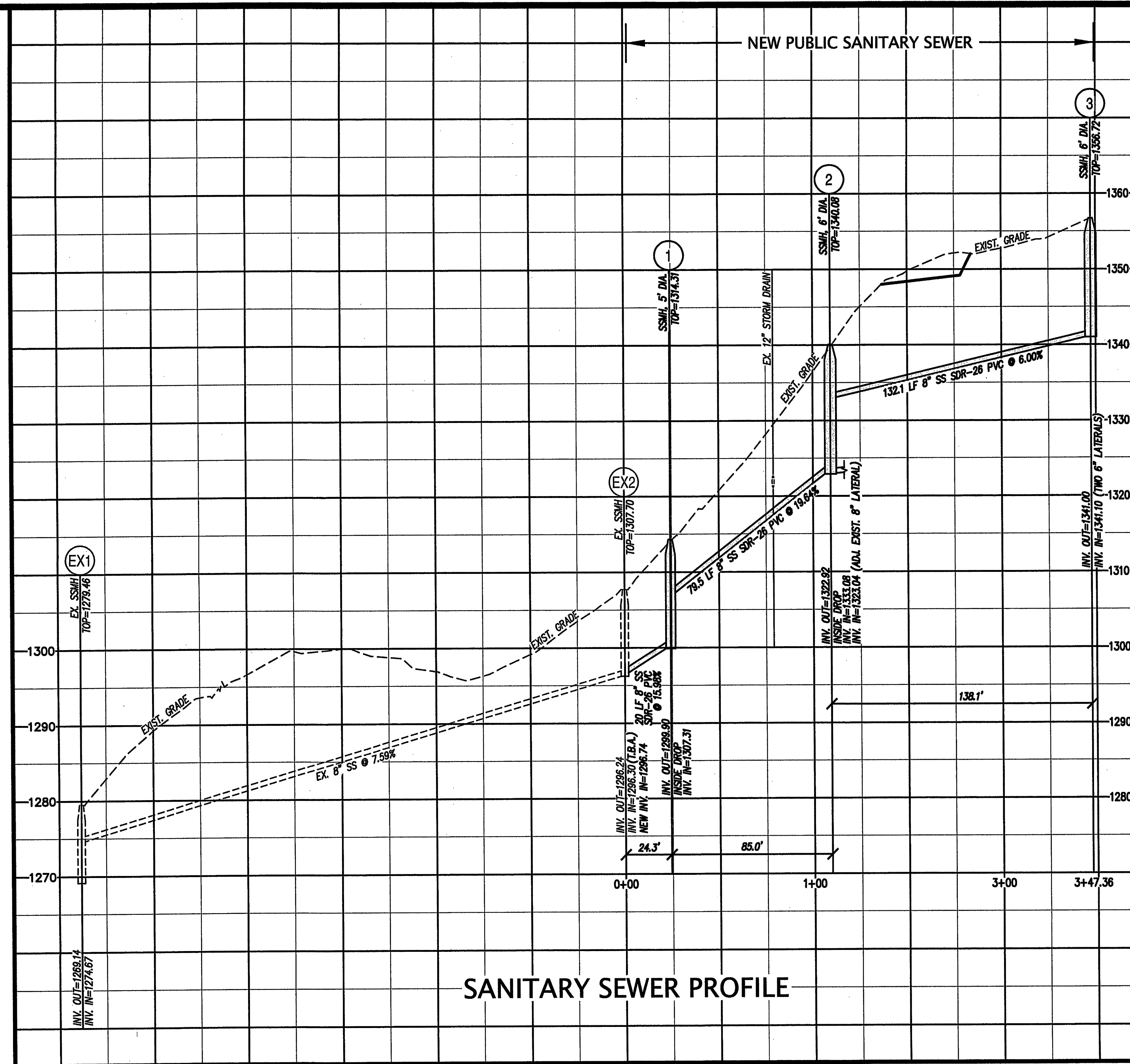
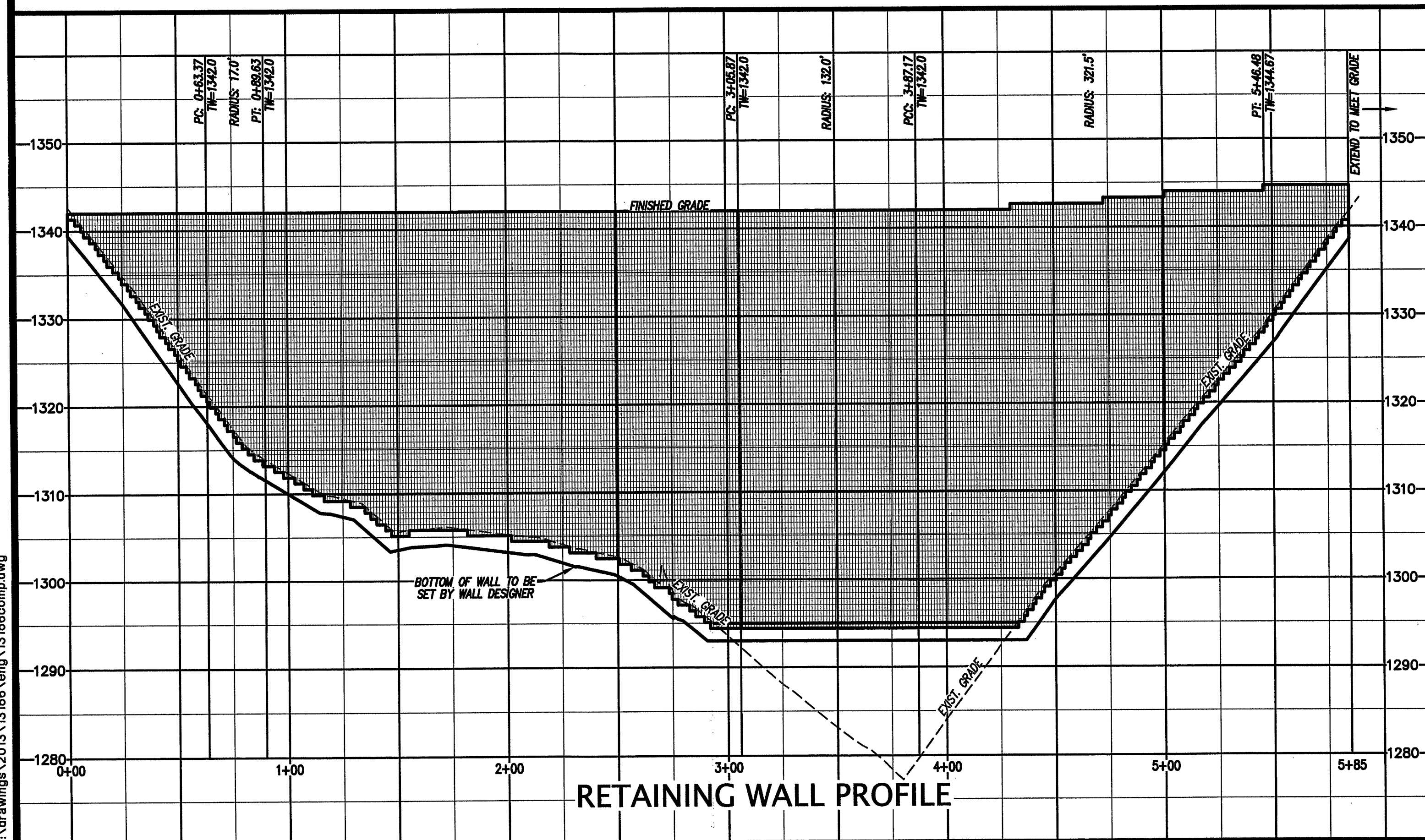


**SANITARY SEWER
HORIZONTAL AND SLOPE DISTANCE DETAIL**
NO SCALE



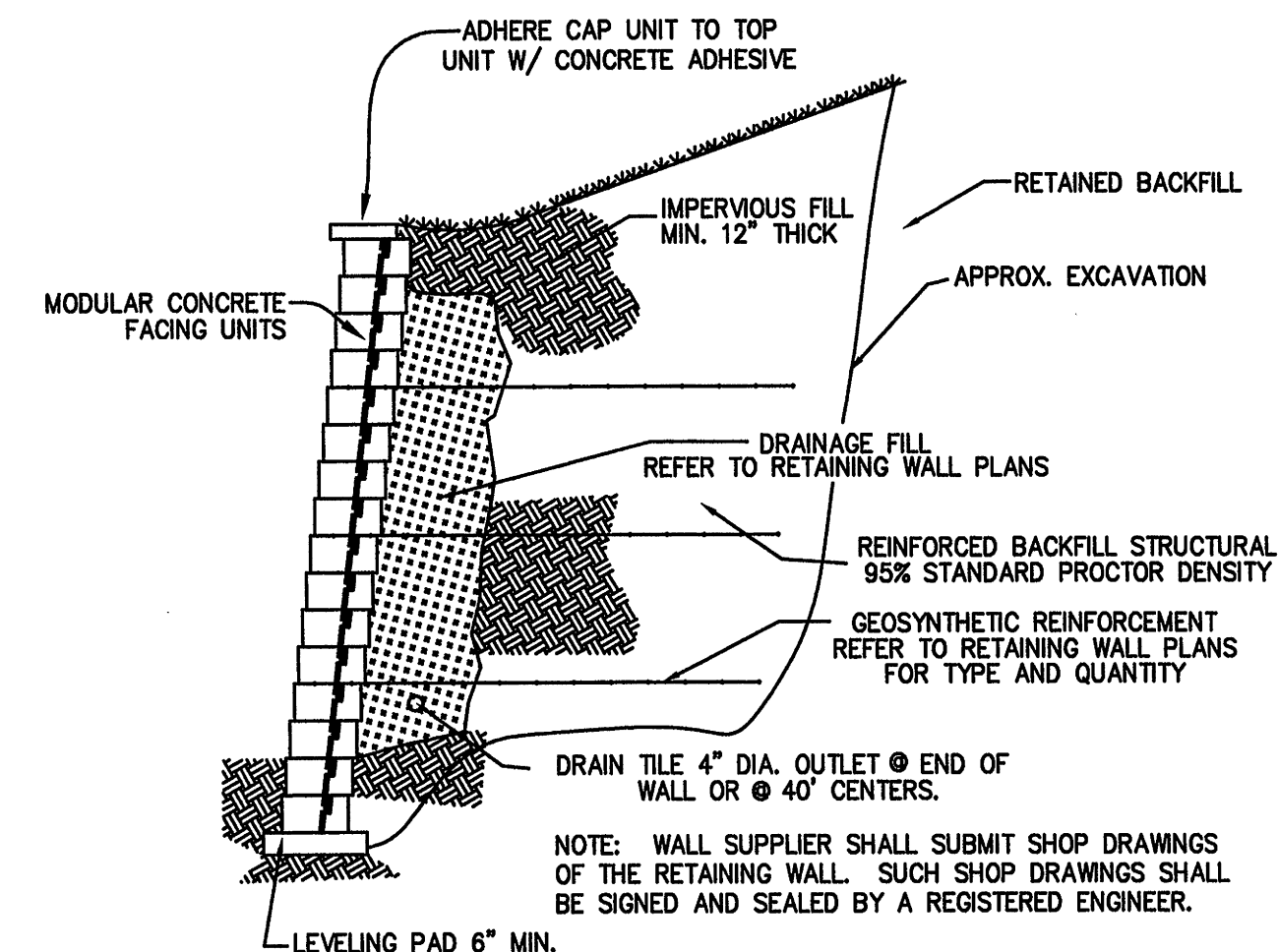
SANITARY SEWER PROFILE



RETAINING WALL PROFILE

RETAINING WALL NOTES:

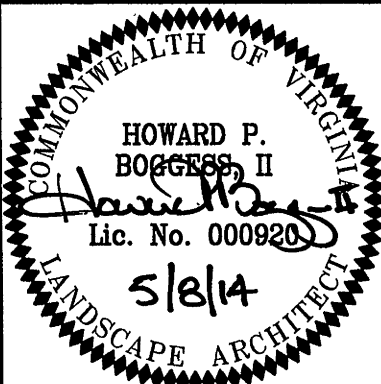
1. WALL DETAILS AND PROFILES SHOWN IN THESE PLANS ARE FOR SCHEMATIC DETAIL ONLY.
2. REFER TO PLANS ENTITLED "ALLAN BLOCK AB CLASSIC SEGMENTAL RETAINING WALL / SOUTH PEAK CONDOMINIUM - PHASE II" BY CIRCEO GEOTECHNICAL ENGINEERING, P.C., DATED 4/11/14, FOR COMPLETE RETAINING WALL PLANS AND DETAILS.
3. WALL DESIGNER SHALL PROVIDE TO THE OWNER DESIGN DRAWINGS FOR THE RETAINING WALL. RETAINING WALL DESIGN DRAWINGS SHALL INCLUDE TYPE AND STYLE OF WALLS AND INCLUDE HANDRAIL/GUARDRAIL REQUIREMENTS AND DESIGN. DRAWINGS SHALL BE SIGNED AND SEALED BY A REGISTERED PROFESSIONAL ENGINEER IN THE STATE OF VIRGINIA. WALL INFORMATION SHOWN IN THESE PLANS ARE FOR SCHEMATIC DETAIL ONLY. LUMSDEN ASSOCIATES ASSUMES NO RESPONSIBILITY OR LIABILITY RELATING TO FAILURES RESULTING FROM SAME.
4. A QUALIFIED GEOTECHNICAL ENGINEER SHOULD MONITOR THE INSTALLATION OF THE RETAINING WALL AND THE CONSTRUCTION OF THE CUT AND FILL SLOPES TO INSURE ADEQUATE SOIL COMPACTION, TESTING, STABILIZATION, SLOPE STABILITY, AND STRUCTURAL INTEGRITY, ETC. GEOTECHNICAL ENGINEER SHALL BE LICENSED AS A PROFESSIONAL ENGINEER IN THE STATE OF VIRGINIA.
5. ALL RETAINING WALLS OVER 2' IN HEIGHT MUST BE APPROVED AND PERMITTED BY ROANOKE COUNTY.
6. ALL RETAINING WALLS 4 FEET OR GREATER IN HEIGHT MUST BE DESIGNED BY A PROFESSIONAL ENGINEER.



WALL SECTION
NOT TO SCALE

APPROVED

LUMSDEN ASSOCIATES, P.C.
ENGINEERS-SURVEYORS-PLANNERS
ROANOKE, VIRGINIA



**SANITARY SEWER
AND RETAINING
WALL PROFILES**

GRADING & UTILITY RELOCATION PLAN

FOR
SOUTH PEAK CONDOMINIUM

PREPARED FOR
SMITH/PACKETT
CAVE SPRING MAGISTERIAL DISTRICT
COUNTY OF ROANOKE, VIRGINIA

NO.	DATE	DESCRIPTION
1		
2		
3		
4		
5		

DATE: May 8, 2014

SCALE: 1" = 40'(H), 1" = 10'(V)

COMMISSION NO. 13-166

SHEET 5 OF 8

PHONE: (540) 774-4411
FAX: (540) 772-9445
E-MAIL: MAIL@LUMSDENPC.COM

4664 BRAMBLETON AVENUE
P.O. BOX 20669
ROANOKE, VIRGINIA 24018