

**MAR. 8, 2013**  
 Drawn By: ARB/JEF  
 Designed By: JEF  
 Checked By: WTA  
 Date: 3/08/2013

**Mattern & Craig**  
CONSULTING ENGINEERS • SURVEYORS

701 FIRST STREET, S.W.  
ROANOKE, VIRGINIA 24016  
(540) 345-9342  
FAX (540) 345-7893

THE LOWERY AT SOUTH LAK  
SMITH/PACKET MED-COM, LLC  
DETAILS & SECTIONS - WWA SEWER  
DETAILS  
ROANOKE COUNTY, VIRGINIA

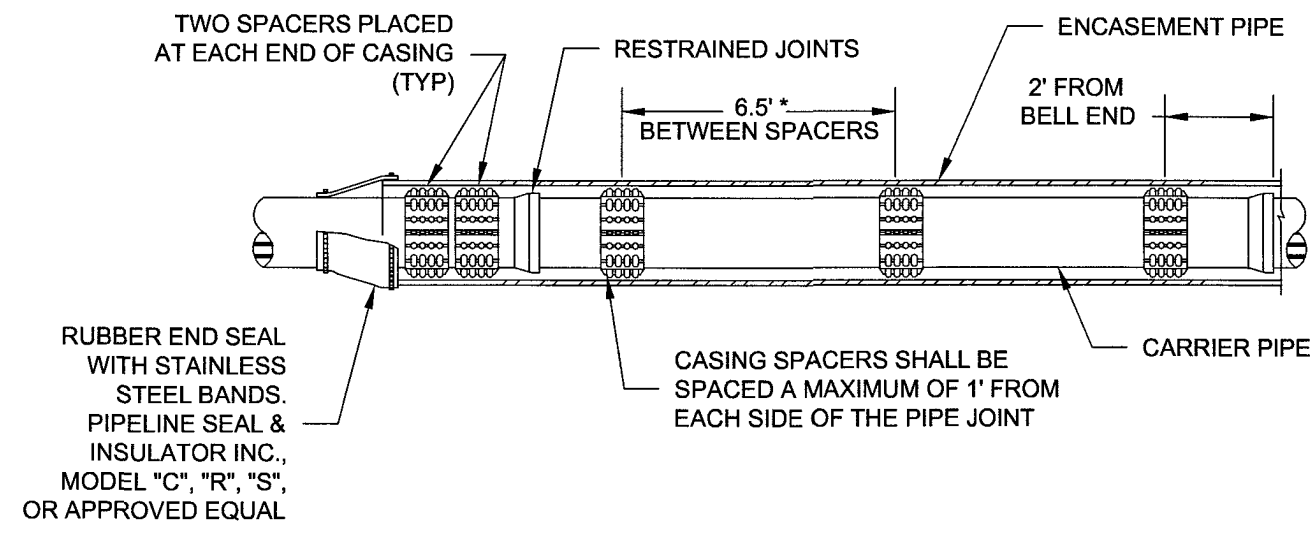
Vertical Scale:

PHOTOGRAPHY COURTESY OF

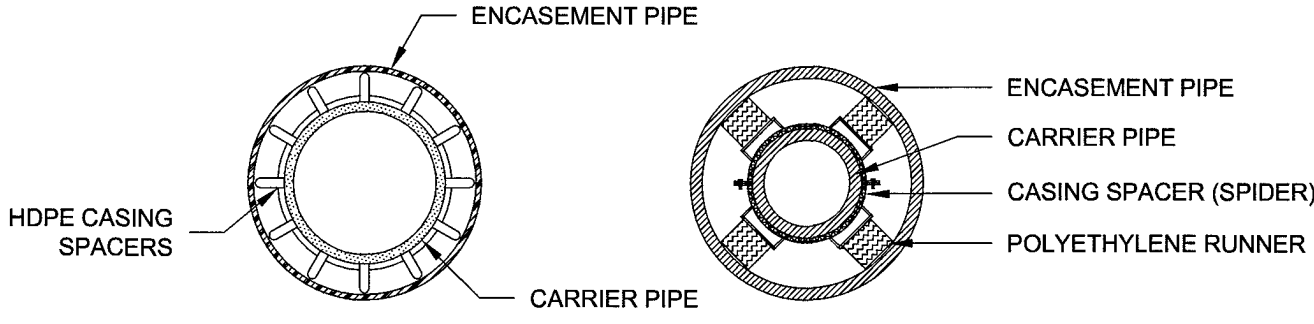
3101C

C-15A

1. A 1" DRAIN WILL BE REQUIRED ON THE LOWER END OF THE ENCASEMENT PIPE.
2. SPACERS SHALL BE RAGI HDPE SPIDER OR EQUIVALENT.
3. SPACERS SHALL BE SPACED 6 1/2" ON SEWER PIPE.
4. CARRIER PIPE SHALL BE DUCTILE OR HDPE IN ACCORDANCE WITH REGIONAL STANDARDS.
5. ENCASEMENT PIPE TO BE STEEL IN ACCORDANCE WITH VDOT STANDARD DETAIL EP-1, OR HDPE AS SPECIFIED IN THE STANDARDS IF APPROVED BY THE PARTICIPATING UTILITY.
6. CONCRETE ENCASEMENT PIPE WILL NOT BE ALLOWED.
7. DIAMETER OF ENCASEMENT PIPE TO BE DETERMINED BY PARTICIPATING UTILITY.



\* ADDITIONAL SPACING ALLOWED AS RECOMMENDED BY PIPE MANUFACTURER.

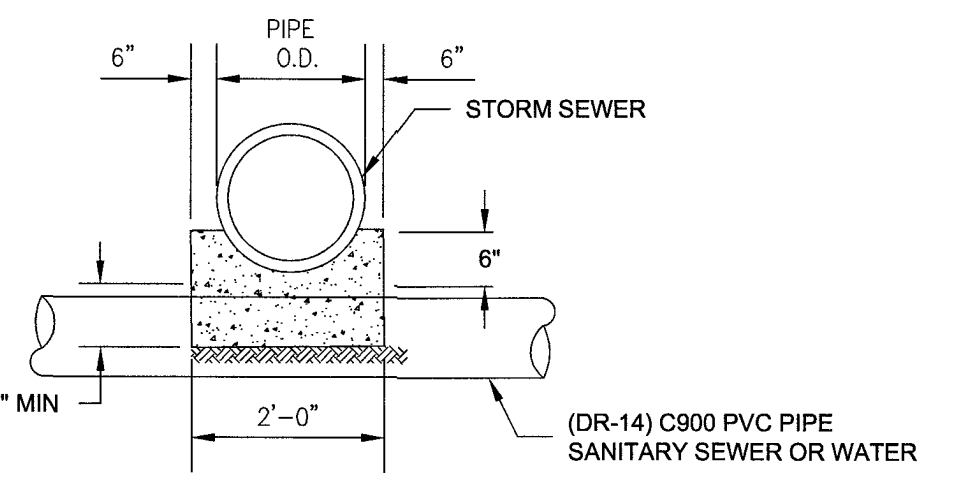
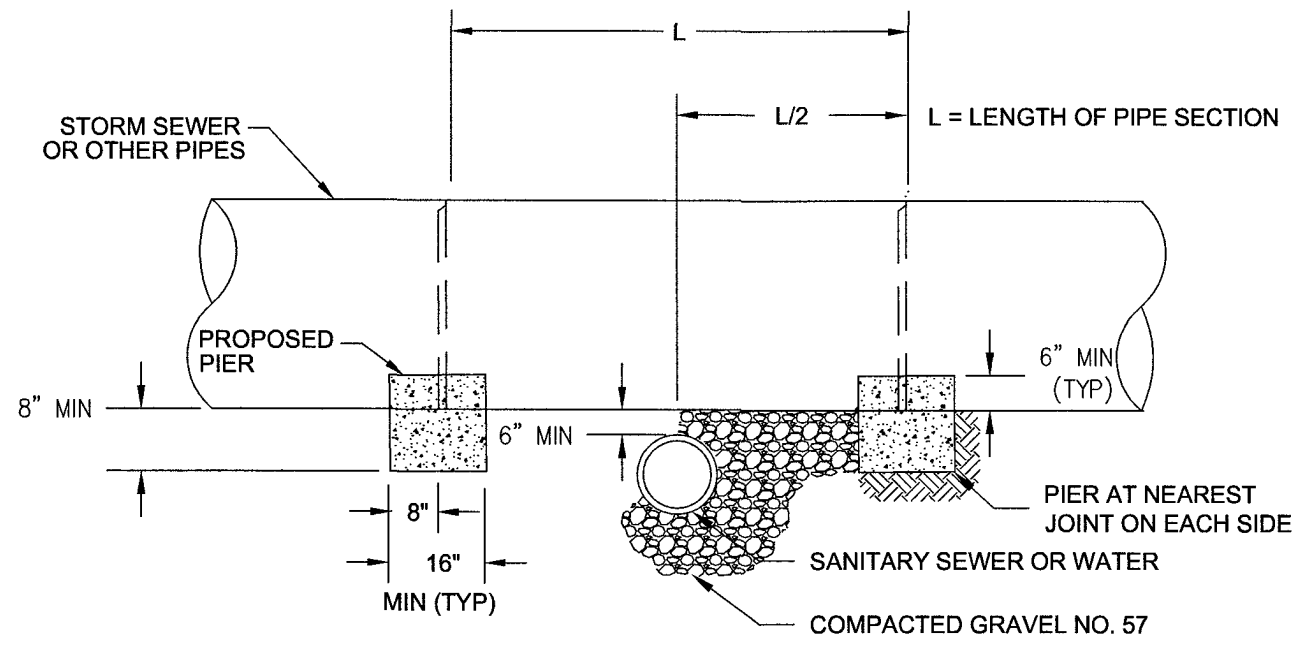


WESTERN VIRGINIA REGIONAL - CONSTRUCTION DETAIL

## PIPE SUPPORT IN ENCASEMENT PIPE

**6-6**

1. PIER REQUIRED WHEN STORM DRAIN OR OTHER PIPES CROSSES OVER THE OTHER UTILITY WITH A VERTICAL CLEARANCE OF LESS THAN 18".
2. PIER TO BE BUILT ON UNDISTURBED EARTH.
3. CONCRETE TO BE READY MIX, CLASS A3.



**WESTERN VIRGINIA REGIONAL - CONSTRUCTION DETAIL**

CONCRETE PIER

**G-8**