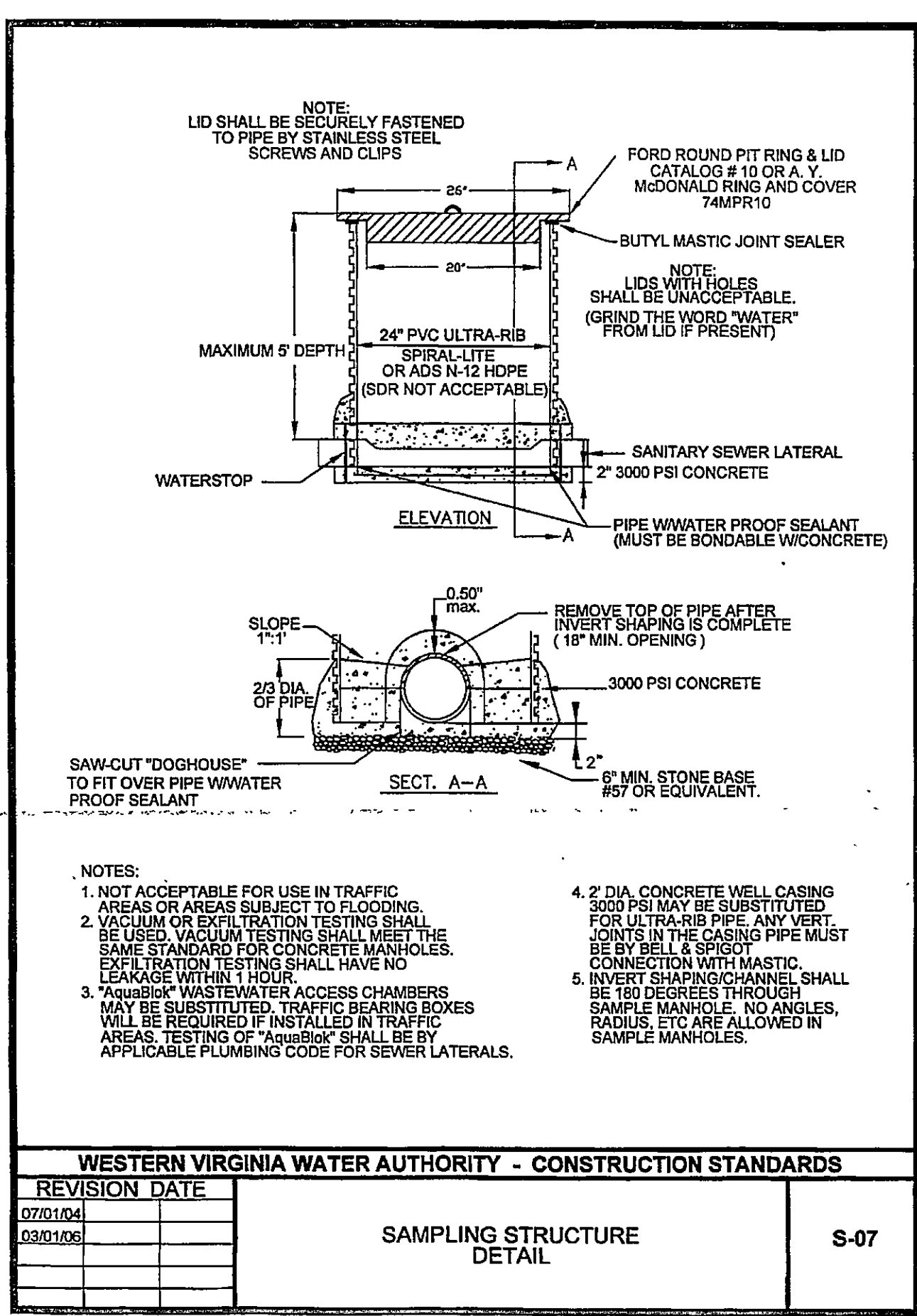
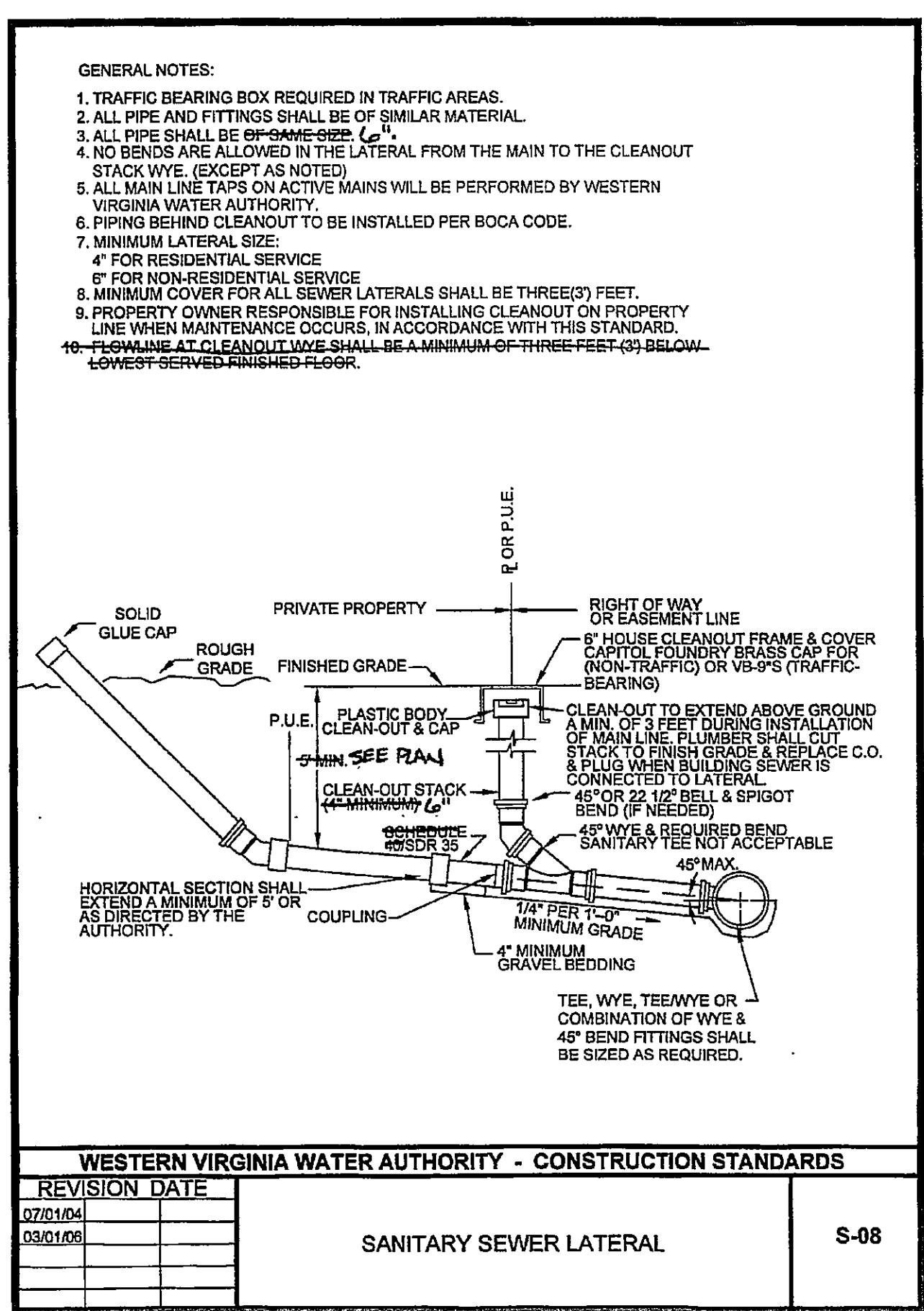


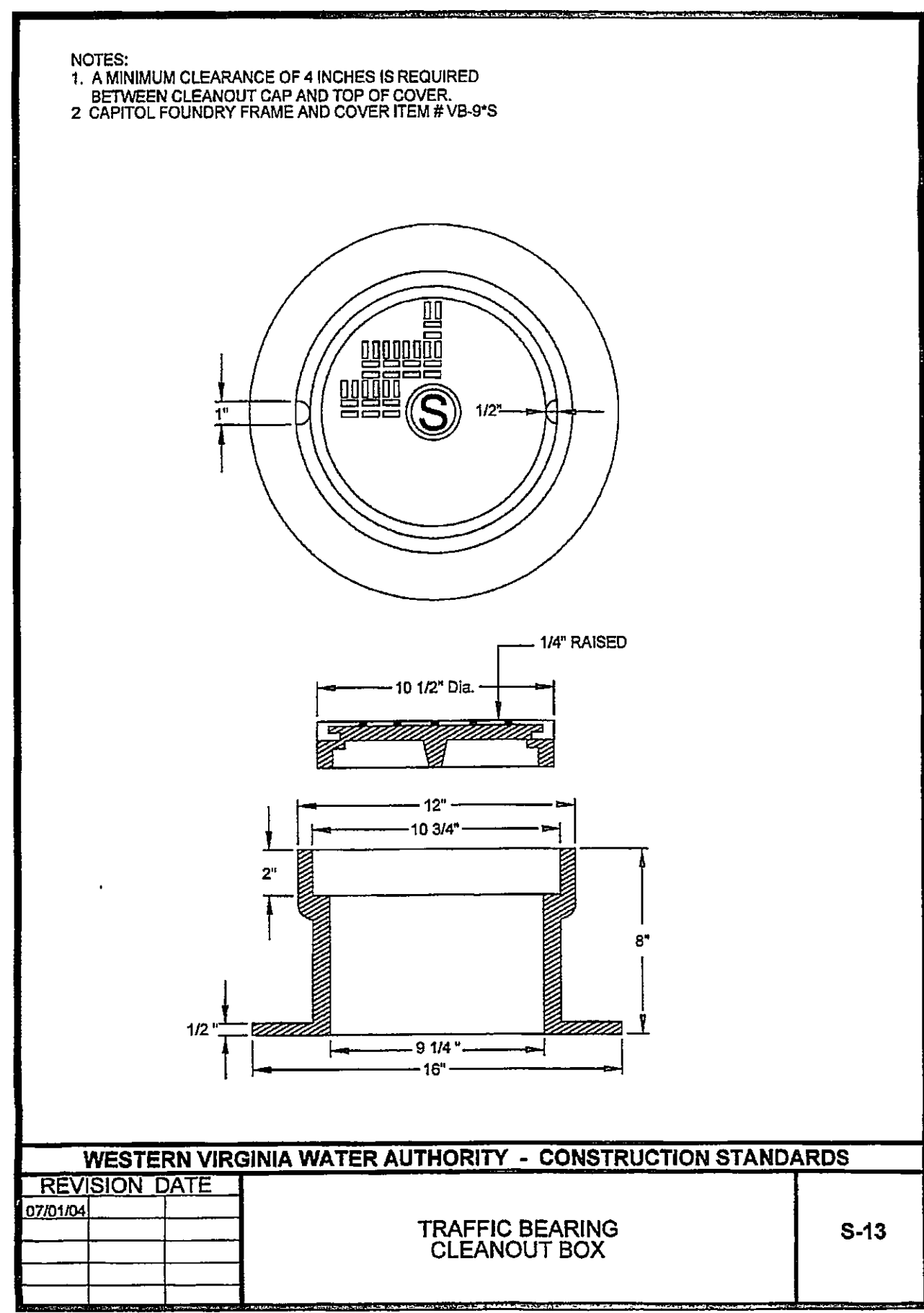
F:\4012am\STARBUCKS\05105888\_Starbucks\_Roanoke\Design\588-CX-DETAILS.dwg  
Printed: Apr 05, 2007 - 3:56pm  
Printed By: gjonson  
COPYRIGHT © 2006 ALL RIGHTS RESERVED. DRAWINGS MAY NOT BE REPRODUCED IN ANY FORM WITHOUT WRITTEN PERMISSION



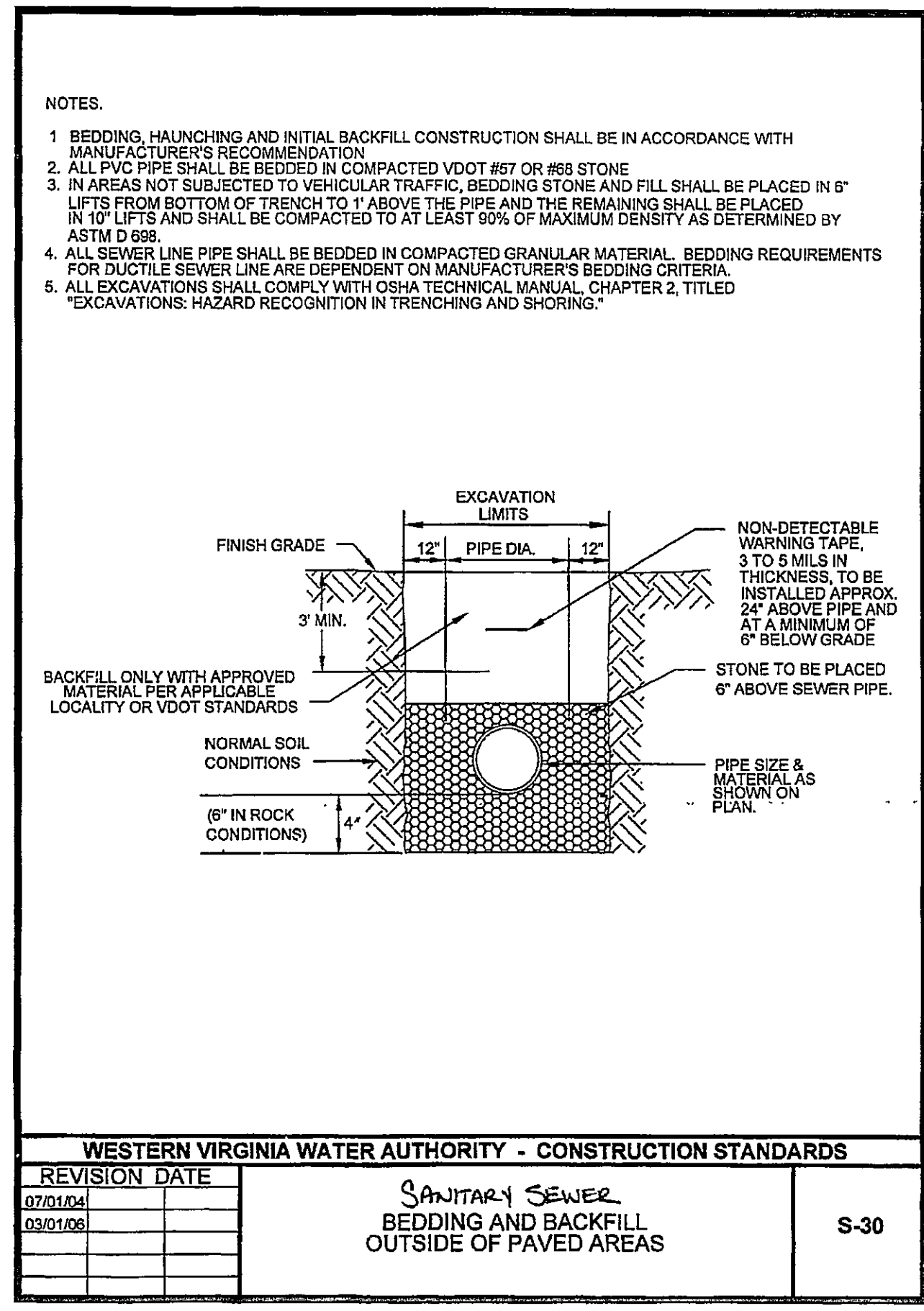
SANITARY SEWER DETAIL 01



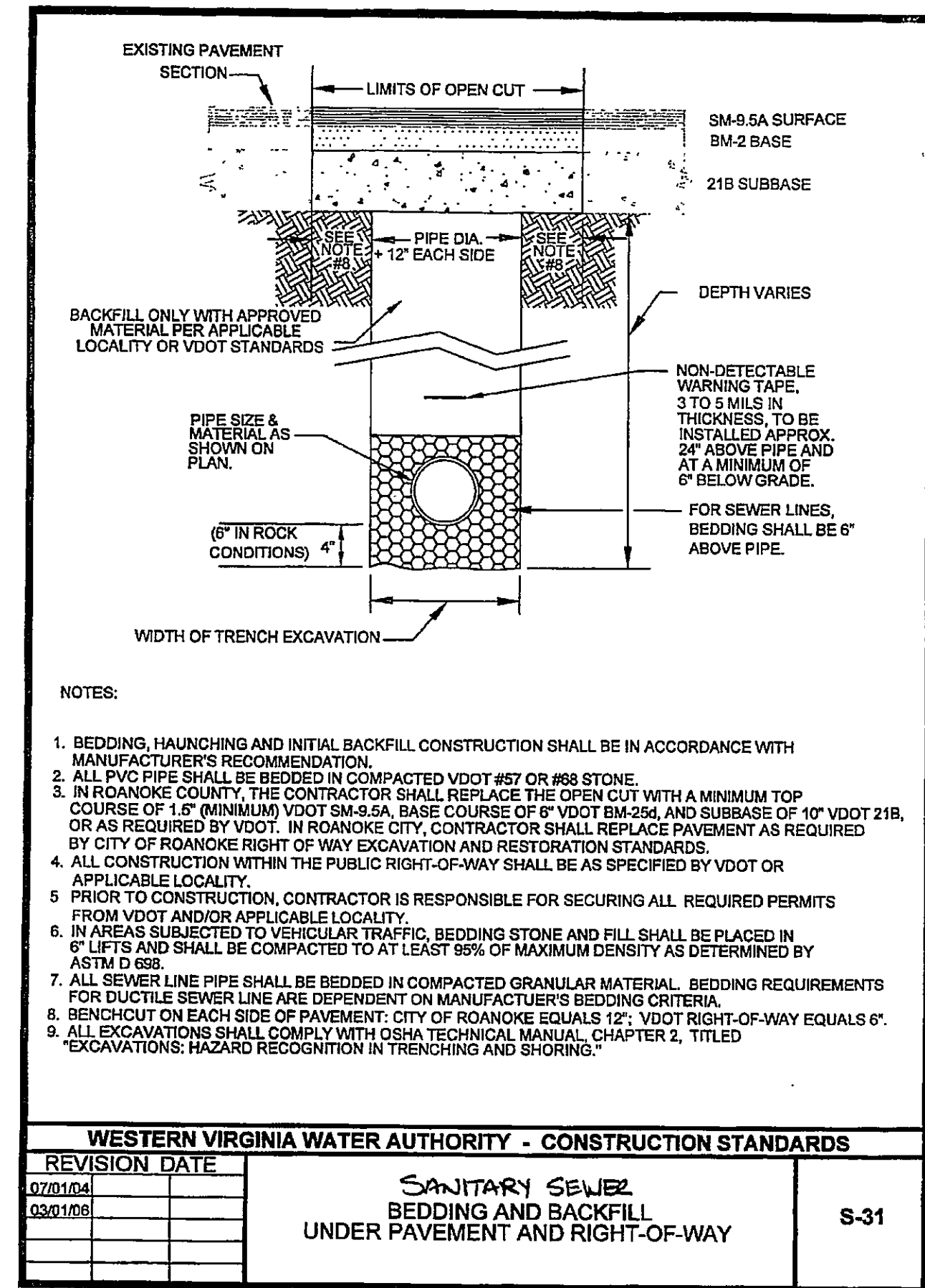
SANITARY SEWER DETAIL 02



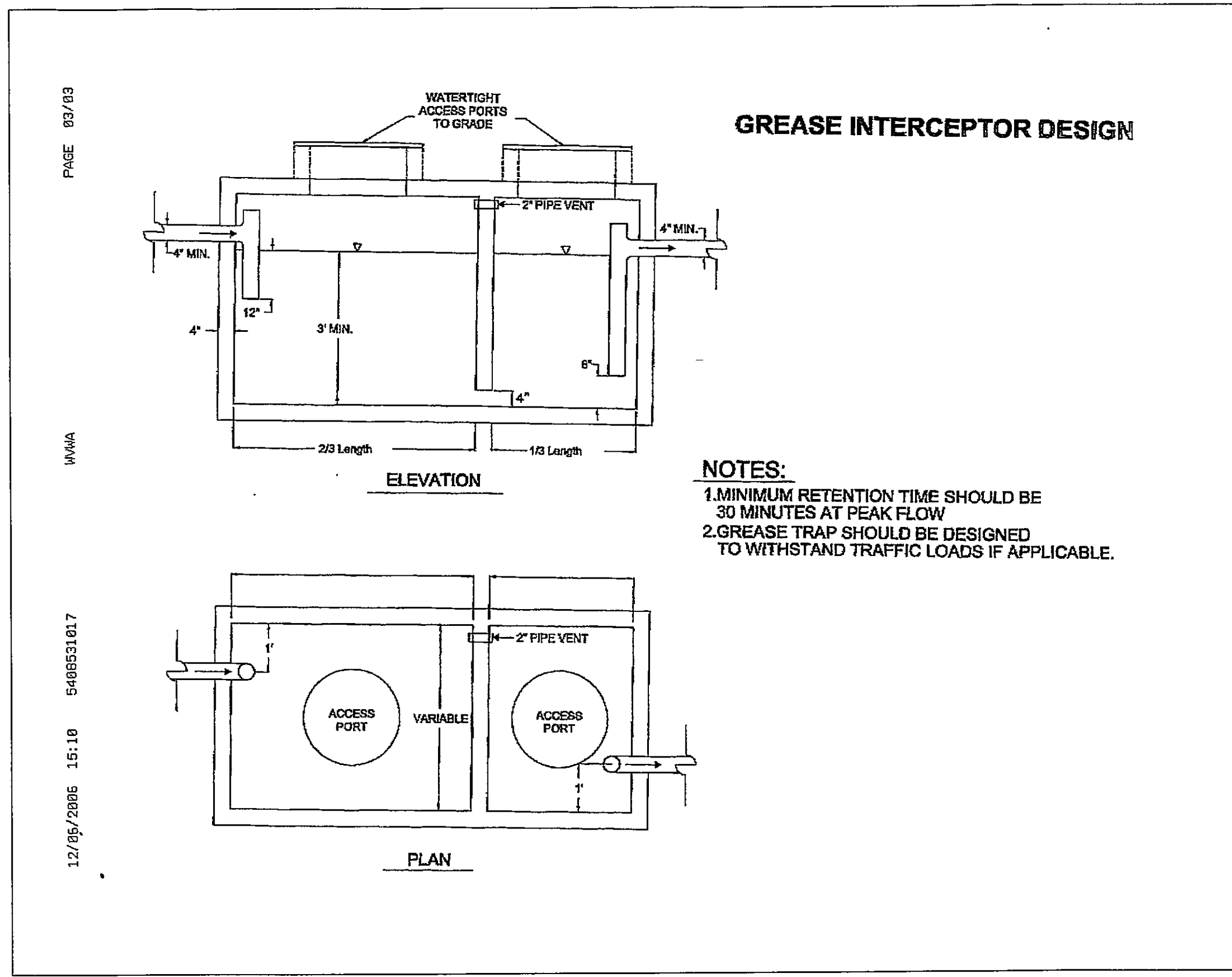
SANITARY SEWER DETAIL 03



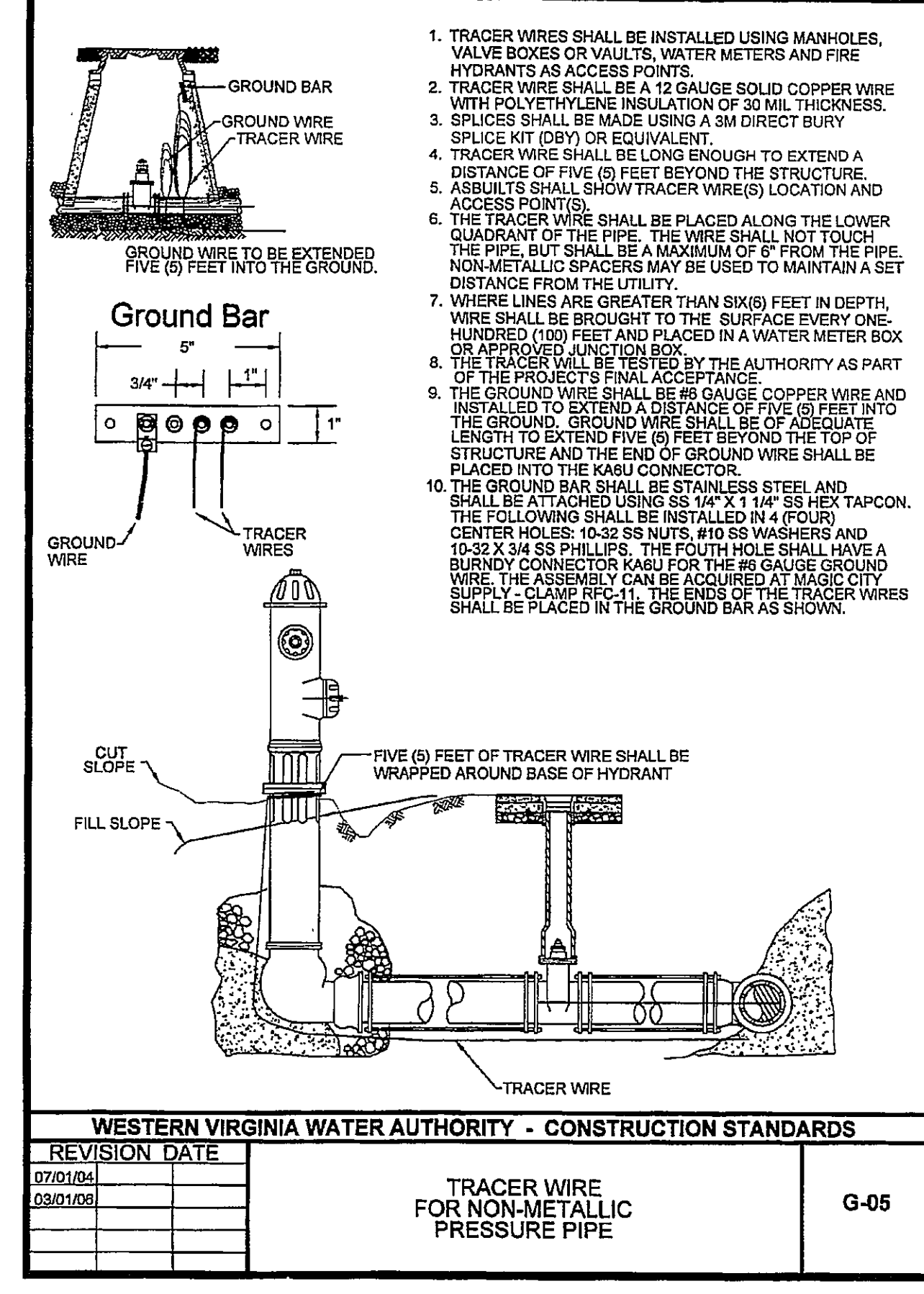
SANITARY SEWER DETAIL 04



SANITARY SEWER DETAIL 05



GREASE INTERCEPTOR



WATER & SANITARY SEWER DETAIL 07

COMMUNAL TH OF VIRGINIA  
ALAN E. POWERS  
P.E. 00483  
PROFESSIONAL ENGINEER

ALAN E. POWERS  
P.E. 00483  
PROFESSIONAL ENGINEER

HUSSEY, GAY, BELL & DEYOUNG, INC.  
OF SOUTH CAROLINA  
CONSULTING ENGINEERS  
471 WANDO PARK BOULEVARD  
SUITE 201 (29464)  
MT. PLEASANT, SC 29465  
TEL (843) 849-7500  
WWW.HGB.COM

REVISIONS:  
# 12/02/2007 PER CITY COMMENTS

DESIGNED	DRAWN	CHECKED
GFJ	GFJ	AET

DATE: NOV. 17, 2006

JOB NO. 405105988

SCALE: NO SCALE

STARBUCKS COFFEE SHOP  
FRANKLIN ROAD AT GRIFFIN ROAD & SOUTHERN HILLS DRIVE  
CITY OF ROANOKE, VIRGINIA  
FOR  
MOSELEY REA  
SITE DETAIL SHEET

DRAWING NUMBER  
C12