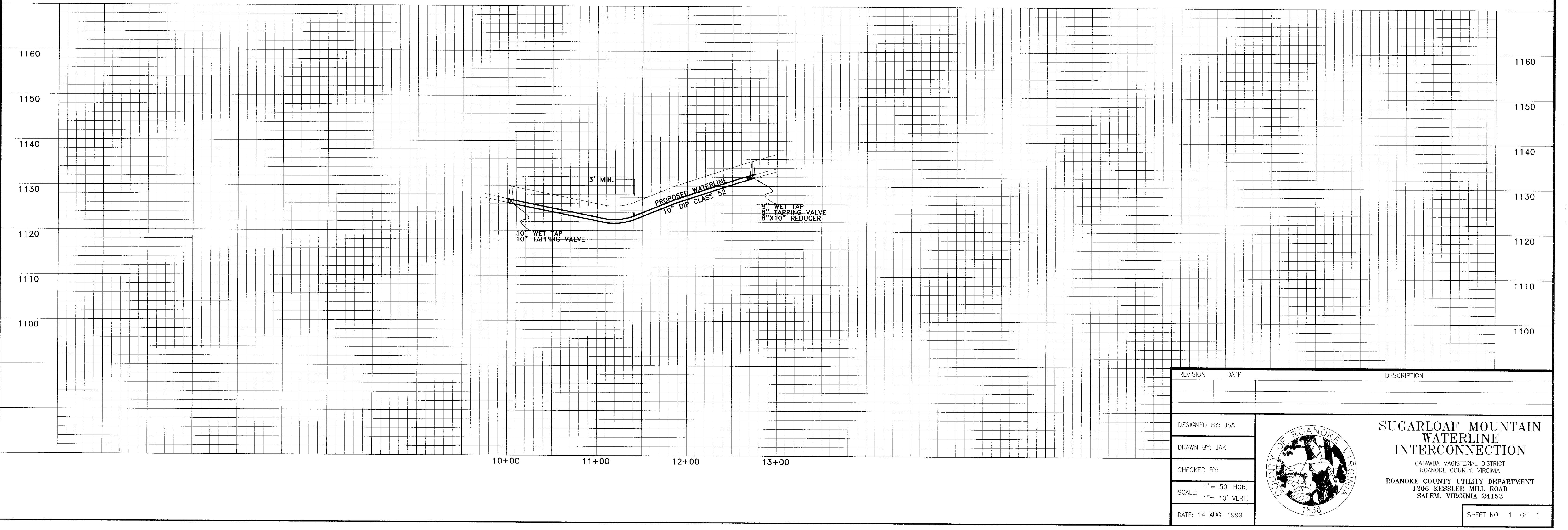


INSPECTOR NOTES:

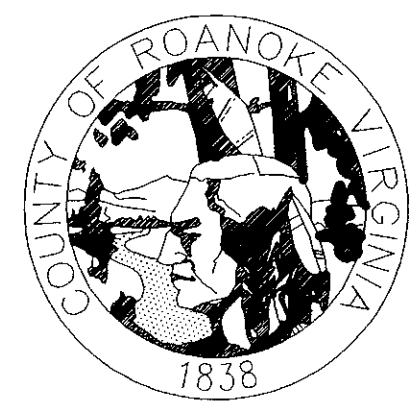
1. 117.2' OF 6" SDR-35 SEWER LATERAL SERVICING 5020 SUGAR LOAF MOUNTAIN ROAD. 6" SDR-35 IS IN THE SAME TRENCH AS THE WATERLINE WITH NO VERTICAL SEPERATION AND 18" HORIZONTAL SEPERATION FROM CENTER OF SEWER TO CENTER OF WATER

2. CONNECTION WAS MADE BY ROANOKE COUNTY THUS VOIDING INSPECTION. LOCATION OF THE 8"x10" REDUCER, IN RELATION TO THE 8" G.V. AND ARV IS NOT KNOWN AND THUS NOT REFLECTED ON THESE AS-BUILT DRAWINGS



REVISION	DATE	DESCRIPTION

DESIGNED BY: JSA
DRAWN BY: JAK
CHECKED BY:
SCALE: 1"= 50' HOR.
1"= 10' VERT.
DATE: 14 AUG. 1999



**SUGARLOAF MOUNTAIN
WATERLINE
INTERCONNECTION**
CATAWBA MAGISTERIAL DISTRICT
ROANOKE COUNTY, VIRGINIA
ROANOKE COUNTY UTILITY DEPARTMENT
1206 KESSLER MILL ROAD
SALEM, VIRGINIA 24153

SHEET NO. 1 OF 1