

EROSION & SEDIMENT CONTROL NARRATIVE:
THE EXISTING SITE IS ESSENTIALLY FLAT WITH LESS THAN 1/8" PER FOOT FALL FROM THE SOUTHWEST CORNER TO THE NORTHEAST CORNER. THE ADJACENT TOPOGRAPHY SLOPES APPROXIMATELY 1/8" PER FOOT TO THE NORTH AND TO THE EAST, AWAY FROM 9TH STREET AND DALE AVENUE. THERE IS A 6" DEPRESSION NEAR THE MIDDLE OF THE SITE. THE SITE PREVIOUSLY CONTAINED 3 HOUSES WITH CRAWL SPACES THAT HAVE BEEN LEVELLED OFF USING EXISTING SOIL ON THE SITE.

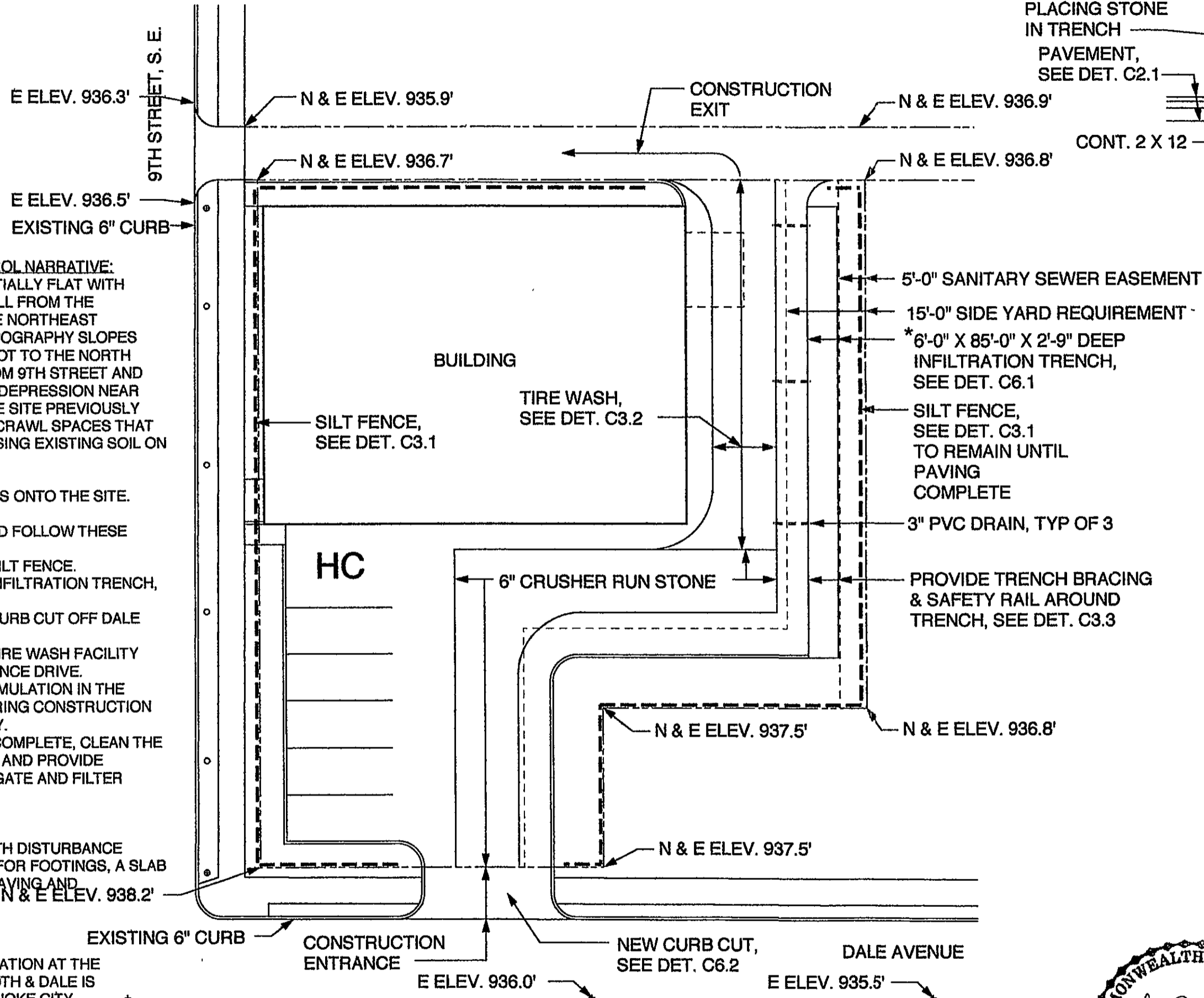
NO OFFSITE DRAINAGE FLOWS ONTO THE SITE.

CONTROL MEASURES SHOULD FOLLOW THESE STEPS:

1. PROVIDE THE INDICATED SILT FENCE.
2. PROVIDE THE INDICATED INFILTRATION TRENCH, LEFT OPEN.
3. PROVIDE THE INDICATED CURB CUT OFF DALE AVENUE.
4. PROVIDE THE INDICATED TIRE WASH FACILITY AND CRUSHER RUN ENTRANCE DRIVE.
5. MONITOR SEDIMENT ACCUMULATION IN THE INFILTRATION TRENCH DURING CONSTRUCTION AND CLEAN AS NECESSARY.
6. WHEN CONSTRUCTION IS COMPLETE, CLEAN THE TRENCH OF ALL SEDIMENT AND PROVIDE INDICATED STONE AGGREGATE AND FILTER MATERIAL.
7. REMOVE SILT FENCE.

THE SITE REQUIRES NO EARTH DISTURBANCE OTHER THAN PREPARATION FOR FOOTINGS, A SLAB ON GRADE AND INDICATED PAVING AND LANDSCAPING.

THE EXISTING ELEVATION AT THE INTERSECTION OF 9TH & DALE IS GIVEN BY THE ROANOKE CITY ENGINEER AS 937.8'



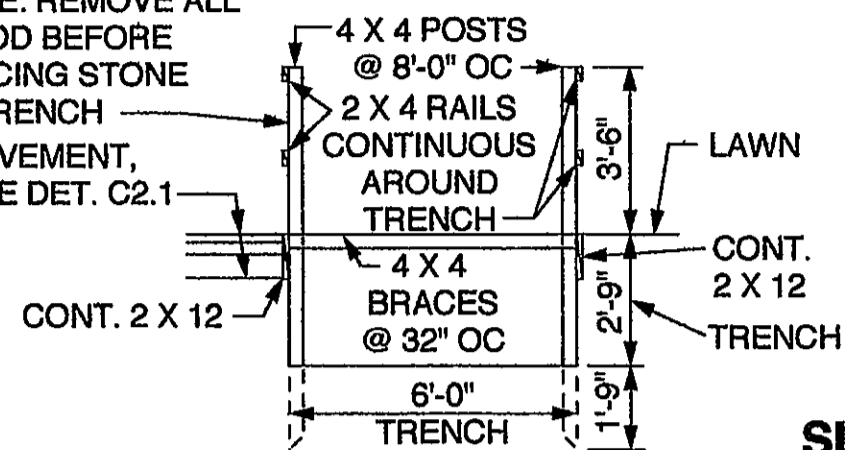
*NOTE: LEAVE INFILTRATION TRENCH OPEN UNTIL PAVEMENT AND CONSTRUCTION ARE COMPLETE. CLEAN TRENCH OF SILT BEFORE FILLING WITH AGGREGATE.

SITE PLAN

SCALE: 1" = 20'-0"

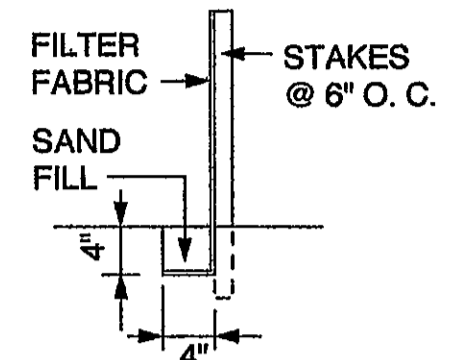
ELEV. = ELEVATION
E = EXISTING
N = NEW

NOTE: REMOVE ALL WOOD BEFORE PLACING STONE IN TRENCH
PAVEMENT, SEE DET. C2.1



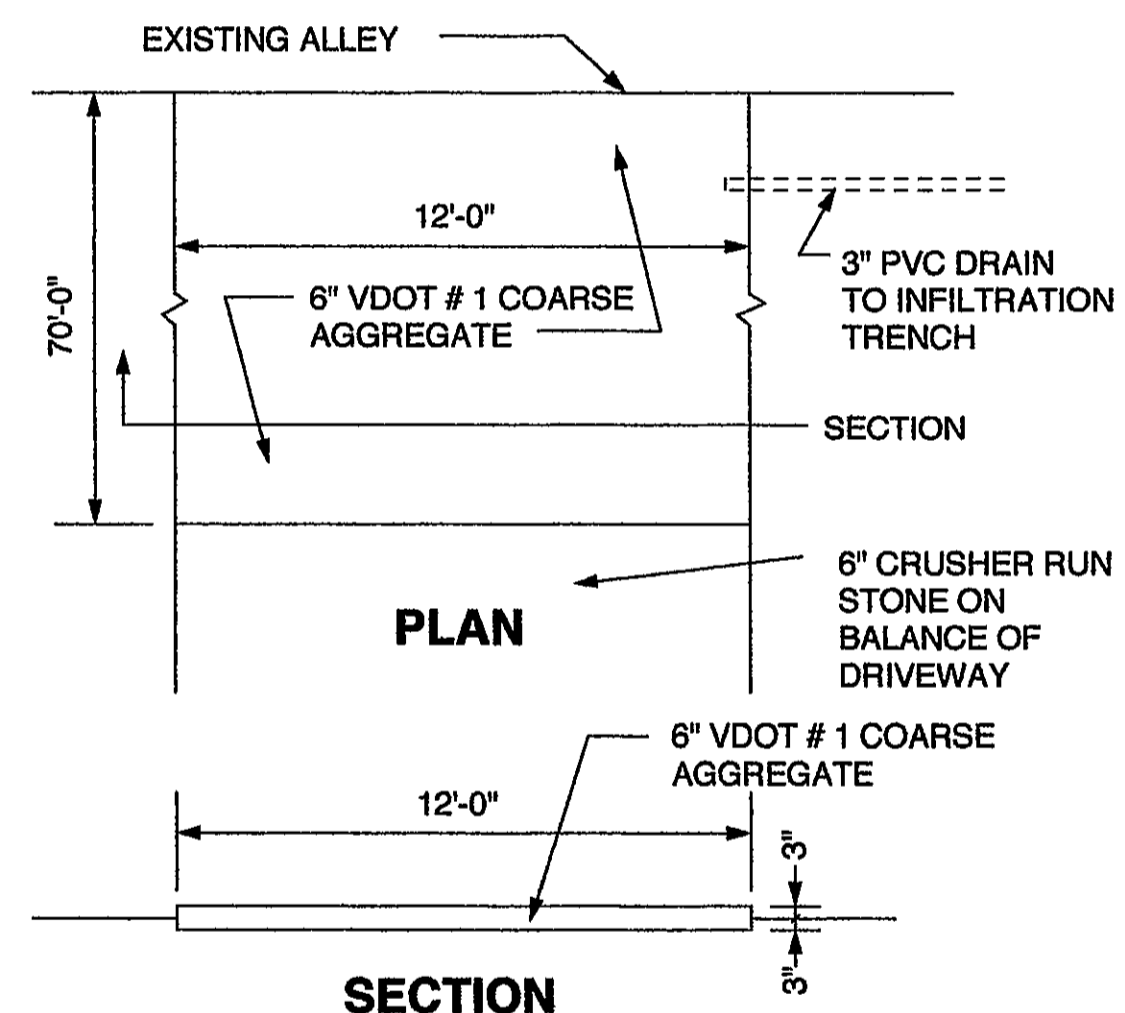
DETAIL C3.3

SCALE: 1/4" = 1'-0"



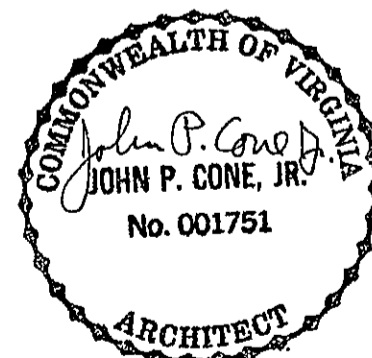
SILT FENCE DETAIL C3.1

SCALE: 3/4" = 1'-0"



TIRE WASH STATION DETAIL C3.2

SCALE: 1/4" = 1'-0"



EROSION & SEDIMENT CONTROL INSPECTOR:
MR. NORM PRATT, LICENSE # 18552, EXP. 3/30/07

SUPER "D" DRUG STORE PHARMACY

414 NINTH ST., S.E., ROANOKE, VA.

EROSION & SEDIMENT CONTROL PLAN

John P. Cone, Jr. Architect
Salem, Virginia

August, 2004