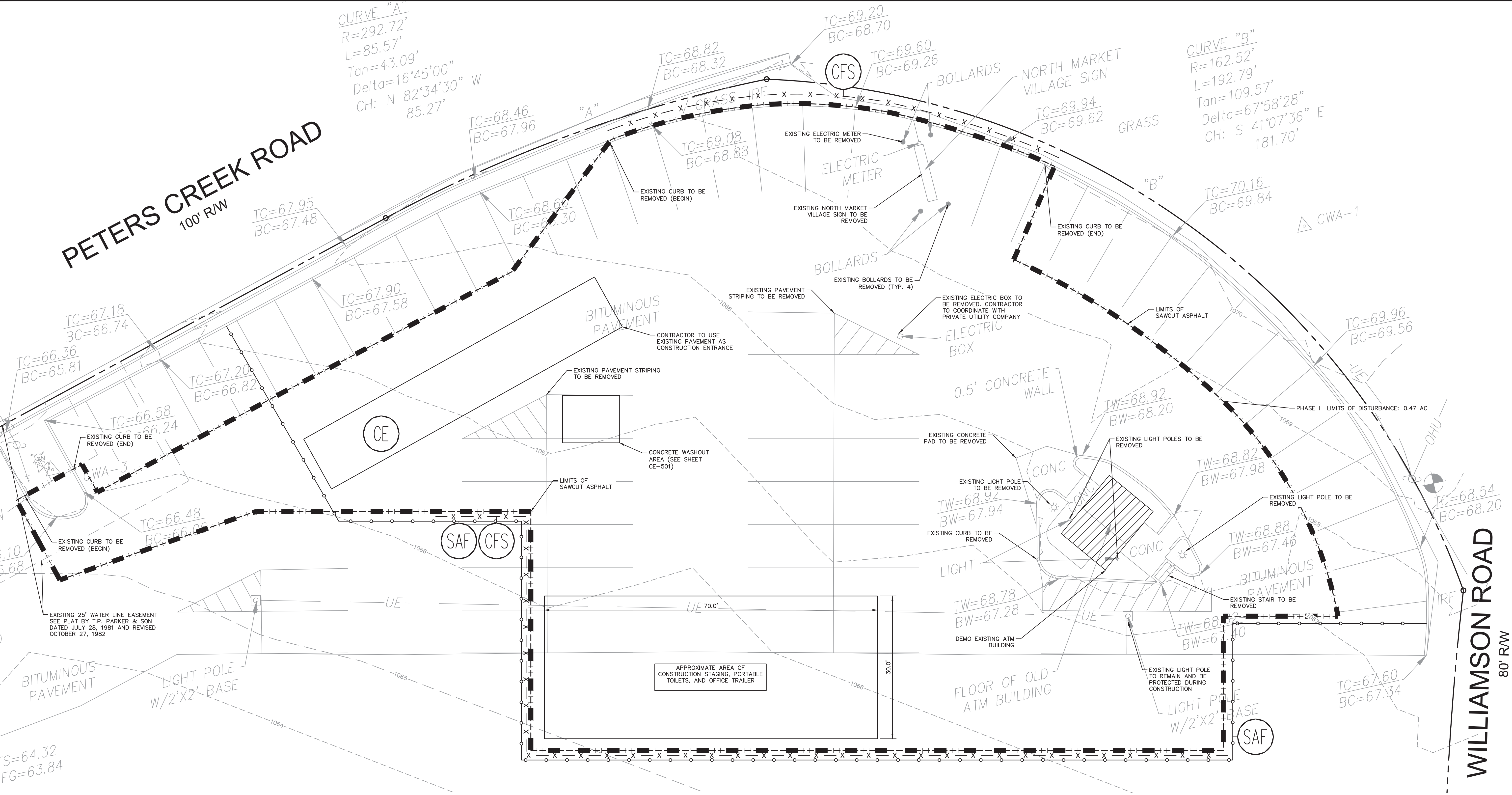


Plotted By: Anderson, Laura Sheet: Set: Kim Layout: CE-101 DEMOLITION & PHASE I EROSION & SEDIMENT CONTROL PLAN February 23, 2022 01:02:19pm K:\RIG-GVA\113418 - Take 5\005 - Williamson Rd - Roanoke\CAD\PlanSheets\CE-101 DEMOLITION & PHASE I EROSION & SEDIMENT CONTROL PLAN.dwg This document, together with the concepts and designs presented herein, is intended only for the specific purpose and client for which it was prepared. Reuse of and improper reliance on this document without written authorization and adaptation by Kimley-Horn and Associates, Inc. shall be without liability to Kimley-Horn and Associates, Inc.



TAKE 5
WILLIAMSON ROAD
PREPARED FOR
EB PARTNERS LLC

ROANOKE COUNTY

DEMOLITION & PHASE I EROSION & SEDIMENT CONTROL PLAN

VA

Kimley»Horn

© 2022 KIMLEY-HORN AND ASSOCIATES, INC.
1700 WILLOW LANE DR, SUITE 200, RICHMOND, VA 23230
PHONE: 804-673-3882
WWW.KIMLEY-HORN.COM

Professional Engineer
Laura P. Anderson
Lic. No. 069885
01/23/2013

REVISIONS

DATE

BY

SHEET NUMBER
CE-101

GRAPHIC SCALE IN FEET
0 5 10 20