

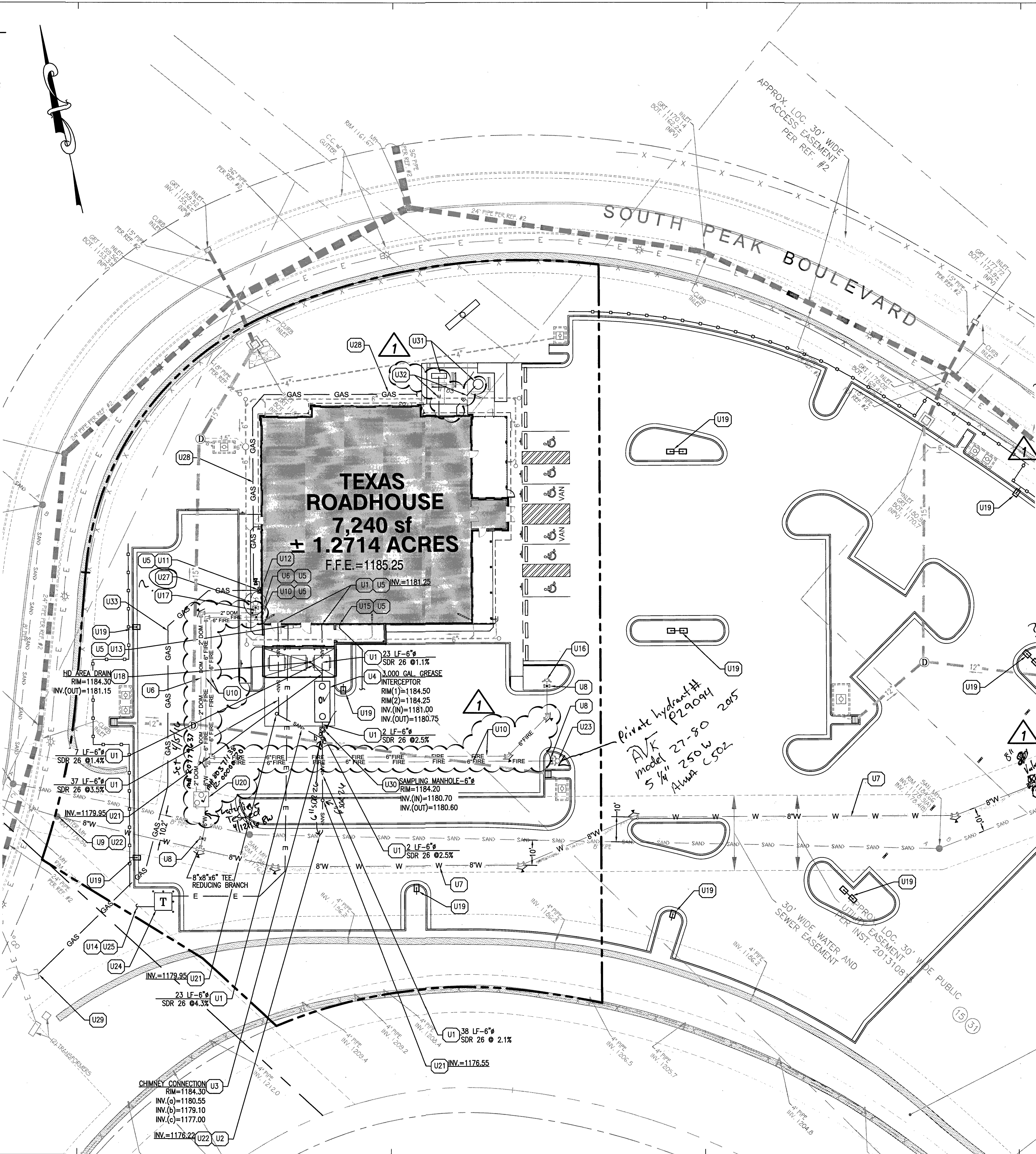
GENERAL UTILITY NOTES:

1. CONTRACTOR IS TO VERIFY THE LOCATION OF ALL EXISTING UTILITIES PRIOR TO CONSTRUCTION AND ENSURE NO CONFLICTS EXIST WITH PROPOSED IMPROVEMENTS. NOTIFY ENGINEER IMMEDIATELY IF UTILITIES ARE LOCATED DIFFERENTLY THAN SHOWN. THE CONTRACTOR SHALL COORDINATE WITH EACH RESPECTIVE UTILITY COMPANY IN ORDER TO RELOCATE IF NEEDED IN CONFORMANCE WITH THEIR GUIDELINES.
2. CONTRACTOR SHALL NOTIFY AND COORDINATE WITH THE APPROPRIATE UTILITY COMPANY PRIOR TO THE REMOVAL OF INDICATED UTILITIES ON SITE (SEE DEMOLITION PLAN). CONTRACTOR SHALL BE RESPONSIBLE FOR OBTAINING ANY PERMITS REQUIRED FOR DEMOLITION AND HAUL OFF FROM THE APPROPRIATE AUTHORITIES.
3. AUTHORIZATION MUST BE OBTAINED FROM THE DEPARTMENT OF PUBLIC WORKS TO CONSTRUCT, ALTER OR MODIFY A WATER OR SEWER LINE.
4. AT THE COMPLETION OF THE WATER AND/OR SEWER CONSTRUCTION AND PRIOR TO RECORDING THE FINAL PLAT, THE CONTRACTOR WILL FURNISH THE WATER SYSTEM INSPECTOR RECORD DRAWINGS OF THE PROJECT.
5. BUILDING CONTRACTOR SHALL BE RESPONSIBLE FOR COORDINATION WITH THE GAS COMPANY FOR THE CONSTRUCTION OF THE GAS LINE BETWEEN METER AND MAIN.
6. BUILDING CONTRACTOR SHALL BE RESPONSIBLE FOR COORDINATION WITH THE POWER COMPANY FOR THE CONSTRUCTION OF ELECTRICAL CONDUIT TO PROVIDE SERVICE TO THE TRANSFORMER.
7. THE CONTRACTOR SHALL BE RESPONSIBLE FOR VERIFYING, PRIOR TO CONSTRUCTION, ALL EXISTING LOCATIONS AND INVERT ELEVATIONS OF SANITARY SEWERS, STORM DRAINAGE, AND WATER MAINS. IF ANY INVERT ELEVATION VARIES MORE THAN 0.1 FT. FROM RECORD ELEVATIONS, THE CONTRACTOR SHALL NOTIFY THE ENGINEER IMMEDIATELY. WORK SHALL NOT PROCEED UNTIL THE CONTRACTOR IS NOTIFIED BY THE ENGINEER.
8. CONNECT TO EXISTING UTILITIES AND INSTALL UTILITIES IN COMPLIANCE WITH REQUIREMENTS OF APPROPRIATE JURISDICTIONAL AGENCIES.
9. COORDINATE WITH BUILDING PLANS TO ASSURE ACCURACY OF UTILITY CONNECTIONS AND COMPLIANCE WITH LOCAL CODES.
10. ALL SEWERS TO BE MAINTAINED THROUGHOUT CONSTRUCTION, INCLUDING CLEANING OF ANY SILT OR DEBRIS ACCUMULATED IN STRUCTURES.
11. ALL SURPLUS EXCAVATED MATERIAL FROM THE TRENCH SHALL BE DISPOSED OFF THE SITE BY CONTRACTOR.
12. COORDINATE EXACT TRENCHING, ROUTING, AND POINT OF TERMINATION WITH ALL UTILITY COMPANIES.
13. SEE GENERAL NOTES FOR ADDITIONAL INFORMATION.
14. WATER MAIN SHALL BE A MINIMUM OF SIX (6) INCHES AND HAVE A MINIMUM DEPTH OF 48 INCHES.
15. THE SANITARY SEWER AND POTABLE WATER LINES ARE TO BE SEPARATED BY AT LEAST 10 FEET HORIZONTALLY, OR THE POTABLE WATER LINE SHALL BE AT LEAST 18 INCHES VERTICALLY ABOVE THE SANITARY SEWER.
16. CONTRACTOR TO RECONFIGURE PROPOSED ELECTRIC/TELEPHONE/CABLE CONDUITS AS NECESSARY TO AVOID CONFLICT WITH TREES/LANDSCAPING. SEE LANDSCAPE PLANS FOR DETAILS.

PROPOSED LEGEND:

- | | |
|-------|---|
| ----- | PROPERTY LINE |
| ----- | EXISTING CURB LINE |
| ----- | PROPOSED CONCRETE CURB |
| ----- | ELECTRIC LINES |
| ----- | GAS LINES |
| ----- | CABLE & TELEPHONE DATA LINES |
| ----- | SAN- SANITARY SEWER LINES |
| ----- | DOM- DOMESTIC WATER LINES |
| ----- | FIRE- FIRE SERVICE WATER LINES |
| ----- | IRR- IRRIGATION WATER LINES |
| ----- | W- WATER MAIN |
| ----- | PROPOSED STORM SEWER PIPE |
| ----- | PROPOSED DRAINAGE STRUCTURES (SEE GRADING/DRAINAGE PLANS) |
| ----- | PROPOSED GREASE INTERCEPTOR |
| ----- | WATER VALVE. SEE SIZE INDICATED ON PLAN |
| ----- | M.J. 45° BEND |
| ----- | M.J. 22-1/2° BEND |
| ----- | M.J. 90° BEND |
| ----- | THUST BLOCKING. SEE CIVIL DETAILS. |
| ----- | PROPOSED LIGHT POLES |
| ----- | PROPOSED GAS METER |

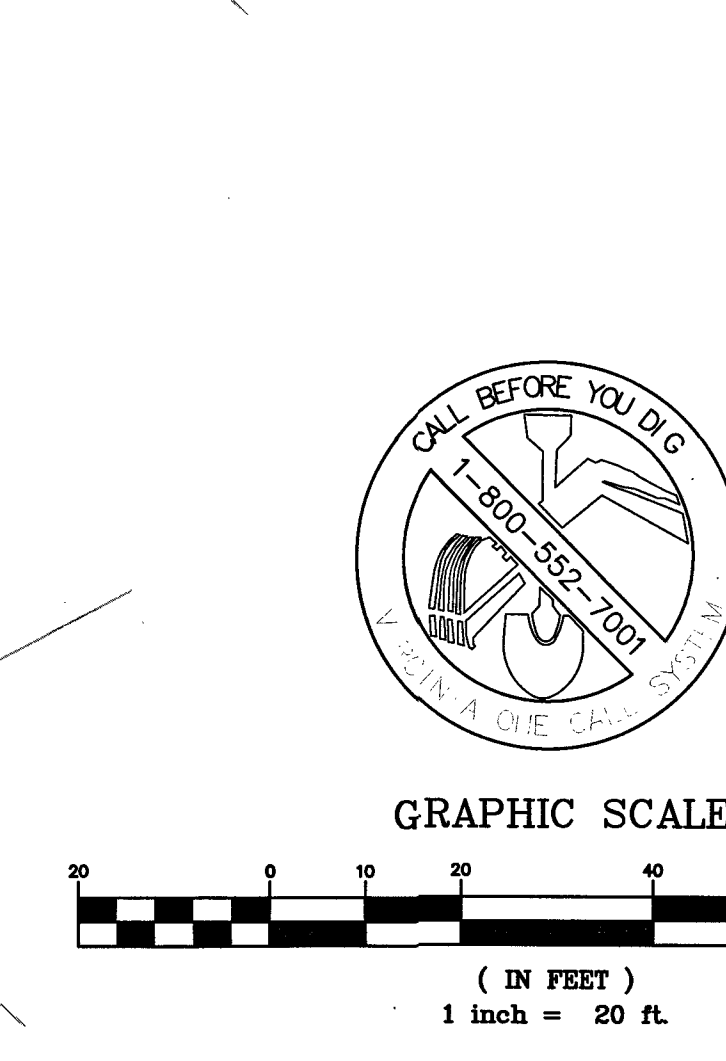
FOR BENCHMARK LOCATION SEE SHEET C3.1:
PK NAIL SET LOCATED AT PROPOSED ACCESS
DRIVE



UTILITY KEYNOTES

- U1 PROPOSED SANITARY SEWER PIPE (TYPICAL) (SEE DETAILS)
- U2 PROPOSED 6" SANITARY SEWER CONNECTION TO EXISTING 8" SEWER LINE. SEE DETAILS.
- U3 SANITARY SEWER CHIMNEY CONNECTION. (SEE DETAILS)
- U4 GREASE INTERCEPTOR. CONTRACTOR SHALL REFERENCE PLUMBING PLANS.
- U5 UTILITY CONNECTION TO BUILDING. SEE PLUMBING/ELECTRICAL DRAWINGS FOR EXACT BUILDING CONNECTIONS AND LOCATIONS.
- U6 2" WATER SERVICE. PROPOSED BACK FLOW PREVENTER INSTALLED IN BUILDING UTILITY ROOM. (SEE PLUMBING PLANS FOR DETAILS).
- U7 DUCTILE IRON WATERMAIN (SIZE AS NOTED, SEE PLUMBING PLANS FOR DETAILS)
- U8 PROPOSED GATE VALVE (TYPICAL) (SEE DETAILS)
- U9 CONNECT 8" WATER LINE TO EXISTING WATER MAIN AT EXISTING STUB PER DPW SPECIFICATIONS. (SEE PLUMBING PLANS FOR DETAILS) (SEE DETAILS)
- U10 6" DUCTILE IRON FIRE PROTECTION SERVICE. (SEE PLUMBING PLANS FOR DETAILS).
- U11 PROPOSED GAS METER PER GAS COMPANY SPECIFICATIONS.
- U12 PROPOSED GAS METER PER GAS COMPANY SPECIFICATIONS.
- U13 SECONDARY ELECTRIC SERVICE LINE CONNECT TO PROPOSED PAD MOUNTED TRANSFORMER. ELECTRIC UTILITY LAYOUT FOR COORDINATION PURPOSES ONLY. CONTRACTOR TO INSTALL 4-4" PVC CONDUITS FROM TRANSFORMER TO BUILDING. (SEE ELECTRICAL PLANS FOR DETAILS). CONTRACTOR SHALL COORDINATE WITH ELECTRIC COMPANY PRIOR TO ANY EXCAVATION OR INSTALLATION OF CONDUITS.
- U14 CONTRACTOR SHALL COORDINATE WITH THE ELECTRIC COMPANY PRIOR TO ANY CONSTRUCTION TO CONFIRM PRIMARY SERVICE LOCATION. CONTRACTOR SHALL HAVE INSPECTOR VERIFY CONSTRUCTION PRIOR TO CLOSING TRENCH.
- U15 TELEPHONE/CABLE SERVICE LINE. CONTRACTOR SHALL COORDINATE WITH TELEPHONE/CABLE COMPANY PRIOR TO ANY EXCAVATION OR INSTALLATION OF CONDUITS. CONTRACTOR TO INSTALL 2-4" PVC CONDUITS. MINIMUM 6 LINES REQUIRED FOR TELEPHONE AND MINIMUM 5 LINES REQUIRED FOR CABLE.
- U16 FIRE DEPARTMENT CONNECTION (FDC).
- U17 PROPOSED 1" IRRIGATION LINE STUBBED FROM DOMESTIC OUTSIDE THE BUILDING TO IRRIGATION METER AND BFP.
- U18 PROPOSED DUMPSTER DRAIN CONNECTED TO SANITARY SEWER PRIOR TO GREASE TRAP. (SEE PLUMBING PLAN FOR DETAILS AND SPECIFICATIONS.) (SEE DETAILS)
- U19 PROPOSED LIGHT POLES. SEE PHOTOMETRIC PLAN (PH.10) FOR DETAILS.
- U20 PROPOSED 6"x6" H-20 COMMERCIAL METER VAULT WITH THE 2-24" CAST IRON MANHOLE FRAMES AND COVERS HOUSING 2" WATER METER AND 6" FIRE PROTECTION SINGLE DETECTOR CHECK VALVE. DOMESTIC BACKFLOW PREVENTER TO BE INSTALLED IN BUILDING UTILITY ROOM (SEE DETAILS)
- U21 PROPOSED SANITARY CLEANOUT (SEE DETAILS)
- U22 CONTRACTOR SHALL COORDINATE WITH RESPECTIVE UTILITY COMPANY PRIOR TO CONSTRUCTION TO CONFIRM LOCATIONS AND SPECIFICATIONS FOR PROPOSED UTILITIES CONNECTIONS. CONTRACTOR TO CONTACT ENGINEER IF DIFFERENT CONNECTION LOCATION IS DESIRED BY UTILITY COMPANY.
- U23 PROPOSED FIRE HYDRANT.
- U24 PROPOSED PAD MOUNTED TRANSFORMER. CONTRACTOR SHALL COORDINATE DIRECTLY WITH ELECTRIC COMPANY PRIOR TO CONSTRUCTION TO DETERMINE FINAL LOCATION. PAD TO BE CONSTRUCTED PER ELECTRIC COMPANY SPECIFICATIONS (W=84", L=68", D=6").
- U25 PROPOSED PRIMARY ELECTRIC SERVICE CONDUIT PER ELECTRIC COMPANY SPECIFICATIONS. CONTRACTOR TO COORDINATE DIRECTLY WITH ELECTRIC COMPANY PRIOR TO CONSTRUCTION.
- U26 TEMPORARY END OF LINE BLOW OFF ASSEMBLY. (SEE DETAILS).
- U27 1" IRRIGATION METER AND BACKFLOW PREVENTOR INSTALLED ABOVE GROUND OUTSIDE THE BUILDING
- U28 PROPOSED 1-1/4" TRACPIPE-PS-II PRE-SLEEVED SUPPLY GAS LINE AROUND BUILDING TO SUPPLY FIRE PIT AREA.
- U29 APPROXIMATE LOCATION OF GAS STUB FOR SITE SERVICE CONNECTION. FINAL LOCATION AND CONNECTION TO BE VERIFIED BY GAS COMPANY.
- U30 PROPOSED SANITARY SEWER SAMPLING MANHOLE. SEE PLUMBING PLANS FOR DETAILS.
- U31 GAS FIRE PIT. SEE LANDSCAPE PLAN ENLARGEMENT SHEET L-1.1 FOR LAYOUT DETAILS. ROUTE GAS TO EACH UNIT UNDER SLAB. CONTRACTOR TO COORDINATE WORK WITH LICENSED PLUMBER/GAS FITTER PRIOR TO SLAB CONSTRUCTION.
- U32 ROUTE 3" CONDUITS UNDER SLAB TO LOCATION OF RECEPTACLE INSIDE FIRE PIT. WATER FIRE PIT INSTRUCTION MANUAL. CONTRACTOR TO COORDINATE WORK WITH LICENSED ELECTRICIAN PRIOR TO SLAB CONSTRUCTION.
- U33 PROPOSED GAS SERVICE PIPE PER GAS COMPANY SPECIFICATIONS. GAS PIPE LAYOUT FOR COORDINATION PURPOSES ONLY.

B.O. Samples taken here for Bact.



GreenbergFarrow

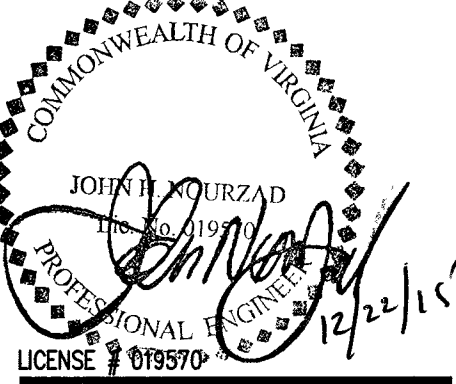
153 Cordaville Road, Suite 210
Southborough, MA 01772
t: 508 229 0032

COPYRIGHT NOTICE
This drawing is the property of the above referenced Professional and is not to be used for any purpose other than the specific project and site named herein, and cannot be reproduced in any manner without the express written permission from the Professional

ISSUE/REVISION RECORD

DATE	DESCRIPTION
06/05/15	CONCEPTUAL LAYOUT
07/01/15	CONCEPTUAL SUBMITTAL
07/14/15	COORDINATION SET
08/05/15	COUNTY RESPONSE #1
09/08/15	COUNTY RESPONSE #2
10/14/15	COUNTY RESPONSE #3
11/02/15	BD SET
12/03/15	COUNTY RESPONSE #4
12/23/15	CONSTRUCTION SET

PROFESSIONAL SEAL



PROFESSIONAL IN CHARGE

JOHN NOURZAD, P.E.
PROJECT MANAGER
ANDRE PIMENTEL
QUALITY CONTROL
STEPHEN POWERS, P.E.
DRAWN BY
RYAN SCHNEPPER E.I.T.

PROJECT NAME

**TEXAS
ROADHOUSE**

**ROANOKE
VIRGINIA**

SOUTH PEAK BLVD.



PROJECT NUMBER

20140788.0

SHEET TITLE

UTILITY PLAN

SHEET NUMBER

C5.0