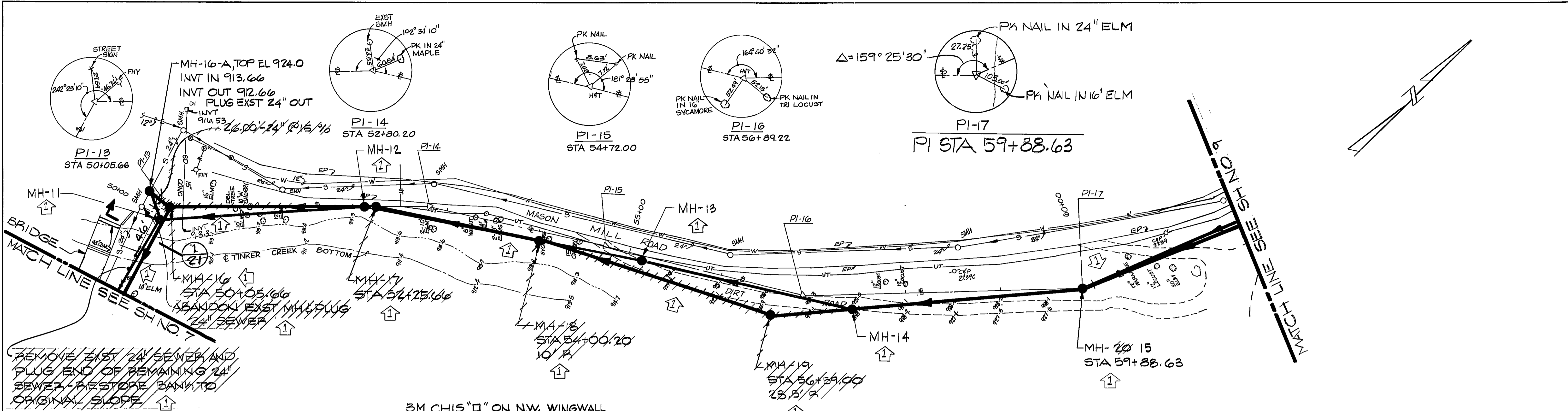


PLAN
 SURVEYED, PLOTTED, CHECKED, & NOTED BY: [Signature]
 DATE: [Blank]
 NOTE BOOK NO. [Blank]

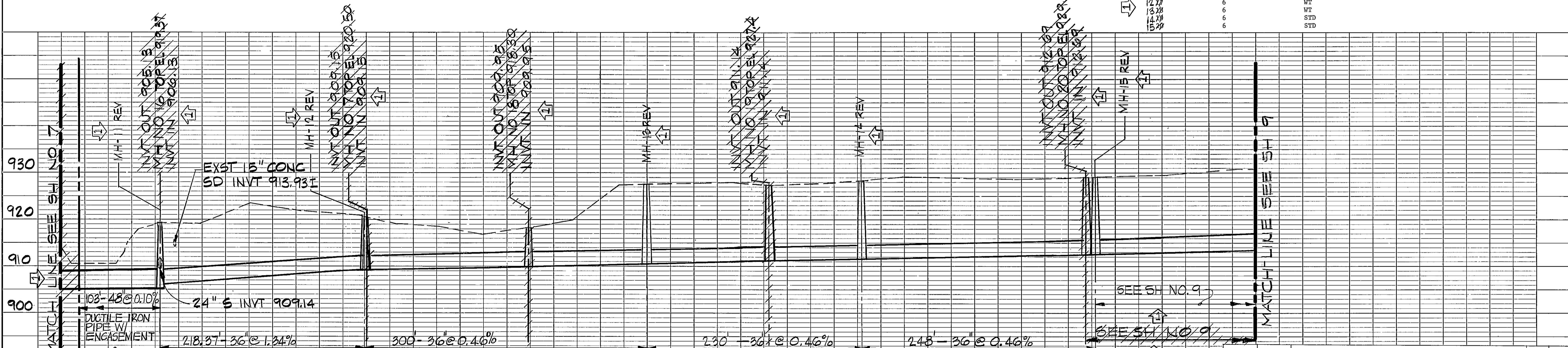
PROFILE
 SURVEYED, PLOTTED, CHECKED, & NOTED BY: [Signature]
 DATE: [Blank]
 NOTE BOOK NO. [Blank]



STA 49+00 - STA 61+70
 SCALE: 1" = 50'

BM CHIS "O" ON NW WINGWALL
 LOW WATER BRIDGE ALONG 13TH ST
 & MASON MILL ROAD OVER TINKER
 CREEK EL 922.77

MH NO.	STD DETAIL NO.	FRAME & COVER
11	28	WT
12	16A	WT
13	1	WT
14	6	WT
15	6	STD
15	6	STD



DESIGNED	SWA	TINKER CREEK SANITARY SEWER INTERCEPTOR STA 49+00 - STA 61+70 CITY OF ROANOKE, VIRGINIA		
DRAWN	MTA			
CHECKED	Dmo			
APPROVED	[Signature]			
SUBMITTED	[Signature]			
REVISION	DATE	DESCRIPTION	BY	APP
1	MAY 82	AS BUILT	DVC	SWA

AS BUILT
 MAY 1982

