

NOTE:

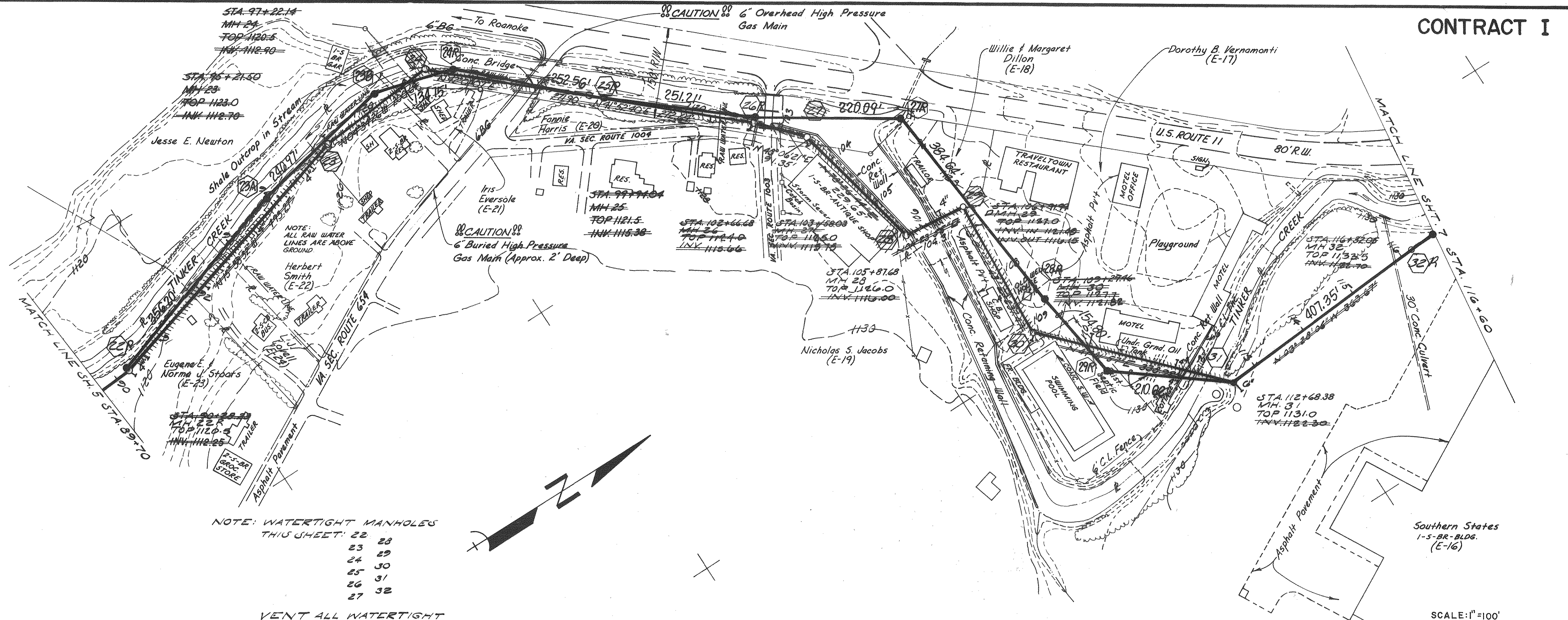
PLANS WERE PREPARED BASED ON:

AERIAL TOPOGRAPHY MAPING PREPARED BY UNIVERSAL ENGINEERING, ROCKVILLE, MARYLAND FLOWN AND MAPPED 1979, AS CONTRACTED BY THE BOTETOURT COUNTY SERVICE AUTHORITY AND SUPPLIED TO CLEAN WATER ENGINEERS, INC.

HORIZONTAL AND VERTICAL GROUND CONTROL BY CHARLES R. MCMURRAY, C.L.S., 1979, AS CONTRACTED BY THE BOTETOURT COUNTY SERVICE AUTHORITY AND SUPPLIED TO CLEAN WATER ENGINEERS, INC.

"AS-BUILT" INFORMATION WAS BASED ON EXISTING GROUND CONDITIONS AT COMPLETION OF CONSTRUCTION

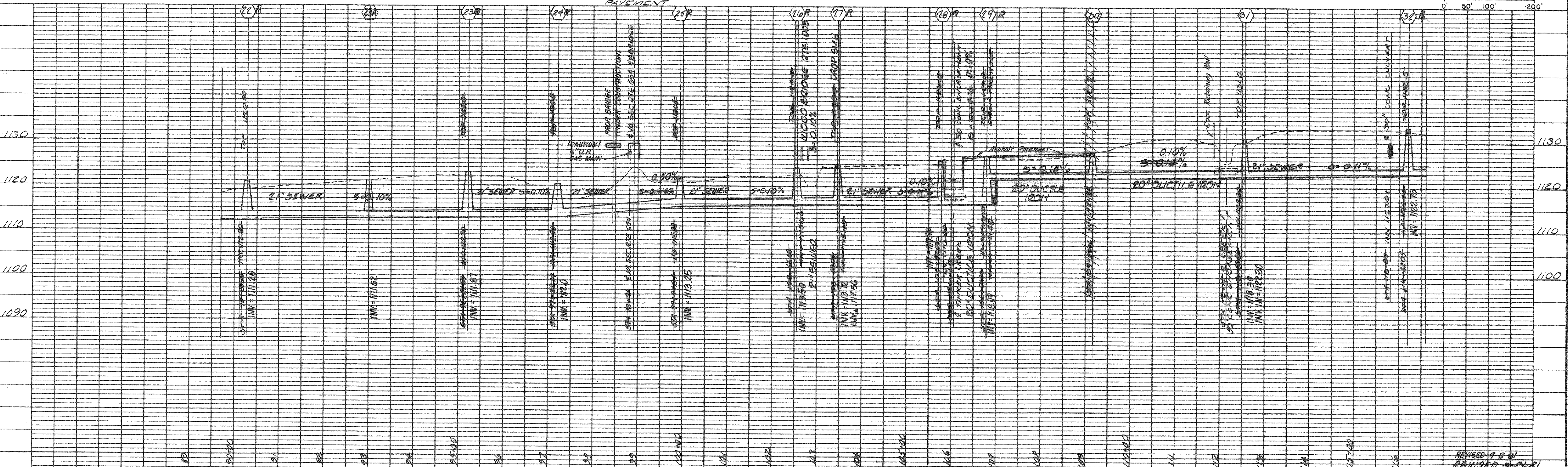
PLAN VIEWS, SEWERLINE GRADES, MANHOLE INVERTS ARE ALL CORRECT BASED ON APPROVED "CUT-SHEET" DATA AS SUPPLIED TO CLEAN WATER ENGINEERS, INC. BY THE CONTRACTOR. THE GROUND PROFILE WAS NOT ADJUSTED TO REFLECT AS-BUILT CONDITIONS THEREFORE THE PROFILES MAY NOT BE TO SCALE HORIZONTALLY OR VERTICALLY. REFER TO THE NUMERICAL NOTES FOR HORIZONTAL DISTANCE AND SEWERLINE GRADES, DO NOT SCALE.



NOTE: WATERTIGHT MANHOLES
THIS SHEET: 22 23
24 25
26 27
28 29

VENT ALL WATERTIGHT
MANHOLES NOT SET IN
PAVEMENT

SCALE: 1"=100'
0' 50' 100' 200'



Designed: DJR-LHW
Drafted: WCB-LHW
Checked: LHW
Approved: DJR

Clean Water Engineers, Inc.
Fincastle, Virginia

TINKER CREEK INTERCEPTOR
FOR
BOTETOURT COUNTY SERVICE AUTHORITY

"AS BUILTS"

Revised 9-8-81
Revised 5-2-81
Revised 2-8-80

Sheet: 6 of 18
Scale: HORIZ. 1"=100'
VERT. 1"=10'
Date: 9-28-79
Project: 7930