

NOTE:

PLANS WERE PREPARED BASED ON:

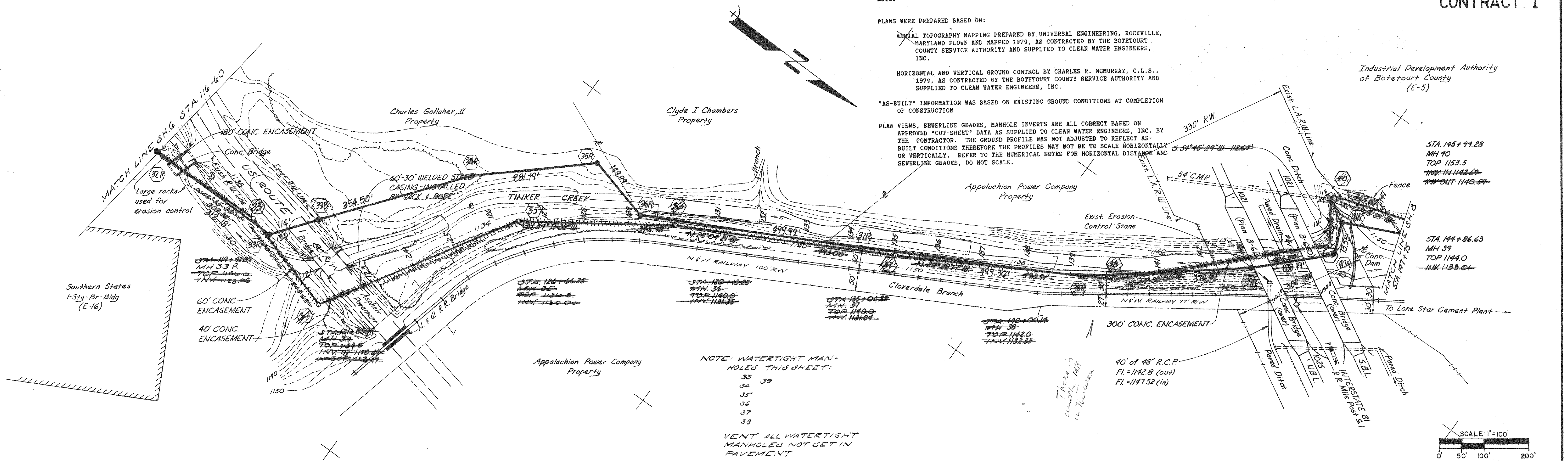
AERIAL TOPOGRAPHY MAPPING PREPARED BY UNIVERSAL ENGINEERING, ROCKVILLE, MARYLAND FLOWN AND MAPPED 1979, AS CONTRACTED BY THE BOTETOURT COUNTY SERVICE AUTHORITY AND SUPPLIED TO CLEAN WATER ENGINEERS, INC.

HORIZONTAL AND VERTICAL GROUND CONTROL BY CHARLES R. McMURRAY, C.L.S., 1979, AS CONTRACTED BY THE BOTETOURT COUNTY SERVICE AUTHORITY AND SUPPLIED TO CLEAN WATER ENGINEERS, INC.

"AS-BUILT" INFORMATION WAS BASED ON EXISTING GROUND CONDITIONS AT COMPLETION OF CONSTRUCTION

PLAN VIEWS, SEWERLINE GRADES, MANHOLE INVERTS ARE ALL CORRECT BASED ON APPROVED "CUT-SHEET" DATA AS SUPPLIED TO CLEAN WATER ENGINEERS, INC. BY THE CONTRACTOR. THE GROUND PROFILE WAS NOT ADJUSTED TO REFLECT AS-BUILT CONDITIONS THEREFORE THE PROFILES MAY NOT BE TO SCALE HORIZONTALLY OR VERTICALLY. REFER TO THE NUMERICAL NOTES FOR HORIZONTAL DISTANCE AND SEWERLINE GRADES, DO NOT SCALE.

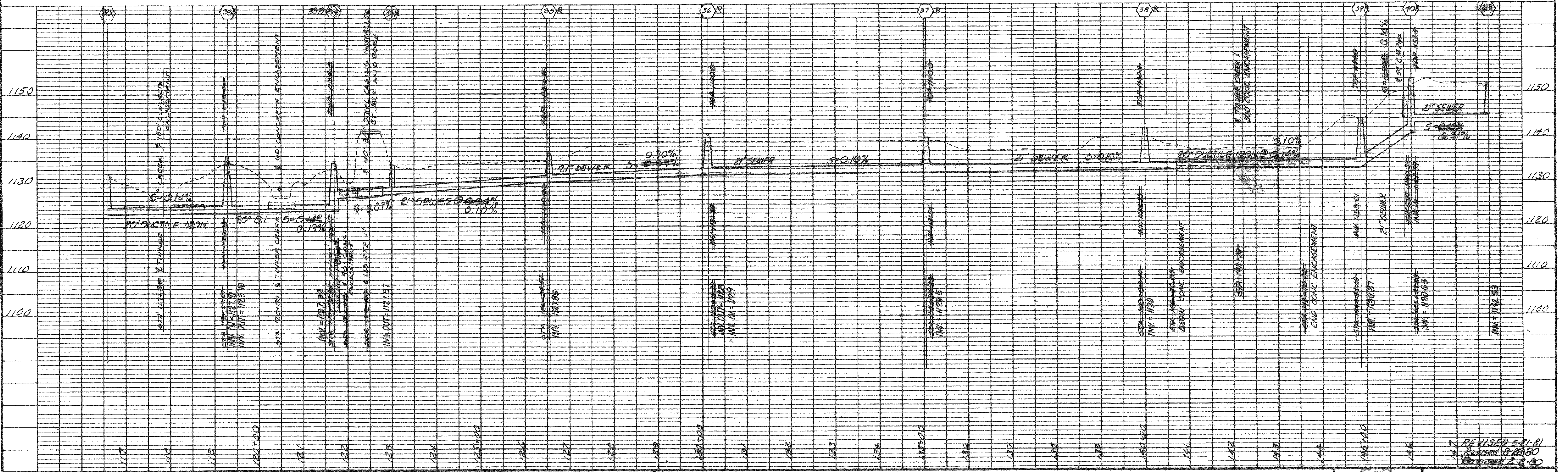
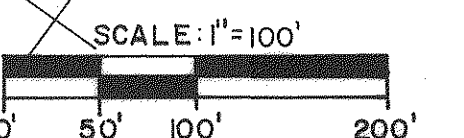
Industrial Development Authority of Botetourt County (E-5)



NOTE: WATERTIGHT MANHOLES THIS SHEET:

- 33
- 34
- 35
- 36
- 37
- 38
- 39

VENT ALL WATERTIGHT MANHOLES NOT SET IN PAVEMENT



Designed: DJR-LHW Drafted: WCB-LHW Checked: LHW Approved: DJR	<h2 style="margin: 0;">Clean Water Engineers, Inc.</h2> <p style="margin: 0;">Fincastle, Virginia</p>	<h3 style="margin: 0;">TINKER CREEK INTERCEPTOR</h3> <p style="margin: 0;">FOR</p> <h3 style="margin: 0;">BOTETOURT COUNTY SERVICE AUTHORITY</h3> <p style="margin: 0;">"AS BUILTS"</p>		Sheet: 7 of 18 Scale: HORIZ. 1"=100' VERT. 1"=10' Date: 9-28-79 Project: 7930
--	---	---	--	---