

NOTE: WATERTIGHT MANHOLES  
THIS SHEET: 98  
99  
VENT ALL WATERTIGHT  
MANHOLES NOT SET IN  
PAVEMENT.

NOTE:

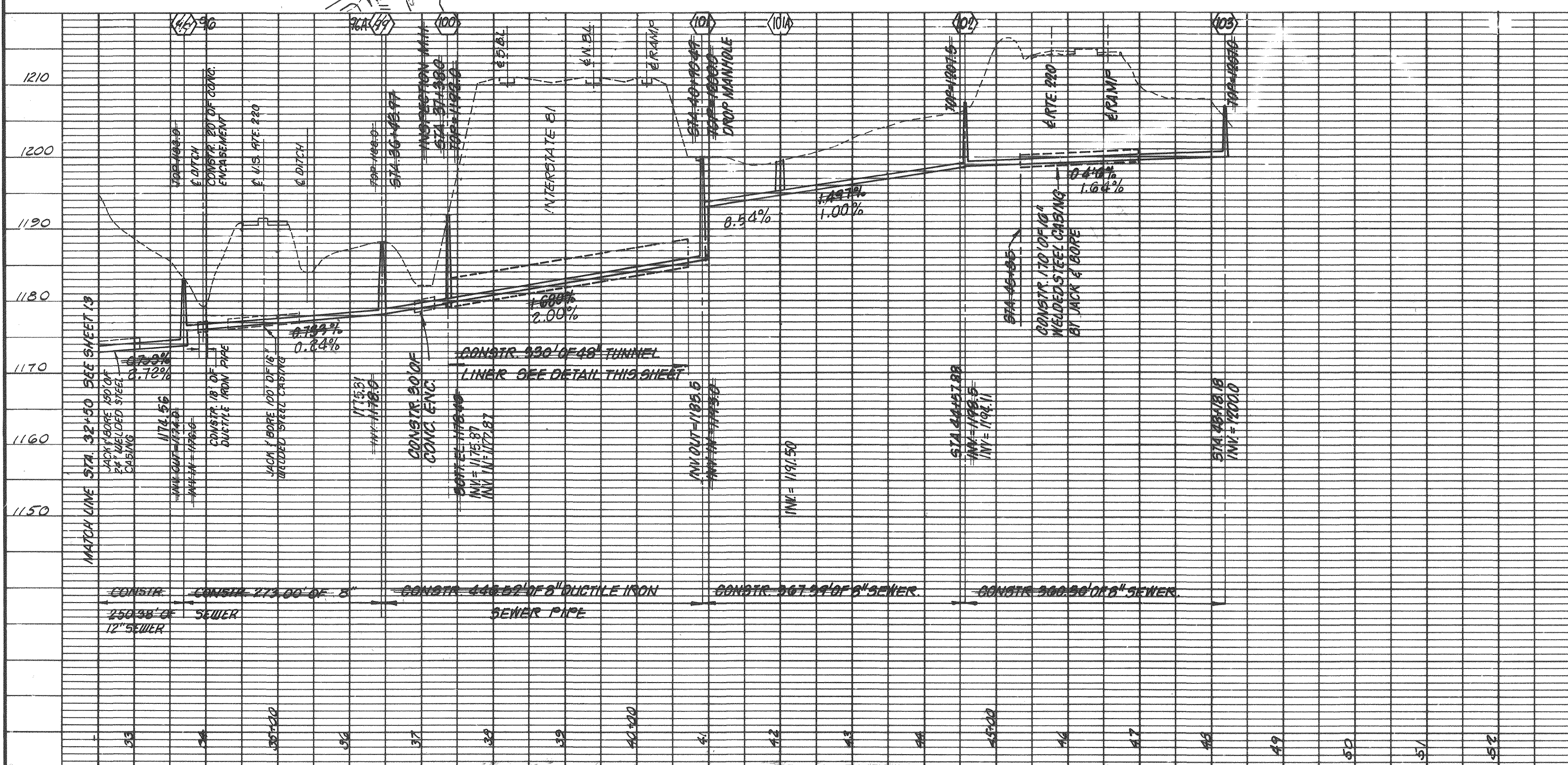
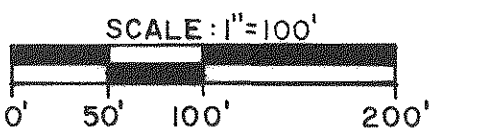
PLANS WERE PREPARED BASED ON:

AERIAL TOPOGRAPHY MAPPING PREPARED BY UNIVERSAL ENGINEERING, ROCKVILLE,  
MARYLAND FLOWN AND MAPPED 1979, AS CONTRACTED BY THE BOTETOURT  
COUNTY SERVICE AUTHORITY AND SUPPLIED TO CLEAN WATER ENGINEERS,  
INC.

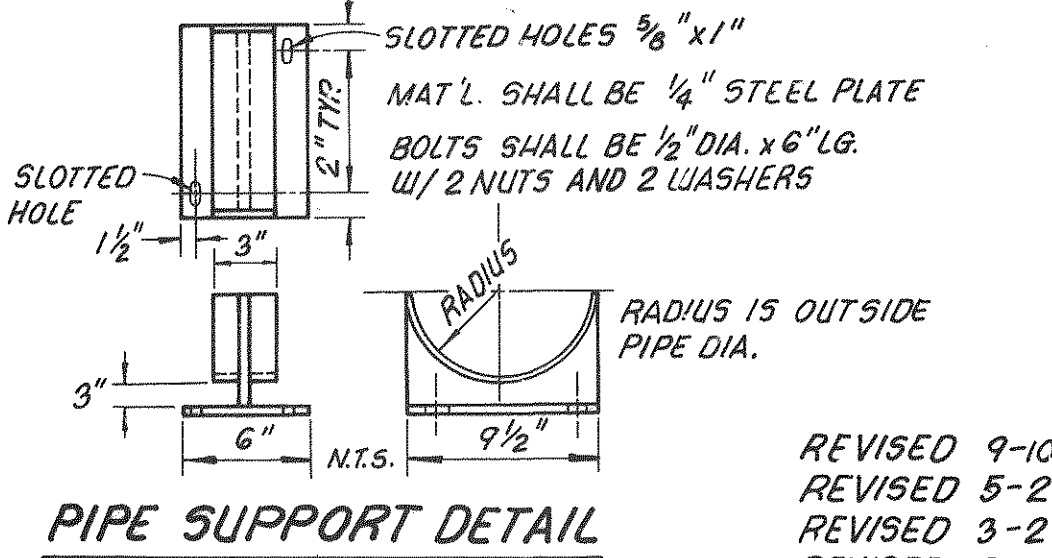
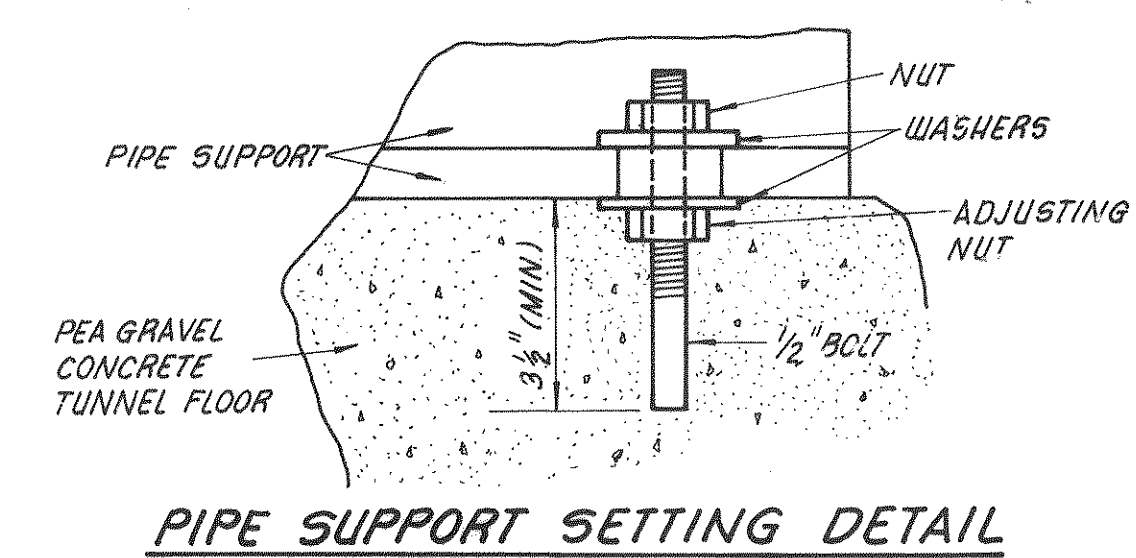
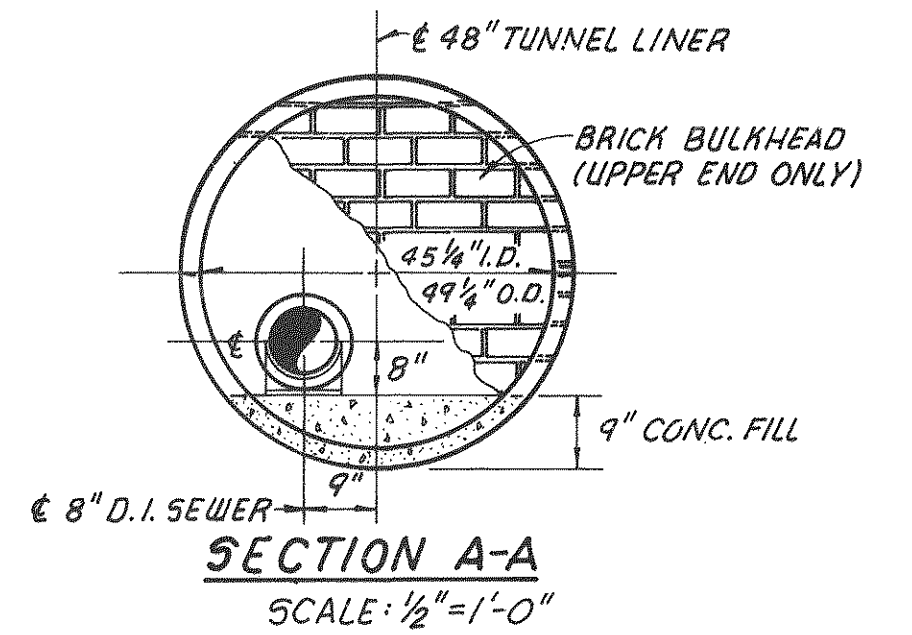
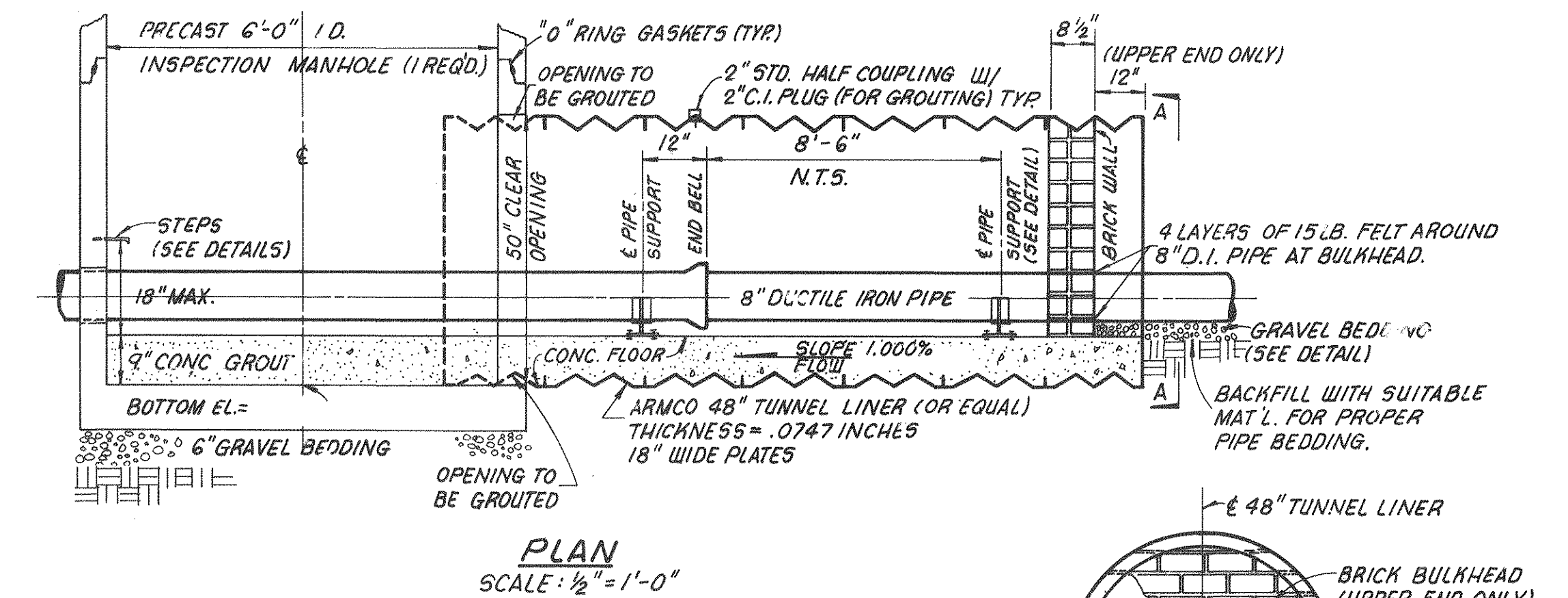
HORIZONTAL AND VERTICAL GROUND CONTROL BY CHARLES R. McMURRAY, C.L.S.,  
1979, AS CONTRACTED BY THE BOTETOURT COUNTY SERVICE AUTHORITY AND  
SUPPLIED TO CLEAN WATER ENGINEERS, INC.

\*AS-BUILT\* INFORMATION WAS BASED ON EXISTING GROUND CONDITIONS AT COMPLETION  
OF CONSTRUCTION

PLAN VIEWS, SEWERLINE GRADES, MANHOLE INVERTS ARE ALL CORRECT BASED ON  
APPROVED "CUT-SHEET" DATA AS SUPPLIED TO CLEAN WATER ENGINEERS, INC. BY  
THE CONTRACTOR. THE GROUND PROFILE WAS NOT ADJUSTED TO REFLECT AS-  
BUILT CONDITIONS THEREFORE THE PROFILES MAY NOT BE TO SCALE HORIZONTALLY  
OR VERTICALLY. REFER TO THE NUMERICAL NOTES FOR HORIZONTAL DISTANCE AND  
SEWERLINE GRADES, DO NOT SCALE.



(SEE DETAIL SHEET 17 OF 18  
FOR ECCENTRIC TAPER UNITS  
AND FRAME AND COVER.)



REVISED 9-10-81  
REVISED 5-21-81  
REVISED 3-2-81  
REVISED 2-8-81