

UTILITY NOTES:

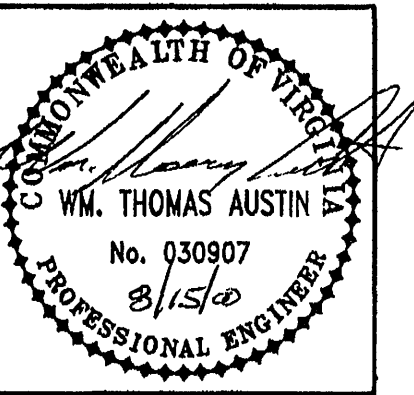
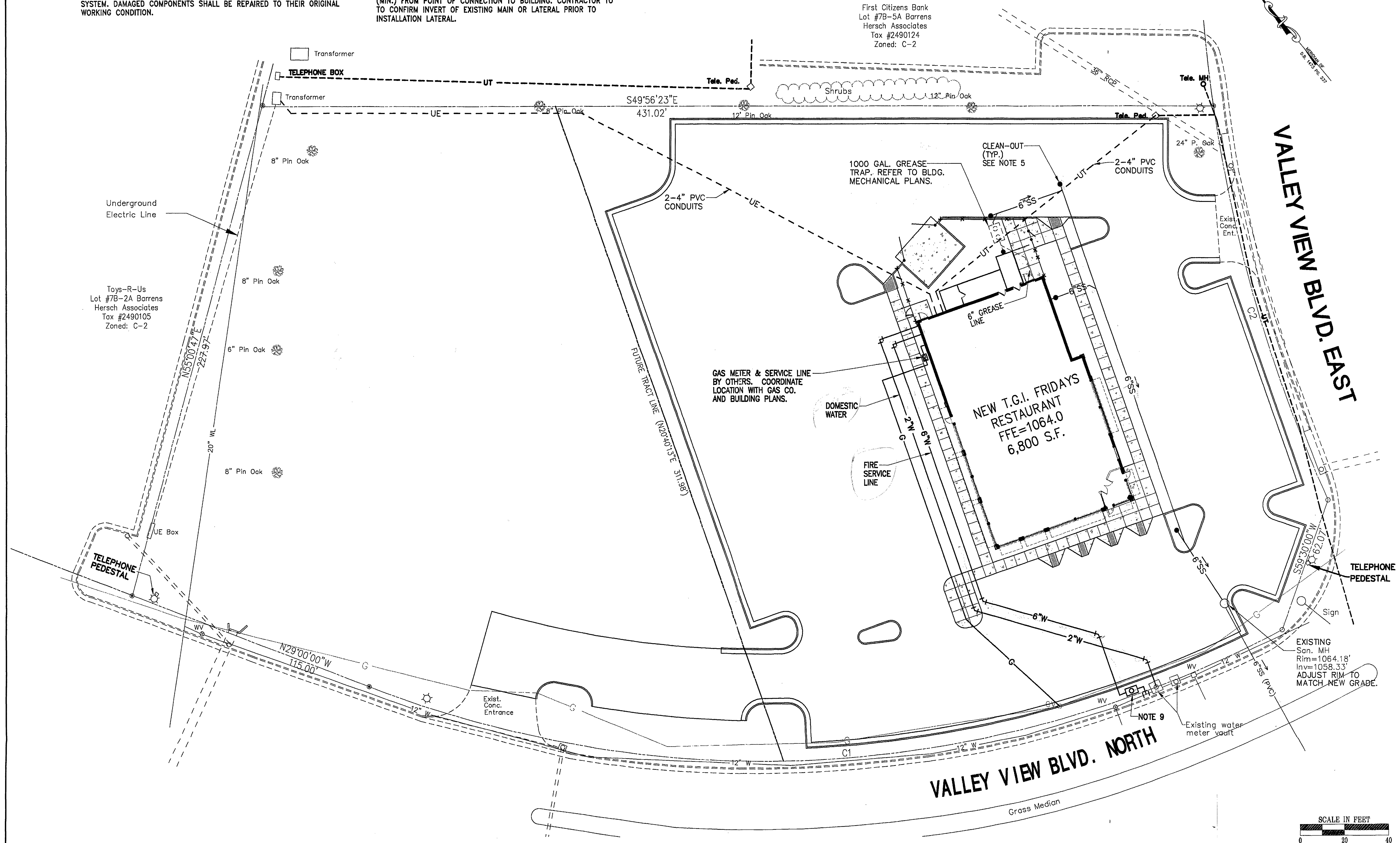
1. LOCATION OF EXISTING WATER & SEWER SERVICE STUBS ARE TAKEN FROM DESIGN DRAWINGS. CONTRACTOR TO CONFIRM LOCATION & INVERT PRIOR TO INSTALLATION OF NEW SERVICE LINES.
2. CONTRACTOR TO CONTACT THE CITY OF ROANOKE-UTILITY LINE SERVICE (853-2792) PRIOR TO EXTENDING WATER & SEWER SERVICE LINES AND TO COORDINATE THE CONNECTION TO THE EXISTING WATER METER. SITE CONTRACTOR TO EXTEND 2" WATER LINE FROM VAULT TO BUILDING.
3. EXISTING IRRIGATION LINES, VALVES, & SPRAY HEADS MAY BE LOCATED ON THIS SITE. CONTRACTOR SHALL CONSTRUCT IMPROVEMENTS IN A MANNER THAT MINIMIZES DISRUPTION AND DAMAGE TO THE IRRIGATION SYSTEM. DAMAGED COMPONENTS SHALL BE REPAIRED TO THEIR ORIGINAL WORKING CONDITION.

4. CONTRACTOR SHALL CONSULT WITH AMERICAN ELECTRIC POWER CO. TO DETERMINE SIZE AND EXACT LOCATION OF TRANSFORMER PAD.
5. CLEAN-OUTS IN PAVEMENT OR SIDEWALK SHALL BE SET IN 6" DIA. CAST IRON VALVE BOX WITH TOP SET FLUSH WITH FINISHED PAVED GRADE.
6. GAS SERVICE LINE IS SHOWN FOR GENERAL INFORMATION ONLY. EXACT LOCATION TO BE DETERMINED AND INSTALLED BY GAS SERVICE COMPANY.
7. SANITARY SEWER LATERALS SHALL BE INSTALLED @ 1/4":1' SLOPE (MIN.) FROM POINT OF CONNECTION TO BUILDING. CONTRACTOR TO TO CONFIRM INVERT OF EXISTING MAIN OR LATERAL PRIOR TO INSTALLATION LATERAL.

8. REFER TO BUILDING PLANS FOR EXACT LOCATION OF UTILITY SERVICE CONNECTIONS.
9. NEW 6" FIRE SERVICE. CITY OF ROANOKE, UTILITY LINE SERVICES TO TAP MAIN, EXTEND LINE, AND PROVIDE AND INSTALL FIRE SERVICE VAULT. SITE CONTRACTOR TO EXTEND 6" F.S.L. FROM VAULT TO BUILDING.

UTILITY LEGEND:

- GM GAS METER
- WM WATER METER
- CO SANITARY SEWER LINE/LATERAL W/CLEANOUT
- 2"W WATER LINE



Date	
Revisions	

Commission No.:	1882
Drawn By:	MRL
Designed By:	MRL
Checked By:	WTA
Date:	AUGUST 2000

Mattem & Craig
CONSULTING ENGINEERS • SURVEYORS
701 FIRST STREET, S.W.
ROANOKE, VIRGINIA 24016
(540) 345-2942
FAX (540) 345-7881

T.G.I. FRIDAYS, LOT 7B-2B VALLEY VIEW MALL
UTILITY PLAN
ROANOKE, VIRGINIA

Vertical Scale:	N/A
Horizontal Scale:	1"=20'
Issue Date:	AUGUST, 2000
Sheet No.:	C-5