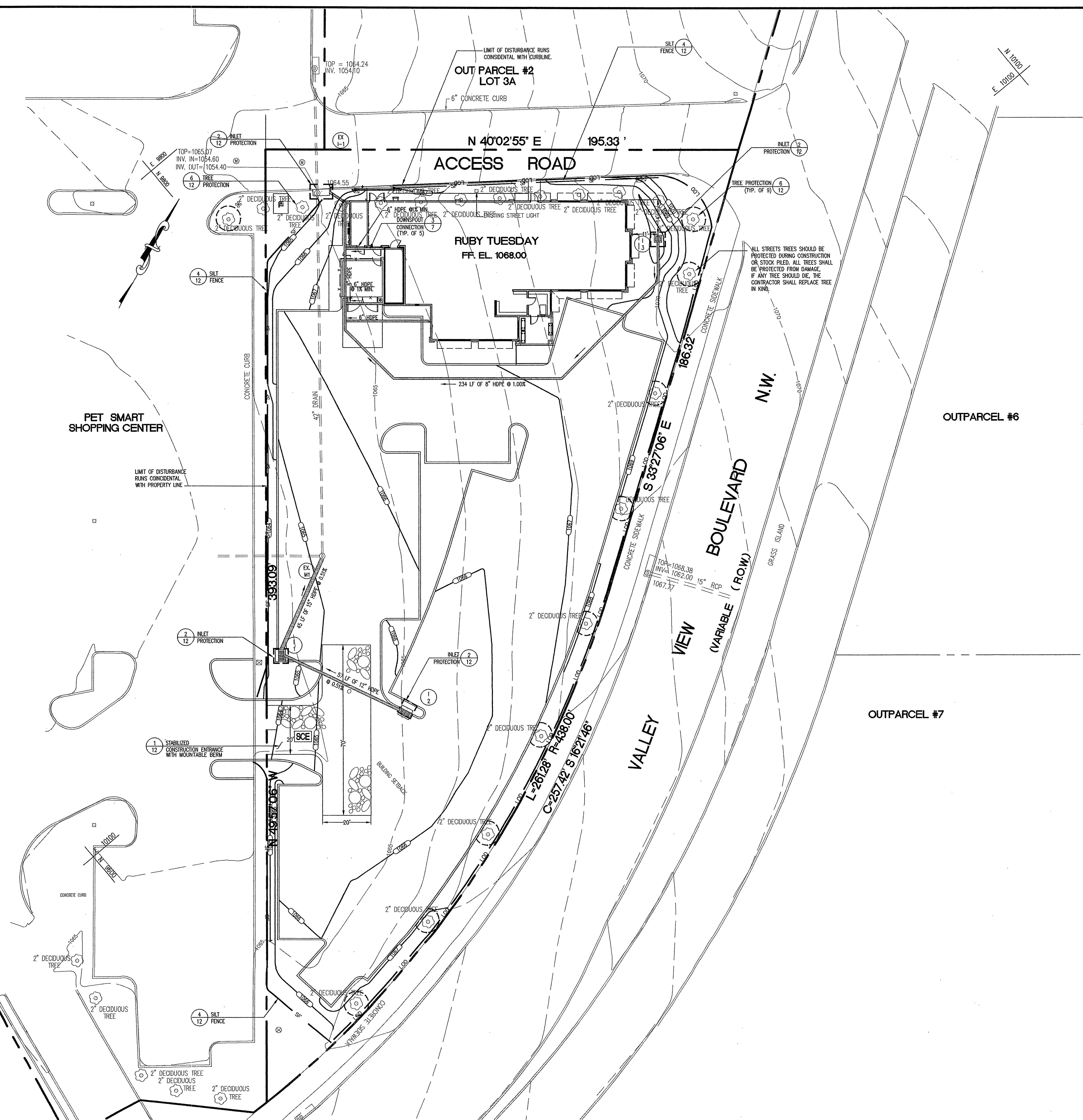


V21481\DWG\2148base.dwg Wed Oct 21 05:16:17 1998 RDMA



SEQUENCE OF CONSTRUCTION

1. Obtain all permits from City of Roanoke and state agencies.
2. Request markings of all existing utilities within the work area from Miss Utility (1-800-552-7001) to ensure all known utilities on record are adequately marked.
3. Schedule and attend a pre-construction meeting at the site to resolve all known construction issues prior to proceeding. All appropriate inspectors for City of Roanoke are to attend.
4. Install construction entrance as per plan specifications.
5. Install all silt fence as per plan locations.
6. Obtain Inspector approval of all sediment control devices prior to proceeding.
7. Carefully remove existing trees to be stockpiled and relocated after construction. Provide tree protection fence where indicated on the plans.
8. Begin rough grading operations. Maintain all perimeter sediment control devices at all times. Check all devices daily and after every significant rainfall event to ensure integrity of device.
9. Continue grading. Bring the building pad to final grade.
10. Provide temporary or permanent seeding to establish vegetation on all disturbed areas immediately upon completion of grading.
11. Begin utility and building construction upon completion of on-site rough grading operations. Construct storm drainage system as shown on the plans. Immediately provide inlet protection on all inlets once constructed. Check inlet protection daily and after every significant rainfall event to ensure integrity of the device.
12. Upon completion of all utility systems, obtain approvals from utility inspectors prior to backfilling trench, backfill and fine grade all parking areas.
13. Upon completion of all fine grading, install curb and base paving.
14. Continue building construction until all structures are completed. Install all landscaping and permanently stabilize all areas as specified.
15. Once all base pavement is installed with positive drainage to inlets and permanent vegetation is established, obtain Inspector's approval. Relocate all stockpiled trees. Replace in kind if they did not survive during construction.
16. Stabilize any remaining disturbed areas immediately.
17. Install surface course paving and striping once all heavy equipment has been removed from the site.
18. Stabilize any remaining areas and remove all sediment control devices upon approval of Inspector.

VIRGINIA GENERAL SEDIMENT CONTROL NOTES

TABLE 6-1 GENERAL EROSION AND SEDIMENT CONTROL NOTES	
ES-1:	Unless otherwise indicated, all vegetative and structural erosion and sediment control practices will be constructed and maintained according to minimum standards and specifications of the Virginia Erosion and Sediment Control Handbook and Virginia Regulations VR 625-02-00 Erosion and Sediment Control Regulations.
ES-2:	The plan approving authority must be notified one week prior to the pre-construction conference, one week prior to the commencement of land disturbing activity, and one week prior to the final inspection.
ES-3:	All erosion and sediment control measures are to be placed prior to or as the first step in clearing.
ES-4:	A copy of the approved erosion and sediment control plan shall be maintained on the site at all times.
ES-5:	Prior to commencing land disturbing activities in areas other than indicated on these plans (including, but not limited to, off-site borrow or waste areas), the contractor shall submit a supplementary erosion control plan to the owner for review and approval by the plan approving authority.
ES-6:	The contractor is responsible for installation of any additional erosion control measures necessary to prevent erosion and sedimentation as determined by the plan approving authority.
ES-7:	All disturbed areas are to drain to approved sediment control measures at all times during land disturbing activities and during site development until final stabilization is achieved.
ES-8:	During dewatering operations, water will be pumped into an approved filtering device.
ES-9:	The contractor shall inspect all erosion control measures periodically and after each runoff-producing rainfall event. Any necessary repairs or cleanup to maintain the effectiveness of the erosion control devices shall be made immediately.

LEGEND

- | | |
|----------------------------------|---------|
| Stabilized Construction Entrance | |
| Inlet Protection | |
| Silt Fence | — SF — |
| Limit of Disturbance | — LOD — |

SITE DEVELOPMENT PLANS FOR:
RUBY TUESDAY RESTAURANT
VALLEY VIEW CROSSING
PARCEL 3
MAP BOOK 1, PAGE 1822
CITY OF ROANOKE, VIRGINIA

Ruby Tuesday

PLANS PREPARED FOR:
RUBY TUESDAY, INC
12450 FAIR LAKES CIRCLE
SUITE 350
FAIRFAX, VIRGINIA 22033
(703) 222-2441

The **RBA-Group**
ARCHITECTS • PLANNERS
ENGINEERS • LANDSCAPE ARCHITECTS
Suite 205, Columbia, Maryland 21046
Phone (410) 312-0966, Fax 312-0987

REVISIONS

DATE:	10/19/98
JOB NUMBER:	M2311.00
FILE NUMBER:	2148BASE
PLOTTED:	10/15/98
DRAWN BY:	RJ

SEDIMENT AND EROSION CONTROL PLAN

SHEET C-11
11 of 14

NOT RELEASED FOR CONSTRUCTION

10/21/98

JOHN WINFRED CLAPSADLE
No. 03255
10/21/98
PROFESSIONAL ENGINEER

GRAPHIC SCALE 1"=20'