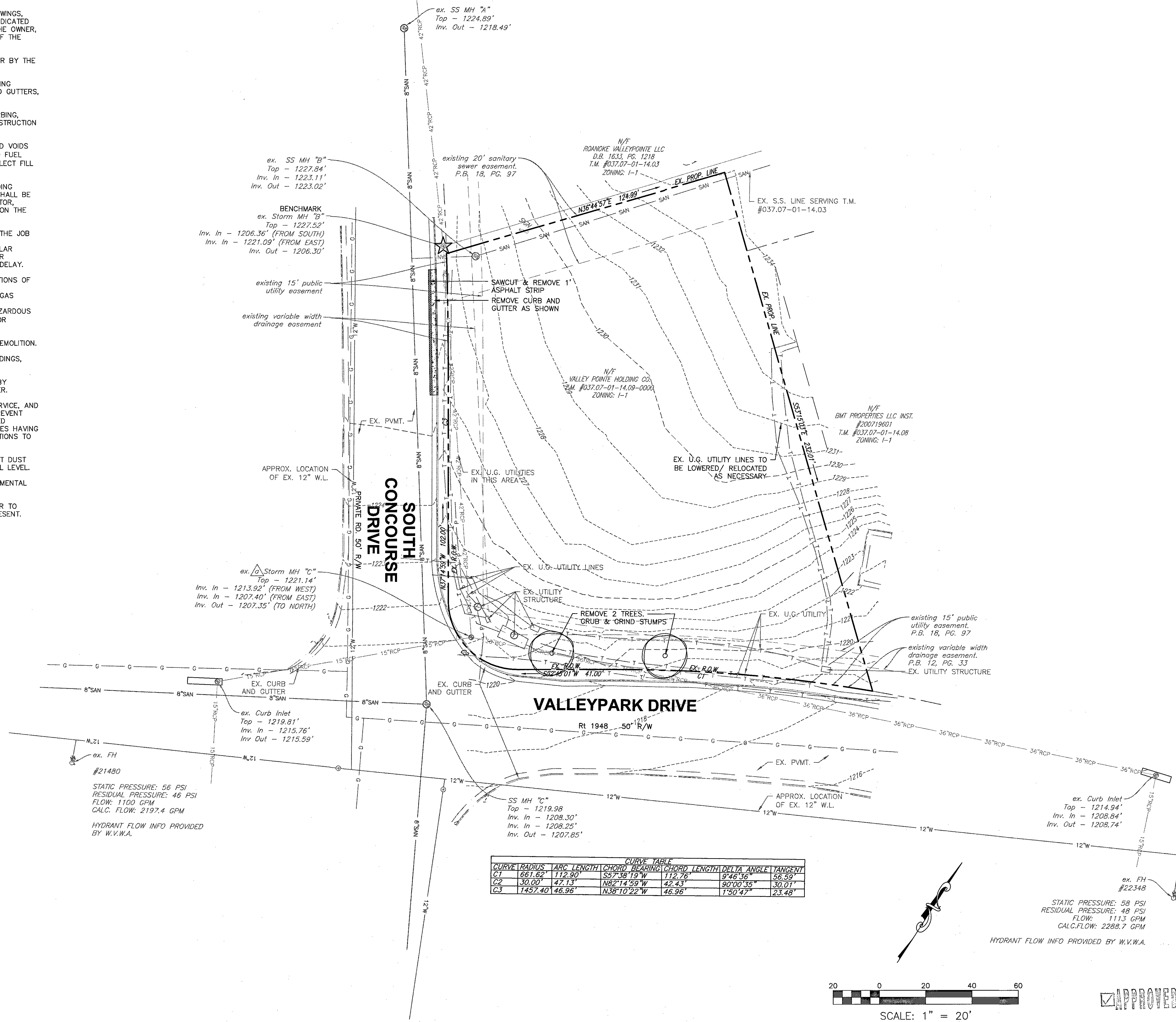


DEMOLITION NOTES

- DEMOLITION SHALL INCLUDE, UNLESS OTHERWISE NOTED ON DRAWINGS, REMOVAL OF EXISTING OBJECTS OR IMPROVEMENTS, WHETHER INDICATED ON THE DRAWINGS OR NOT, THAT WOULD IN THE OPINION OF THE OWNER, PREVENT OR INTERFERE WITH THE PROGRESS OR COMPLETION OF THE PROPOSED WORK.
- PERMITS, FEES AND LICENSES SHALL BE SECURED AND PAID FOR BY THE CONTRACTOR, INCLUDING DISPOSAL CHARGES AS REQUIRED.
- WORK SHALL COMPLY WITH THE REQUIREMENTS OF THE GOVERNING AUTHORITIES IN DEMOLITION OF EXISTING PAVEMENT, CURBS AND GUTTERS, DRAINAGE STRUCTURES AND UTILITIES AS MAY BE REQUIRED.
- CONTRACTOR SHALL SAW-CUT ALL JOINTS WHERE EXISTING CURBING, PAVEMENT AND SIDEWALK IS TO BE DEMOLISHED AND NEW CONSTRUCTION JOINS THE EXISTING.
- CONTRACTOR SHALL COMPLETELY FILL BELOW GRADE AREAS AND VOIDS FROM DEMOLITION OR REMOVAL OF STRUCTURES (UNDERGROUND FUEL STORAGE TANK, BASEMENTS, WELLS, ETC.) USING APPROVED SELECT FILL MATERIAL.
- ALL EXISTING CURBING, CONCRETE SIDEWALK, ENTRANCES, BUILDING FOUNDATIONS AND TREES AND BRUSH THAT ARE DEMOLISHED SHALL BE REMOVED FROM THE SITE AND DISPOSED OF BY THE CONTRACTOR, BUILDING DEBRIS, ETC. SHALL NOT BE USED AS FILL MATERIAL ON THE SITE.
- CONTRACTOR SHALL PROVIDE THE FOLLOWING PROTECTIONS AT THE JOB SITE: MAKE ARRANGEMENTS, BEFORE INITIATING DEMOLITION, FOR RELOCATING, DISCONNECTION, REROUTING, ABANDONING, OR SIMILAR ACTION AS MAY BE REQUIRED RELATIVE TO UTILITIES AND OTHER UNDERGROUND PIPING, TO PERMIT WORK TO PROCEED WITHOUT DELAY.
- ARRANGEMENTS SHALL BE MADE IN ACCORDANCE WITH REGULATIONS OF AUTHORITIES OF UTILITIES MENTIONED, SUCH AS OVERHEAD AND UNDERGROUND POWER AND TELEPHONE LINES AND EQUIPMENT, GAS PIPING, STORM SEWERS, SANITARY SEWERS, OR WATER PIPING. CONTRACTOR SHALL NOT USE WATER WHEN IT MAY CREATE HAZARDOUS OR OBJECTIONABLE CONDITIONS, SUCH AS ICE, FLOODING AND/OR POLLUTION.
- ENSURE SAFE PASSAGE OF PERSONS AROUND ALL AREAS OF DEMOLITION.
- CONDUCT OPERATIONS TO PREVENT DAMAGE TO ADJACENT BUILDINGS, STRUCTURES, OTHER FACILITIES, OR INJURY TO PERSONS.
- PROMPTLY REPAIR DAMAGES CAUSED TO ADJACENT FACILITIES BY DEMOLITION OPERATIONS AT NO ADDITIONAL COST TO THE OWNER.
- MAINTAIN EXISTING UTILITIES INDICATED TO REMAIN, KEEP IN SERVICE, AND PROTECT AGAINST DAMAGE DURING DEMOLITION OPERATIONS. PREVENT INTERRUPTION OF EXISTING UTILITIES SERVING OCCUPIED OR USED FACILITIES, EXCEPT WHEN AUTHORIZED IN WRITING BY AUTHORITIES HAVING JURISDICTION. PROVIDE TEMPORARY SERVICES DURING INTERRUPTIONS TO EXISTING UTILITIES AS ACCEPTABLE TO GOVERNING AUTHORITIES.
- USE WATER SPRINKLING AND OTHER SUITABLE METHODS TO LIMIT DUST AND DIRT RISING AND SCATTERING IN AIR TO LOWEST PRACTICAL LEVEL.
- COMPLY WITH GOVERNING REGULATIONS PERTAINING TO ENVIRONMENTAL PROTECTION.
- G.C. TO VERIFY THE LOCATIONS OF ALL EXISTING UTILITIES PRIOR TO CONSTRUCTION & NOTIFY THE ENGINEER OF ANY CONFLICTS PRESENT.



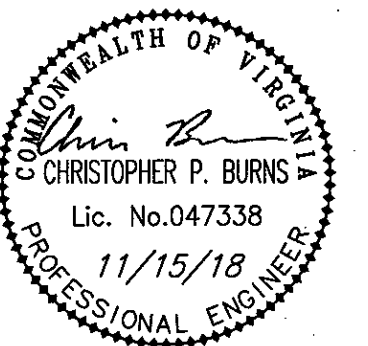
www.balzer.cc

Roanoke
 New River Valley
 Richmond
 Staunton
 Harrisonburg

RESIDENTIAL LAND DEVELOPMENT ENGINEERING
 SITE DEVELOPMENT ENGINEERING
 LAND USE PLANNING & ZONING
 LANDSCAPE ARCHITECTURE
 LAND SURVEYING
 ARCHITECTURE
 STRUCTURAL ENGINEERING
 TRANSPORTATION ENGINEERING
 ENVIRONMENTAL & SOIL SCIENCE
 WETLAND DELINEATIONS & STREAM EVALUATIONS

Balzer and Associates, Inc.

1208 Corporate Circle
 Roanoke, VA 24018
 540-772-9580
 FAX 540-772-8050



VALLEYPOINTE OFFICE BUILDING
 0 VALLEYPARK DRIVE
 EXISTING CONDITIONS & DEMO PLAN
 CATAMBA DISTRICT
 ROANOKE COUNTY, VIRGINIA

DRAWN BY CLL
 DESIGNED BY CPB
 CHECKED BY CPB
 DATE 10/3/2018
 SCALE 1"=20'

REVISIONS:
 10/29/2018
 11/15/2018

SHEET NO.

C2

JOB NO. 04180061.00