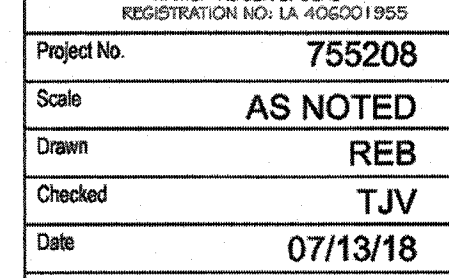
[illegible]

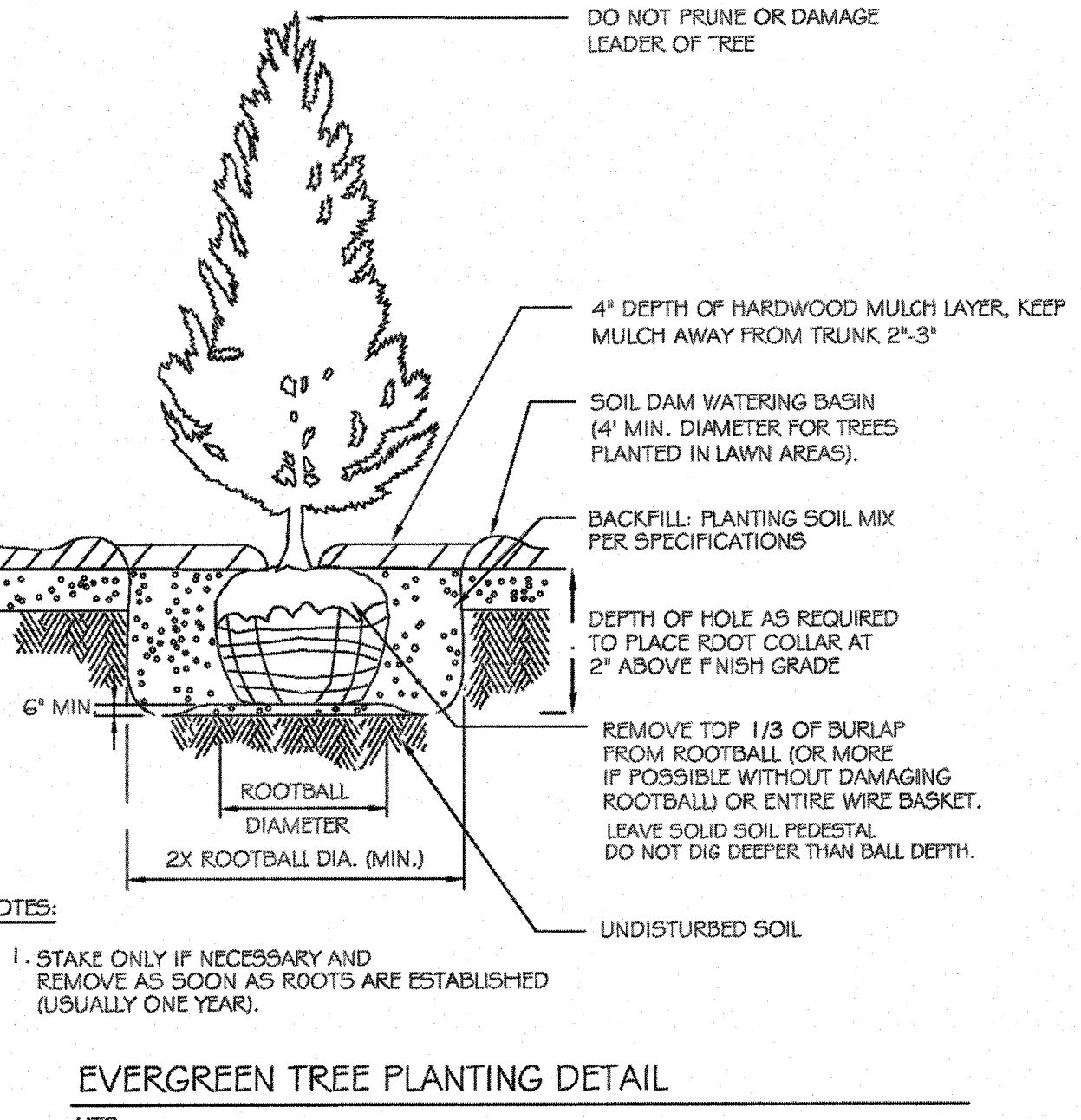
© 2018 CESCO, INC.



☒ APPROVED

CANOPY COVERAGE DATA

*NOTE: TREES WITHIN 8' OF PAVEMENT EDGE
CAN BE COUNTED FOR PAVEMENT CANOPY COVERAGE.



GENERAL LANDSCAPE REQUIREMENTS

1. ALL PLANT MATERIALS SHALL BE NURSERY GROWN AND SHALL BE PLANTED IN ACCORDANCE WITH THE LANDSCAPE SPECIFICATIONS ADOPTED JOINTLY BY THE VIRGINIA NURSERYMEN'S ASSOCIATION, THE VIRGINIA SOCIETY OF LANDSCAPE DESIGNERS AND THE VIRGINIA CHAPTER F OF THE AMERICAN SOCIETY OF LANDSCAPE ARCHITECTS.
2. DIAMETERS OF PLANT MATERIALS AS DRAWN ARE REPRESENTATIVE OF PLANTS AT OR NEAR MATURITY RATHER THAN AT INITIAL PLANTING.
3. THE PLANT LIST IS INTENDED AS A GUIDE FOR THE LANDSCAPE CONTRACTOR. IN THE EVENT OF DISCREPANCY BETWEEN THE NUMBER OF PLANTS ON THE PLANT LIST AND ON THE DRAWING, THE GREATER NUMBER SHALL APPLY.
4. LANDSCAPE CONTRACTOR SHALL COORDINATE PLANT INSTALLATION SEQUENCE WITH IRRIGATION CONTRACTOR.
5. ADJUSTMENTS IN LOCATIONS OF PLANT MATERIALS MAY BE NECESSARY DUE TO NEW OR EXISTING UTILITIES OR SITE OBSTRUCTIONS. SET NEW TREES OUTSIDE NEW OR EXISTING UTILITY EASEMENTS. ADVISE PROJECT MANAGER BEFORE THE ADJUSTMENTS ARE MADE.
6. ALL SHRUBS OCCURRING IN CONTINUOUS ROW OR FORMAL ARRANGEMENT SHALL HAVE UNIFORM HEIGHT, SPREAD AND HABIT OF GROWTH. FOR PERENNIAL LOCATIONS, FILL AREA WITH QUANTITY OF PLANTS DESIGNATED; EVENLY SPACED.
7. A MINIMUM OF 24" DEPTH OF NEW TOPSOIL SHALL BE PLACED IN ALL BED AREAS BY LANDSCAPE CONTRACTOR PRIOR TO PLANT INSTALLATION. BACKFILL ALL SHRUBS AND TREES WITH BACKFILL MIX OF ONE PART COMPOST TO THREE PARTS TOPSOIL.
8. MULCH TREES AND SHRUBS WITH MIN. 3" DEPTH OF "BLACK GOLD" OR APPROVED EQUAL, BLACK DYED SHREDDED HARDWOOD MULCH. MULCH PERENNIALS WITH 2" DEPTH OF MULCH. MULCH SHALL EXTEND IN A CONTINUOUS LAYER WITHIN PLANTING BEDS FROM FACE TO FACE OF SITE STRUCTURES - WALKS, BUILDING, CURES, OR OTHER PLANT BED LIMITS.
9. ALL BED EDGES SHALL BE SPADE-CUT AND CLOSELY ALIGN AS POSSIBLE WITH EDGES AS SHOWN ON DRAWING. KEEP MULCH A MIN. 1/2" BELOW ADJACENT PAVED SURFACES.
10. SOD ALL LAWN DISTURBED AREAS WITHIN PROJECT LIMITS AS NOTED ON CIVIL DRAWINGS; INCLUDING OUT TO PAVEMENT EDGES. REFER TO CIVIL DRAWINGS AND VERIFY EXTENT WITH PROJECT MANAGER.
11. THE LANDSCAPE CONTRACTOR SHALL GUARANTEE ALL PLANT MATERIALS FOR ONE-YEAR FROM DATE OF ACCEPTANCE. PRIOR TO END OF WARRANTY PERIOD CONTRACTOR SHALL REPLACE ALL TREES, SHRUBS OR PLANTINGS NOT ALIVE OR IN A HEALTHY GROWING CONDITION.