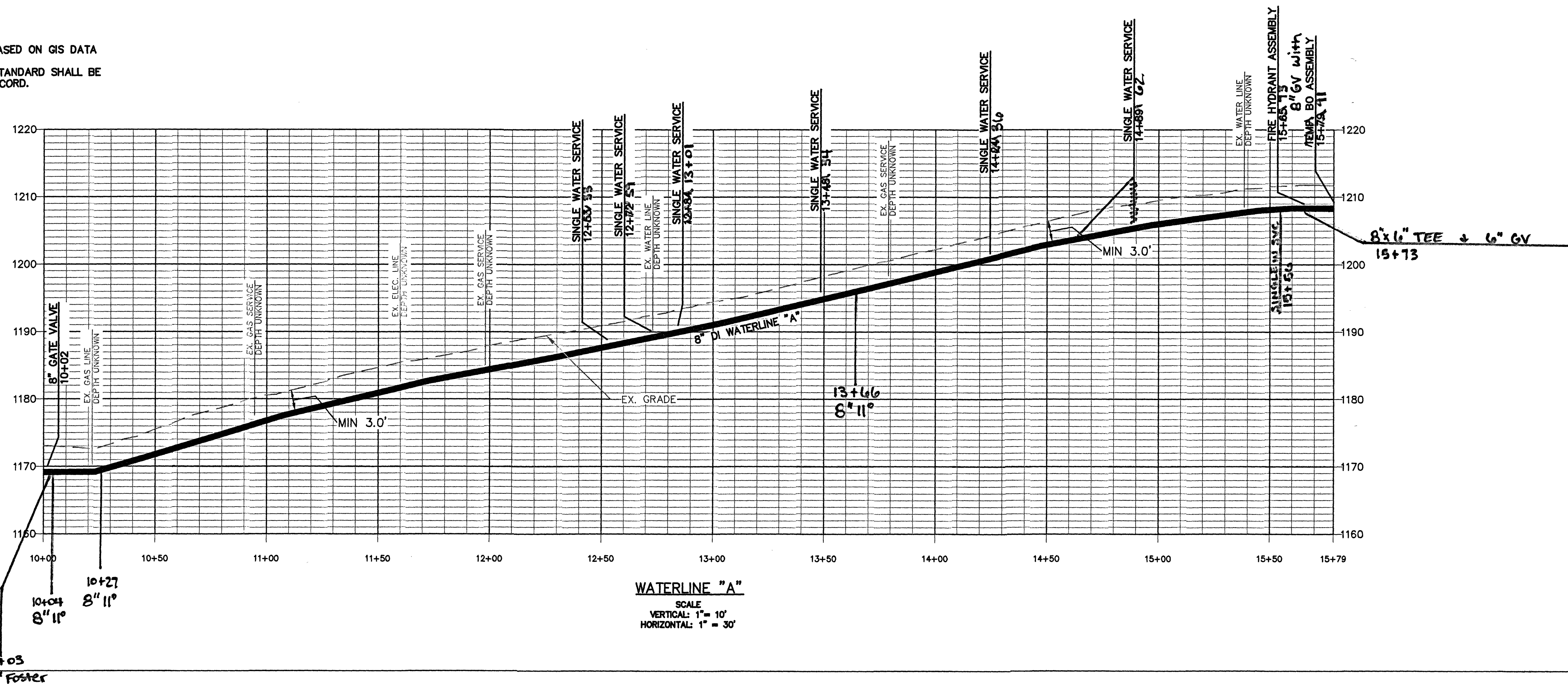


- GENERAL NOTES:**
1. PROPERTY LINES SHOWN ON THIS PAGE ARE BASED ON GIS DATA AND HAVE NOT BEEN FIELD SURVEYED.
 2. ANY FIELD CHANGES THAT AFFECT A DESIGN STANDARD SHALL BE APPROVED BY THIS PLAN SET ENGINEER OF RECORD.

- SURVEY NOTES:**
1. ALL SURVEY FOR THIS PROJECT WAS CONDUCTED USING A COMBINATION OF TOTAL STATION AND RTK GPS EQUIPMENT. THE DATUM USED FOR THE SURVEY IS NAD83. THE COORDINATE SYSTEM USED FOR THE SURVEY IS VIRGINIA STATE PLANE, SOUTH ZONE, US FOOT.
 2. CONTOUR DATA ON THIS PLAN IS GENERALLY ACCURATE TO WITHIN $\pm 0.5'$ WHERE CONTOUR DATA IS PROVIDED.
 3. THIS PLAN WAS PREPARED WITHOUT THE BENEFIT OF A CURRENT TITLE REPORT AND THEREFORE, THERE MAY EXIST ENCUMBRANCES NOT SHOWN HEREON.
 4. WITH OCCASIONAL EXCEPTION, EDGE OF PAVEMENT, GRAVEL, CONCRETE, & BRICK ARE SHOWN BASED ON GEOREFERENCED AERIAL IMAGERY AND ARE TYPICALLY ACCURATE TO WITHIN 0.5'.
 5. WITH OCCASIONAL EXCEPTION, EXISTING BUILDINGS SHOWN ARE BASED ON MUNICIPAL GIS DATA AND GEOREFERENCED AERIAL IMAGERY AND ARE TYPICALLY ACCURATE TO WITHIN 5.0'.
 6. THIS PLAN DOES NOT GUARANTEE THE EXISTENCE, LOCATION, SIZE, MATERIAL OR TYPE OF ANY UNDERGROUND UTILITIES. ALL UNDERGROUND UTILITIES & STRUCTURES SHOWN ON THIS PLAN ARE SHOWN BASED ON SURVEYED ABOVE GROUND STRUCTURES, AVAILABLE PUBLIC RECORDS AND BY UTILITY LINE LOCATION MARKINGS ESTABLISHED BY MISS UTILITY OF VIRGINIA TICKET # A307201632-00A. ALL UNDERGROUND UTILITY & STRUCTURE LOCATION SHOULD BE FIELD VERIFIED PRIOR TO THE START OF ANY CONSTRUCTION.



WESTERN VIRGINIA

WATER AUTHORITY

ENGINEERING SERVICES
601 S. JEFFERSON ST., SUITE 300
ROANOKE, VA 24011
540-853-5700

VIEW AVE WATERLINE PETITION
EXTENSION

PLAN AND PROFILE

By

Date

Description

Rev

Designed: WVWA

Drawn: NSS

Checked: AJC

Approved:

Date: JULY 2023

Project: PETITION EXT.

1

Sheet 1 of 1