

PAVING



PAVING
1000 Corporate Center
Pinebluff, VA 24155
540-772-4500
Fax: 540-772-4500

PAVING
1000 Corporate Center
Pinebluff, VA 24155
540-772-4500
Fax: 540-772-4500

PAVING
1000 Corporate Center
Pinebluff, VA 24155
540-772-4500
Fax: 540-772-4500

PAVING
1000 Corporate Center
Pinebluff, VA 24155
540-772-4500
Fax: 540-772-4500

PAVING
1000 Corporate Center
Pinebluff, VA 24155
540-772-4500
Fax: 540-772-4500

PAVING
1000 Corporate Center
Pinebluff, VA 24155
540-772-4500
Fax: 540-772-4500

PAVING
1000 Corporate Center
Pinebluff, VA 24155
540-772-4500
Fax: 540-772-4500

PAVING
1000 Corporate Center
Pinebluff, VA 24155
540-772-4500
Fax: 540-772-4500

PAVING
1000 Corporate Center
Pinebluff, VA 24155
540-772-4500
Fax: 540-772-4500

PAVING
1000 Corporate Center
Pinebluff, VA 24155
540-772-4500
Fax: 540-772-4500

PAVING
1000 Corporate Center
Pinebluff, VA 24155
540-772-4500
Fax: 540-772-4500

PAVING
1000 Corporate Center
Pinebluff, VA 24155
540-772-4500
Fax: 540-772-4500

PAVING
1000 Corporate Center
Pinebluff, VA 24155
540-772-4500
Fax: 540-772-4500

PAVING
1000 Corporate Center
Pinebluff, VA 24155
540-772-4500
Fax: 540-772-4500

PAVING
1000 Corporate Center
Pinebluff, VA 24155
540-772-4500
Fax: 540-772-4500

PAVING
1000 Corporate Center
Pinebluff, VA 24155
540-772-4500
Fax: 540-772-4500

PAVING
1000 Corporate Center
Pinebluff, VA 24155
540-772-4500
Fax: 540-772-4500

PAVING
1000 Corporate Center
Pinebluff, VA 24155
540-772-4500
Fax: 540-772-4500

PAVING
1000 Corporate Center
Pinebluff, VA 24155
540-772-4500
Fax: 540-772-4500

PAVING
1000 Corporate Center
Pinebluff, VA 24155
540-772-4500
Fax: 540-772-4500

PAVING
1000 Corporate Center
Pinebluff, VA 24155
540-772-4500
Fax: 540-772-4500

PAVING
1000 Corporate Center
Pinebluff, VA 24155
540-772-4500
Fax: 540-772-4500

PAVING
1000 Corporate Center
Pinebluff, VA 24155
540-772-4500
Fax: 540-772-4500

PAVING
1000 Corporate Center
Pinebluff, VA 24155
540-772-4500
Fax: 540-772-4500

PAVING
1000 Corporate Center
Pinebluff, VA 24155
540-772-4500
Fax: 540-772-4500

PAVING
1000 Corporate Center
Pinebluff, VA 24155
540-772-4500
Fax: 540-772-4500

PAVING
1000 Corporate Center
Pinebluff, VA 24155
540-772-4500
Fax: 540-772-4500

PAVING
1000 Corporate Center
Pinebluff, VA 24155
540-772-4500
Fax: 540-772-4500

PAVING
1000 Corporate Center
Pinebluff, VA 24155
540-772-4500
Fax: 540-772-4500

PAVING
1000 Corporate Center
Pinebluff, VA 24155
540-772-4500
Fax: 540-772-4500

PAVING
1000 Corporate Center
Pinebluff, VA 24155
540-772-4500
Fax: 540-772-4500

PAVING
1000 Corporate Center
Pinebluff, VA 24155
540-772-4500
Fax: 540-772-4500

PAVING
1000 Corporate Center
Pinebluff, VA 24155
540-772-4500
Fax: 540-772-4500

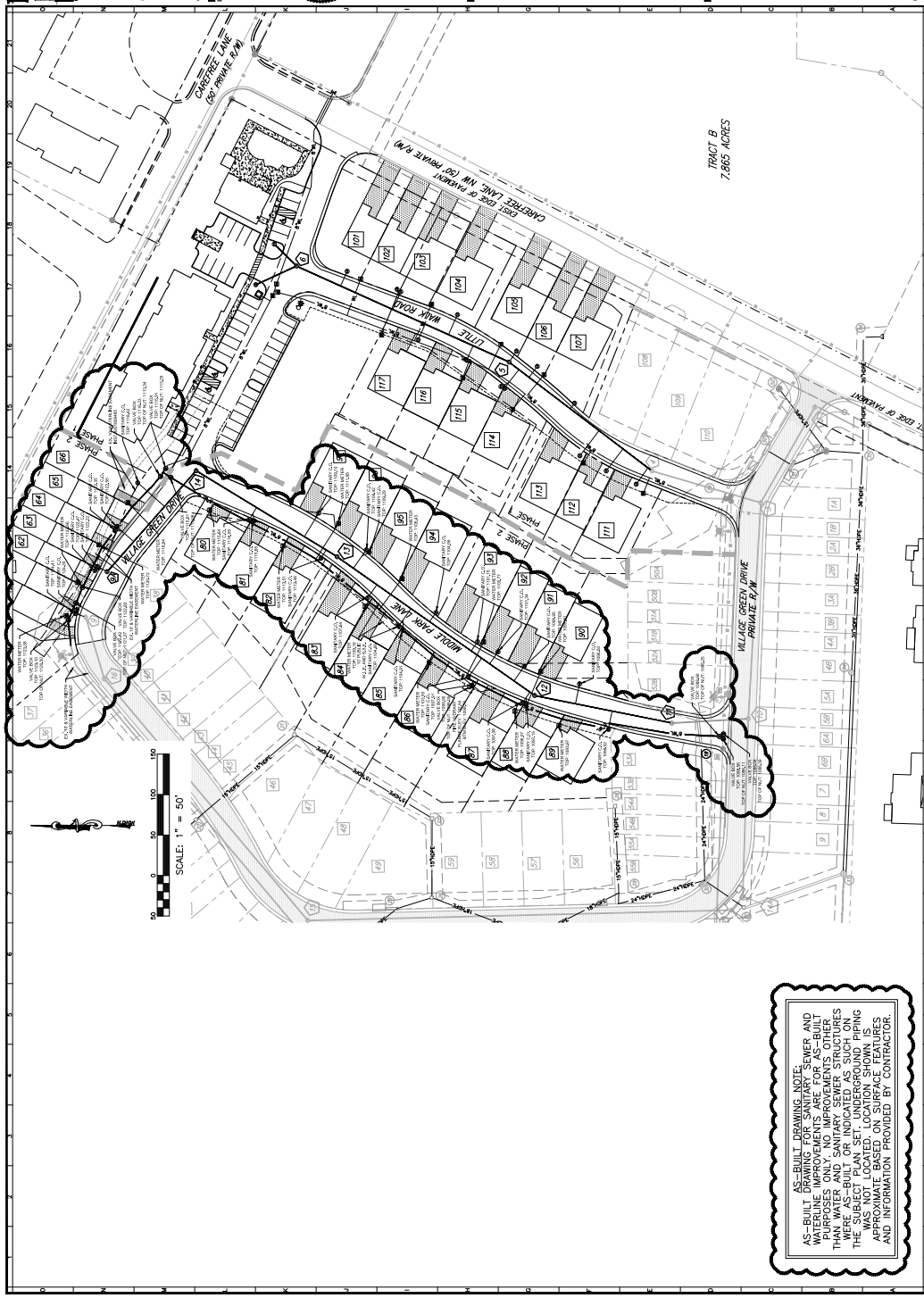
PAVING
1000 Corporate Center
Pinebluff, VA 24155
540-772-4500
Fax: 540-772-4500

PAVING
1000 Corporate Center
Pinebluff, VA 24155
540-772-4500
Fax: 540-772-4500

THE VILLAGE GREEN PHASE III
WATER & SEWER AS-BUILT PLAN
CARPENTER LANE
HOLLINS DISTRICT
ROANOKE COUNTY, VIRGINIA

DESIGNED BY: LJP
CHECKED BY: CFB
DATE: 11/02/2022
SCALE: 1" = 40'
REVISIONS:

AS-BUILT
JOB NO. 04170034.02



AS-BUILT DRAWING NOTE:
THIS DRAWING IS FOR INFORMATION PURPOSES ONLY. NO IMPROVEMENTS OTHER THAN WATER AND SEWER STRUCTURES SHOWN ARE TO BE CONSIDERED. THE SUBJECT PLAN SET, UNDERGROUND PIPING WAS NOT LOCATED. LOCATION SHOWN IS APPROXIMATE. CONTRACTOR'S FIELD AND INFORMATION PROVIDED BY CONTRACTOR.