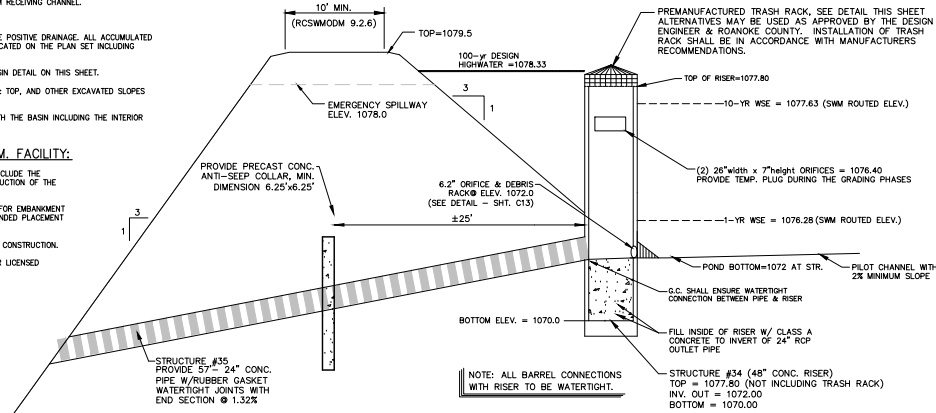


MODIFICATIONS REQUIRED FOR CONVERSION TO PERMANENT S.W.M.

1. REMOVE ANY SEDIMENT LADEN WATER WITHIN THE BASIN. A FILTER BAG OR APPROVED EQUAL SEDIMENT TRAPPING MEASURE SHALL BE USED BEFORE DISCHARGING ANY WATER TO A DOWNSTREAM RECEIVING CHANNEL.
2. REMOVE DEWATERING STRUCTURE AT THIS TIME.
3. REMOVE TEMPORARY ORIFICE PLUGS AND RESHAPE BASIN BOTTOM TO PROVIDE POSITIVE DRAINAGE. ALL ACCUMULATED SEDIMENT SHALL BE REMOVED AND FINISH GRADE SHALL BE THOSE GRADES INDICATED ON THE PLAN SET INCLUDING TOPSOIL.
4. EMERGENCY SPILLWAY SHALL BE LOWERED TO ELEVATION SHOWN ON S.W.M. BASIN DETAIL ON THIS SHEET.
5. PLACE MINIMUM OF 4" OF TOPSOIL OVER ALL OF THE EMBANKMENT SLOPES & TOP, AND OTHER EXCAVATED SLOPES ASSOCIATED WITH THE S.W.M. FACILITY.
6. SEED AND BLANKET MAT ALL REQUIRED SLOPES DISTURBED AND DENUTED WITH THE BASIN INCLUDING THE INTERIOR AND EXTERIOR SLOPES.

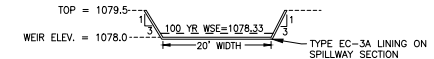
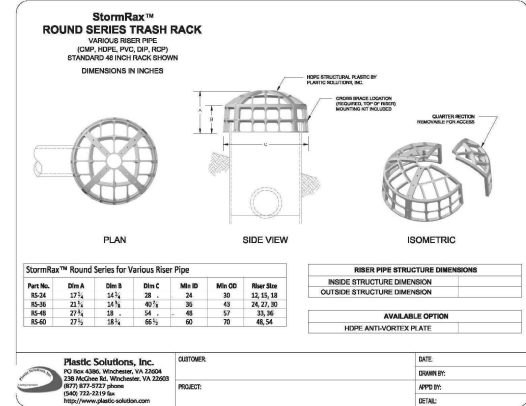
GEOTECHNICAL TESTING REQUIREMENTS FOR S.W.M. FACILITY:

1. A GEOTECHNICAL REPORT SHALL BE REQUIRED FOR THE S.W.M. FACILITY TO INCLUDE THE FOLLOWING INFORMATION AND PROVIDED TO ROANOKE COUNTY PRIOR TO CONSTRUCTION OF THE FACILITY INCLUDING THE SEDIMENT BASIN.
2. REPORT SHALL INCLUDE THE FOLLOWING RECOMMENDATIONS AND STANDARDS FOR EMBANKMENT MATERIALS INCLUDING BUT NOT LIMITED TO SUITABILITY OF MATERIALS, RECOMMENDED PLACEMENT CRITERIA (MOISTURE CONTENT, COMPACTION, ETC.).
3. THE REPORT SHALL ALSO INCLUDE DETAILS RELATED TO THE CUTOFF TRENCH CONSTRUCTION.
4. THE REPORT SHALL BE PROVIDED BY A LICENSED GEOTECHNICAL ENGINEER OR LICENSED GEOLOGIST AND THE REPORT SHALL BE SUBMITTED TO ROANOKE COUNTY.
5. THIS REQUIREMENTS SHALL COMPLY WITH RCSDM000 9.2.6.

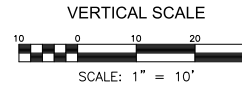


EMBANKMENT SECTION

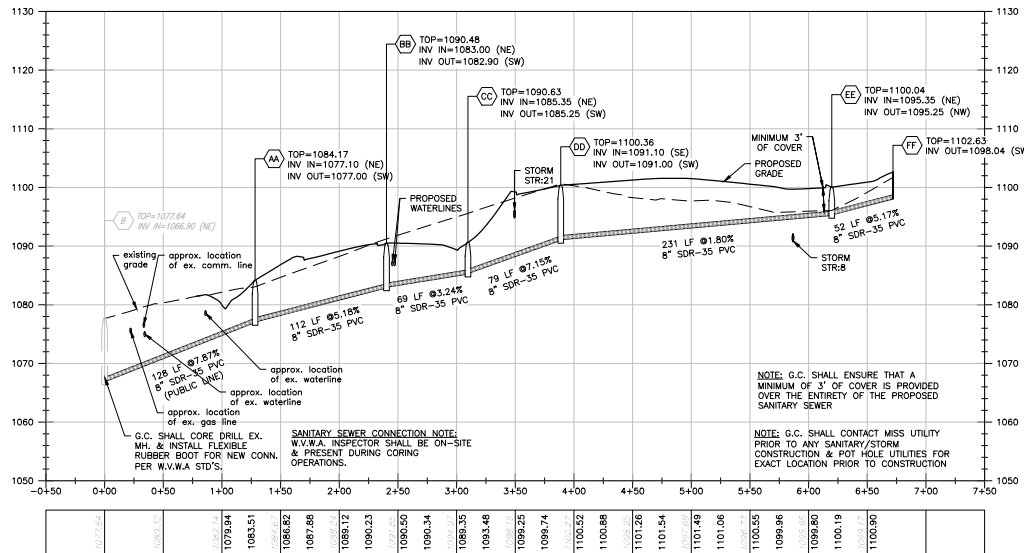
S.W.M. BASIN DETAIL



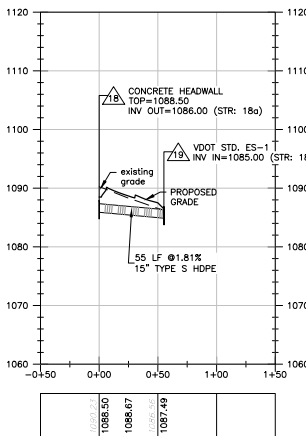
OUTLET WEIR/EMERGENCY SPILLWAY DETAIL



EX. STR:B TO STR:FF - SANITARY SEWER PROFILE



STR:18 TO STR:19 - STORM SEWER SEWER PROFILE

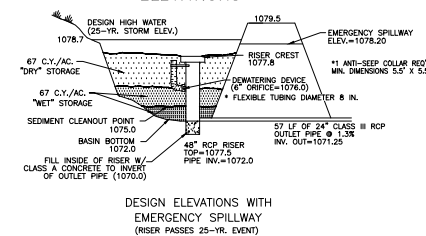


TEMPORARY SEDIMENT BASIN:

1. TOP OF DAM = 1079.50
2. DESIGN HIGH WATER = 1078.80
3. PRINCIPAL SPILLWAY CREST = 1077.80
4. DEWATERING ORIFICE INVERT = 1076.0
5. SEDIMENT CLEAOUT ELEV = 1075.0

ELEVATION	AREA (SF)	VOLUME (CF)
1072.0	0	0
1074.0	4,606	1,360
1075.5	3,918	5,353
1076.0	4,605	7,484
1078.0	7,496	19,553
1079.5	9,552	32,458

SEDIMENT BASIN SCHEMATIC ELEVATIONS



SEDIMENT BASIN



Roanoke
New River Valley
Staunton
Harrisonburg

RESIDENTIAL LAND DEVELOPMENT ENGINEERING
DEVELOPMENT ENGINEERING
LAND USE PLANNING & DESIGN
LANDSCAPE ARCHITECTURE
LAND SURVEYING
ARCHITECTURE
STRUCTURAL ENGINEERING
TRANSPORTATION ENGINEERING
ENVIRONMENTAL & JOB SCIENCE
WATER RESOURCES & CONSTRUCTION

Balzer and Associates, Inc.
1208 Corporate Circle
Roanoke, VA 24018
540-772-9580
FAX 540-772-6050



VILLAGE GREEN APARTMENTS
6191 CAREFREE LANE
PROFILES I
HOLLIS MAGISTERIAL DISTRICT
COUNTY OF ROANOKE, VIRGINIA

DRAWN BY: BTC
DESIGNED BY: BTC
CHECKED BY: CPB
DATE: 10/5/2016
SCALE: AS SHOWN
REVISIONS: 12/2/2016

SHEET NO.
C10
JOB NO. 0416011.00

APPROVED, 5/12/2020