

Sewer Lateral Schedule				
Lot No.	Main Station at Lateral Connection	Main Invert at Lateral Connection	Lateral Invert at Clean-out	Minimum Finished Floor Elevation
137	11+20	1071.05	1072.10	1074.60
138	11+62	1071.47	1072.50	1075.00
139	12+66	1072.69	1073.30	1075.80
140	13+72	1079.95	1081.00	1083.50
141	14+27	1085.24	1086.40	1088.90
142	14+68	1089.18	1090.30	1092.80
143	15+34	1095.52	1096.50	1099.00
144	15+53	1097.34	1098.60	1101.60
145	15+63	1098.80	1100.00	1103.00
146	15+63	1098.80	1100.00	1103.50
147	15+63	1098.80	1100.00	1104.00
148	15+39	1096.00	1096.90	1100.40
149	14+73	1089.66	1090.30	1092.80
150	14+32	1085.72	1086.40	1088.90
151	13+80	1080.72	1081.40	1083.90
152	13+38	1076.86	1077.60	1080.10
153	12+85	1073.00	1073.80	1076.30
155	11+86	1071.71	1072.80	1075.30

Sewer Info.

F&C : U.S. Foundry
 Pipe: 4" Sanderson SDR-26 PVC
 8" National SDR-35 PVC
 Manholes - CSZ Pre-cast concrete

Water Info.

Pipe: 3" National PVC C900 DR14
 6" National PVC C900 DR14
 Service Line: 1" Endot HDPE SDR-9
 Valves: 8" Kennedy, CCW ON, 27 turns
 6" Kennedy, CCW ON, 21 turns

FIRE HYDRANT DATA TABLE		
FIRE HYDRANT	STATIC PRESSURE	FLOW @ 20 PSI
A	82	1850
B	70	1800

NOTE:
 STATIC PRESSURE AND RESIDUAL FLOW DATA IS BASED ON FLOW TESTING OF ADJOINING FIRE HYDRANT NOS. 20526 & 20501 (WVWA) PERFORMED BY ROANOKE COUNTY FD ON 5/29/2015.

GENERAL NOTES:

- UNLESS OTHERWISE NOTED, ALL DIMENSIONS ARE TO FACE OF CURB (FC) OR EDGE OF PAVEMENT (EP).
- ALL PROPOSED STREET SIGNS AND/OR DEVELOPMENT SIGNS SHALL COMPLY WITH SECTION 30-93 OF THE ROANOKE COUNTY ZONING ORDINANCE. NO SIGN MAY BE ERECTED OR DISPLAYED WITHOUT AN APPROVED SIGN PERMIT (EXCEPT AS PROVIDED IN SECTION 30-93-3).
- ALL "STOP" AND "SPEED LIMIT" SIGNS SHALL CONFORM TO THE "ROAD AND BRIDGE SPECIFICATIONS AND STANDARDS" PUBLISHED BY VDOT.
- THE ROADWAY DIMENSIONS AND RIGHT-OF-WAY WIDTH SHOWN ON THIS PHASE OF THE DEVELOPMENT ARE CONSISTENT WITH THOSE APPROVED UNDER PHASE I OF THE DEVELOPMENT AND THE MASTER PLAN APPROVED IN 2002.

UTILITY NOTES:

- CONTRACTOR SHALL CONFIRM LOCATION & INVERT OF EXISTING AND NEW UTILITY LINES PRIOR TO INSTALLATION.
- CONTRACTOR TO CONTACT THE WESTERN VIRGINIA WATER AUTHORITY (WVWA) PRIOR TO EXTENDING WATER & SEWER SERVICE LINES AND TO COORDINATE THE CONNECTION TO THE EXISTING WATER AND SEWER MAINS.
- CLEAN-OUTS IN PAVEMENT OR SIDEWALK SHALL BE SET IN 6-INCH DIAMETER CAST IRON VALVE BOX WITH TOP SET FLUSH WITH FINISHED PAVED GRADE.
- UNLESS OTHERWISE NOTED, SANITARY SEWER LATERALS SHALL BE INSTALLED AT 1/4" / 1" SLOPE (MIN.) FROM RIGHT-OF-WAY. CONTRACTOR SHALL CONFIRM INVERT OF EXISTING MAIN OR LATERAL PRIOR TO INSTALLATION OF LATERAL.
- ALL WATER AND SEWER WORK SHALL CONFORM TO THE WESTERN VIRGINIA WATER AUTHORITY STANDARDS, LATEST EDITION.
- WHERE APPLICABLE AND WHERE SHOWN, THE AREA OF OPEN CUT SHOWN IS MINIMUM REQUIRED TO INSTALL UTILITY LINES. CONTRACTOR SHALL BE REQUIRED TO REPLACE, IN ACCORDANCE WITH APPLICABLE DETAILS, ANY PAVEMENT DAMAGED OR REMOVED BY UTILITY INSTALLATION.
- CONTRACTOR SHALL ENSURE EXISTING WATER AND SEWER SERVICES LINES WHICH RUN THROUGH AND ADJOIN THE PROJECT SITE REMAIN IN SERVICE AT ALL TIMES UNLESS A SHUTDOWN IS APPROVED BY THE WESTERN VIRGINIA WATER AUTHORITY.

PLAN KEYNOTES:

- NEW PRIVATE STREET (STREET 'L') - TO BE DEDICATED TO THE HOME OWNERS ASSOCIATION. REFER TO TYPICAL SECTION ON SHEET C-10 AND REFER TO STREET PROFILE ON SHEET C-5. STREET CENTERLINE GEOMETRY AND OTHER DIMENSIONS ARE SHOWN ON THIS SHEET.
- NEW PUBLIC STREET (STREET 'B' - OLD YORK ROAD) - TO BE DEDICATED TO ROANOKE COUNTY. REFER TO TYPICAL SECTION ON SHEET C-10 AND REFER TO STREET PROFILE ON SHEET C-5. STREET CENTERLINE GEOMETRY AND OTHER DIMENSIONS ARE SHOWN ON THIS SHEET.
- NEW WATER MAIN, SIZE AS INDICATED. APPURTENANCES (VALVE, BENDS, TEES, ETC.) ARE AS INDICATED HEREON OR AS DENOTED ON PROFILE. REFER TO SHEET C-8 FOR WATERLINE PROFILE (SHOWN WITHIN STREET PROFILE).
- NEW PUBLIC FIRE HYDRANT ASSEMBLY IN ACCORDANCE WITH WVWA STANDARDS AND SPECIFICATIONS. CONTRACTOR IS RESPONSIBLE FOR COORDINATING BURY DEPTH OF FIRE HYDRANT WITH OTHER UTILITIES. REFER TO WVWA DETAIL W-17 ON SHEET C-6 FOR ADDITIONAL INFORMATION AND REQUIREMENTS.
- NEW SINGLE OR DOUBLE RESIDENTIAL WATER SERVICE AND WATER METER (TYPICAL EACH LOT) IN ACCORDANCE WITH WVWA STANDARDS AND SPECIFICATIONS. REFER TO WVWA DETAILS W-1 AND W-4 ON SHEET C-6 FOR ADDITIONAL INFORMATION AND REQUIREMENTS.
- NEW SANITARY SEWER MAIN AND MANHOLES IN ACCORDANCE WITH WVWA STANDARDS AND SPECIFICATIONS. REFER TO SANITARY SEWER PROFILES ON SHEET C-5 (SHOWN WITHIN STREET PROFILE). REFER TO TYPICAL WVWA SEWER DETAILS ON SHEETS C-7 FOR ADDITIONAL INFORMATION AND REQUIREMENTS.
- SANITARY SEWER LATERAL (4" - UNLESS OTHERWISE NOTED) AND CLEAN-OUT (TYPICAL EACH LOT) IN ACCORDANCE WITH WVWA DETAIL S-6 SHOWN ON SHEET C-7.
- STORM DRAIN LINES AND STRUCTURES SHOWN HEREON FOR UTILITY COORDINATION INFORMATION ONLY. REFER TO SHEETS C-8 AND C-9 FOR ADDITIONAL INFORMATION REGARDING GRADING AND STORM DRAINAGE SYSTEM.
- NOT USED.
- STANDARD VDOT CG-9D ENTRANCE (12' WIDE) FOR EACH LOT - WHERE SHOWN ON PLAN. SEE DETAIL ON SHEET C-10. ALL FUTURE DRIVEWAY LANDINGS SHALL NOT EXCEED TEN PERCENT FOR A LENGTH OF 30 FEET, MEASURING FROM THE PRIVATE ROAD EDGE OF PAVEMENT.
- "NO PARKING-FIRE LANE" SIGN (CONFORMING TO SECTION D103.6 OF INTERNATIONAL FIRE CODE / VIRGINIA STATEWIDE FIRE PREVENTION CODE) TYPICAL OF 2, WHERE SHOWN - GENERALLY NOT TO EXCEED 100' ON-CENTER. REFER TO TYPICAL SECTION ON SHEET C-11 FOR ADDITIONAL REQUIREMENTS REGARDING MARKING/PAINTED FACE AND TOP OF CURB.
- TEMPORARY END OF LINE BLOW-OFF VALVE. REFER TO DETAIL W-11 SHOWN ON SHEET C-7.
- NOT USED.
- NEW 12 TO 10-FOOT WIDE GRAVEL DRIVEWAY FROM END OF STREET 'B' TO EXISTING DRIVEWAY SERVING TAX PARCEL NO.: 027.20-01-27.00-0000 / 6103 PLANTATION CIRCLE / PROPERTY OF WILLIAM P. VINIARD, JR. CONSTRUCT NEW / RE-ALIGN EXISTING DRIVEWAY FROM PLANTATION CIRCLE TO FLORA FARM ROAD. INSTALL NEW KEY-PAD ACTIVATED ENTRY GATE AT DRIVEWAY. REMOVE REMNANTS OF EXISTING DRIVEWAY THROUGH NEW LOTS 133 TO 136. REMAINING DRIVEWAY AND INGRESS/EGRESS EASEMENT TO REMAIN UNTIL OLD YORK ROAD IS EXTENDED.
- FUTURE DEVELOPMENT AREAS SHOWN FOR GENERAL INFORMATION ONLY. SEE SHEET C-3 FOR PHASING INFORMATION.

PROPOSED LOT FRONTAGES	
LOT NO.	FRONTAGE SHOWN
137	53'
138	53'
139*	164'
140	48'
141	45'
142	50'
143*	43'
144*	30'
145*	30'
146*	30'
147*	30'
148*	52'
149	49'
150	46'
151	45'
152	45'
153*	80'

* CUL-DE-SAC LOT

- NOTES:
- ALL FRONTAGES TO BE VERIFIED UPON SUBMISSION OF SUBDIVISION PLAT.
 - REFER TO GENERAL NOTE B.C. ON SHEET C-2 FOR MINIMUM FRONTAGE REQUIREMENTS.

BENCHMARK TABLE		
	①	②
NORTHING (1)	3649192.515	3648991.439
EASTING (1)	11064885.026	11064823.583
ELEVATION (2)	1079.88	1093.62
DESCRIPTION	PI/PK IN STUMP	PI/IRC

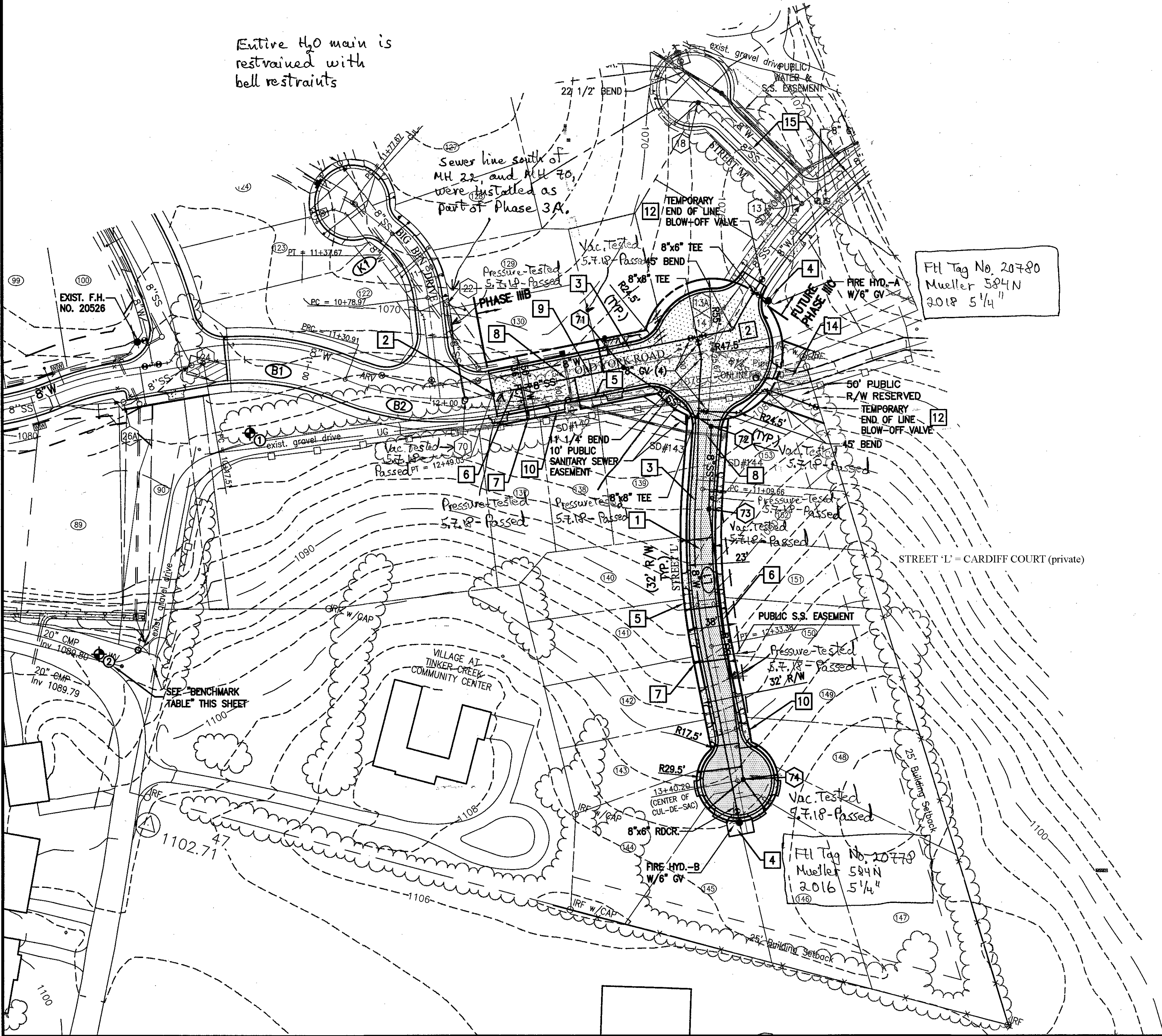
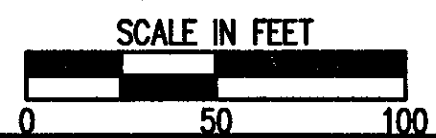
- (1) VIRGINIA STATE PLANE COORDINATE SYSTEM - FROM PLAT INST. #201000283
 (2) NGVD88

ROADWAY/STREET HORIZONTAL CURVE DATA TABLE					
CURVE #	RADIUS	TANGENT	DELTA	DEGREE OF CURVE	LENGTH
B1	200'	58.27'	32.4868	28.6479	113.40'
B2	200'	60.84'	33.8389	28.6479	118.12'
L1	466'	62.23'	15.2118	12.3000	123.72'

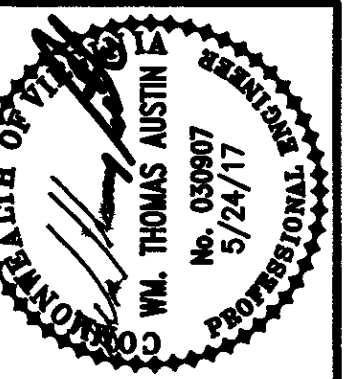
SHEET LEGEND

- LOT NUMBER
- SANITARY SEWER MANHOLE NUMBER
- WATER METER - SINGLE RESIDENTIAL WATER SERVICE REFER TO DETAIL W-1 ON SHEET C-8
- WATER METER - DOUBLE RESIDENTIAL WATER SERVICE REFER TO DETAIL W-4 ON SHEET C-8
- SANITARY SEWER LATERAL REFER TO DETAIL S-6 ON SHEET C-7
- PUBLIC STREET REFER TO SHEET C-11 FOR TYPICAL SECTION
- PRIVATE STREET REFER TO SHEET C-11 FOR TYPICAL SECTION

APPROVED



As-Built 10.23.18 K. Winslow



Revisions	Date	Issue	By	Check	Comments
0	10/06/17	RESPONSE TO 1ST REVIEW			

Issue Date: MAY 24, 2017
 Drawn By: ARB
 Designed By: ARB
 Checked By: WTA
 Date: 5/24/17

Mattern & Craig
 ENGINEERS & SURVEYORS
 701 FIRST STREET, S.W.
 ROANOKE, VA 24004
 PHONE (540) 345-9346
 FAX (540) 345-7681

THE VILLAGE AT TINKER CREEK - PHASE IIB
 LAYOUT WATER & SANITARY SEWER
 PLAN
 ROANOKE COUNTY, VIRGINIA

Vertical Scale: N/A
 Horizontal Scale: 1" = 50'
 Commission Number: 1966-P4
 Sheet No.:

C-4