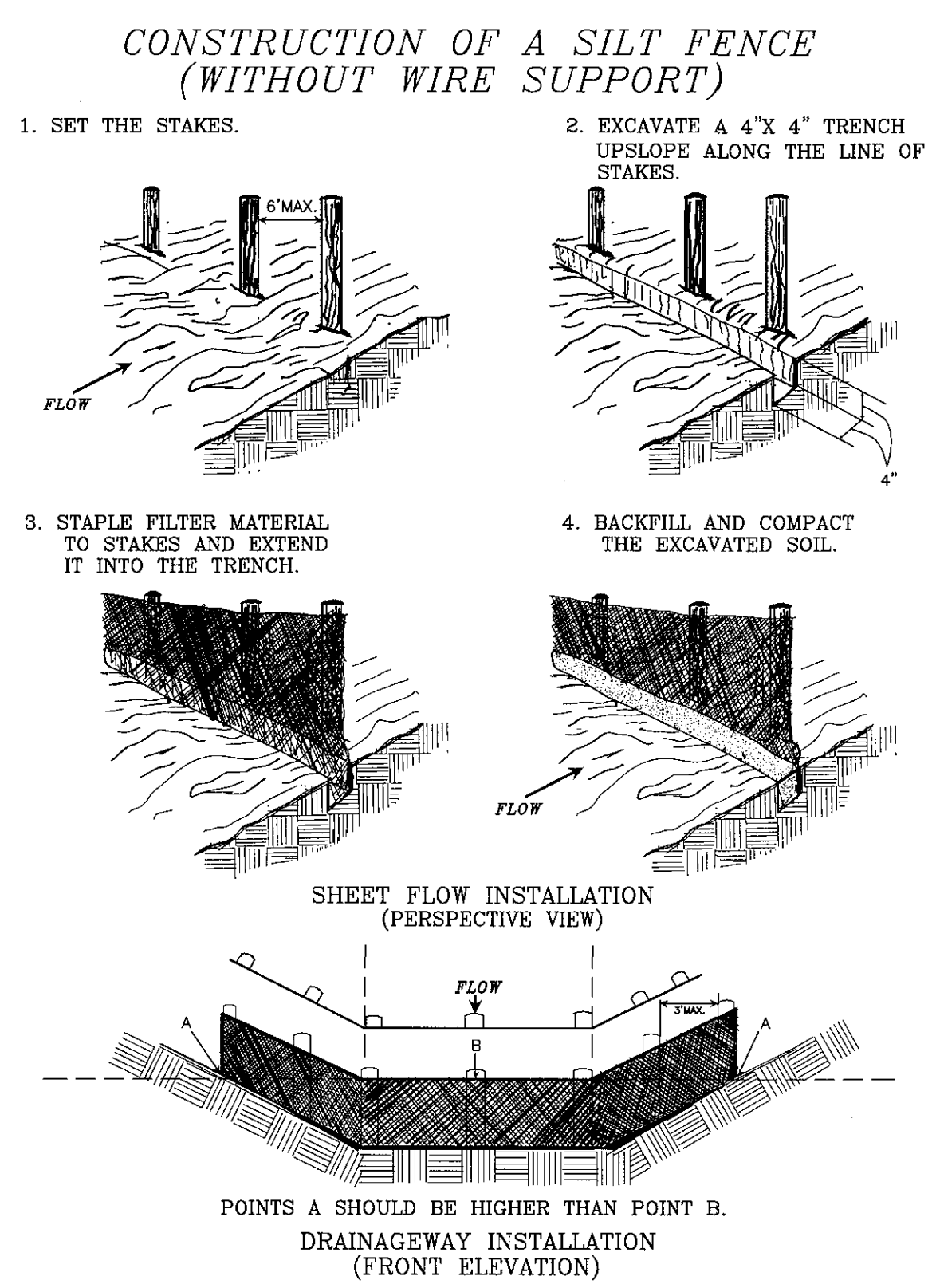
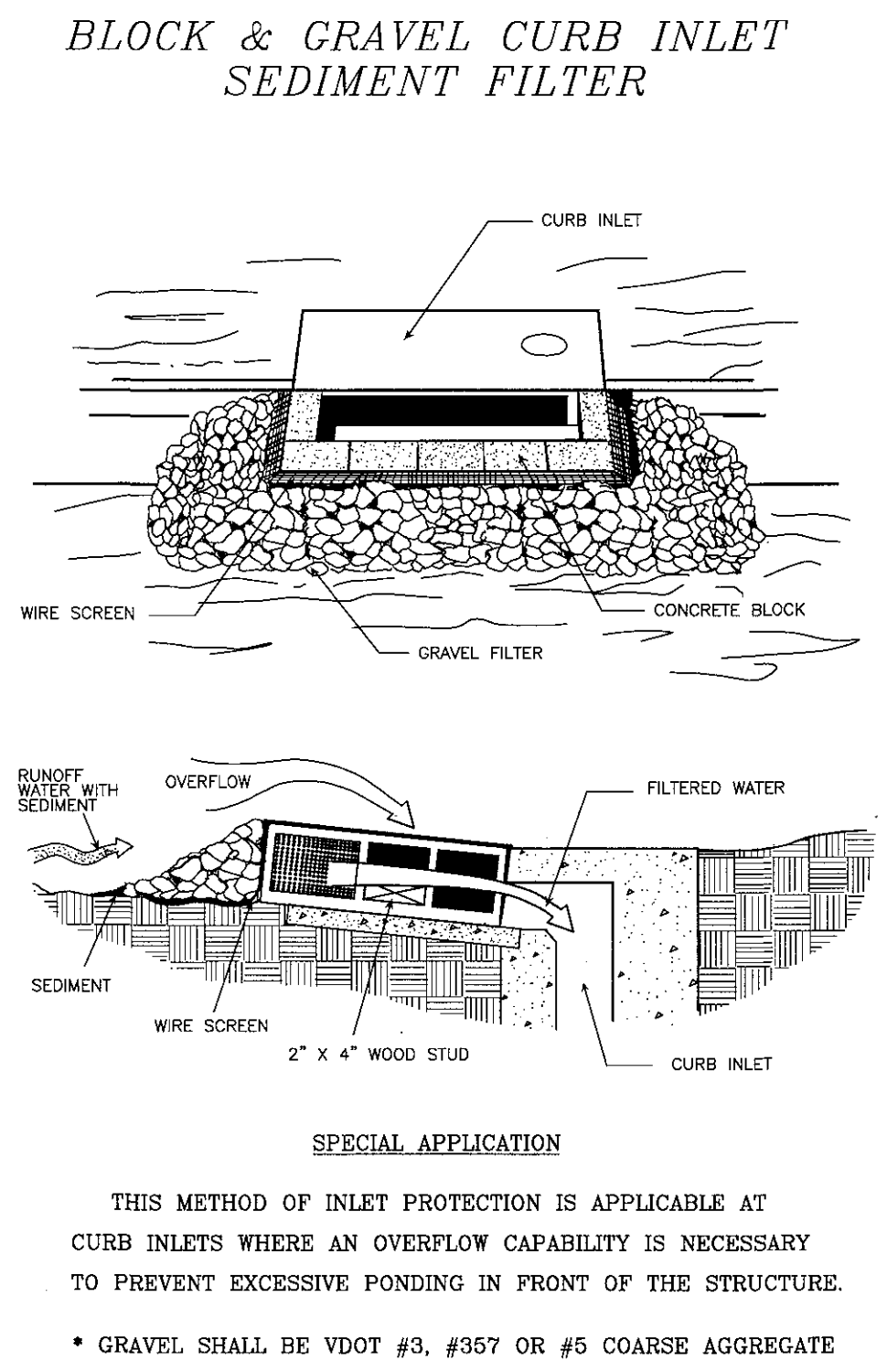


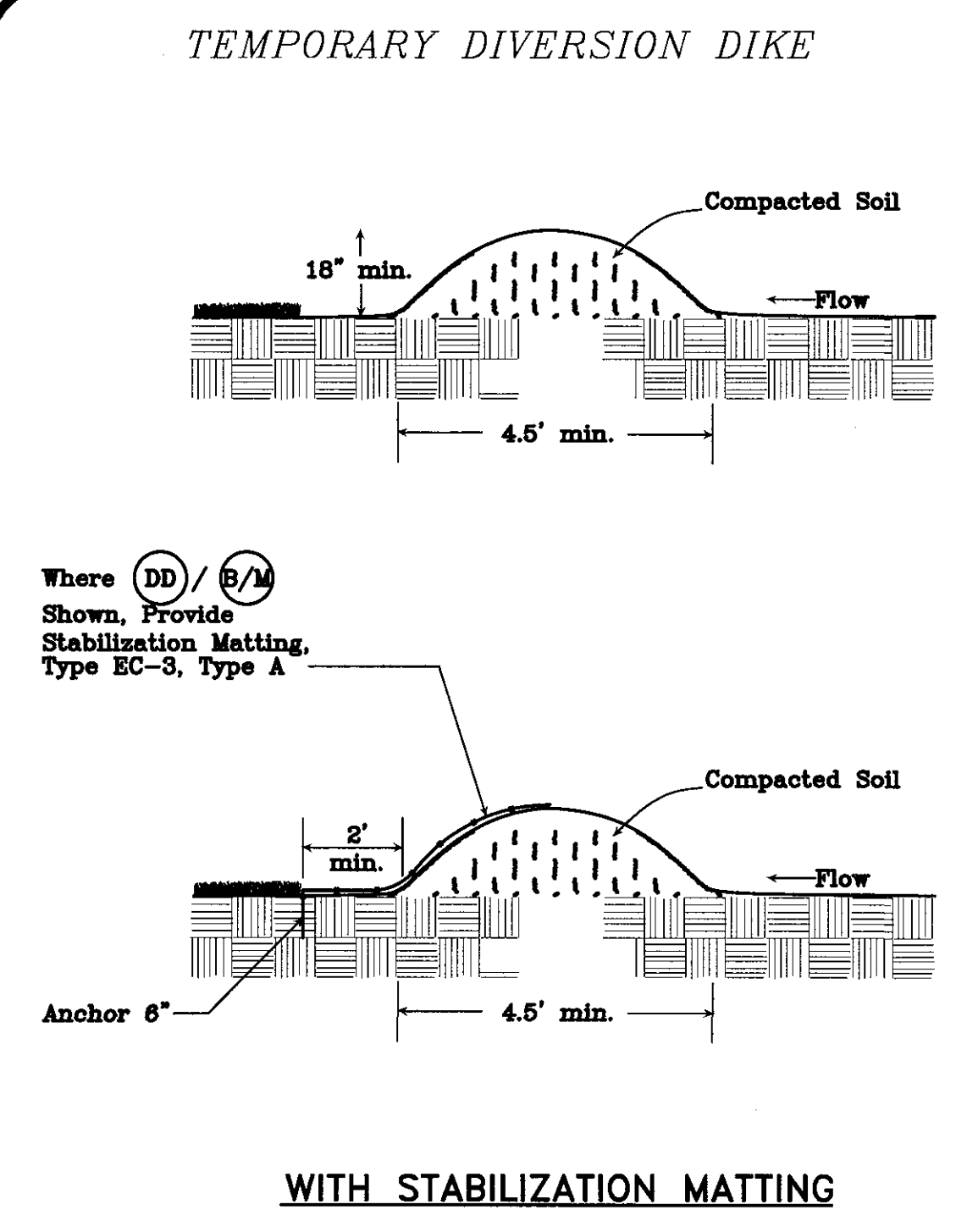
STONE CONSTRUCTION ENTRANCE (CE)
(STD. & SPEC. 3.02)



SILT FENCE (SF)
(STD. & SPEC. 3.05)



STORM DRAIN INLET PROTECTION (IP)
(STD. & SPEC. 3.07)



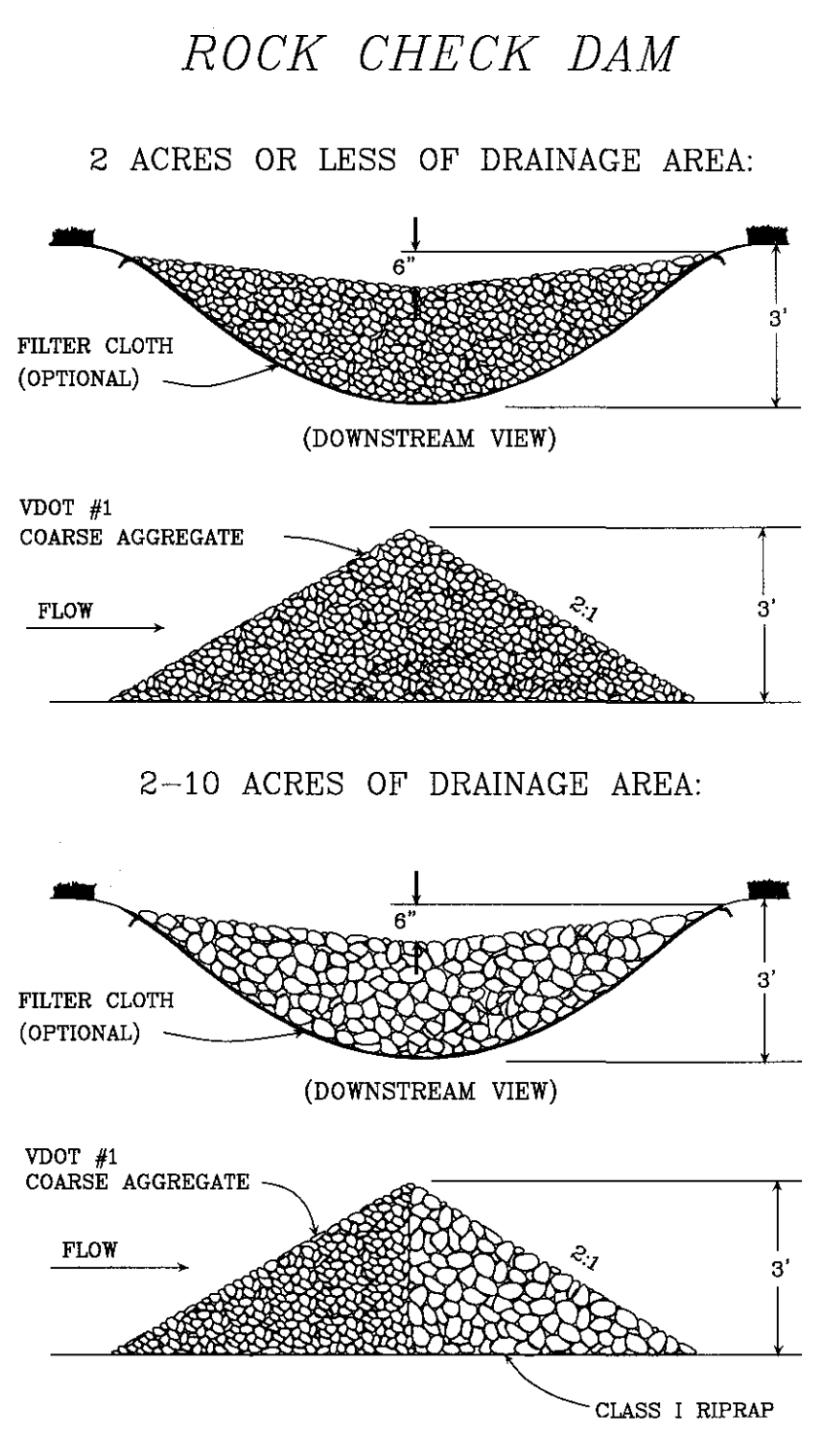
TEMPORARY DIVERSION DIKE (DD)
(STD. & SPEC. 3.09)

TABLE 3.35-A
ORGANIC MULCH MATERIALS AND APPLICATION RATES

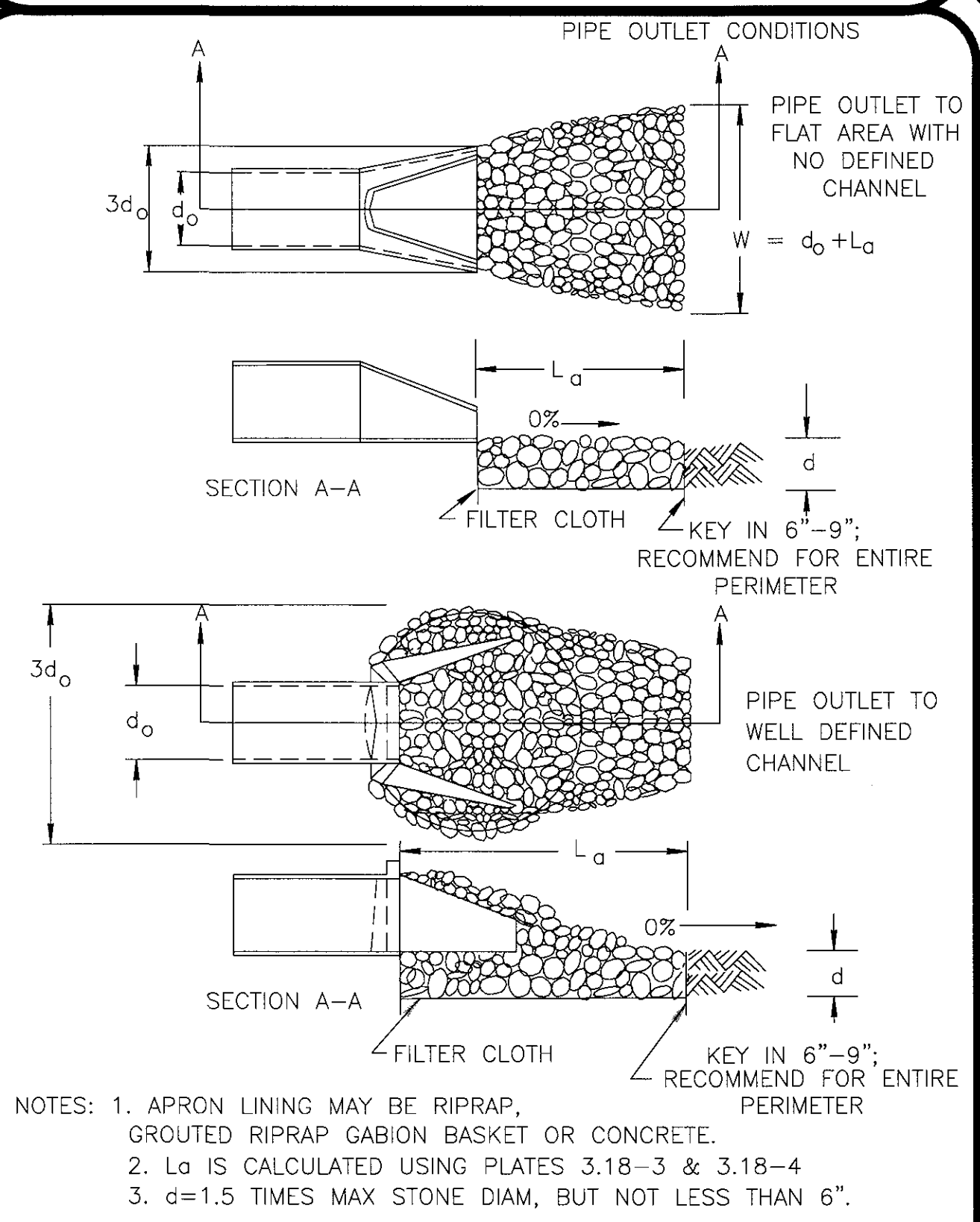
MULCHES:	RATES:		NOTES:
	Per Acre	Per 1000 sq. ft.	
Straw or Hay	1½ - 2 tons (Minimum 2 tons for winter cover)	70 - 90 lbs.	Free from weeds and coarse matter. Must be anchored. Spread with mulch blower or by hand.
Fiber Mulch	Minimum 1500 lbs.	35 lbs.	Do not use as mulch for winter cover or during hot, dry periods.* Apply as slurry.
Corn Stalks	4 - 6 tons	185 - 275 lbs.	Cut or shredded in 4-6" lengths. Air-dried. Do not use in fine turf areas. Apply with mulch blower or by hand.
Wood Chips	4 - 6 tons	185 - 275 lbs.	Free of coarse matter. Air-dried. Treat with 12 lbs nitrogen per ton. Do not use in fine turf areas. Apply with mulch blower, chip handler, or by hand.
Bark Chips or Shredded Bark	50 - 70 cu. yds.	1-2 cu. yds.	Free of coarse matter. Air-dried. Do not use in fine turf areas. Apply with mulch blower, chip handler, or by hand.

* When fiber mulch is the only available mulch during periods when straw should be used, apply at a minimum rate of 2000 lbs./ac. or 45 lbs./1000 sq. ft.

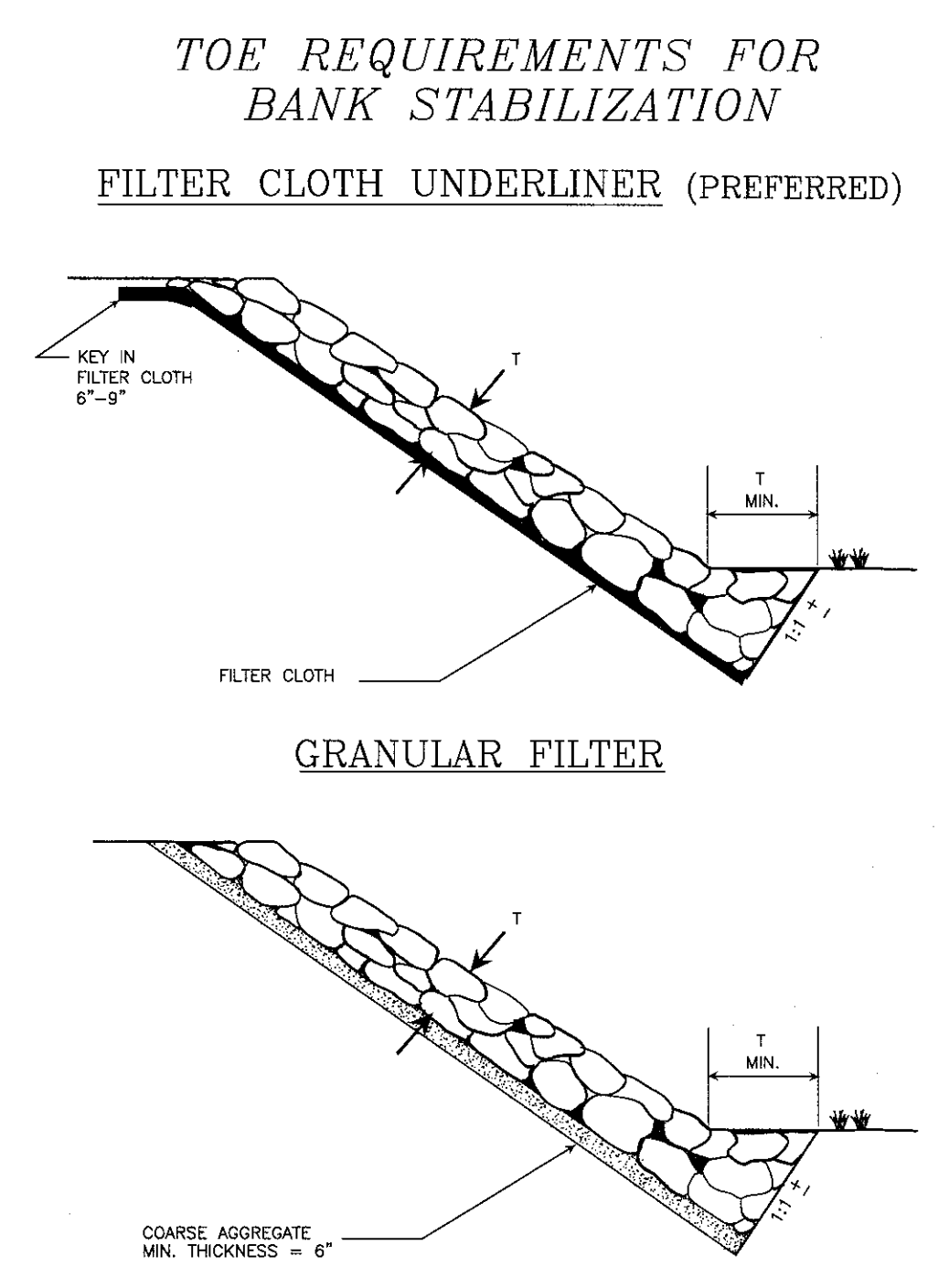
MULCHING (MU)
(STD. & SPEC. 3.35)



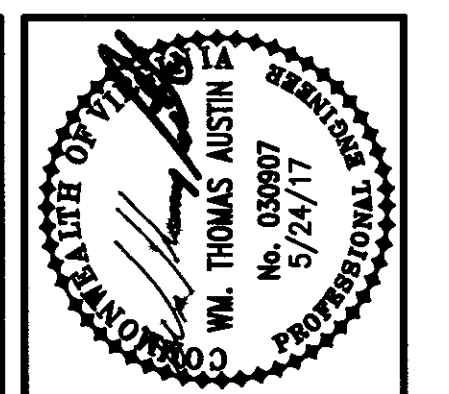
CHECK DAM (CD)
(STD. & SPEC. 3.20)



OUTLET PROTECTION (OP)
(STD. & SPEC. 3.18)



RIP RAP (RR)
(STD. & SPEC. 3.19)



Issue Date:	MAY 24, 2017
Drawn By:	ARB
Designed By:	ARB
Checked By:	WTA
Date:	5/24/17

Mattem & Craig
ENGINEERS-SURVEYORS
701 FIRST STREET, S.W.
ROANOKE, VIRGINIA 24016
(540) 345-9342
FAX (540) 345-7691

THE VILLAGE AT TINKER CREEK - PHASE IIIB
EROSION & SEDIMENT CONTROL
DETAILS
ROANOKE COUNTY, VIRGINIA

Vertical Scale:	N/A
Horizontal Scale:	N/A
Commission Number:	1966-P4
Sheet No.:	EC-6

EC-6