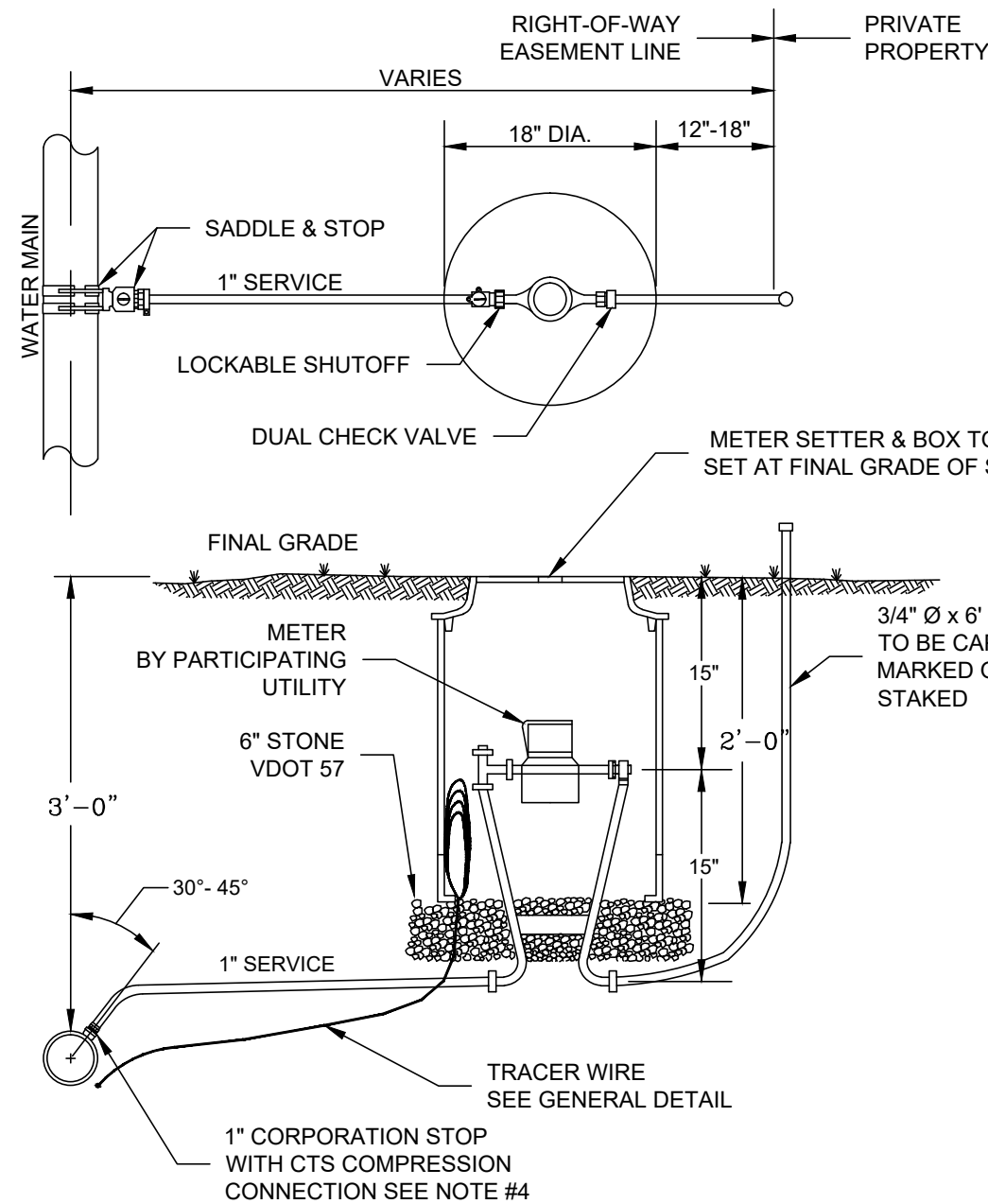


1. SETTER TO BE A.Y. McDONALD 20-215 WDD033, FORD VBHH72-15W-11-33 OR APPROVED EQUAL.  
2. SADDLES MUST BE USED WITH ALL PLASTIC & DUCTILE IRON PIPE. SERVICE SADDLES SHALL BE USED IN ACCORDANCE WITH WATER DISTRIBUTION PIPING SPECIFICATION. SERVICE SADDLES FOR PLASTIC PIPE SHALL BE: POWERSEAL 3417, OR 3412AS, ROMAC 202S, OR 306, OR FORD METER FS202 OR FS303. FOR DUCTILE IRON PIPE USE THE ABOVE OR POWERSEAL 3413, ROMAC 202 OR FORD METER F202.  
3. METER BOX SHALL BE CARSON/MID-STATES PLASTICS, INC. PLASTIC BOX WITH FORD A32-T (ELECTRONIC READ LID), ADS CORRUGATED HDPE BOX WITH FORD A32-T (ELECTRONIC READ LID), OR A.Y. McDONALD MODEL 74M32AT CAST IRON BASE & COVER OR APPROVED EQUAL. METER BOX SHALL NOT BE PLACED IN AREAS SUBJECT TO VEHICULAR TRAFFIC. IF TRAFFIC BEARING BOX IS REQUIRED, DESIGN ENGINEER SHALL CONSULT WITH PARTICIPATING UTILITY TO DETERMINE SITE SPECIFIC REQUIREMENTS.  
4. CORPORATION STOP SHALL BE FORD F1000-4-G OR APPROVED EQUAL.  
5. SERVICE SHALL BE "K" TYPE COPPER, OR COPPER TUBE SIZE POLYETHYLENE (PE) 4710, SODR-9 (200 psi).  
6. WHENEVER SIDEWALK EXISTS OR IS PROPOSED, MODIFY METER LOCATION AS DIRECTED.

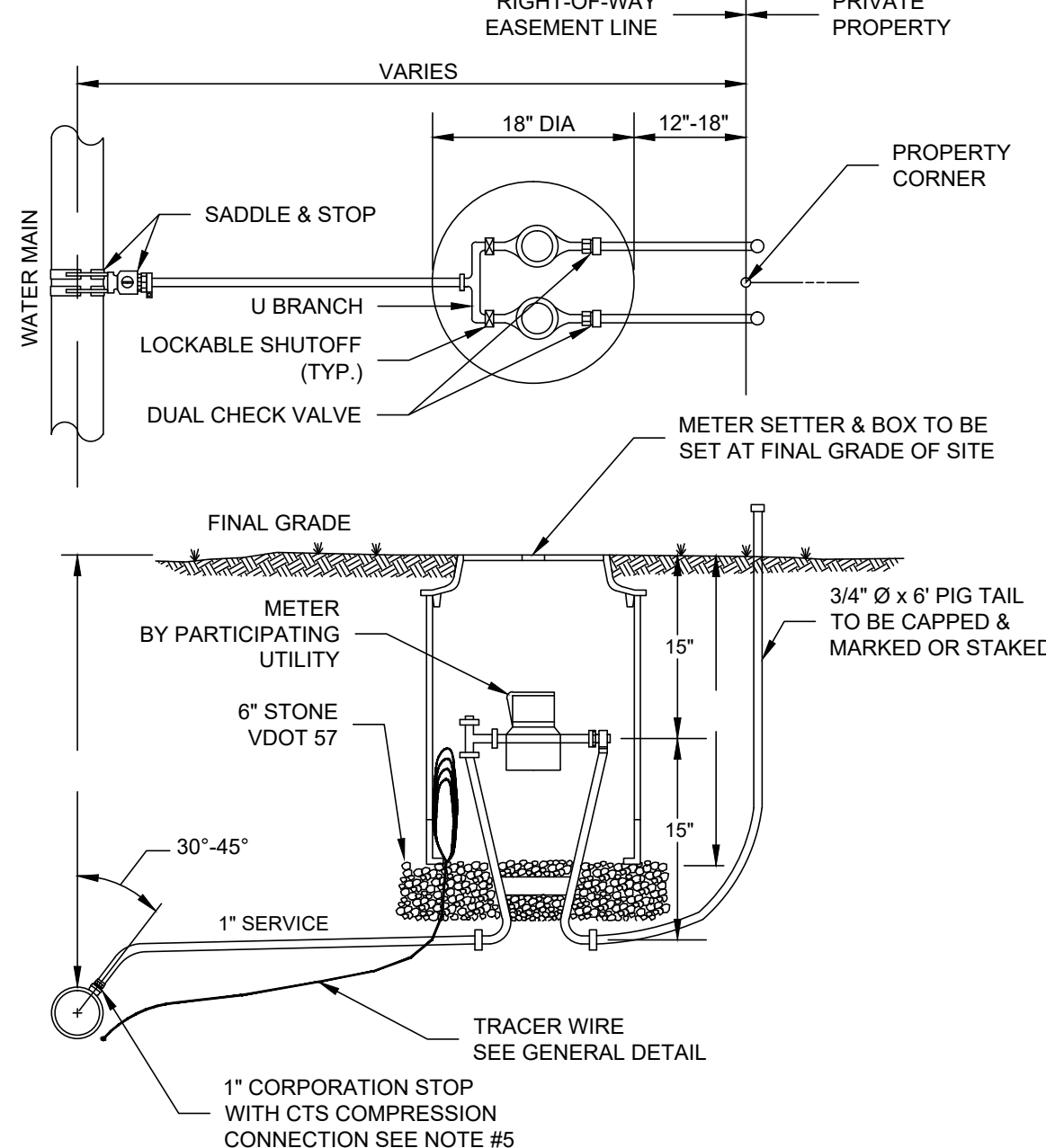


WESTERN VIRGINIA REGIONAL - CONSTRUCTION DETAIL

SINGLE RESIDENTIAL  
WATER SERVICE - (NEW DEVELOPMENT)  
(LINE PRESSURE UNDER 120 PSI)

W-1

1. SETTER TO BE A.Y. McDONALD 20-215 WDD033, FORD VBHH72-15W-11-33 OR APPROVED EQUAL.  
2. SADDLES MUST BE USED WITH ALL PLASTIC DUCTILE IRON PIPE. SERVICE SADDLES SHALL BE USED IN ACCORDANCE WITH WATER DISTRIBUTION PIPING SPECIFICATION. SERVICE SADDLES FOR PLASTIC PIPE SHALL BE: POWERSEAL 3417, OR 3412AS, ROMAC 202S, OR 306, OR FORD METER FS202 OR FS303. FOR DUCTILE IRON PIPE USE THE ABOVE OR POWERSEAL 3413, ROMAC 202 OR FORD METER F202.  
3. METER BOX SHALL BE CARSON/MID-STATES PLASTICS, INC. PLASTIC BOX WITH FORD A32-T (ELECTRONIC READ LID), ADS CORRUGATED HDPE BOX WITH FORD A32-T (ELECTRONIC READ LID), OR A.Y. McDONALD MODEL 74M32AT CAST IRON BASE & COVER OR APPROVED EQUAL. USE OF TRAFFIC BEARING BOX SHALL BE APPROVED BY THE AUTHORITY. METER BOX SHALL NOT BE PLACED IN AREAS SUBJECT TO VEHICULAR TRAFFIC. IF TRAFFIC BEARING BOX IS REQUIRED, DESIGN ENGINEER SHALL CONSULT WITH PARTICIPATING UTILITY TO DETERMINE SITE SPECIFIC REQUIREMENTS.  
4. WHENEVER SIDEWALK EXISTS OR IS PROPOSED, MODIFY METER LOCATION AS DIRECTED.  
5. CORPORATION STOP SHALL BE FORD F1000-4-G OR APPROVED EQUAL.  
6. SERVICE SHALL BE "K" TYPE COPPER, OR COPPER TUBE SIZE POLYETHYLENE (PE) 4710, SODR-9 (200 psi).

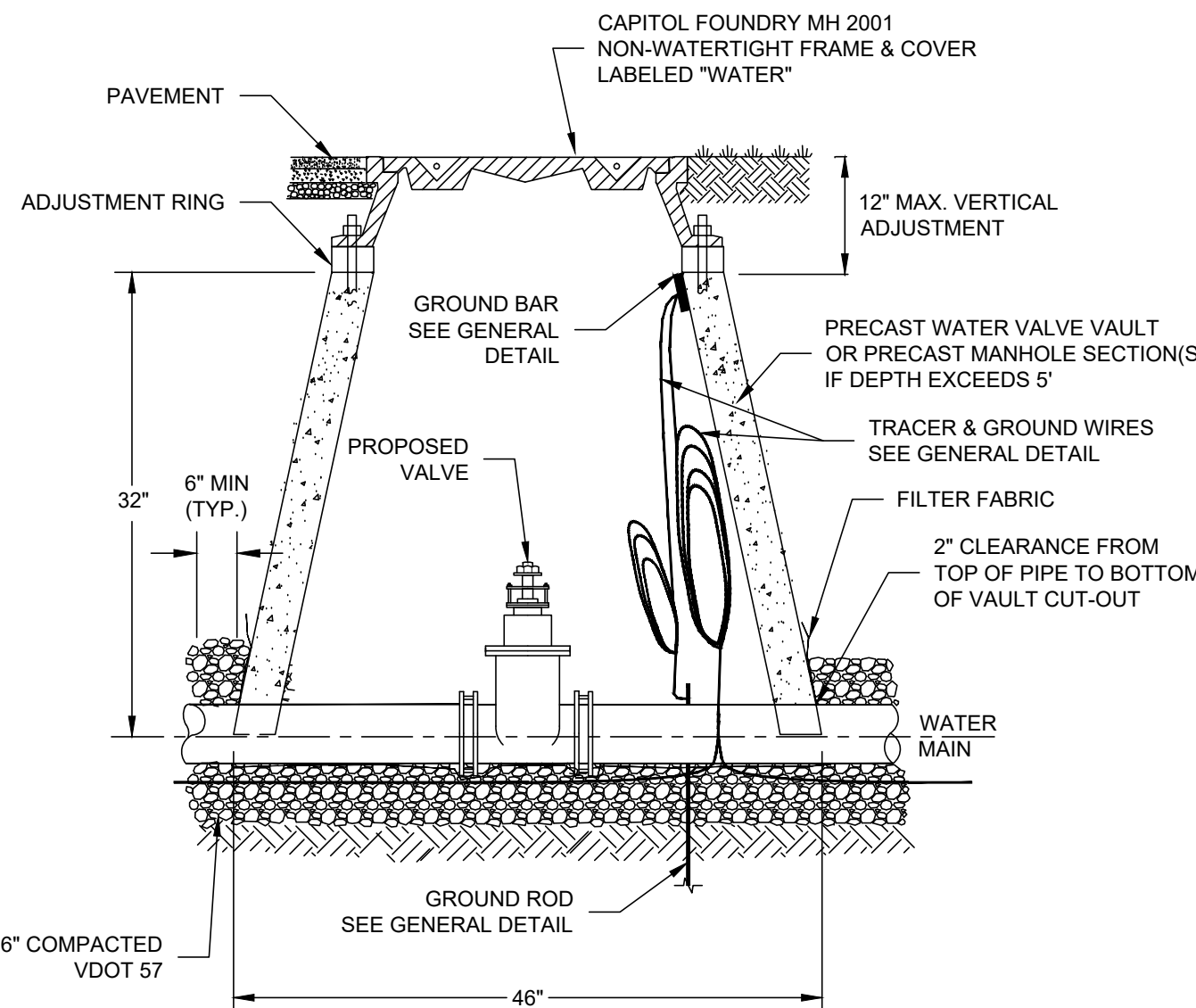


WESTERN VIRGINIA REGIONAL - CONSTRUCTION DETAIL

DOUBLE RESIDENTIAL  
WATER SERVICE  
(LINE PRESSURE UNDER 120 PSI)

W-4

1. FILTER FABRIC TO BE INSTALLED BETWEEN BOTTOM OF PIPE AND STONE BEDDING. FABRIC TO EXTEND VERTICALLY A MINIMUM OF 6" FROM BOTTOM OF VAULT (FULL CIRCUMFERENCE).

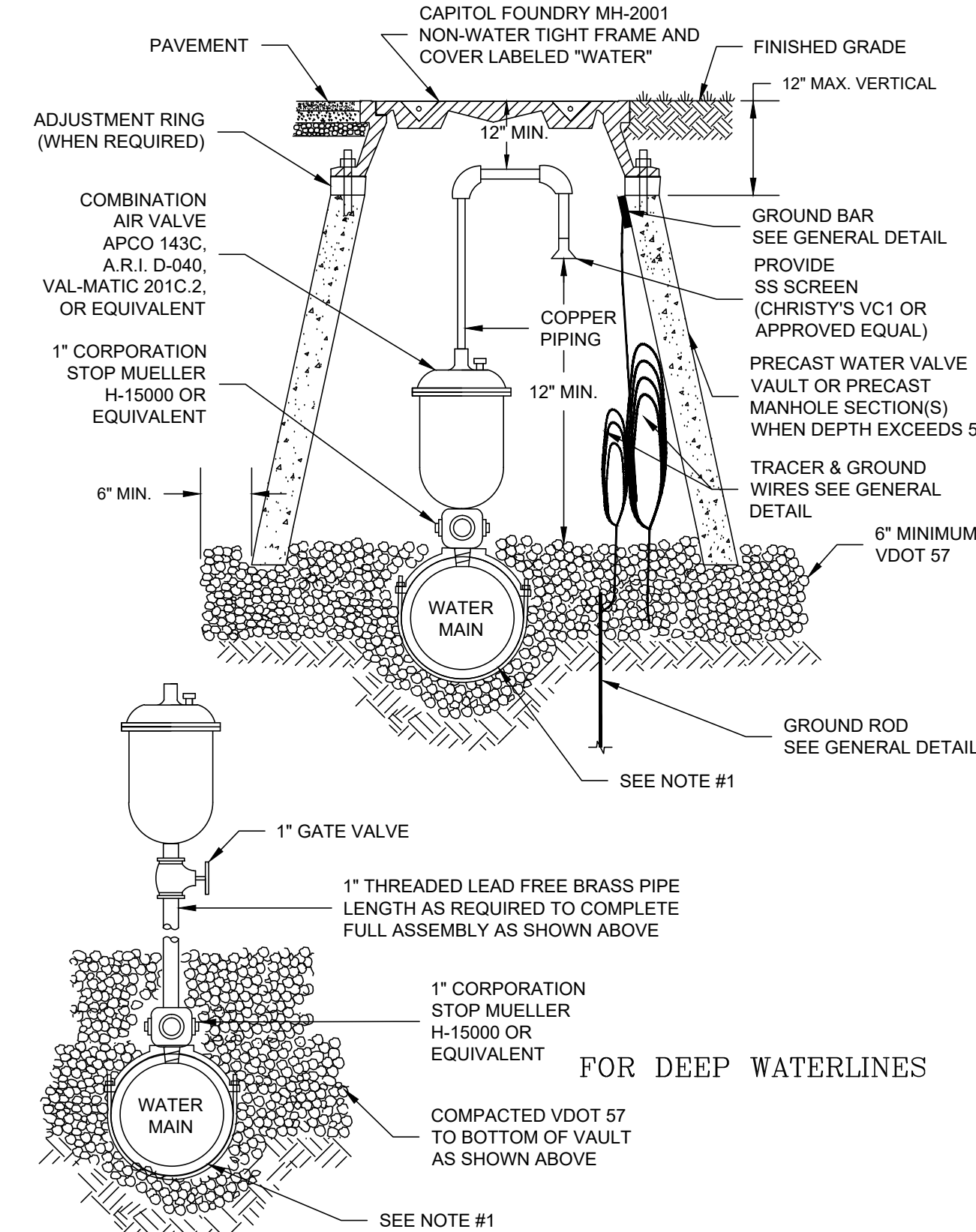


WESTERN VIRGINIA REGIONAL - CONSTRUCTION DETAIL

WATER LINE VALVE  
& VAULT

W-9

1. SEE RESIDENTIAL WATER SERVICE DETAIL FOR SADDLE REQUIREMENTS.  
2. LARGER COMBINATION VALVE MAY BE REQUIRED DEPENDING ON APPLICATION.

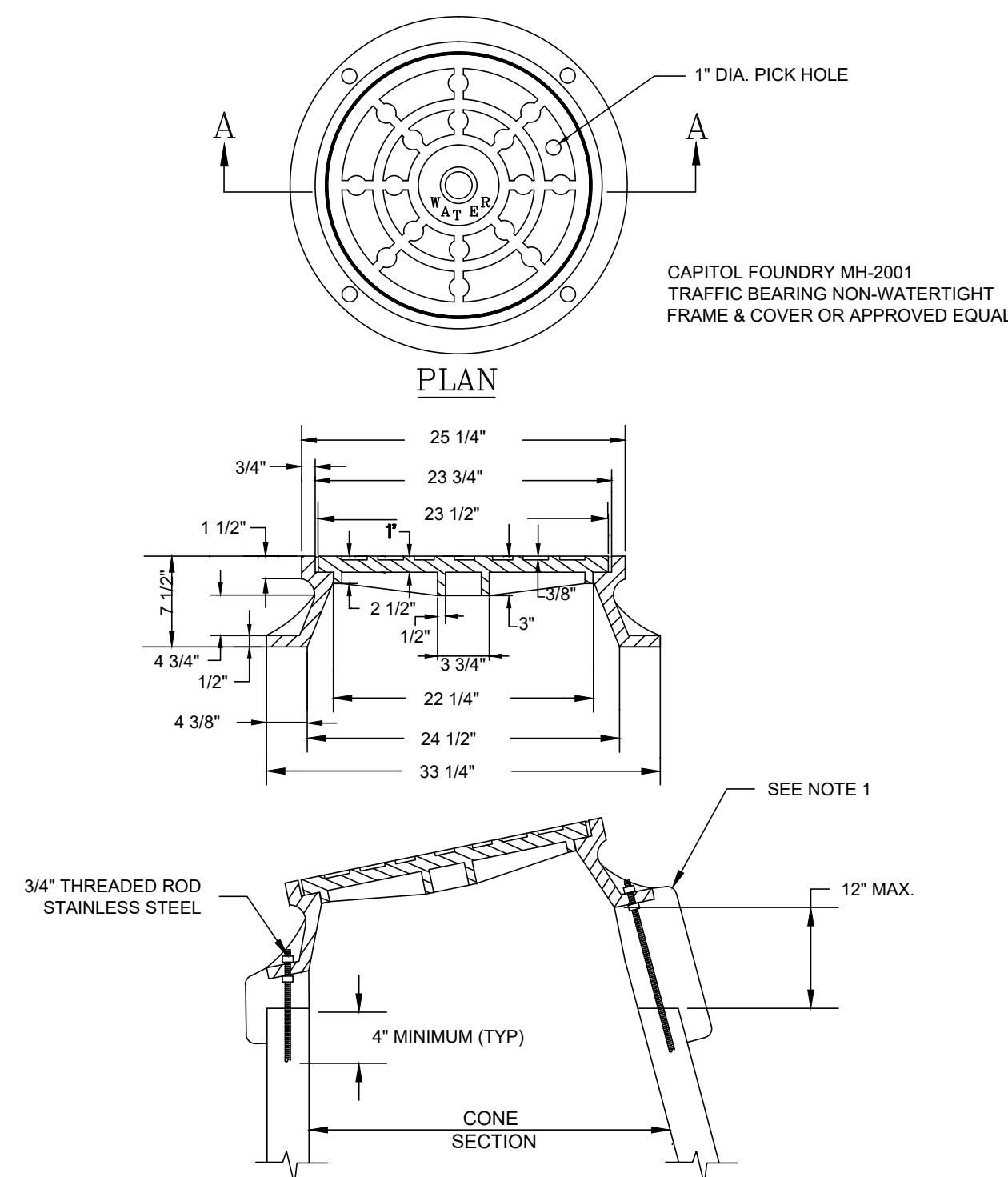


WESTERN VIRGINIA REGIONAL - CONSTRUCTION DETAIL

COMBINATION AIR VALVE ASSEMBLY

W-13

1. USE MODERATELY STIFF MIX OF NON SHRINK GROUT, SAND, AND 1/2" AND LESS DIAMETER GRAVEL WITH 28 DAYS STRENGTH AT MINIMUM 3,000 P.S.I.  
2. MIX IS TO BE FORCED INTO ALL GROOVES AND UNDER FLANGE OF FRAME AND LEFT AT OR ABOVE TOP OF FLANGE.  
3. DO NOT BACKFILL AROUND FRAME AND COVER, FOR 48 HOURS AFTER CONCRETE IS PLACED. THE USE OF HIGH EARLY STRENGTH CEMENT WOULD REDUCE TIME TO (24 HRS.)  
4. RESTRICT TRAFFIC LOAD FOR A MINIMUM OF 24 HOURS.

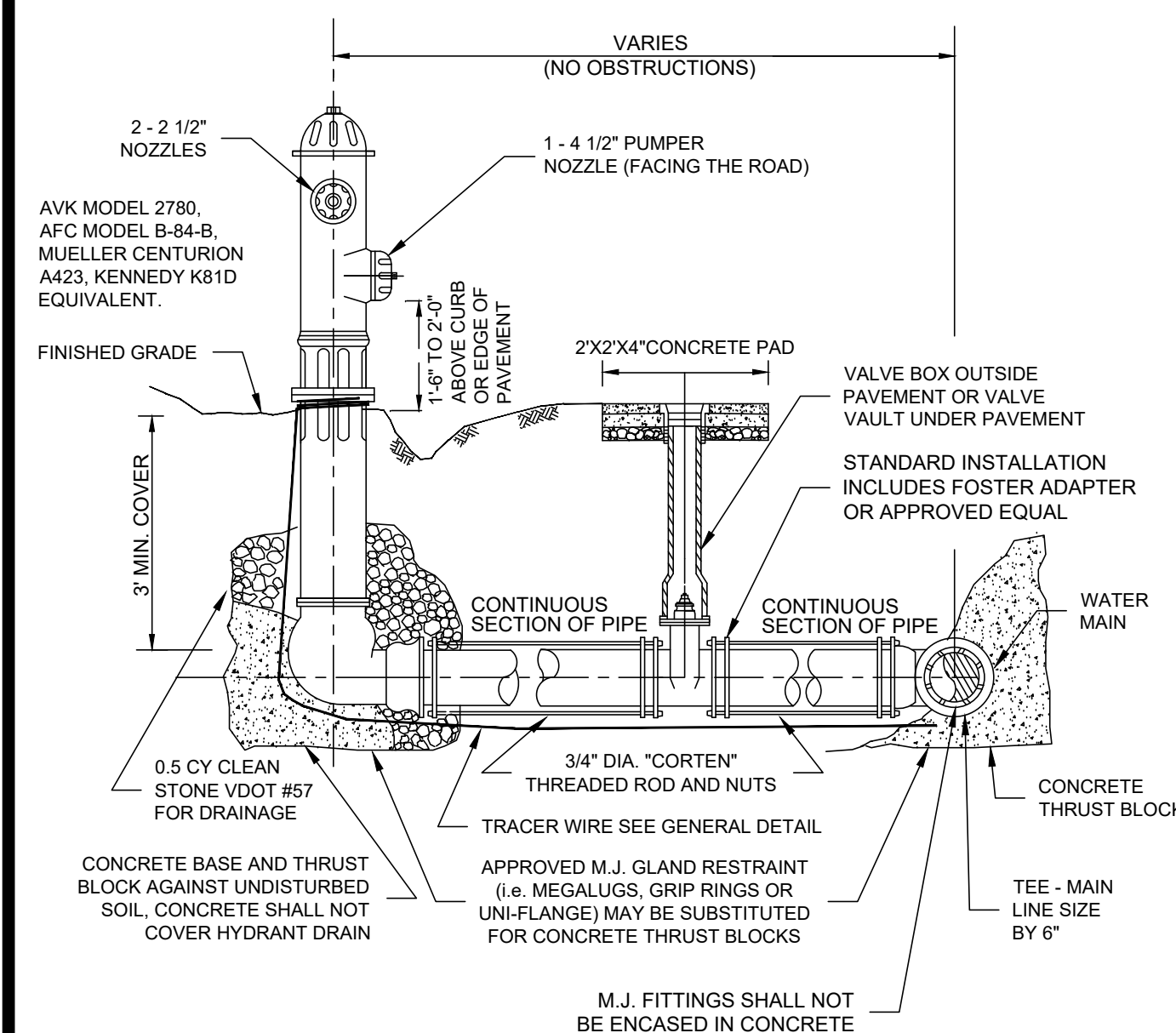


WESTERN VIRGINIA REGIONAL - CONSTRUCTION DETAIL

VAULT FRAME  
AND COVER

W-16

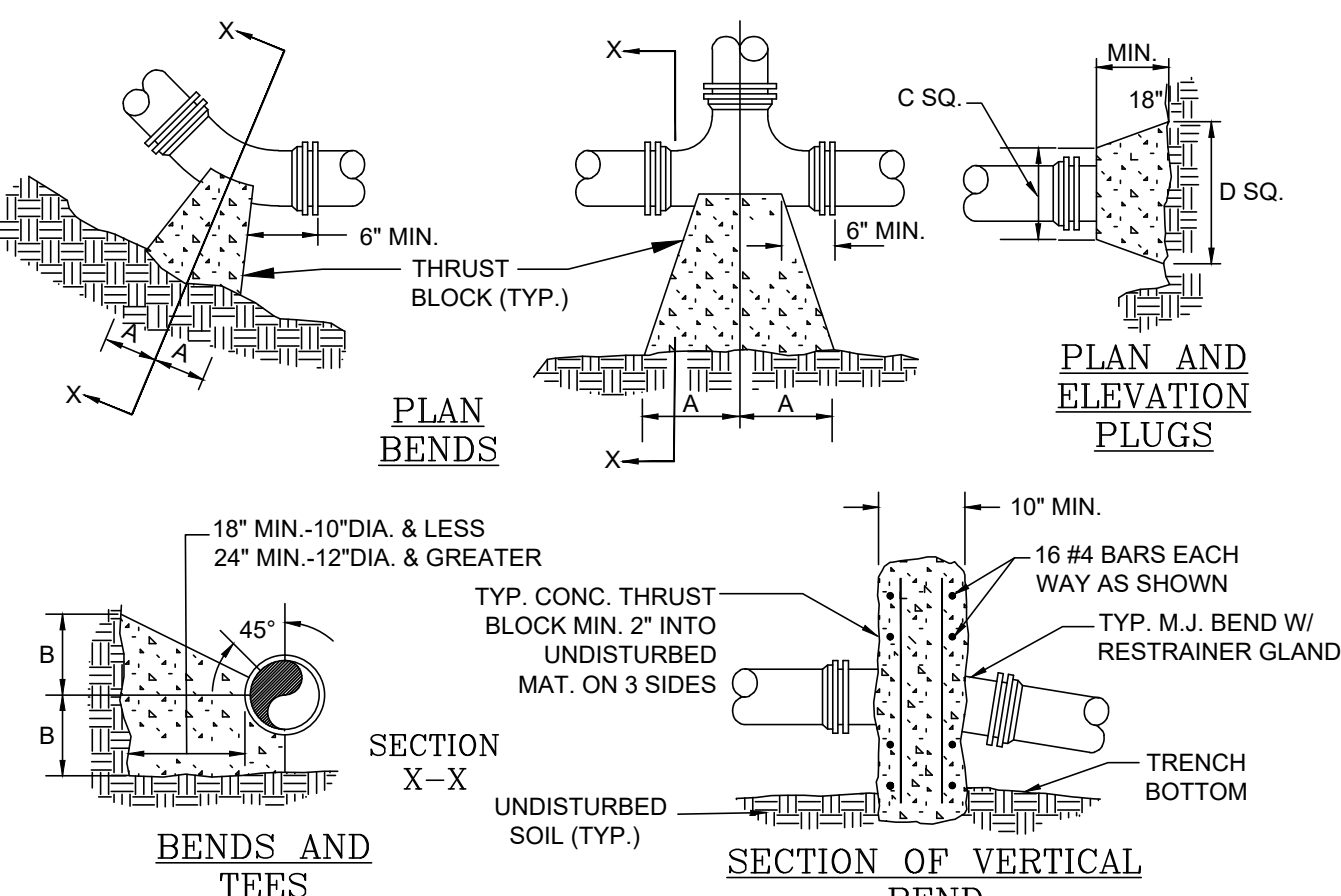
1. PUBLIC HYDRANTS SHALL BE PAINTED SILVER WITH AN OIL-BASED PAINT. PRIVATE HYDRANTS SHALL ALSO BE PAINTED SILVER WITH AN OIL-BASED PAINT UNLESS OTHERWISE SPECIFIED BY THE JURISDICTIONAL FIRE MARSHALL.  
2. FIRE HYDRANT SHALL BE INSTALLED 2' MIN. AND 4' MAX. FROM BACK OF CURB OR 6' MIN. AND 12' MAX. FROM EDGE OF PAVEMENT WHEN CURB IS NOT PRESENT. FIRE HYDRANT TO BE INSTALLED WITHIN RIGHT-OF-WAY OR EASEMENT LINE.  
3. AREA AROUND HYDRANT AT A RADIUS OF 4' TO BE LEVEL AND UNOBSTRUCTED.  
4. WATERPROOF BAGS OR OUT OF SERVICE RINGS SHALL BE PLACED OVER ALL NEWLY INSTALLED FIRE HYDRANTS.  
5. HIGH PRESSURE (OVER 120 PSI) REQUIRES THE USE OF ALL 3 RESTRAINTS.  
6. IF DURING CONSTRUCTION THE SEASONAL WATER LEVEL IS NOTED TO BE ABOVE THE DRAIN OUTLETS OF THE PROPOSED HYDRANT, THE PARTICIPATING UTILITY WILL BE NOTIFIED IMMEDIATELY SO THAT THE HYDRANT CAN BE RELOCATED TO A SUITABLE LOCATION, OMITTED, OR THE DRAIN HOLE PLUGGED.  
7. TWO WRAPPS OF TRACER WIRE SHALL BE WRAPPED AROUND BASE OF HYDRANT.  
8. APPROVED MODELS - AVK MODEL 2780, AFC MODEL B-84-B-5, MUELLER CENTURION A423, KENNEDY K81D EQUIVALENT.



WESTERN VIRGINIA REGIONAL - CONSTRUCTION DETAIL

FIRE HYDRANT  
ASSEMBLY

W-17



- NOTES
- FOR VERT. BEND DOWN IN EXCESS OF 11 1/4" BEND, ANCHORAGE SHALL BE DESIGNED BY ENGINEER.
  - FOR VERT. BEND UPWARD, BLOCKING TO BE SIMILAR TO THAT FOR HORIZ. BEND.
  - GLANDS & BOLTS SHALL BE PROTECTED FROM CONC. WITH PLASTIC SHEETING WHEN POURING THRUST BLOCKS.
  - ALL THRUST BLOCK & SUPPORT CONCRETE SHALL BE 3000 PSI READY MIX CONCRETE.
  - THRUST BLOCKS WITH "B" DIMENSION GREATER THAN 30" SHALL HAVE THE RESTRAINED PIPE INSTALLED WITH A MINIMUM OF 4' OF COVER.
  - IF UNDER 100 PSI WORKING PRESSURE, RESTRAINED JOINTS MUST BE USED. IF EQUAL OR GREATER THAN 100 PSI, BOTH THRUST BLOCK AND RESTRAINED JOINTS ARE REQUIRED.
  - WHEN THRUST BLOCK IS REQUIRED BUT NOT FEASIBLE TO CONSTRUCT, THRUST COLLAR SHALL BE USED. SEE THRUST COLLAR DETAIL.

PRESSURE = 200psi  
BEARING = 2000psf  
FACTOR OF SAFETY = 1.5

PIPE SIZE	90° BEND	45° BEND	22 1/2° BEND	11 1/4° BEND	TEE	PLUG
4"	8"	12"	8"	8"	6"	6"
6"	18"	12"	8"	8"	8"	11"
8"	18"	13"	10"	10"	8"	11"
10"	20"	16"	12"	14"	8"	12"
12"	20"	16"	12"	14"	8"	12"
16"	26"	20"	16"	18"	11"	13"
24"	82"	42"	62"	30"	44"	22"
30"	185"	42"	100"	42"	52"	42"

THRUST BLOCK  
REQUIREMENTS

W-18

1. ALL JOINTS SHALL BE RESTRAINED ON BOTH SIDES OF THE FITTING AND DOCUMENTED BY THE INSPECTOR FOR THE LENGTH SHOWN UNLESS OTHERWISE INDICATED.  
2. REDUCER IS ONE SIZE SMALLER THAN PIPE LISTED. RESTRAINED LENGTH IS UPSTREAM ON THE LARGE SIDE OF THE REDUCER.  
3. IF UNDER 100 PSI WORKING PRESSURE, RESTRAINED JOINT(S) ARE TO BE USED. IF EQUAL TO OR UNDER 100 PSI WORKING PRESSURE, BOTH THRUST BLOCK AND RESTRAINED JOINTS SHALL BE USED.  
4. FOR RESTRAINED JOINT PIPING REQUIREMENTS AT FITTING R.J. PVC AND R.J. DIP MAY BE USED INTERCHANGEABLY.

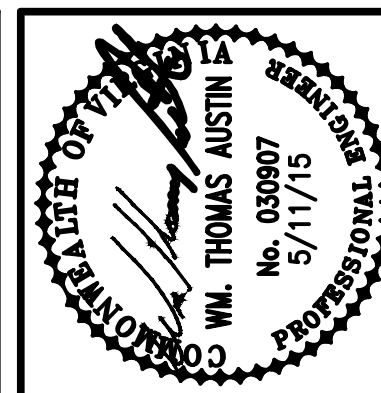
FACTOR OF SAFETY = 1.5

PIPE SIZE	PIPE MATL.	90° BEND	45° BEND	22 1/2° BEND	11 1/4° BEND	VALVE /PLUG	TEE BRANCH	REDUCER (NOTE 2)	VERT. 45°	VERT. 22 1/2°	VERT. 11 1/4°
6"	D.I.	28'	21'	6'	3'	38'	34'	20'	23'	11'	5'
8"	D.I.	37'	21'	7'	4'	51'	47'	21'	30'	15'	7'
10"	D.I.	45'	21'	9'	4'	61'	57'	20'	37'	18'	9'
12"	D.I.	53'	22'	11'	5'	73'	69'	38'	43'	21'	10'
6"	PVC	30'	21'	6'	3'	56'	38'	29'	35'	17'	8'
8"	PVC	40'	21'	8'	4'	74'	56'	31'	46'	22'	11'
10"	PVC	47'	21'	9'	5'	89'	82'	30'	56'	27'	13'
12"	PVC	56'	23'	11'	6'	106'	88'	56'	66'	32'	16'

WESTERN VIRGINIA REGIONAL - CONSTRUCTION DETAIL

MINIMUM THRUST  
RESTRAINT  
OF PIPE JOINTS  
DESIGN LENGTHS

W-19



Revisions	Date	Comments
1	7/17/15	1ST REVIEW
2	9/4/15	APPROVED SET

Issue Date: **MAY 11, 2015**  
Drawn By: RWA  
Designed By: RWA  
Checked By: WTA  
Date: 5/11/15

**Mattem & Craig**  
ENGINEERS • SURVEYORS  
701 FIRST STREET, S.W.  
ROANOKE, VIRGINIA 24016  
(540) 345-7916  
FAX (540) 345-7691

THE VILLAGE AT TINKER CREEK - PHASE IIIA  
UTILITY DETAILS - WWA WATER  
ROANOKE COUNTY, VIRGINIA

Vertical Scale:  
N/A  
Horizontal Scale:  
N/A  
Commission Number:  
1966-P3  
Sheet No.:

C-6