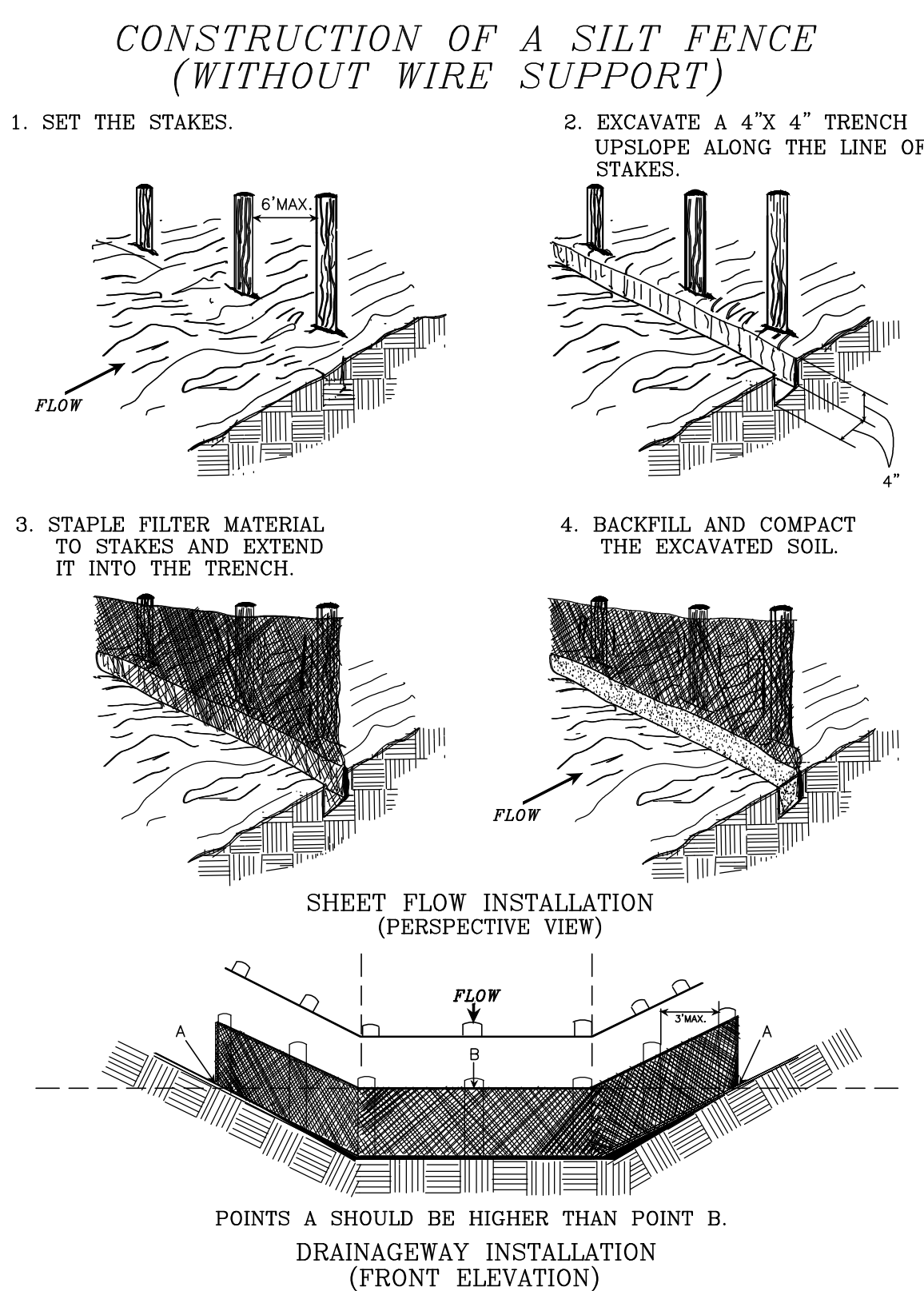


STONE CONSTRUCTION ENTRANCE
(STD. & SPEC. 3.02)

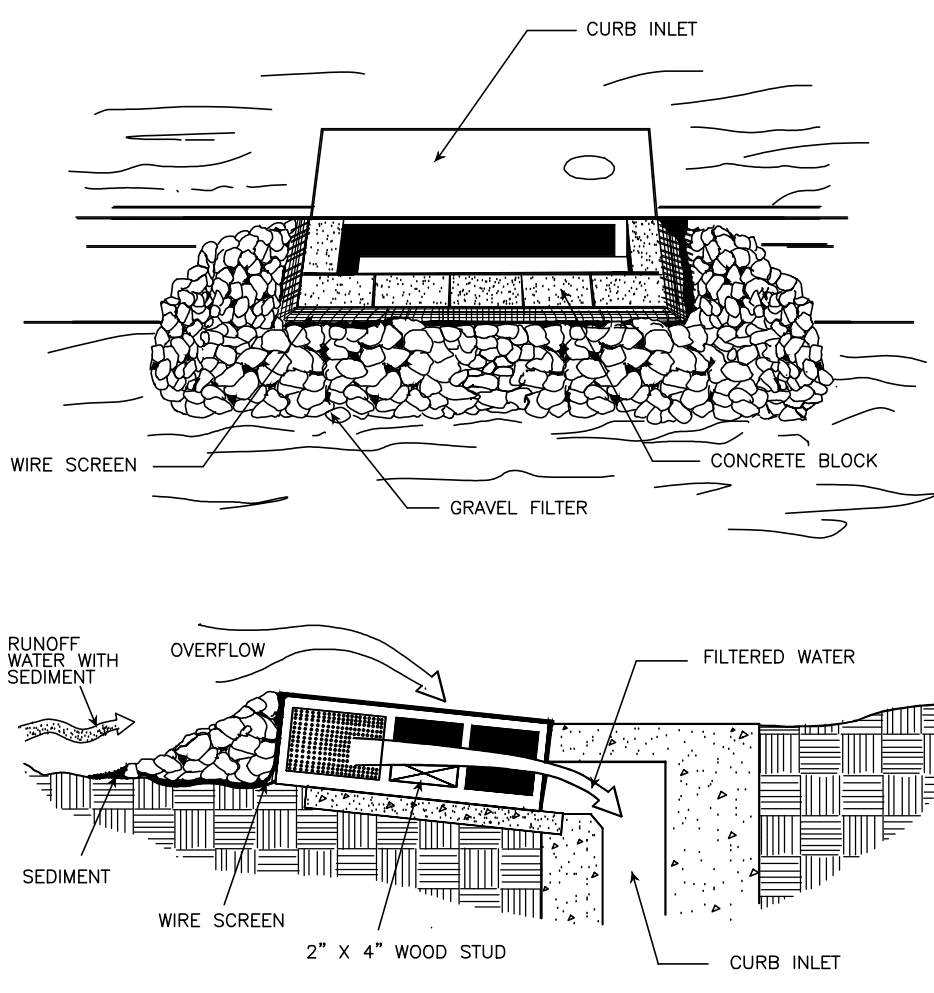
CE



SILT FENCE
(STD. & SPEC. 3.05)

SF

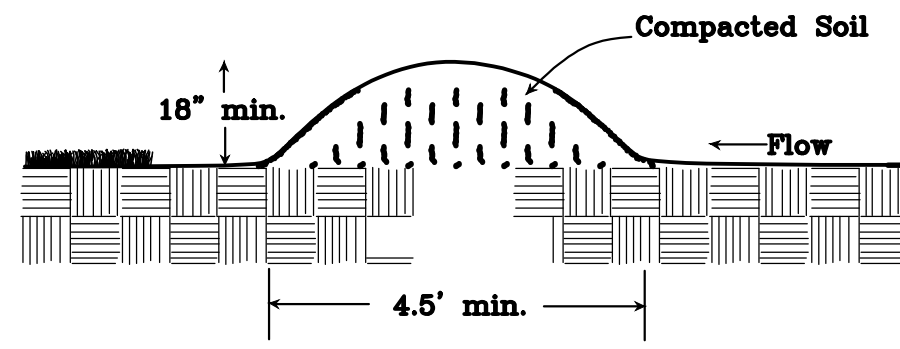
**BLOCK & GRAVEL CURB INLET
SEDIMENT FILTER**



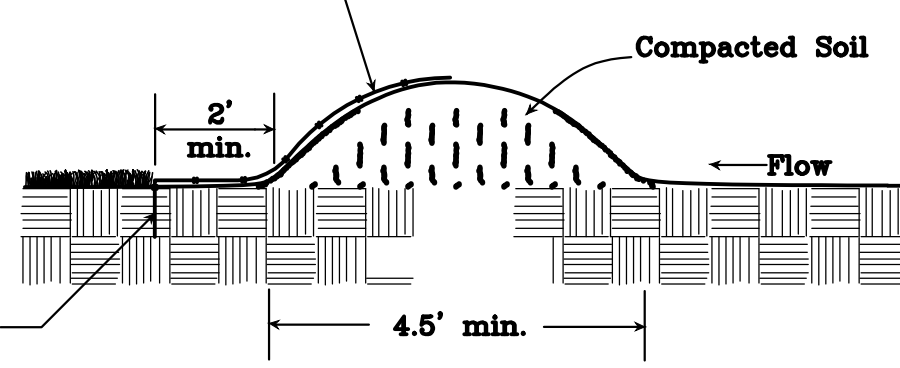
STORM DRAIN INLET PROTECTION
(STD. & SPEC. 3.07)

IP

TEMPORARY DIVERSION DIKE



Where (DD) / (E/M)
Shown, Provide
Stabilization Matting,
Type EC-3, Type A



WITH STABILIZATION MATTING

TEMPORARY DIVERSION DIKE
(STD. & SPEC. 3.09)

DD

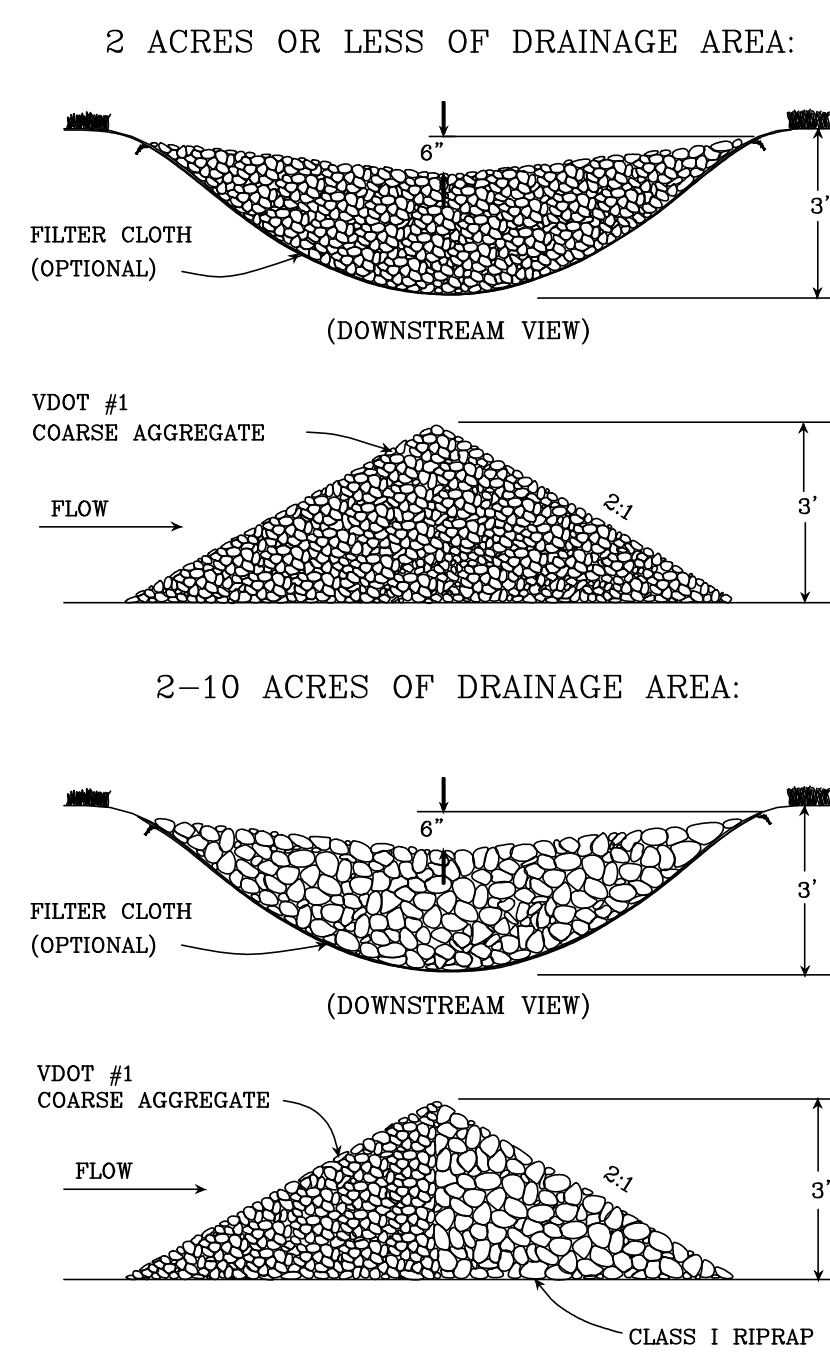
TABLE 3.35-A ORGANIC MULCH MATERIALS AND APPLICATION RATES			
MULCHES:	RATES:		NOTES:
	Per Acre	Per 1000 sq. ft.	
Straw or Hay	1½ - 2 tons (Minimum 2 tons for winter cover)	70 - 90 lbs.	Free from weeds and coarse matter. Must be anchored. Spread with mulch blower or by hand.
Fiber Mulch	Minimum 1500 lbs.	35 lbs.	Do not use as mulch for winter cover or during hot, dry periods.* Apply as slurry.
Corn Stalks	4 - 6 tons	185 - 275 lbs.	Cut or shredded in 4-6" lengths. Air-dried. Do not use in fine turf areas. Apply with mulch blower or by hand.
Wood Chips	4 - 6 tons	185 - 275 lbs.	Free of coarse matter. Air-dried. Treat with 12 lbs nitrogen per ton. Do not use in fine turf areas. Apply with mulch blower, chip handler, or by hand.
Bark Chips or Shredded Bark	50 - 70 cu. yds.	1-2 cu. yds.	Free of coarse matter. Air-dried. Do not use in fine turf areas. Apply with mulch blower, chip handler, or by hand.

* When fiber mulch is the only available mulch during periods when straw should be used, apply at a minimum rate of 2000 lbs./ac. or 45 lbs./1000 sq. ft.

MULCHING
(STD. & SPEC. 3.35)

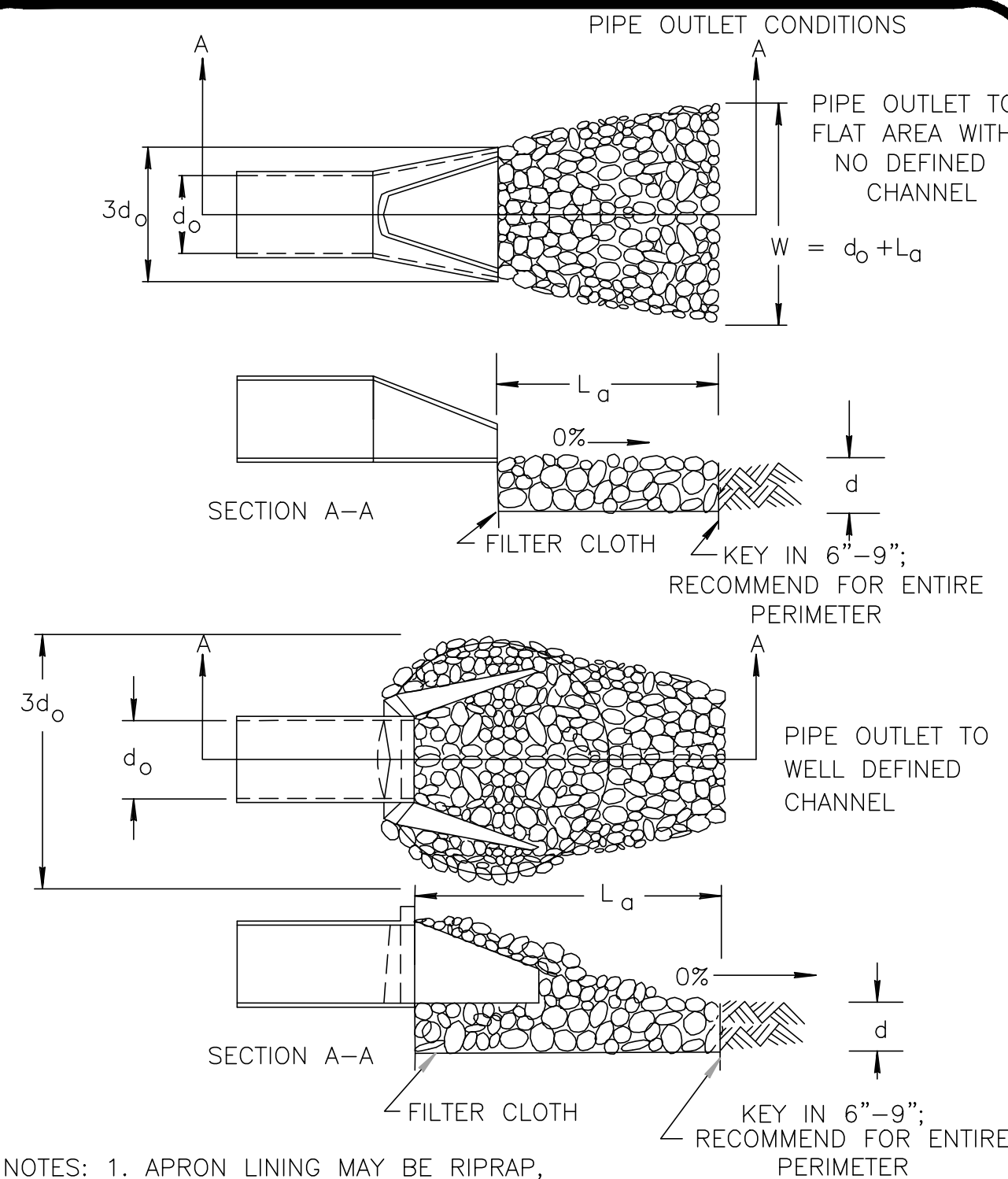
MU

ROCK CHECK DAM



CHECK DAM
(STD. & SPEC. 3.20)

CD



NOTES: 1. APRON LINING MAY BE RIPRAP, GROUTED RIPRAP GABION BASKET OR CONCRETE.
2. L_a IS CALCULATED USING PLATES 3.18-3 & 3.18-4
3. $d = 1.5$ TIMES MAX STONE DIAM, BUT NOT LESS THAN 6".

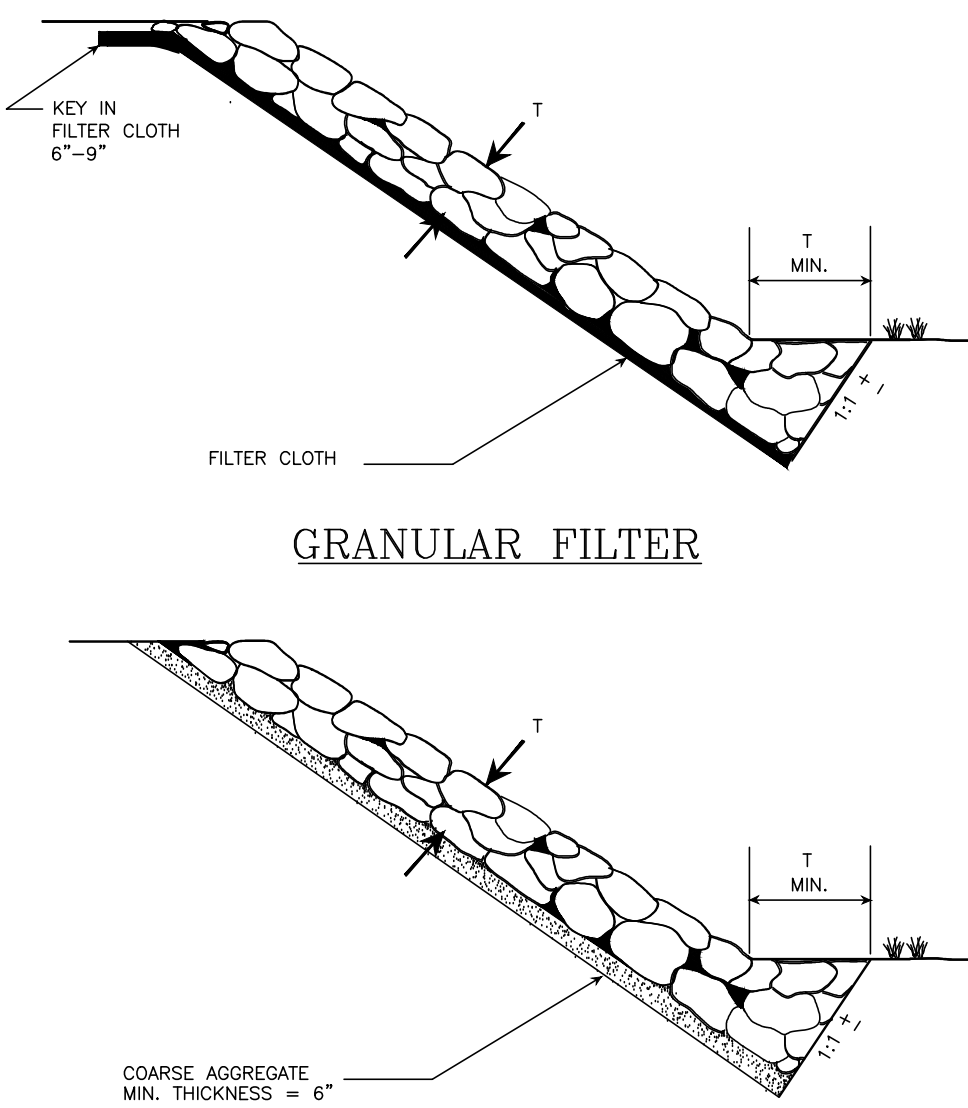
OUTLET PROTECTION
(STD. & SPEC. 3.18)

OP

OUTLET PROTECTION TABLE				
	L_a	d_o	d	RIP-RAP CLASS
OP #1	8.5'	48"	24"	I
OP #2	12'	24"	24"	I
OP #3	5'	15"	18"	I

**TOE REQUIREMENTS FOR
BANK STABILIZATION**

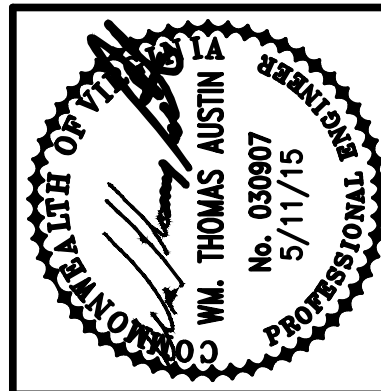
FILTER CLOTH UNDERLINER (PREFERRED)



RIP RAP

(STD. & SPEC. 3.19)

RR



Date	7/7/15
Revisions	1 1ST REVIEW COMMENTS 2 APPROVED SET

Issue Date:	MAY 11, 2015
Drawn By:	RWA
Designed By:	RWA
Checked By:	WTA
Date:	5/11/15

Mattern & Craig
ENGINEERS • SURVEYORS
701 FIRST STREET, S.W.
ROANOKE, VIRGINIA 24016
(840) 345-9342
FAX (840) 345-7691

THE VILLAGE AT TINKER CREEK - PHASE IIIA
**EROSION & SEDIMENT CONTROL
DETAILS**
ROANOKE COUNTY, VIRGINIA

Vertical Scale:
N/A

Horizontal Scale:
N/A

Commission Number:
1966-P3

Sheet No.:

EC-6