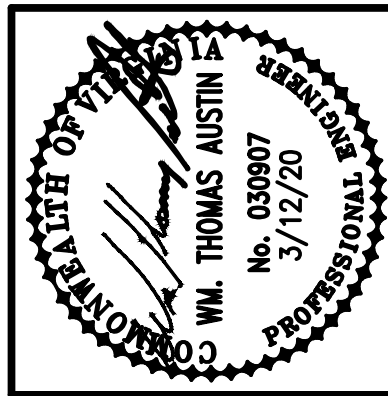
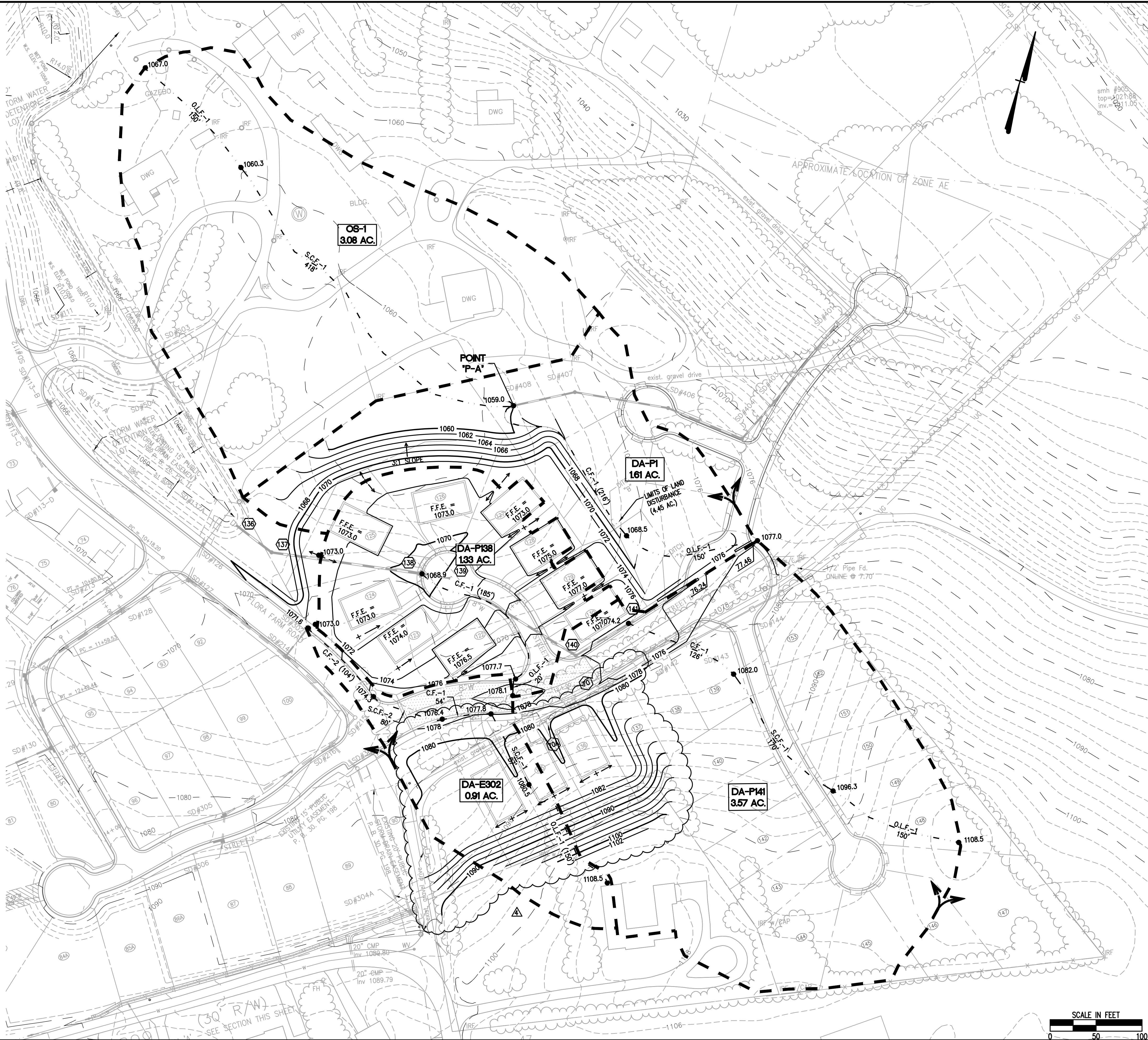


LOT NO.	IMPERVIOUS AREA (AC)	LOT DRAINS TO INLET:			
		DA-P138	DA-P141	DA-E302	DA-F142
122	0.058	0.058			
123	0.058	0.058			
124	0.061	0.061			
125	0.065	0.065			
126	0.058	0.058			
127	0.060	0.06			
128	0.056	0.056			
129	0.059	0.059			
130	0.060	0.032	0.028		
134	0.064			0.064	
135	0.058			0.029	0.029
136	0.054				0.054
Total:	0.711	0.507	0.028	0.093	0.083

NOTES:

1. IMPERVIOUS AREA LISTED ABOVE INCLUDE HOUSE FOOTPRINT, DRIVEWAY, AND ALLOWANCE FOR SIDEWALKS AND PATIOS WITHIN THE LOT AREA ONLY.
2. DA-E302 IS EXISTING SD INLET ON FLORA FARM ROAD.
3. DA-F142 IS FUTURE SD INLET TO BE LOCATED IN FUTURE PHASE IIIB - OLD YORK ROAD.



Revisions	Date	Comments
1	7/17/15	1ST REVIEW COMMENTS
2	9/4/15	APPROVED SET
3	7/21/17	PLAN REVISION NO. 1
4	3/12/20	PLAN REVISION NO. 2

Issue Date:	MAY 11, 2015
Drawn By:	RWA
Designed By:	RWA
Checked By:	WTA
Date:	5/11/15

**Mattern & Craig**  
ENGINEERS SURVEYORS  
701 FIRST STREET, S.W.  
ROANOKE, VIRGINIA 24016  
(540) 345-9342  
FAX (540) 345-7691

THE VILLAGE AT TINKER CREEK - PHASE IIIA  
POST-DEVELOPMENT DRAINAGE  
DIVIDES (PHASE IIIA) & LOT GRADING  
ROANOKE COUNTY, VIRGINIA

Vertical Scale:	N/A
Horizontal Scale:	1" = 50'
Commission Number:	1966-P3
Sheet No.:	D-2

