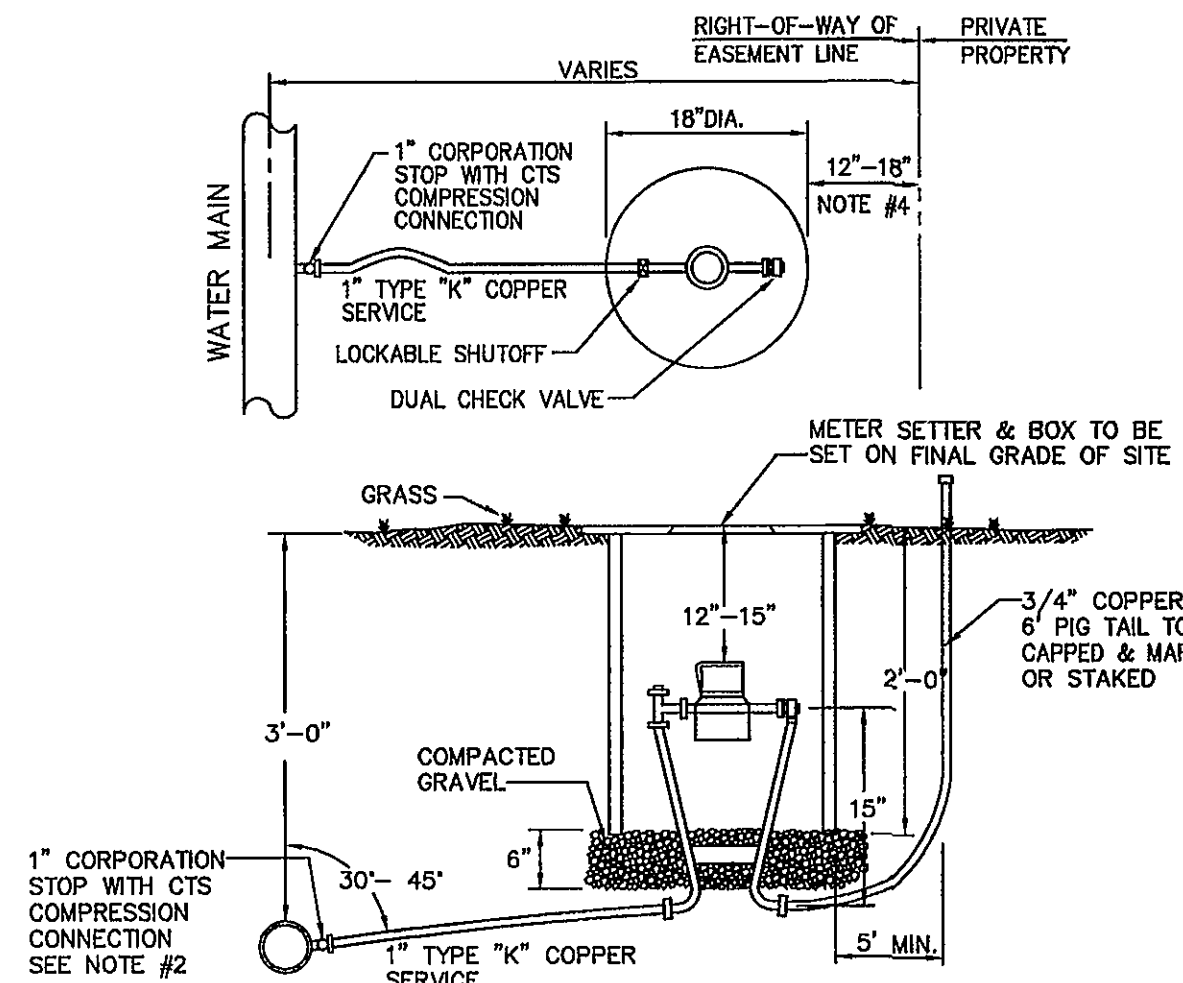


NOTES

1. SETTER TO BE A.Y. McDONALD #20-215 WDLL33, FORD VBHH72-15W-1133 OR APPROVED EQUAL.
2. SADDLES MUST BE USED WITH ALL PLASTIC & CLASS 50 DUCTILE IRON PIPE. SERVICE SADDLES SHALL BE USED IN ACCORDANCE WITH SECTION 2665 OF THE WATER STANDARDS. SERVICE SADDLES FOR PLASTIC PIPE SHALL BE: POWERSEAL 3417, OR 3412AS, ROMAC 202S, OR 306, OR FORD METER F2022 OR F2023. FOR DUCTILE IRON PIPE USE THE ABOVE OR POWERSEAL 3413, ROMAC 202 OR FORD METER F202.
3. METER BOX MUST BE MID-STATES PLASTICS, INC. PLASTIC BOX WITH FORD A32-T (ELECTRONIC READ LID) OR A.Y. McDONALD MODEL 74M32C-TC CAST IRON BASE & COVER OR APPROVED EQUAL.
4. WHENEVER SIDEWALK EXISTS OR IS PROPOSED, MODIFY METER LOCATION AS DIRECTED.
5. CORPORATION STOP MUST BE FORD F1000-4-6 OR APPROVED EQUAL.

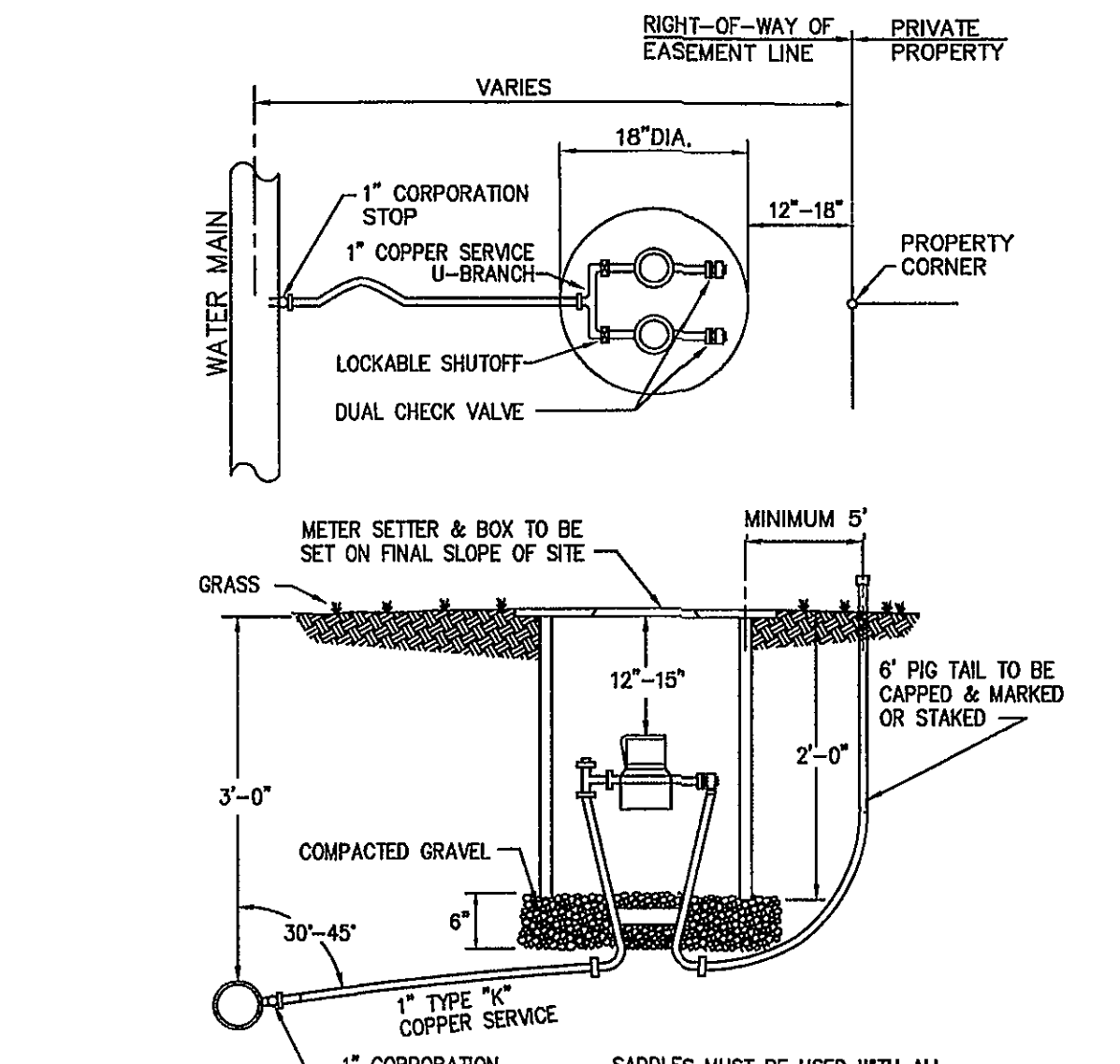


TYPE 'A' SINGLE
RESIDENTIAL WATER SERVICE

W-01

NOTES

1. SETTER TO BE A.Y. McDONALD #20-215 WDLL33, FORD VBHH72-15W-1133 OR APPROVED EQUAL.
2. METER BOX MUST BE MID-STATES PLASTICS, INC. PLASTIC BOX WITH FORD A32-T (ELECTRONIC READ LID) OR A.Y. McDONALD MODEL 74M32C-TC CAST IRON BASE & COVER OR APPROVED EQUAL.
3. CORPORATION STOP MUST BE FORD F1000-4-6 OR APPROVED EQUAL.



DOUBLE RESIDENTIAL
WATER SERVICE

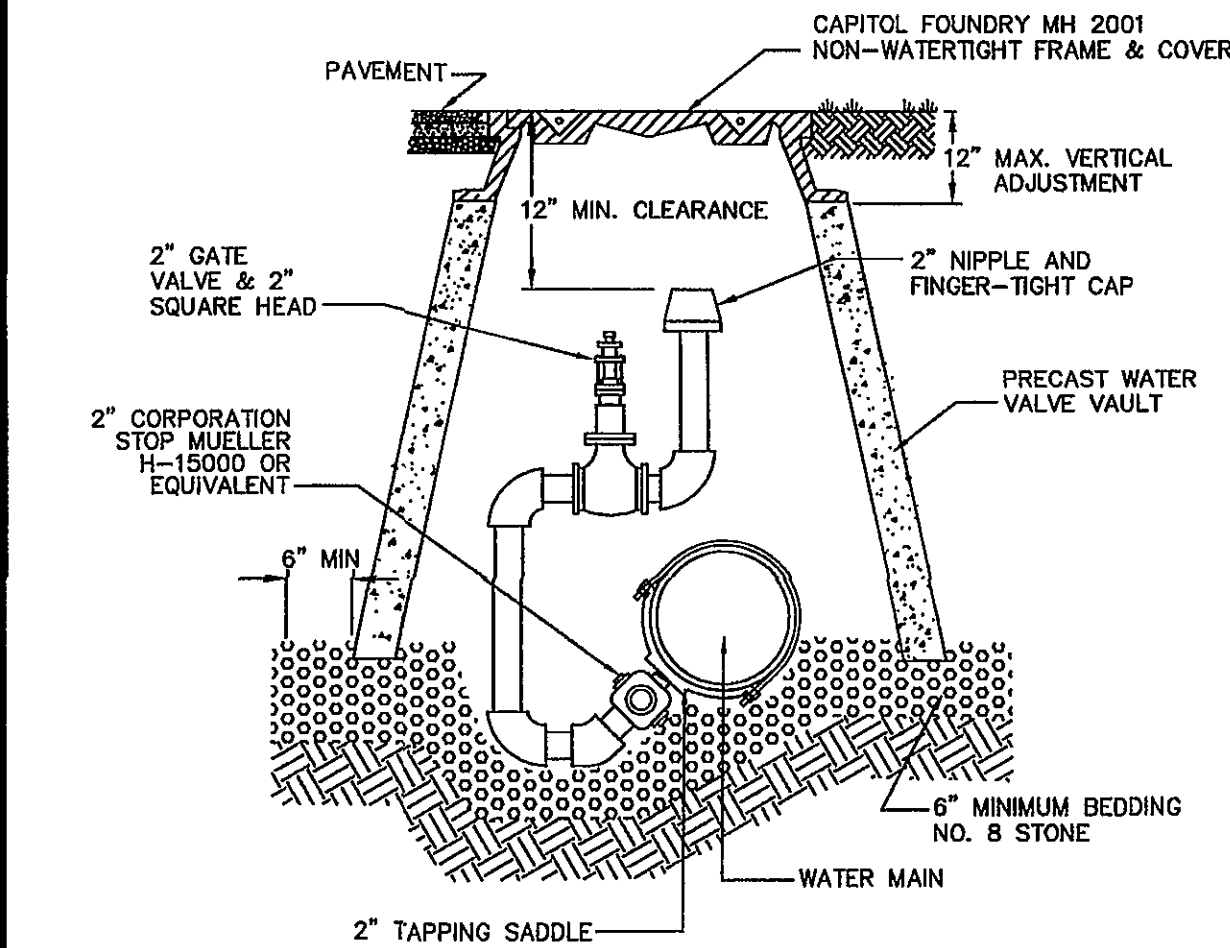
W-04

WATERLINE VALVE
INSTALLATION

W-08

NOTES

1. FIRE HYDRANTS MAY BE USED AT LOWPOINTS IN PLACE OF BLOW-OFFS WHERE IT IS DEMONSTRATED THAT A MINIMUM FLUSHING VELOCITY OF 4 FT/S IS PROVIDED.



IN-LINE
BLOW-OFF ASSEMBLY

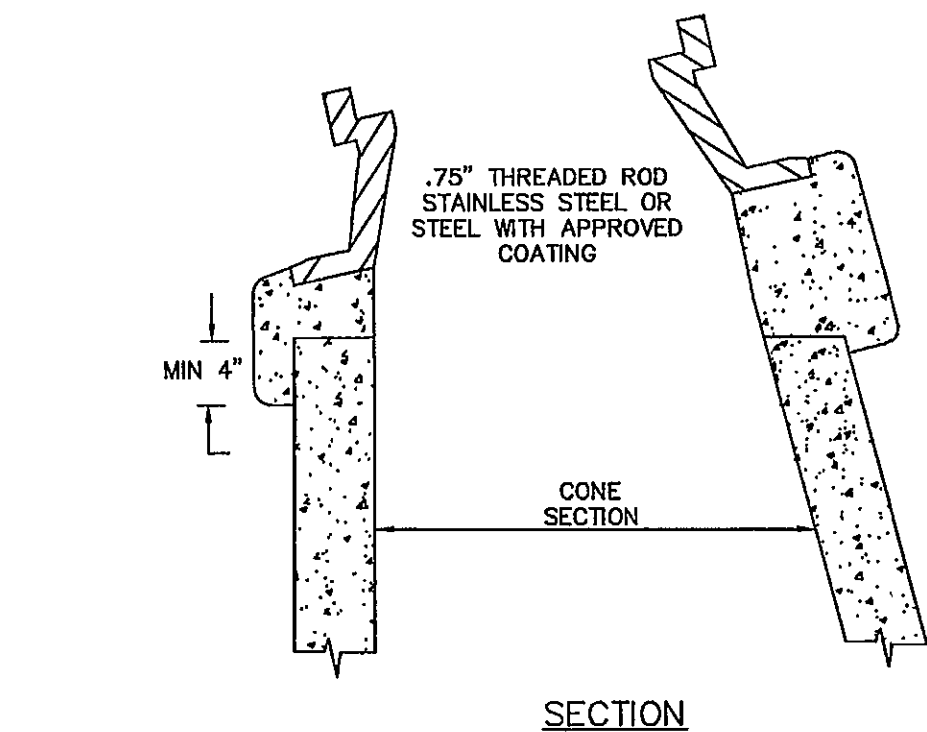
W-11

AUTOMATIC AIR
RELEASE ASSEMBLY

W-12

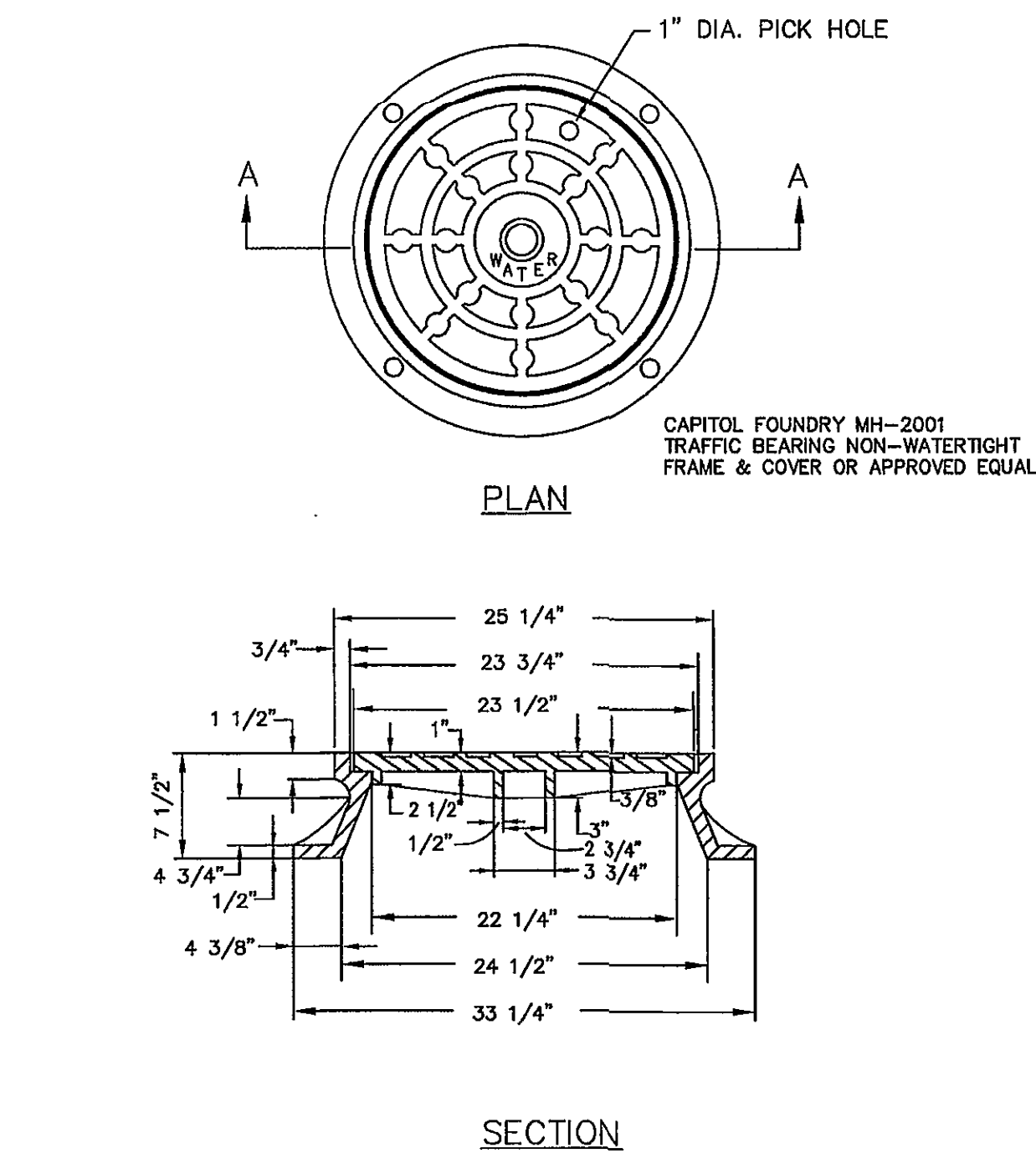
NOTES

1. USE MODERATELY STIFF MIX OF NON SHRINK CEMENT, SAND AND 1/2\"/>



INSTALLATION DETAIL FOR ALL
STANDARD FRAME AND COVERS

W-16

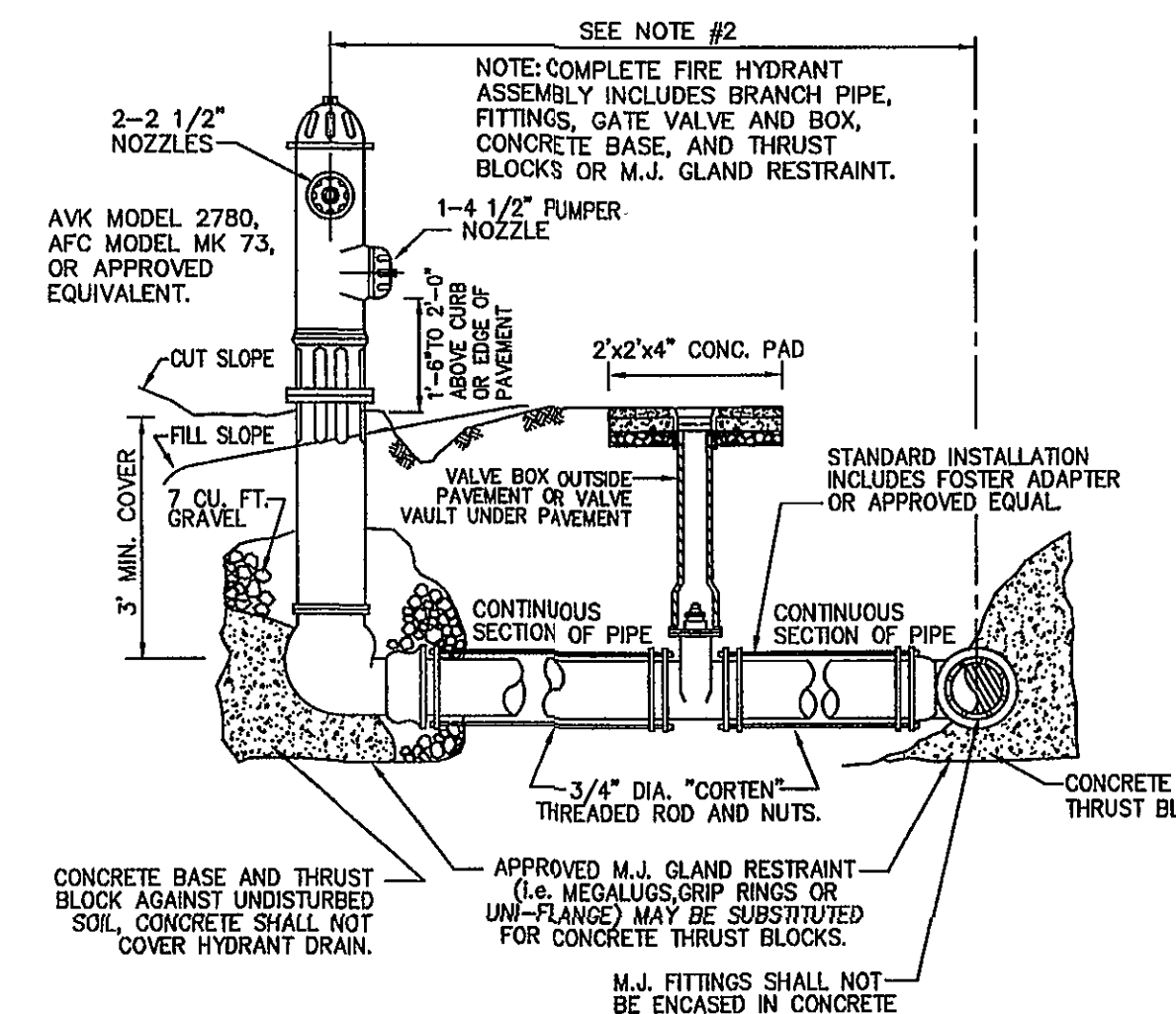


STANDARD MANHOLE
FRAME AND COVER

W-17

NOTES

1. MAIN BODY OF HYDRANT MUST BE PAINTED SILVER WITH RED REFLECTIVE CAPS AND BONNET.
2. FIRE HYDRANT SHALL BE INSTALLED 2' MIN. AND 4' MAX. FROM BACK OF CURB OR 6' MIN. AND 12' MAX. WHEN CURB IS NOT PRESENT. FIRE HYDRANT TO BE INSTALLED WITHIN RIGHT-OF-WAY OR EASEMENT LINE.
3. AREA AROUND HYDRANT AT A RADIUS OF 4' TO BE LEVEL AND UNOBSTRUCTED.
4. WATERPROOF BAGS SHALL BE PLACED OVER ALL NEWLY INSTALLED FIRE HYDRANTS.
5. HIGH PRESSURE (OVER 120 PSI) REQUIRES THE USE ALL 3 RESTRAINTS.

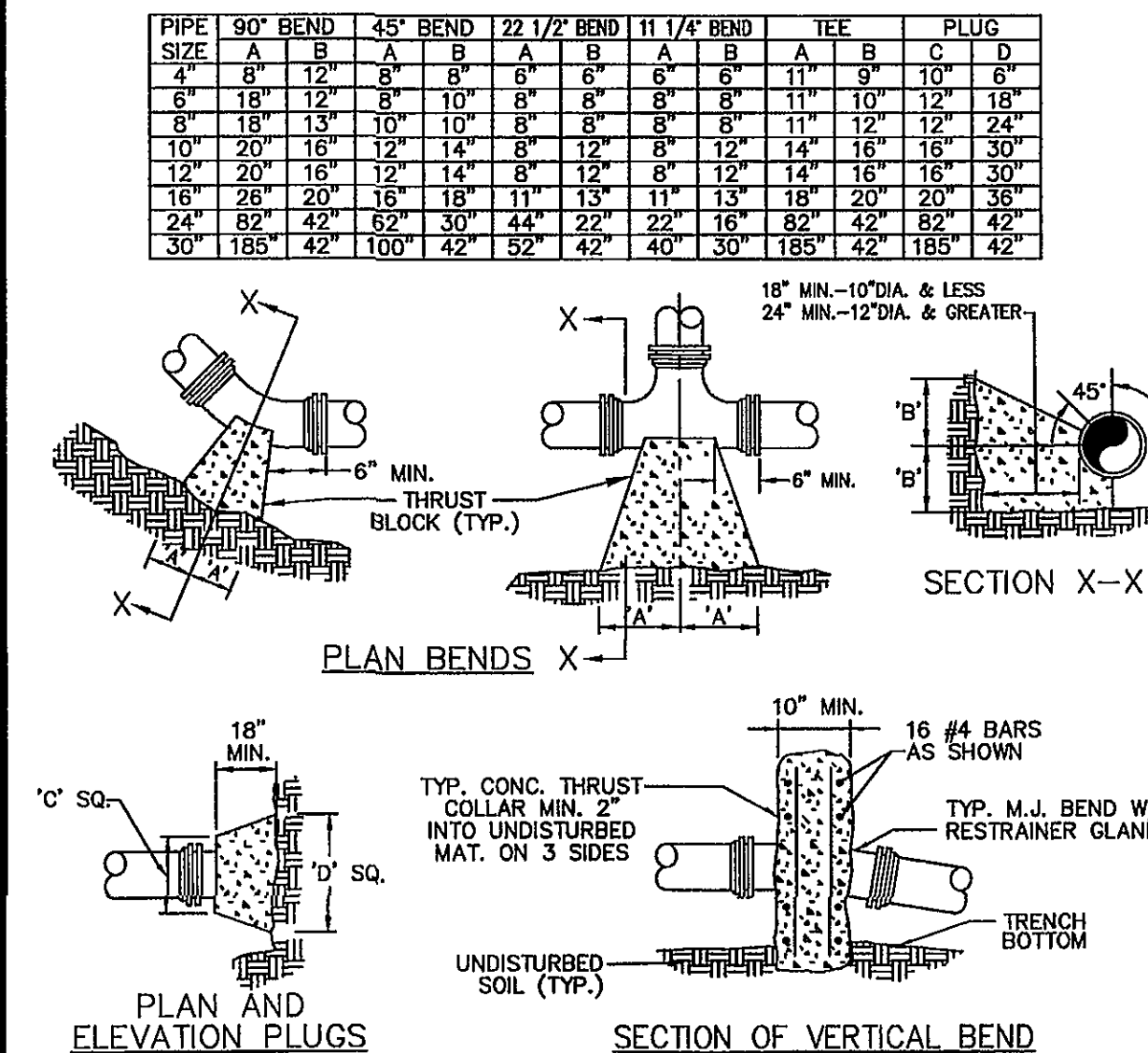


FIRE HYDRANT
ASSEMBLY

W-18

NOTES

1. FOR VERT. BEND DOWN IN EXCESS OF 11 1/4\"/>



THRUST BLOCK
CONSTRUCTION

W-19

WESTERN VIRGINIA
WATER AUTHORITY

REVISIONS			
No.	Date	Remarks	By

THE VILLAS AT RIVER OAKS

Designed:.....W.V.W.A.
Checked:.....W.V.W.A.
Date:.....March 20, 2005
Scale:.....No Scale
W.Q. #.....01-0080

SANITARY SEWER
& WATER DETAILS

SHEET
14
OF 14