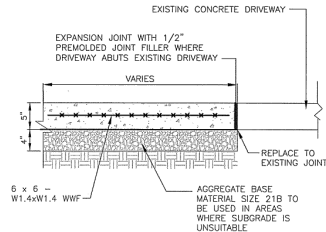


GENERAL NOTES:

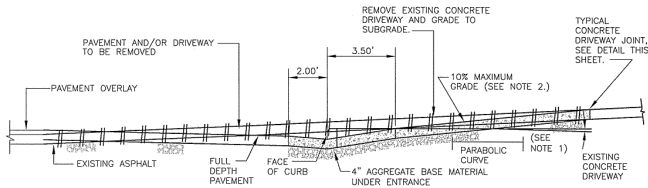
ALL DIMENSIONS SHOWN HEREON ARE TO THE BACK OF CURB OR FORM MIDDLE OF PIPE TO THE MIDDLE OF PIPE.

THE CONTRACTOR SHALL REPAIR ALL PAVEMENT DISTURBED AS A RESULT OF CONSTRUCTION OPERATIONS.

SANITARY SEWER CLEANOUTS AND LATERALS HAVE BEEN REPLACED FROM THE BUILDING TO THE BACK OF CURB AS PART OF WORK PERFORMED IN THE LATE '80'S. THE CONTRACTOR SHALL REPLACE ALL EXISTING LATERALS FROM THE MAIN AND CONNECT TO EXISTING LATERALS AT OR NEAR THE BACK OF CURB. REPLACE CLEANOUTS AT THE DIRECTION OF THE OWNER.



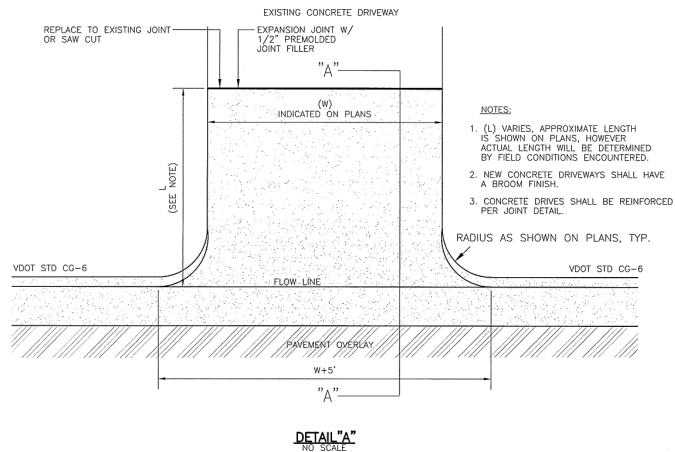
TYPICAL CONCRETE DRIVEWAY JOINT DETAIL



NOTES:

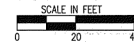
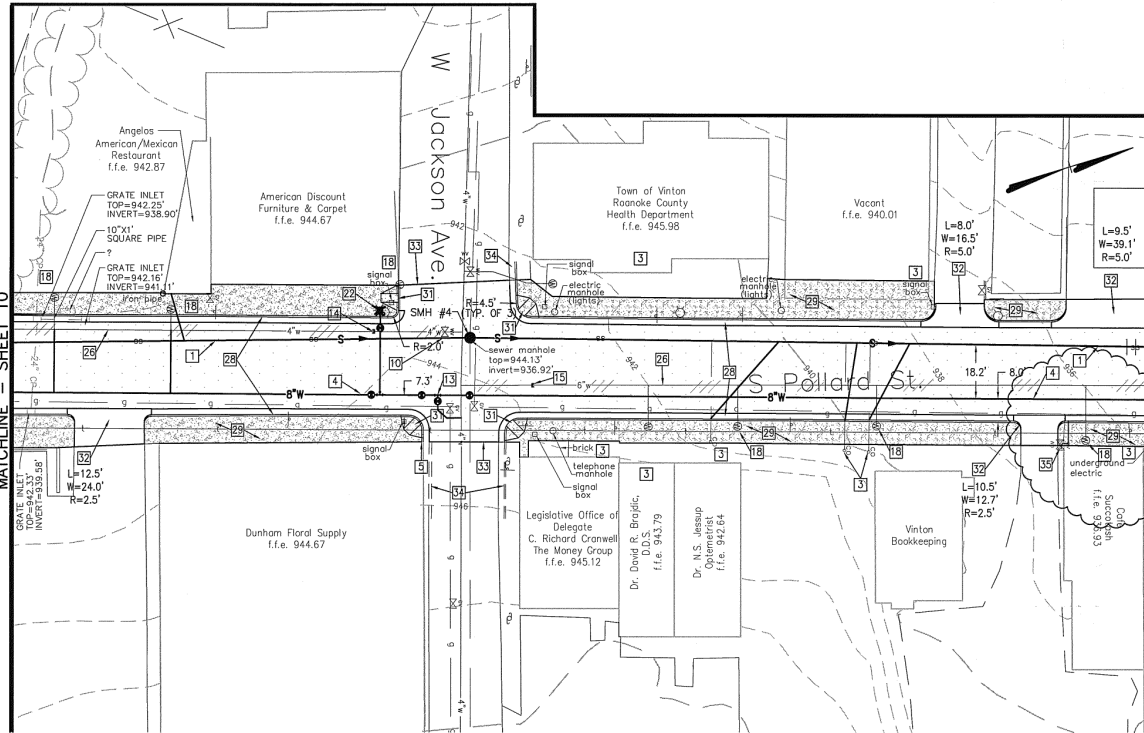
- 1) 3% MAXIMUM DECREASE IN SLOPE FOR FIRST 10 FOOT INTERVAL. 8% MAXIMUM DECREASE IN SLOPE FOR SUCCEEDING MINIMUM 10 FOOT INTERVALS.
- 2) IF SITE CONDITIONS DICTATE A GRADE GREATER THAN 10% THE CONTRACTOR SHALL OBTAIN ENGINEERS APPROVAL PRIOR TO INCREASING GRADE.

SECTION "A"-"A"



DETAIL "A"

MATCHLINE - SHEET 10



KEYNOTES:

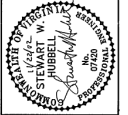
- 21 NOT USED
- 22 NEW FIRE HYDRANT, 6" VALVE, 6" PIPE AND 8"x6" TEE (REMOVE EXISTING HYDRANT, VALVE, ETC.)
- 23 NOT USED
- 24 NOT USED
- 25 NOT USED
- 26 REMOVE EXISTING WATERLINE WHEN IN CONFLICT WITH CONSTRUCTION OF SANITARY SEWER (FOR OPEN-CUT ALTERNATE). ABANDON EXISTING WATERLINE IN PLACE WHERE NO CONFLICT OCCURS WITH NEW CONSTRUCTION. PROVIDE APPROPRIATE PLUGS TO WATERLINE ABANDONED IN PLACE.
- 27 NOT USED
- 28 NEW VDOT STD. CG-6 CONCRETE CURB AND GUTTER. REFER TO DETAIL ON SHEET 6. CONTRACTOR SHALL INSTALL CURB AND GUTTER IN THE SAME LOCATION AS EXISTING AND ENSURE THAT RUNOFF DRAINS AWAY FROM ENTRANCES, AND BUILDINGS AND TOWARD EXISTING INLETS.
- 29 NEW CONCRETE SIDEWALK. SEE DETAIL ON SHEET 7 FOR TYPICAL SIDEWALK SECTION. CONTRACTOR SHALL CONSTRUCT SIDEWALK SUCH THAT RUNOFF IS DIRECTED TOWARD CURB AND GUTTER AND AWAY FROM BUILDINGS. CONTRACTOR SHALL INSTALL EXPANSION JOINT MATERIAL AROUND ALL EXISTING LIGHT POLES, WATER METERS & VALVE BOXES, GAS VALVES ETC... PRIOR TO POURING NEW SIDEWALKS.
- 30 NOT USED
- 31 NEW VDOT STD. CG-12 HANDICAP RAMP. SEE DETAIL ON SHEET 8.
- 32 NEW DRIVE AND DIMENSIONS AS SHOWN ON PLANS. SEE DETAIL ON SHEET 9.
- 33 LIMITS OF PAVEMENT PLANING AND OVERLAY. REFER TO TYPICAL SECTION-PAVEMENT OVERLAY ON SHEET 6.
- 34 EXISTING CURB AND GUTTER TO REMAIN
- 35 CONTRACTOR SHALL INSTALL 6" PLASTIC DRAIN LINE FROM TRENCH DRAIN AT THE S.W. CORNER OF THE SUCCOTASH CAFE FOR FUTURE CONNECTION. 6" PLASTIC PIPE SHALL EXTEND 1' BEYOND THE EDGE OF THE NEW SIDEWALK. THIS WORK WILL BE PAID FOR AS PART OF ROOF DRAIN SIDEWALK TRENCHES.

KEYNOTES:

- 1 NEW 8" SANITARY SEWER. REFER TO SHEET 12 FOR PROFILE AND ADDITIONAL INFORMATION. NOTE DRAWINGS ARE DRAWN FOR OPEN CUT ALTERNATE.
- 2 SHORT SIDE SEWER LATERAL - REPLACE WITH NEW PIPE AND FITTING
- 3 LONG SIDE SEWER LATERAL - REPLACE WITH NEW PIPE AND FITTING
- 4 NEW 8" WATERLINE. REFER TO SHEET 14 FOR PROFILE AND ADDITIONAL INFORMATION.
- 5 NOT USED
- 6 NOT USED
- 7 NOT USED
- 8 NOT USED
- 9 NOT USED
- 10 NOT USED
- 11 8"x6" TEE
- 12 6"x4" TEE
- 13 8"x4" TEE AND VALVES
- 14 4" RESTRAINED PLUG(S)
- 15 6" RESTRAINED PLUG(S)
- 16 NOT USED
- 17 NOT USED
- 18 CONNECT WATER SERVICE TO NEW PIPE
- 19 NOT USED
- 20 NOT USED

RECORD DRAWINGS

11-21-02



Revisions	Date
1. REVISION #1	9/7/02
2. RECORD DRAWINGS	11/21/02

Issue Date:	Aug. 19, 2001
Drawn By:	JPR
Designed By:	JPR
Checked By:	SMH
Date:	Aug. 17, 2001

Mattem & Craig
CONSULTING ENGINEERS • SURVEYORS
701 FIRST STREET, S.W.
ROANOKE, VIRGINIA 24016
TEL: (540) 345-7971
FAX: (540) 345-7971

DOWNTOWN IMPROVEMENTS
PLAN - POLLARD STREET
IMPROVEMENTS
TOWN OF VINTON, VIRGINIA

Vertical Scale:	N/A
Horizontal Scale:	1"=20'
Commission Number:	1955B
Sheet No.:	9