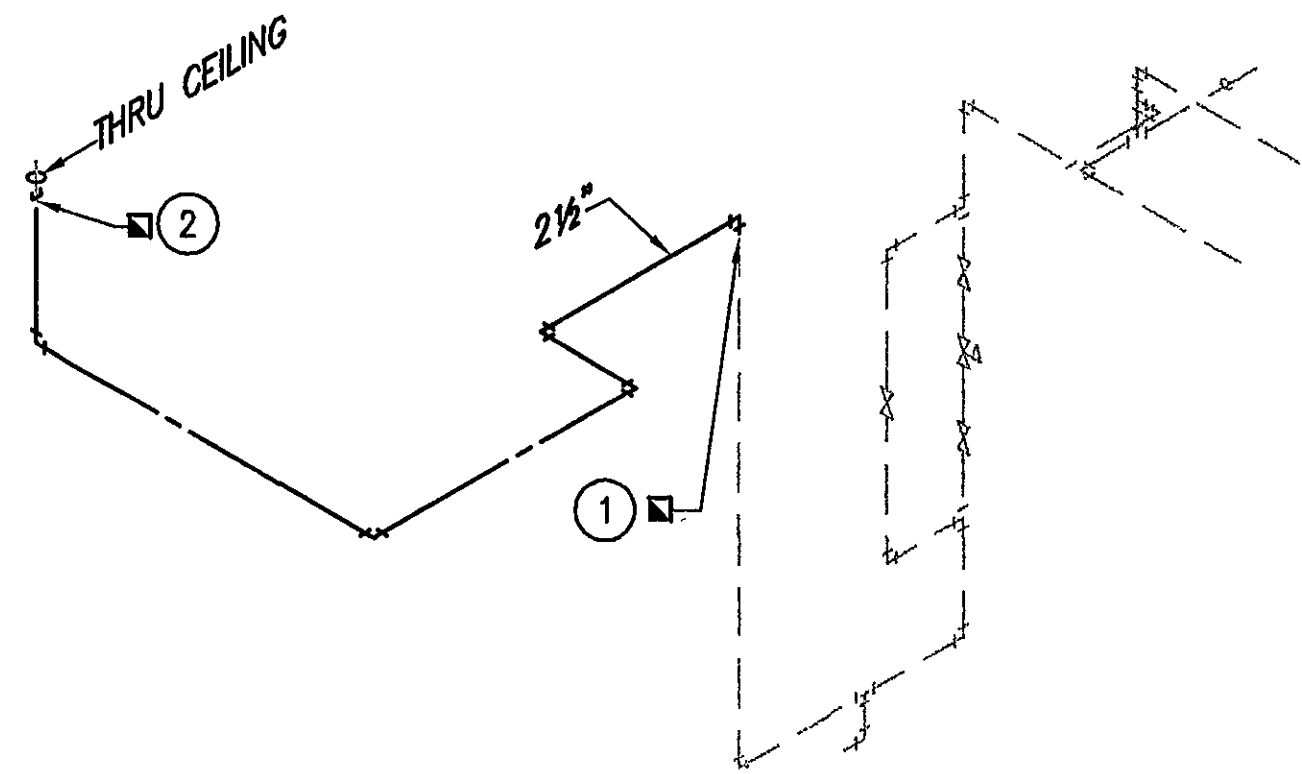
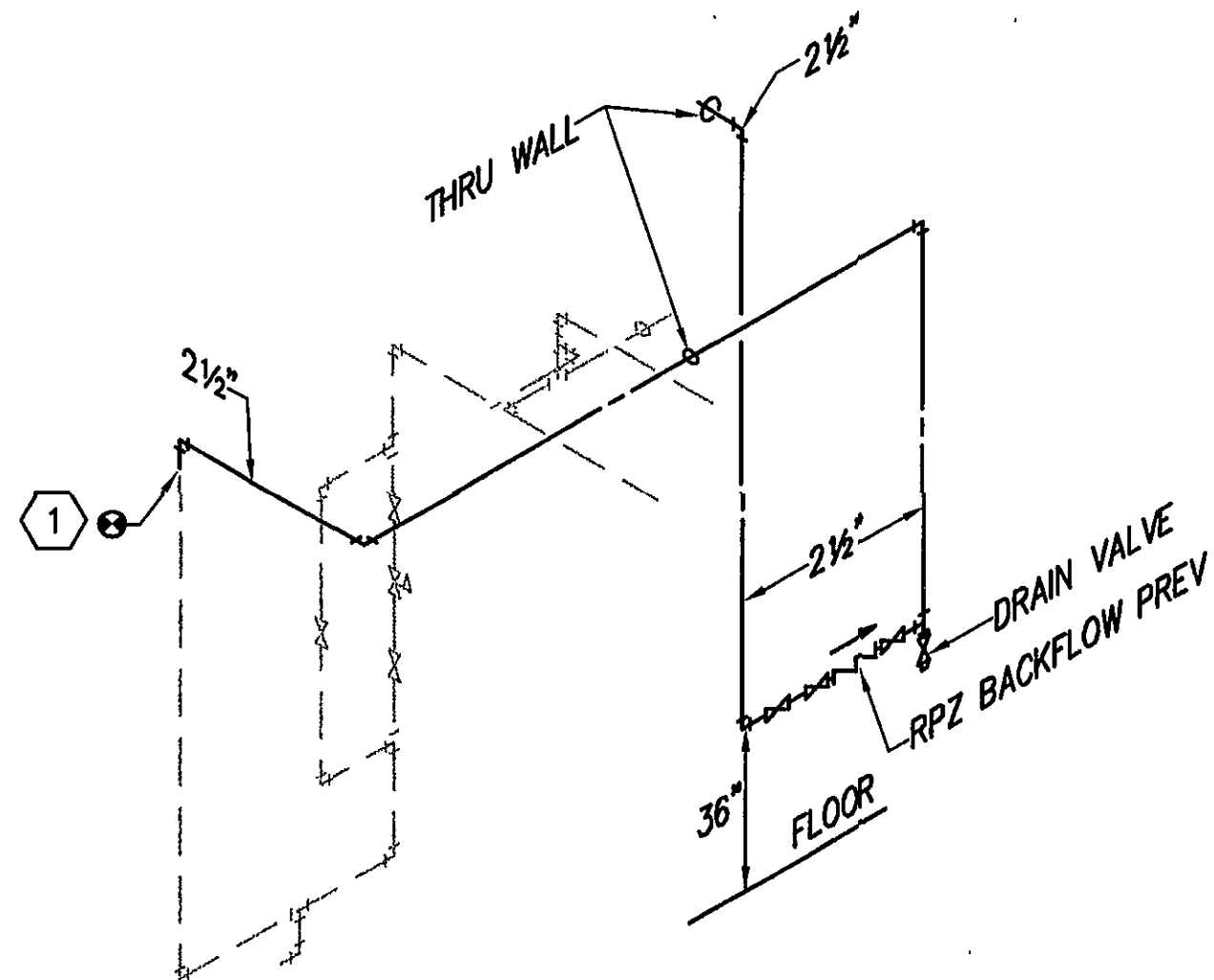


- ① DISCONNECT AND REMOVE EXISTING 4" PIPING AT ELL, AT CEILING.
② DISCONNECT PIPING AT CEILING, CAP REMAINING PIPING.

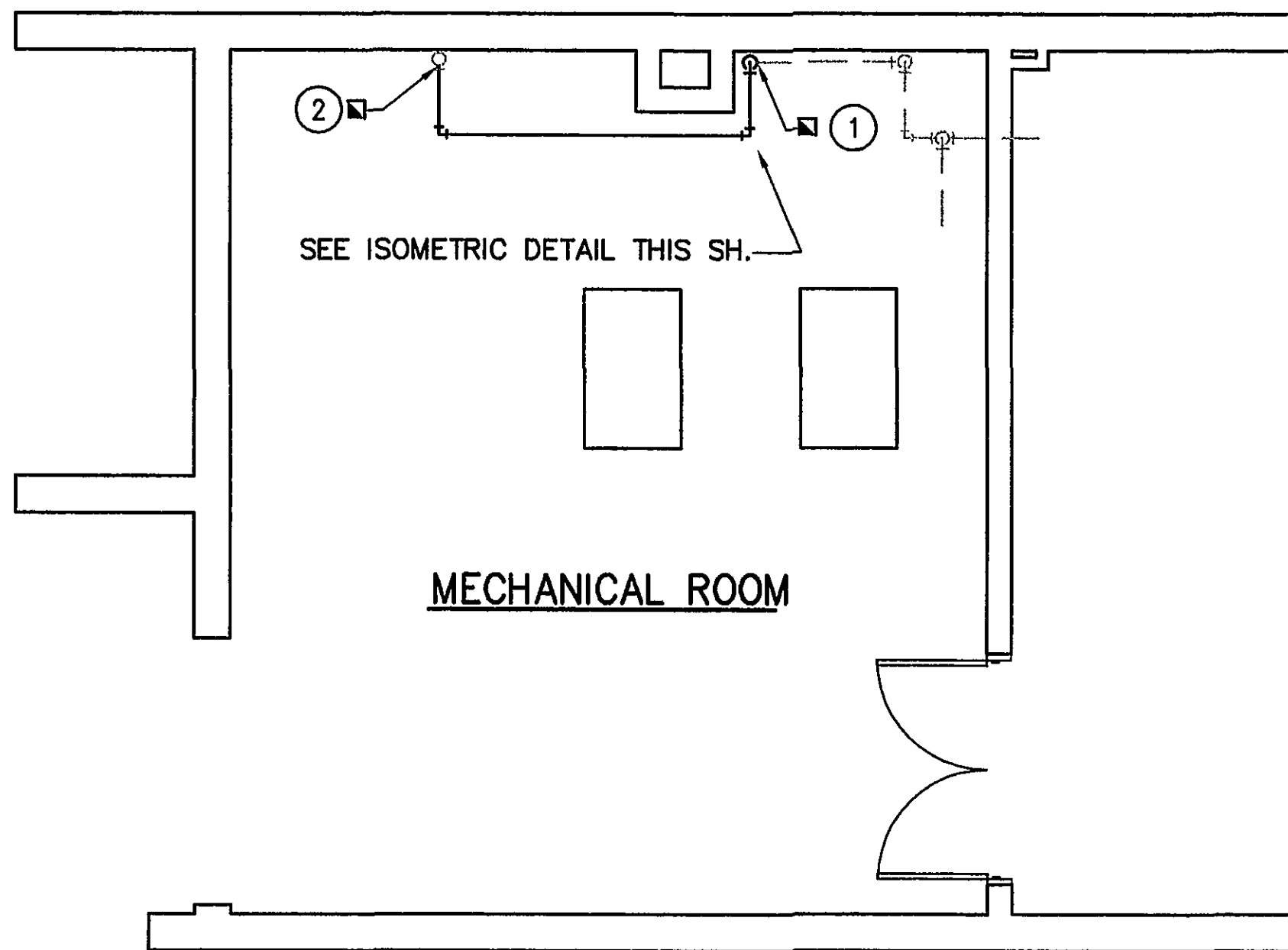


ISOMETRIC DETAIL
NO SCALE

- ① CONNECT TO EXISTING 2½" COLD WATER PIPING AT WALL NEAR CEILING.

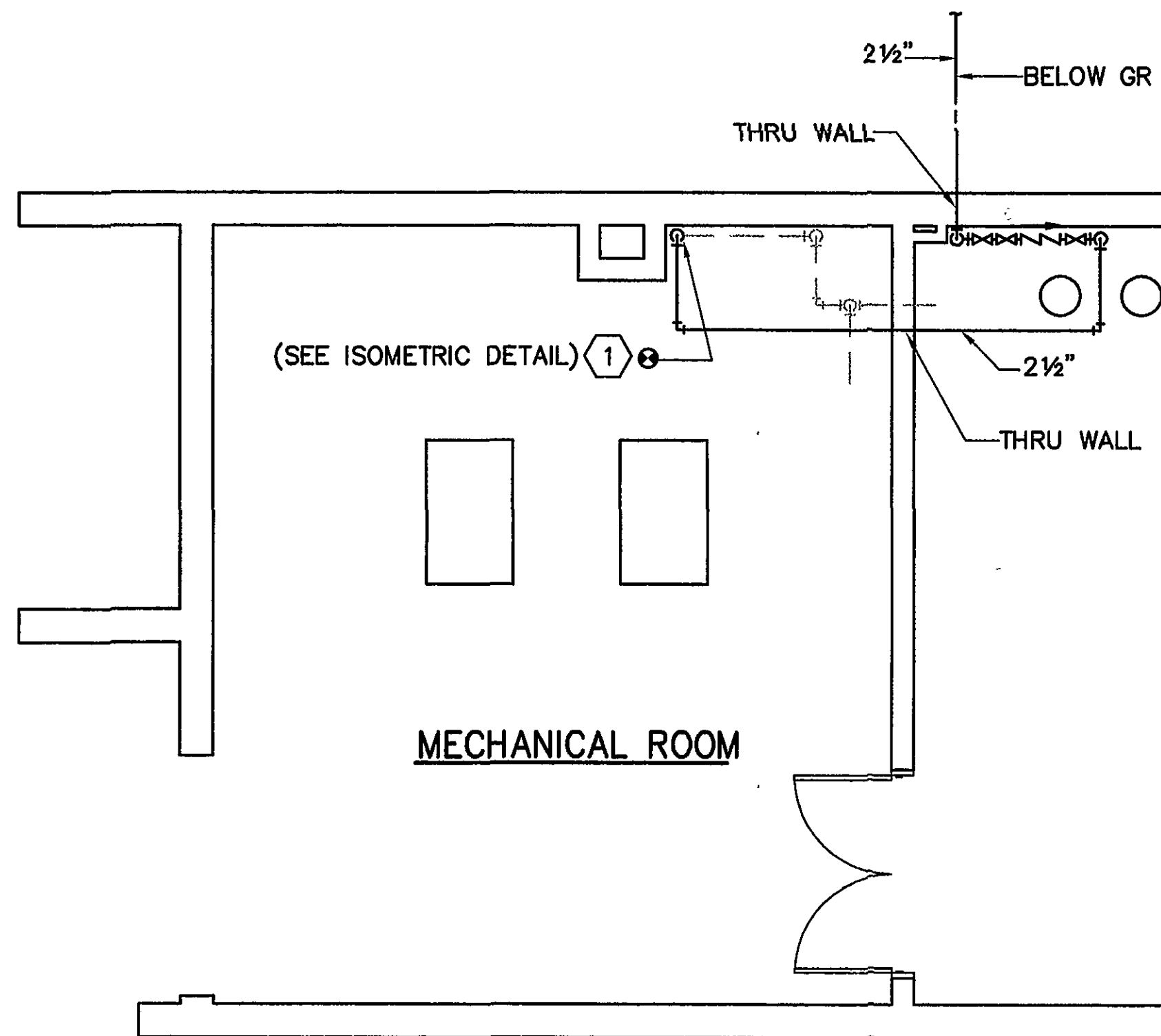


ISOMETRIC DETAIL
NO SCALE



MECHANICAL ROOM

DEMOLITION PLAN



MECHANICAL ROOM

NEW WORK PLAN

PLUMBING LEGEND

— D —	DRAIN LINE
— — —	COLD WATER PIPING (CW)
— FW —	FIRE WATER PIPING
— G —	GATE VALVE
— DV —	DRAIN VALVE (DV)
— 90° —	ELBOW 90°
— 90° UP —	ELBOW, 90° TURNED UP
— 90° DOWN —	ELBOW, 90° TURNED DOWN
— 45° —	ELBOW, 45°
— T —	TEE
— T OUT UP —	TEE, OUTLET TURNED UP
— T OUT DOWN —	TEE, OUTLET TURNED DOWN
— L —	LATERAL
— CAP —	CAP
— BP —	BACKFLOW PREVENTER
— PRV —	PRESSURE REDUCING VALVE
①	DEMOLITION NOTES
①	NEW WORK NOTES
— (NEW) —	POINT OF CONNECTION BETWEEN NEW AND EXISTING WORK (EXISTING PIPING, OR EQUIPMENT)
— (NEW) —	(NEW PIPING, OR EQUIPMENT)
— (EXIST) —	POINT OF DISCONNECTION OF EXISTING PIPING, OR EQUIPMENT (EXISTING PIPING, OR EQUIPMENT TO REMAIN)
— (EXIST) —	(EXISTING PIPING, OR EQUIPMENT TO BE REMOVED)

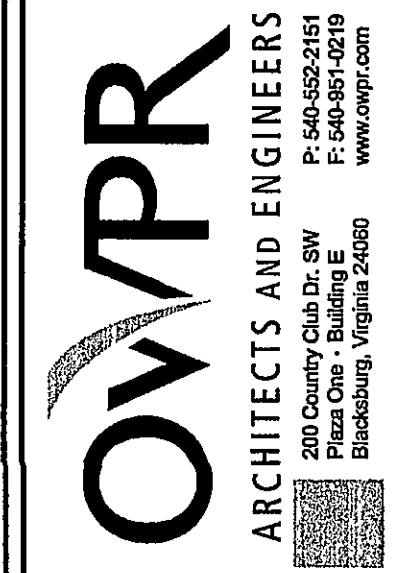
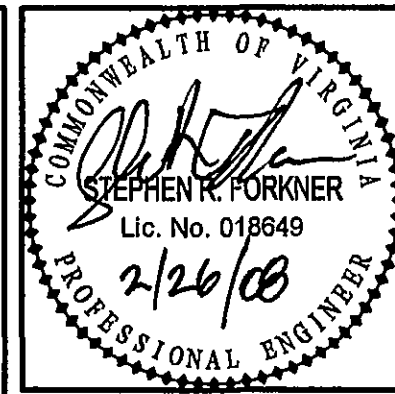
GENERAL DEMOLITION NOTES

- THESE DRAWINGS HAVE BEEN DEVELOPED FROM RECORD DRAWINGS AND MAY NOT REFLECT EXISTING FIELD CONDITIONS. THE CONTRACTOR SHALL VERIFY THESE DRAWINGS WITH THE FIELD CONDITIONS AND SHALL NOTIFY THE ARCHITECT IN WRITING OF ANY INCONSISTENCIES BETWEEN THESE DRAWINGS AND ACTUAL CONDITIONS.
- THE CONTRACTOR SHALL ALSO NOTIFY THE ARCHITECT IN WRITING IF ANY WORK DESCRIBED IN THE CONTRACT DOCUMENTS CAN NOT BE PERFORMED DUE TO EXISTING FIELD CONDITIONS, EVEN THOUGH THE EXISTING CONDITIONS ARE DRAWN CORRECTLY ON THE DRAWINGS.
- IF ANY EXISTING FIREPROOFING OR FIRE ASSEMBLIES ARE DAMAGED DURING DEMOLITION, THEY SHALL BE REPAIRED TO MEET ORIGINAL FIRE PROTECTION REQUIREMENTS.
- REMOVE EXISTING CONSTRUCTION AS SHOWN. REPAIR ALL THRU WALL PIPE PENETRATIONS ABOVE AND BELOW GRADE. ALL PENETRATIONS TO BE WITERTIGHT AND REPAIRS SHALL MEET ORIGINAL AESTHETICS, FIRE PROTECTION AND STRUCTURAL REQUIREMENTS.
- IN AREAS OF WORK THAT OCCUR ABOVE THE CEILING, THE GENERAL CONTRACTOR SHALL REMOVE THE EXISTING CEILING TILES AND STORE FOR REINSTALLATION. ANY CEILING TILES STAINED OR DAMAGED DURING REMOVAL, STORAGE OR REINSTALLATION SHALL BE REPLACED.

1/4" = 1'-0"



△		
△		
No.	Description	Date
Revisions		



WCC - WATER LINE
IMPROVEMENTS
PC# 260-05260-033

VIRGINIA

ROANOKE

Comm. No.
0473

Date
20 FEB 08

Designed: RLW
Drawn: RLW
Checked: SRF
Approved:

BUSINESS/SCIENCE BLDG
PLUMBING PLANS

P1.1