

Revisions	Date

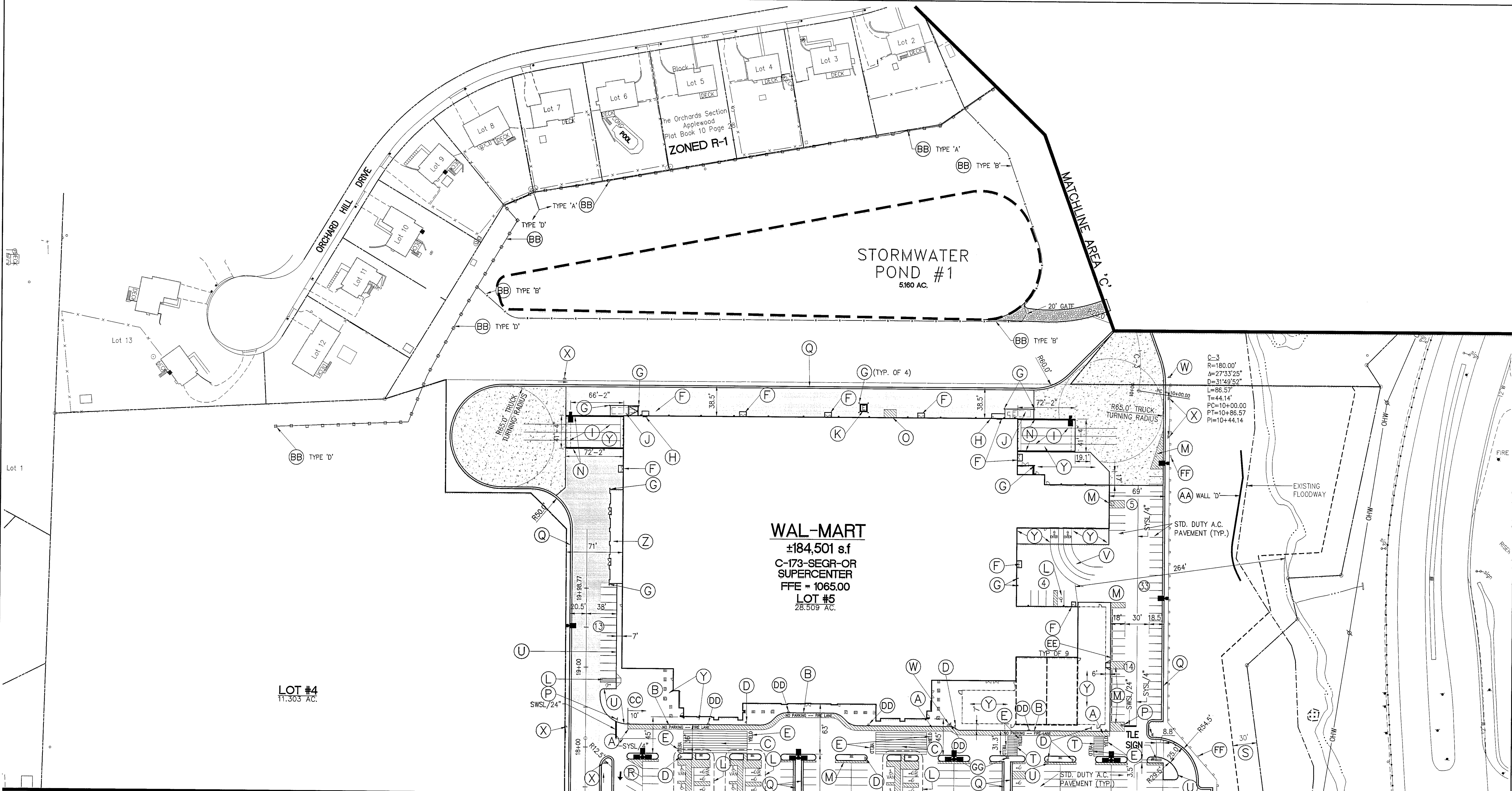
Commission No.: 1823	Drawn By: JPR	Checked By: WTA	Date: 9/28/01	Project Coordinator: WTA
----------------------	---------------	-----------------	---------------	--------------------------

Mattem & Craig
CONSULTING ENGINEERS • SURVEYORS
701 FIRST STREET
ROANOKE, VIRGINIA 24002
(540) 345-3442
FAX (540) 346-7881

WAL-MART STORE #3243-00
SITE PLAN
AREA 'B'
ROANOKE COUNTY, VIRGINIA

Vertical Scale:	N/A
Horizontal Scale:	1"=50'
Issue Date:	9/28/01
Sheet No.:	C-2

C-2



SITE KEYNOTES:

- (A) 6" WIDE FIRE LANE WITH 6" WIDE PAINTED TRAFFIC YELLOW STRIPING AT 45° TYPICAL, 2' O.C. CURB TO BE PAINTED TRAFFIC YELLOW AT THESE LOCATIONS.
- (B) "NO PARKING-FIRE LANE" PAINTED TRAFFIC YELLOW ON PAVEMENT AT 80' O.C. LETTERS TO BE A MINIMUM 2'-0" TALL.
- (C) PEDESTRIAN CROSSWALK WITH 4" WIDE PAINTED YELLOW STRIPING PARALLEL TO DIRECTION OF TRAFFIC AT 2'-0" O.C. UNLESS NOTED OTHERWISE. SEE SITE PLAN FOR WIDTH.
- (D) PEDESTRIAN CROSSING SIGN W10-2 AND W10-2P TYPICAL AT PEDESTRIAN CROSSWALKS AS NOTED ON PLANS. REFER TO SHEET C-31 FOR SIGN DETAIL.
- (E) "YIELD" PAINTED YELLOW ON PAVEMENT TYPICAL. SEE DETAIL SHEET C-29.
- (F) EXIT PORCH BY G.C. SEE ARCHITECTURAL PLANS FOR EXACT SIZE, LOCATION FOR STOOPS, STAIRS AND/OR RAMPS THAT MAY BE REQUIRED. RAMP PAVEMENT FLUSH WITH THE TOP OF STOOP.
- (G) 6" PIPE BOLLARD TYPICAL UNLESS NOTED OTHERWISE. REFER TO SHEET C-31 FOR DETAILS.
- (H) AT GRADE OVERHEAD DOOR LOCATION. SEE ARCHITECTURAL PLANS FOR EXACT SIZE AND LOCATION FOR COORDINATION WITH CIVIL PLANS.
- (I) 4" WIDE x 120' LONG YELLOW PAINTED TRUCK ALIGNMENT STRIPES.
- (J) 12'x36" CONCRETE COMPACTOR PAD BY G.C. REFER TO ARCHITECTURAL PLAN FOR EXACT LOCATION AND SLOPE.
- (K) CONCRETE TRANSFORMER PAD BY SITE CONTRACTOR. COORDINATE WITH LOCAL POWER COMPANY FOR DETAILS.
- (L) ACCESSIBLE PARKING SPACE TYPICAL. SEE DETAIL SHEET C-30 FOR ACCESSIBLE PARKING SPACE SIZE, SIGN AND SYMBOL ("VAN"-INDICATES VAN ACCESSIBLE SPACE).
- (M) PAINTED ISLAND TYPICAL UNLESS NOTED OTHERWISE. STRIPES SHALL BE PAINTED SYSL/4" AT 2'-0" O.C. PERPENDICULAR TO THE PARKING SPACE. SEE DETAIL SHEET C-30.
- (N) TRUCK WELL RETAINING WALL. REFER TO BUILDING PLANS FOR ADDITIONAL INFORMATION.
- (O) 10' x 15' STRIPED AREA PAINTED SYSL/4" AT 45° @ 2'-0" O.C. AT JIB CRANE LOCATION. COORDINATE WITH ARCH. PLANS FOR LOCATION. "STOP" SIGN. SEE DETAIL SHEET C-31.
- (P) VDOT STD. CG-6 CONCRETE CURB AND GUTTER, (TYPICAL).
- (R) PAINTED DIRECTIONAL ARROW (TYPICAL) - SEE DETAIL SHEET C-29.
- (S) BUILDING SETBACK LINE PER ZONING ORDINANCE.
- (T) 12'-0" WIDE PAINTED YELLOW CROSSWALK WITH 4" PAINTED YELLOW STRIPING 2'-0" O.C. PARALLEL TO THE DIRECTION OF TRAFFIC.
- (U) VDOT STD. CG-2 CONCRETE CURB, TYP. AT RAISED ISLANDS. SHEET C-28 FOR DETAIL.
- (V) TLE STRIPING SEE DETAIL SHEET C-29.
- (W) "NO TRUCKS" SIGN. SEE DETAIL SHEET C-31.
- (X) "TRUCK ROUTE" SIGN. SEE PLAN FOR LOCATION. SEE DETAIL SHEET C-31.
- (Y) CONCRETE PAVING BY G.C. - REFER TO ARCHITECTURAL PLANS FOR DETAILS.
- (Z) COMPRESSOR PAD BY G.C. - REFER TO ARCHITECTURAL PLANS FOR DETAILS.
- (AA) NEW WALL - REFER TO SHEET C-19 FOR ELEVATION, AND SHEET C-20 FOR SECTIONS AND DETAILS.
- (BB) NEW FENCE REFER TO SHEET C-30 FOR FENCE DETAILS.
- (CC) TRANSITION FROM FULL HEIGHT CURB TO FLUSH WITH PAVEMENT. SEE PLAN FOR LENGTH OF TRANSITION REFER TO SHEET C-8 FOR DETAILED SPOT ELEVATIONS.
- (DD) "NO PARKING-FIRE LANE" SIGN. LOCATE (1) SIGN AT EACH END OF FIRE LANE AND (1) EACH 100' BETWEEN.
- (EE) PRECAST CONCRETE WHEEL STOP.
- (FF) GUARD RAIL (VDOT STD. GR-2).
- (GG) AISLE SIGN, TYP. OF 11. REFER TO 28 | C-30 FOR DETAILS.

MATCHLINE AREA 'A'

SITE PLAN NOTES

- ALL WORK AND MATERIALS SHALL COMPLY WITH ALL ROANOKE COUNTY REGULATIONS AND CODES AND O.S.H.A. STANDARDS.
- CONTRACTOR SHALL REFER TO THE ARCHITECTURAL PLANS FOR EXACT LOCATIONS AND DIMENSIONS OF VESTIBULES, SLOPE PAVING, SIDEWALKS, EXIT PORCHES, TRUCK DOCKS, PRECISE BUILDING DIMENSIONS AND EXACT BUILDING UTILITY ENTRANCE LOCATIONS.
- ALL DISTURBED AREAS ARE TO RECEIVE FOUR INCHES OF TOPSOIL, SEED, MULCH AND WATER UNTIL A HEALTHY STAND OF GRASS IS ESTABLISHED.
- ALL ISLANDS WITH RAISED CURB SHALL BE LANDSCAPED IN ACCORDANCE WITH THE LANDSCAPE PLANS. THOSE ISLANDS ARE TO HAVE VDOT STD. CG-2 CURB. ALL REMAINING ISLANDS ARE TO BE STRIPED AS SHOWN.
- ALL CURBED RADII ARE TO BE 9.5' UNLESS OTHERWISE NOTED. STRIPED RADII ARE TO BE 4.5'.
- ALL DIMENSIONS AND RADII ARE TO THE BACK OF CURB UNLESS OTHERWISE NOTED.
- CONTRACTOR IS RESPONSIBLE FOR OBTAINING APPROVAL FROM THE POWER AND TELEPHONE COMPANIES FOR THE LOCATION AND HEIGHT OF THE PYLON SIGN BEFORE CONDUIT AND WIRING IS INSTALLED.
- EXISTING STRUCTURES WITHIN CONSTRUCTION LIMITS ARE TO BE ABANDONED, REMOVED OR RELOCATED AS NECESSARY. ALL COST SHALL BE INCLUDED IN BASE BID.
- CONTRACTOR SHALL BE RESPONSIBLE FOR ALL RELOCATIONS, INCLUDING BUT NOT LIMITED TO, ALL UTILITIES, STORM DRAINAGE, SIGNS, TRAFFIC SIGNALS & POLES, ETC. AS REQUIRED. ALL WORK SHALL BE IN ACCORDANCE WITH GOVERNING AUTHORITIES SPECIFICATIONS AND SHALL BE APPROVED BY SUCH. ALL COST SHALL BE INCLUDED IN BASE BID.
- SITE BOUNDARY, TOPOGRAPHY, UTILITY AND ROAD INFORMATION TAKEN FROM AN AERIAL SURVEY BY AIR SURVEY CORPORATION AND ADDITIONAL INFORMATION OBTAINED BY MATTEM AND CRAIG.
- TOTAL LAND AREA IS 56.153 ACRES. WAL-MART TRACT IS 28.509 ACRES.
- WETLANDS ARE PRESENT ON THIS SITE AS INDICATED BY "JURISDICTIONAL WATERS/ WETLANDS" REPORT PREPARED BY E.C.S., LTD, DATED 7/7/00.
- THE SITE WORK FOR THIS PROJECT SHALL BE PERFORMED IN ACCORDANCE WITH "THE WAL-MART STANDARD SITE WORK SPECIFICATIONS".
- THE FREESTANDING SIGN (PYLON) SHOWN ON PROPOSED LOT #5 (WAL-MART SITE) SHALL ONLY BE FOR THE ADVERTISEMENT OF BUSINESSES ON THIS PARCEL. ANY OFF PREMISE ADVERTISEMENT SHALL REQUIRE COMPLIANCE WITH ALL COUNTY AND VDOT OFF PREMISE ADVERTISING REQUIREMENTS. A MAXIMUM OF 5 BUSINESS SIGNS SHALL BE PERMITTED PER BUSINESS. THERE IS A MINIMUM SEPARATION DISTANCE OF 250 FEET B/W FREESTANDING ON PREMISE SIGNS. ALL C-2 SIGN REGULATIONS SHALL APPLY.
- REFER TO ARCH. PLANS FOR SITE LIGHTING AND ELECTRICAL PLANS.

PAVEMENT STRIPING LEGEND

- SWSL/4" - SINGLE WHITE SOLID LINE / 4" WIDE
- SYSL/4" - SINGLE YELLOW SOLID LINE / 4" WIDE EACH
- DYSL/4" - DOUBLE YELLOW SOLID LINE / 4" WIDE EACH
- SYSL/10" - SINGLE YELLOW SOLID LINE / 10" WIDE
- SWDL/4" - SINGLE WHITE DASHED LINE / 4" WIDE
- SWSL/24" - SINGLE WHITE SOLID LINE / 24" WIDE (STOP BAR- SEE DETAIL ON SHEET C-29)

LEGEND FOR PROPOSED IMPROVEMENTS

- PROPOSED BUILDING
- VDOT STD. CG-6 CONCRETE CURB AND GUTTER
- PROPOSED PARKING SPACES
- CART CORRAL
- HEAVY DUTY ASPHALTIC CONCRETE PAVEMENT REFER TO SHEET C-28
- HEAVY DUTY CONCRETE PAVEMENT REFER TO SHEET C-28
- STANDARD DUTY ASPHALTIC CONCRETE PAVEMENT REFER TO SHEET C-28

CONTRACTOR SHALL CONTACT GND CUTS @ 1-800-552-7001 FOR LOCATION OF ALL UTILITIES, AT LEAST 72 HOURS PRIOR TO BEGINNING CONSTRUCTION

