

EROSION & SEDIMENT CONTROL CONSTRUCTION SEQUENCE

GENERAL: THIS E&S WORK SEQUENCE HAS BEEN DEVELOPED TO MINIMIZE THE POTENTIAL FOR SEDIMENTATION OF ADJOINING STREAMS AND WATERWAYS DURING THE CONSTRUCTION OF THIS PROJECT AND TO ASSIST THE CONTRACTOR IN COMPLYING WITH LOCAL AND STATE EROSION AND SEDIMENT CONTROL LAWS. THIS SEQUENCE DOES NOT CONTAIN EVERY STEP NECESSARY TO ENSURE COMPLIANCE. THE CONTRACTOR SHALL TAKE ADDITIONAL STEPS, DEPENDING ON CONSTRUCTION METHODS AND MEANS EMPLOYED, TO ENSURE COMPLIANCE WITH SAID E&S LAWS.

1. OBTAIN / PICK-UP GRADING PERMIT FROM ROANOKE COUNTY.

2. CALL FOR E&S PRE-CONSTRUCTION CONFERENCE WITH ROANOKE COUNTY INSPECTION STAFF.

PHASE I:

3. BUILD CONSTRUCTION ENTRANCES (CE) #S 1 & 2. CE#1 SHALL BE CONSTRUCTED IN ACCORDANCE WITH THE LIGHT DUTY PAVEMENT DETAIL ON SHEET C-28. PROVIDE A 100' LONG, 12' WIDE TURN LANE AND A 50' TAPER. CONSTRUCTION ENTRANCE SHALL EXTEND NO LESS THAN 40' FROM EDGE OF 12' TEMPORARY TURN LANE. A TEMPORARY STONE CONSTRUCTION ENTRANCE SHALL BE CONSTRUCTED BEYOND THE PAVED CONSTRUCTION ENTRANCE IN ACCORDANCE WITH THE VESCH, LATEST EDITION.

4. CONSTRUCT TAPER AND LEFT TURN LANE IN EASTBOUND U.S. RTE. 460 FROM STATION 30+00 TO EXISTING CROSSOVER (STATION 33+00).

5. BEGIN CONSTRUCTION ON TEMPORARY SEDIMENT BASIN (TSB) #1 OUTFALL PIPE. CLEAR AND GRUB ONLY AS REQUIRED FOR CONSTRUCTION OF OUTFALL. PROVIDE INLET PROTECTION AS LINE IS BEING CONSTRUCTED. PLACE FILL AS NEEDED TO BUILD THE OUTFALL LINE. CONTROL SEDIMENT RUNOFF USING SILT FENCE (SF). CONSTRUCT OUTLET STRUCTURE AND SEDIMENT RISER.

6. PLACE SILT FENCE (SF) ALONG TOE OF EMBANKMENT OF TSB #1. CLEAR AND GRUB AREA OF EMBANKMENT AND TSB#1. BEGIN PLACEMENT OF FILL IN EMBANKMENT AND BOTTOM OF TSB #1. AS GRADE REACHES THE 1040 ELEVATION, DIVERT FLOW INTO THE SEDIMENT RISER. CONTINUE FILLING OPERATIONS UNTIL TSB#1 IS FULLY DEVELOPED.

7. CONSTRUCT DIVERSION DITCH (DD) LOCATED TO THE SOUTHEAST AND NORTH OF TSB#1.

8. CONSTRUCT TEMPORARY SEDIMENT TRAPS (TST) #S 1 & 7 AS SHOWN ON THE PLAN AND AS SPECIFIED ON SHEET C-16. CONSTRUCT DD AND SF AT EACH TST AND ALONG CRUMPACKER DRIVE AS SHOWN HEREON.

9. SEED DOWNSLOPE AREAS OF DD AND TST USING TEMPORARY SEED MIXTURE.

10. CALL FOR INSPECTION OF MEASURE. ADD MEASURES OR MODIFY CONSTRUCTED MEASURES AS REQUIRED TO ENSURE ACCEPTANCE / APPROVAL BY ROANOKE COUNTY INSPECTION STAFF.

11. BEGIN CLEARING AND GRUBBING OF PHASE I AREA. AS GRADES REACH THE FINISHED STAGES, REFER TO SHEETS C-11 THRU C-13 FOR OTHER TEMPORARY AND PERMANENT MEASURES. STAGE WORK TO ENSURE THAT MAXIMUM DRAINAGE AREA FOR ANY TST IS NOT EXCEEDED.

EROSION & SEDIMENT CONTROL CONSTRUCTION SEQUENCE (CONT'D)

PHASE II:

12. CONSTRUCT TEMPORARY SEDIMENT TRAPS (TST) #S 2, 3, 4, & 5 AS SHOWN ON THE PLAN AND AS SPECIFIED ON SHEET C-16. CONSTRUCT DD AND SF AT EACH TST AND ALONG CHALLENGER AVENUE AS SHOWN HEREON.

13. SEED DOWNSLOPE AREAS OF DD AND TST USING TEMPORARY SEED MIXTURE.

14. CALL FOR INSPECTION OF MEASURE. ADD MEASURES OR MODIFY CONSTRUCTED MEASURES AS REQUIRED TO ENSURE ACCEPTANCE / APPROVAL BY ROANOKE COUNTY INSPECTION STAFF.

15. BEGIN CLEARING AND GRUBBING OF PHASE II AREA. AS GRADES REACH THE FINISHED STAGES, REFER TO SHEETS C-11 THRU C-13 FOR OTHER TEMPORARY AND PERMANENT MEASURES. STAGE WORK TO ENSURE THAT MAXIMUM DRAINAGE AREA FOR ANY TST IS NOT EXCEEDED.

16. COORDINATE THE PLACEMENT OF TEMPORARY AND PERMANENT ESC MEASURES WITH UTILITY (GAS AND SANITARY SEWER) WORK ALONG COOK CREEK.

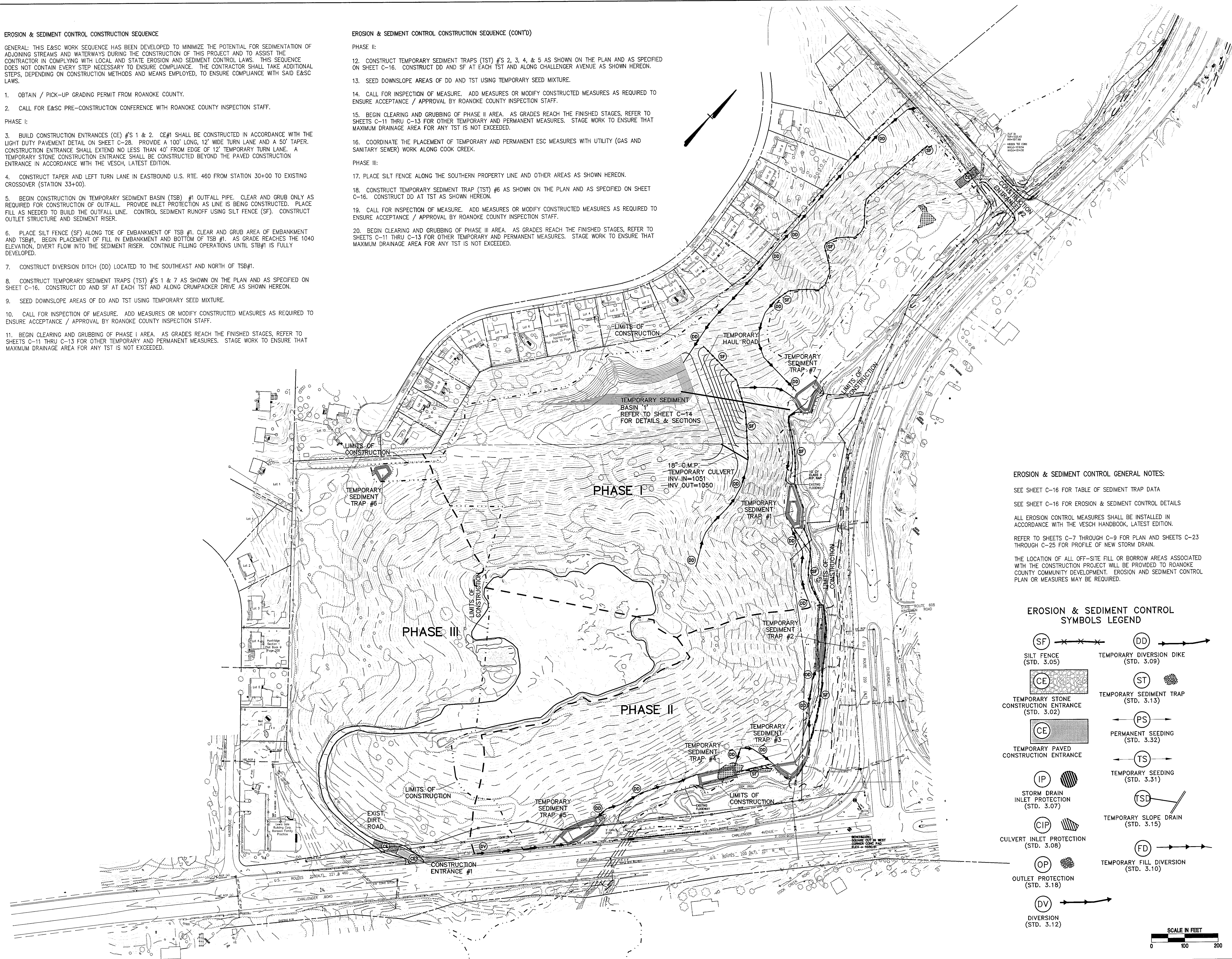
PHASE III:

17. PLACE SILT FENCE ALONG THE SOUTHERN PROPERTY LINE AND OTHER AREAS AS SHOWN HEREON.

18. CONSTRUCT TEMPORARY SEDIMENT TRAP (TST) #6 AS SHOWN ON THE PLAN AND AS SPECIFIED ON SHEET C-16. CONSTRUCT DD AT TST AS SHOWN HEREON.

19. CALL FOR INSPECTION OF MEASURE. ADD MEASURES OR MODIFY CONSTRUCTED MEASURES AS REQUIRED TO ENSURE ACCEPTANCE / APPROVAL BY ROANOKE COUNTY INSPECTION STAFF.

20. BEGIN CLEARING AND GRUBBING OF PHASE III AREA. AS GRADES REACH THE FINISHED STAGES, REFER TO SHEETS C-11 THRU C-13 FOR OTHER TEMPORARY AND PERMANENT MEASURES. STAGE WORK TO ENSURE THAT MAXIMUM DRAINAGE AREA FOR ANY TST IS NOT EXCEEDED.



EROSION & SEDIMENT CONTROL GENERAL NOTES:

SEE SHEET C-16 FOR TABLE OF SEDIMENT TRAP DATA

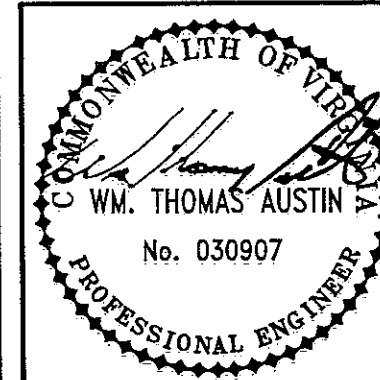
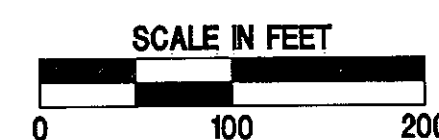
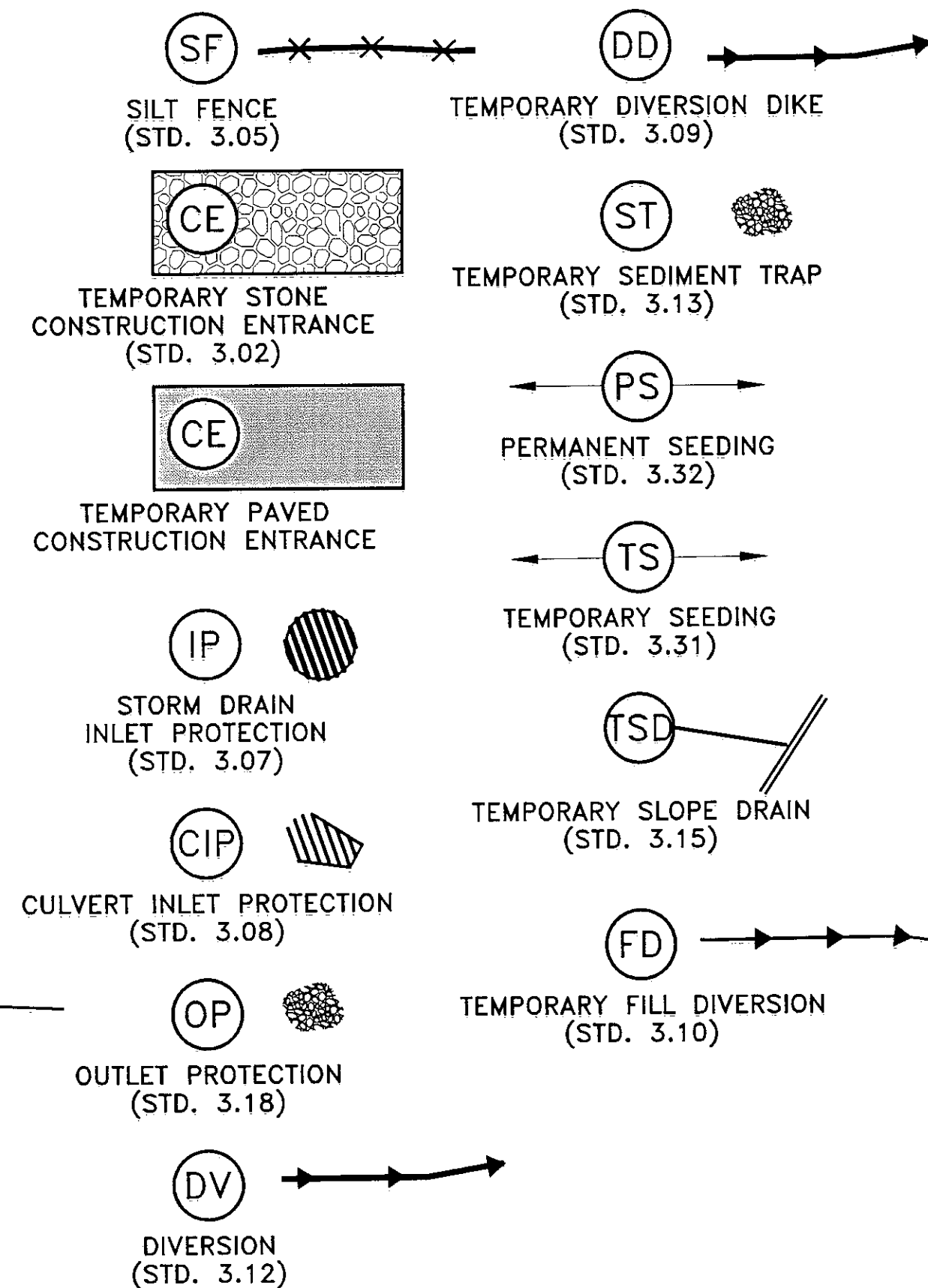
SEE SHEET C-16 FOR EROSION & SEDIMENT CONTROL DETAILS

ALL EROSION CONTROL MEASURES SHALL BE INSTALLED IN ACCORDANCE WITH THE VESCH HANDBOOK, LATEST EDITION.

REFER TO SHEETS C-7 THROUGH C-9 FOR PLAN AND SHEETS C-23 THROUGH C-25 FOR PROFILE OF NEW STORM DRAIN.

THE LOCATION OF ALL OFF-SITE FILL OR BORROW AREAS ASSOCIATED WITH THE CONSTRUCTION PROJECT WILL BE PROVIDED TO ROANOKE COUNTY COMMUNITY DEVELOPMENT. EROSION AND SEDIMENT CONTROL PLAN OR MEASURES MAY BE REQUIRED.

EROSION & SEDIMENT CONTROL SYMBOLS LEGEND



Date	
Revisions	

Commission No.: 1823	Drawn By: JPR	Checked By: WTA	Project Coordinator: WTA
		Date: 9/28/01	

Mattem & Craig
CONSULTING ENGINEERS • SURVEYORS
701 FIRST STREET
ROANOKE, VIRGINIA 24012
TEL: (540) 342-7000
FAX: (540) 342-7001

WAL-MART STORE #3243-00
OVERALL EROSION & SEDIMENT
CONTROL PLAN
ROANOKE COUNTY, VIRGINIA

Vertical Scale:
Horizontal Scale: 1"=100'
Issue Date: 9/28/01
Sheet No.:

C-10