

4' (NOTE 1) 4'

24" DEPTH, CLASS I RIP-RAP

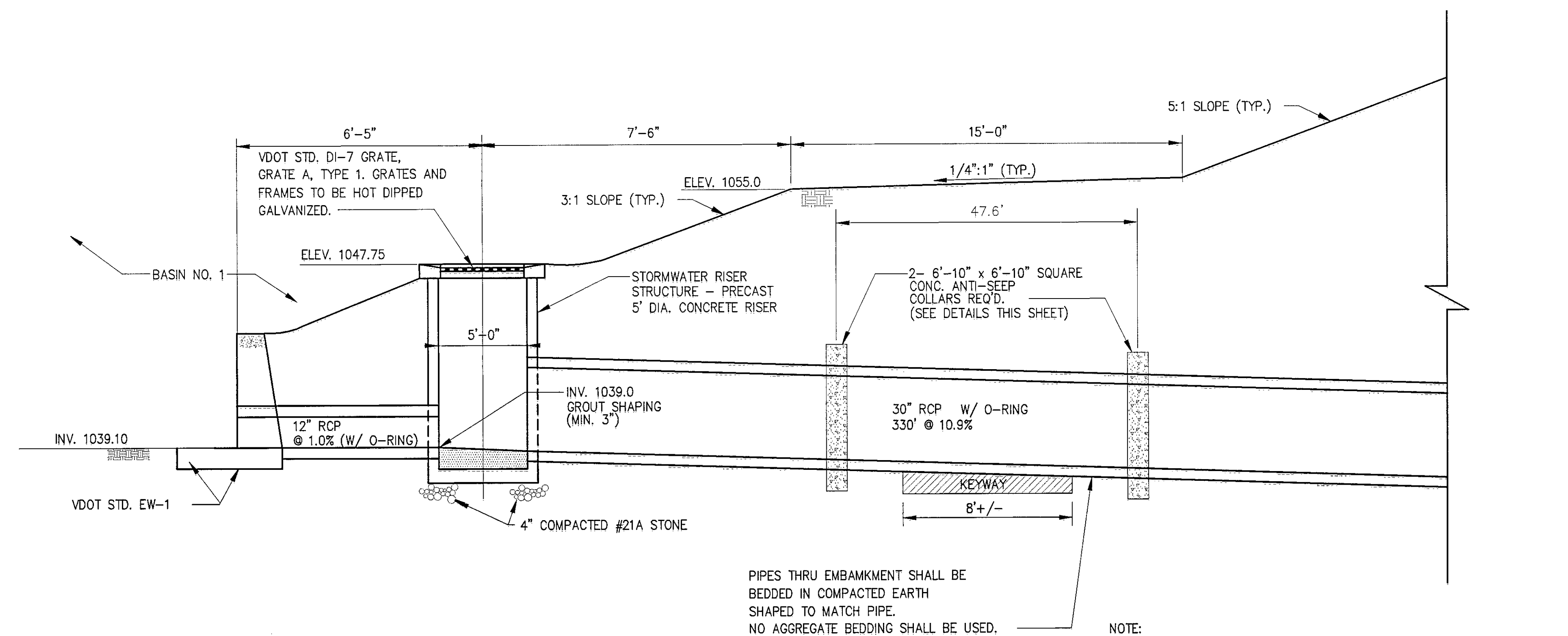
GEOTEXTILE FABRIC (TYP.)

SOUTH OF RECEIVING CHANNEL  
EW-1

MODIFIED VDOT STD. PG-2A, TYPE E  
TRANSITION SLOPE FROM FLAT AT  
EW-1 TO MATCH PG-2A

SECTION A-A

INLET STRUCTURE- DETENTION POND NO. 1  
NOT TO SCALE



DETENTION BASIN NO. 1  
OUTLET STRUCTURE SECTION  
NOT TO SCALE

NOTE:  
KEYWAYS SHALL BE EXCAVATED TO AT LEAST 1 FOOT INTO A STABLE IMPERVIOUS LAYER OF SOIL AND SHALL HAVE A MINIMUM DEPTH OF 2 FEET. KEYWAY SHALL THEN BE PROOF ROLLED AND INSPECTED BY THE ENGINEER. PRIOR TO BACKFILLING WITH SUITABLE MATERIAL, ENGINEER SHALL APPROVE THE COMPACTED SURFACE.