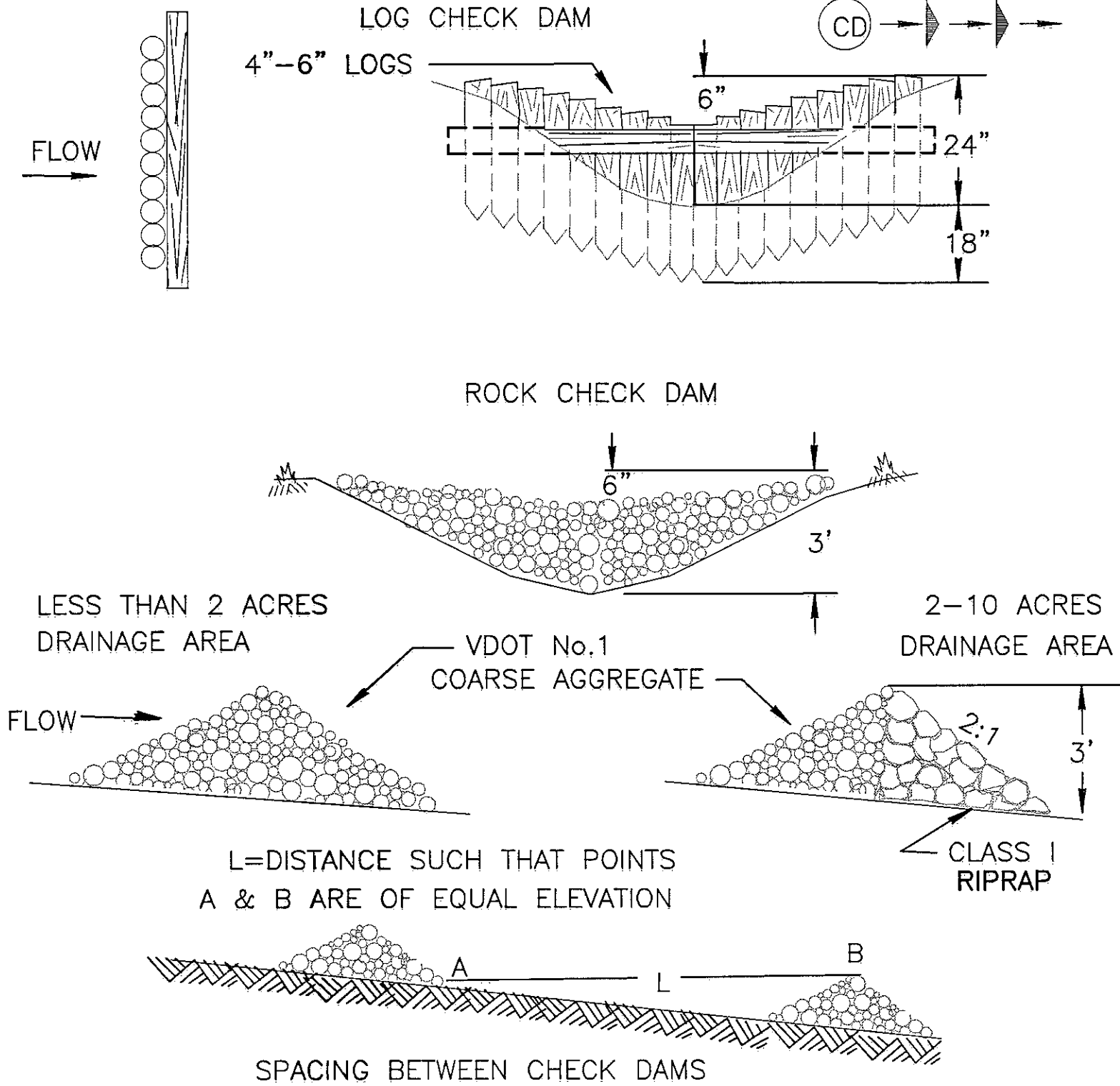


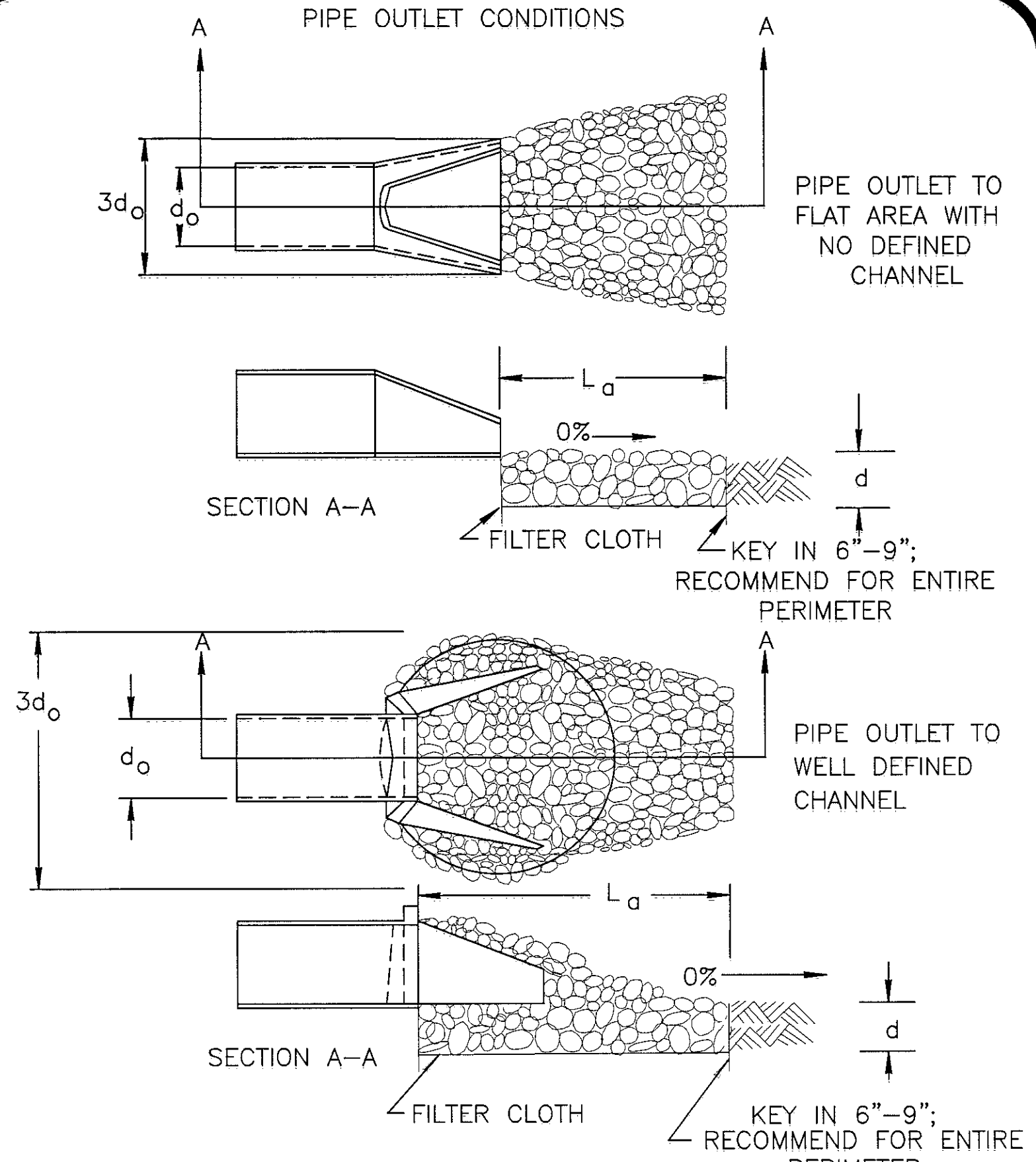
NOTE: THIS DETAIL IS FROM THE VIRGINIA EROSION AND SEDIMENT CONTROL HANDBOOK-1992. THE CONTRACTOR SHALL COMPLY WITH THE DESIGN CRITERIA, THE CONSTRUCTION SPECIFICATION, THE MAINTENANCE REQUIREMENTS AND THE REMOVAL REQUIREMENTS CONTAINED THEREIN FOR THIS ITEM.

**TEMPORARY SEDIMENT TRAP** **ST**



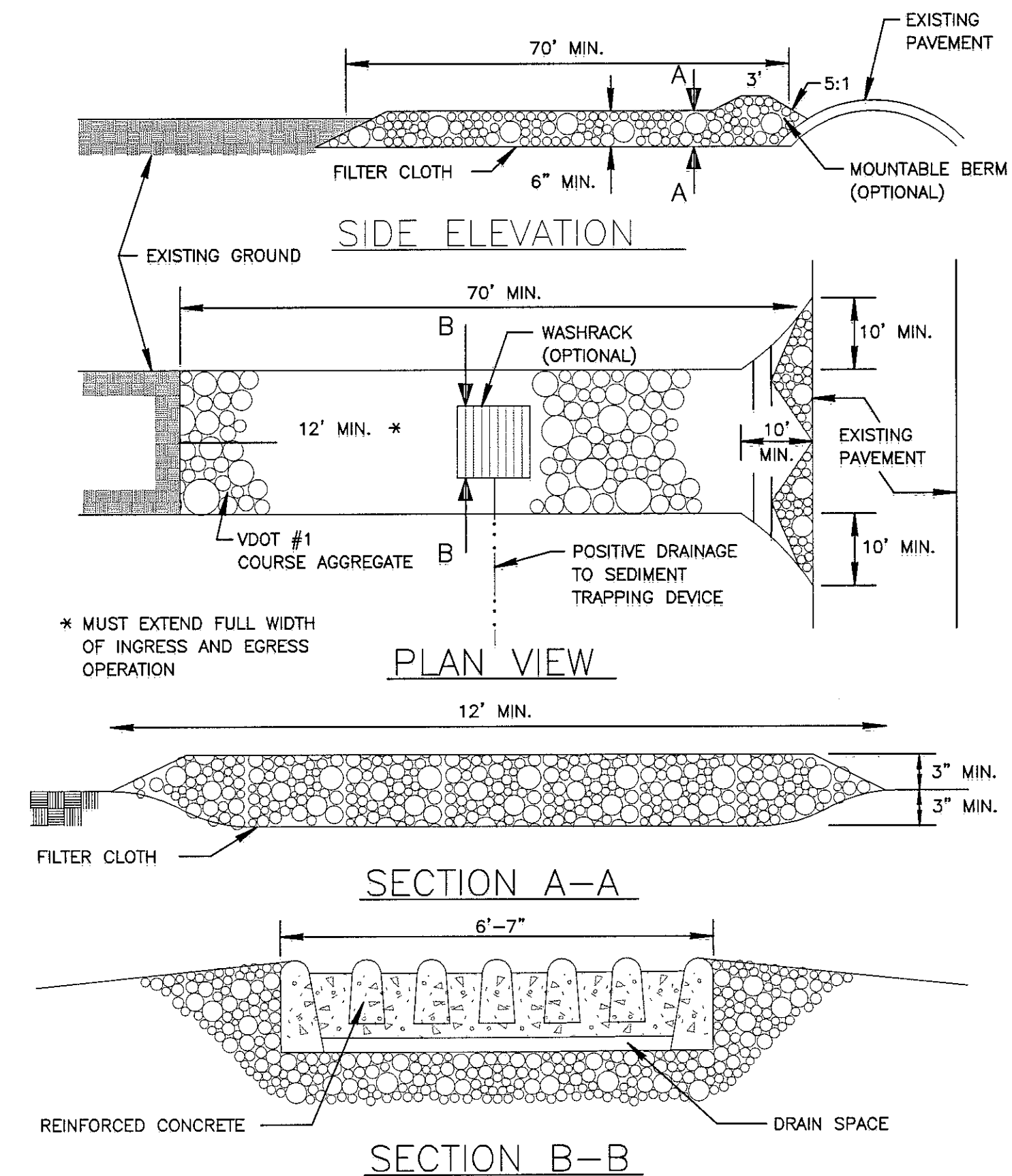
NOTE: THIS DETAIL IS FROM THE VIRGINIA EROSION AND SEDIMENT CONTROL HANDBOOK-1980. THE CONTRACTOR SHALL COMPLY WITH THE DESIGN CRITERIA, THE CONSTRUCTION SPECIFICATION, THE MAINTENANCE REQUIREMENTS AND THE REMOVAL REQUIREMENTS CONTAINED THEREIN FOR THIS ITEM.

**CHECK DAMS** **CD**

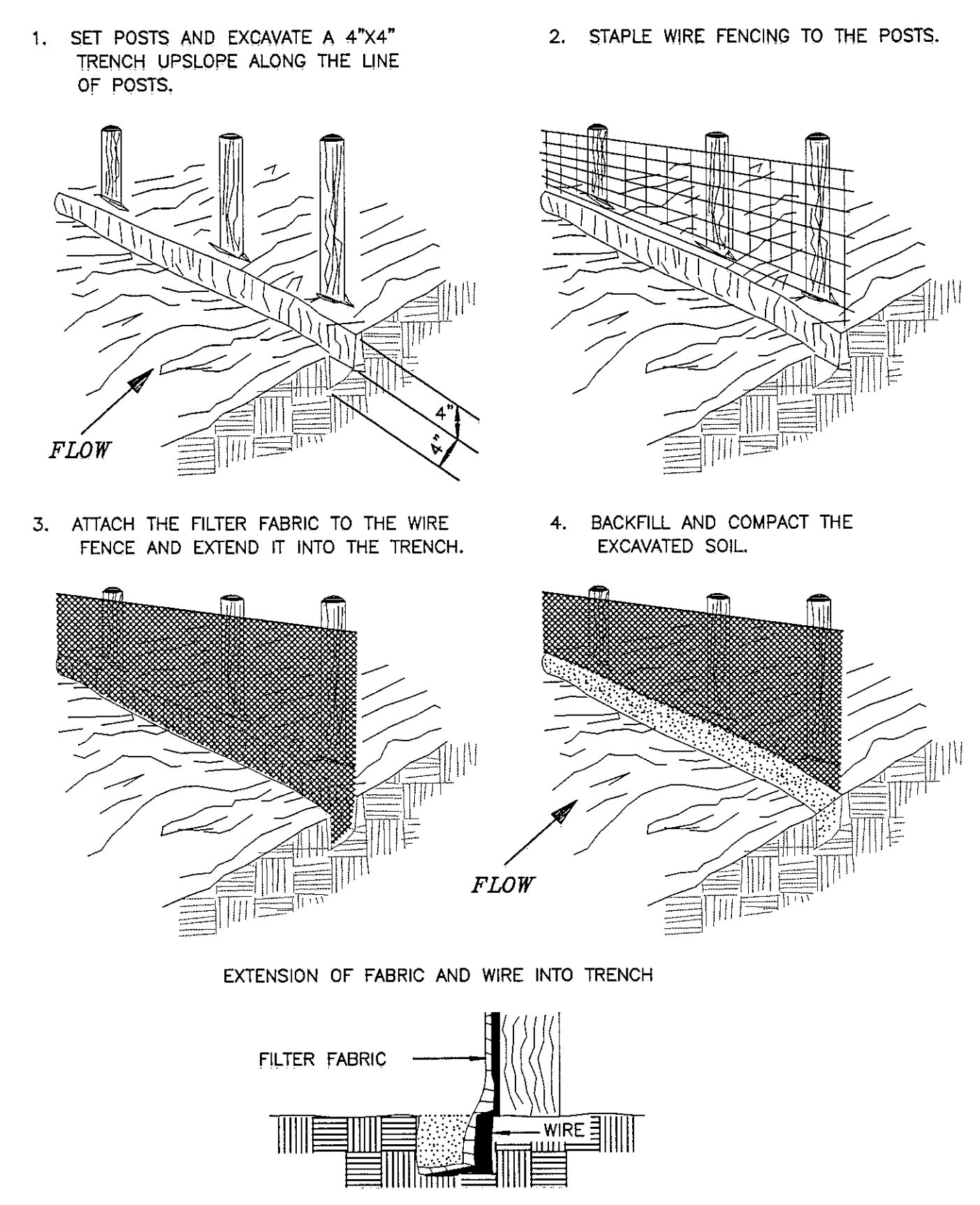


NOTES: 1. APRON LINING MAY BE RIPRAP, GROUTED RIPRAP GABION BASKET OR CONCRETE.  
2. L<sub>a</sub> IS CALCULATED USING PLATES 3.18-3 & 3.18-4  
3. d=1.5 TIMES MAX STONE DIAM, BUT NOT LESS THAN 6".

**OUTLET PROTECTION** **OP**

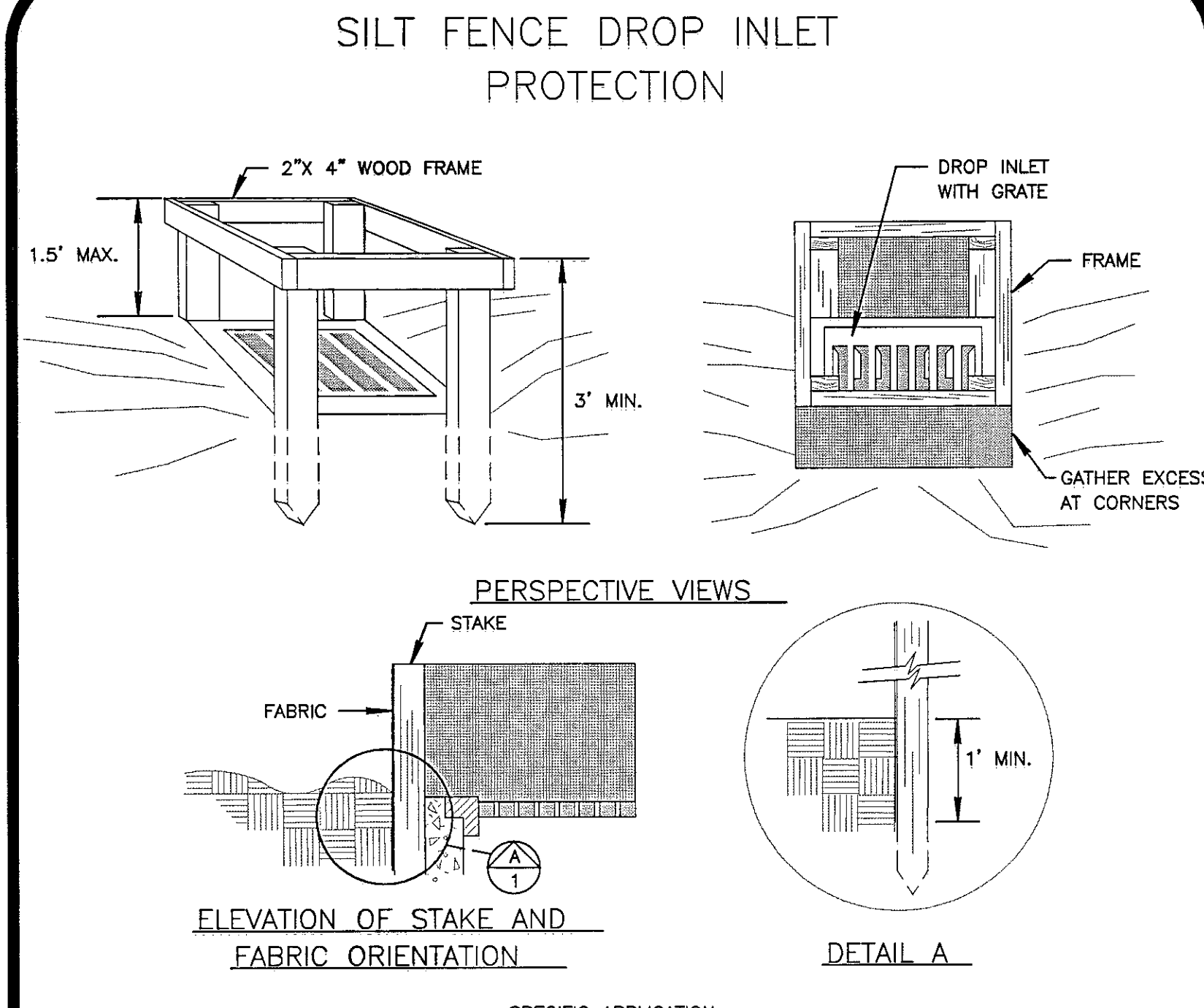


**STONE CONSTRUCTION ENTRANCE** **CE**



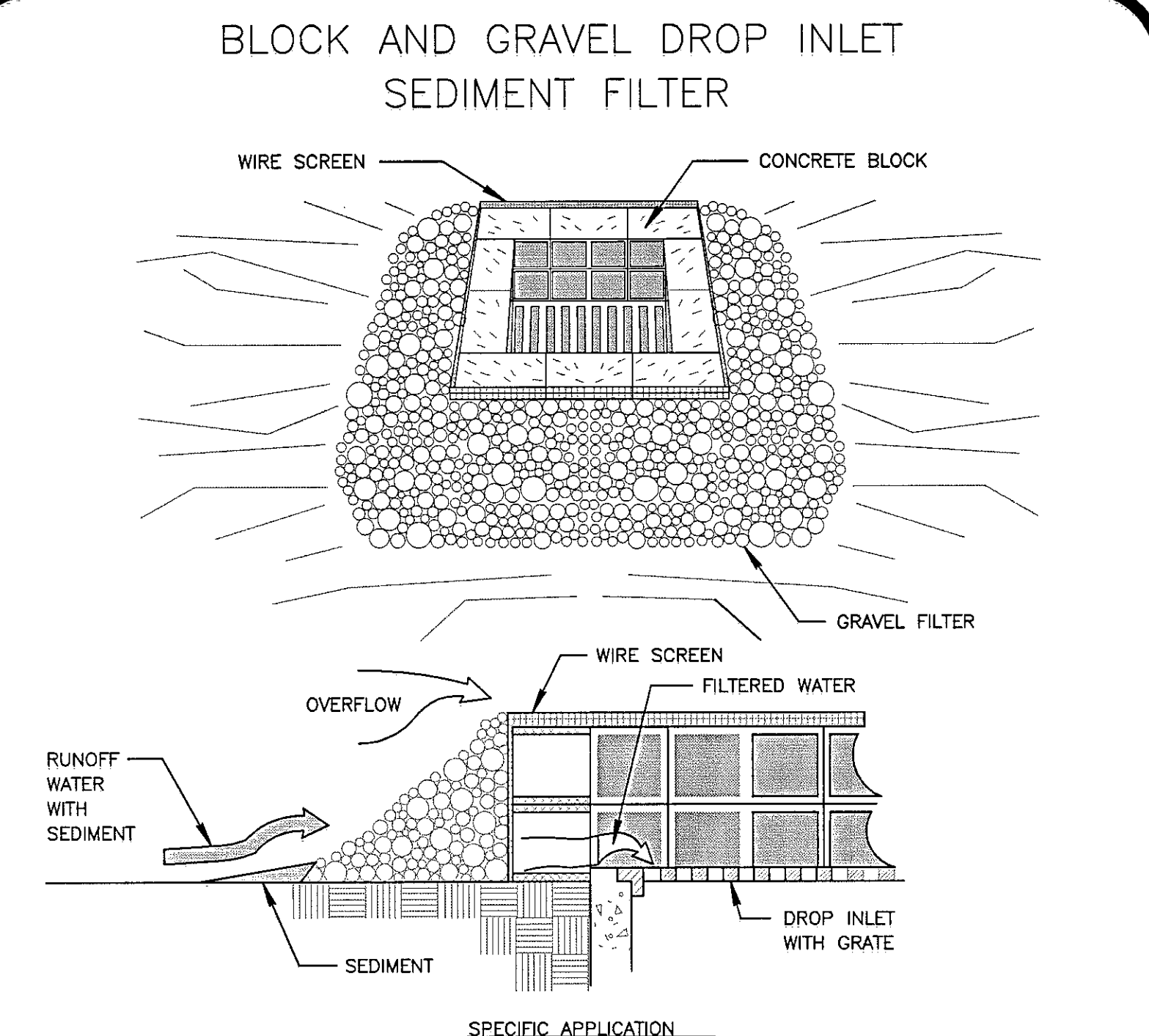
NOTE: THIS DETAIL IS FROM THE VIRGINIA EROSION AND SEDIMENT CONTROL HANDBOOK-1992. THE CONTRACTOR SHALL COMPLY WITH THE DESIGN CRITERIA, THE CONSTRUCTION SPECIFICATION, THE MAINTENANCE REQUIREMENTS AND THE REMOVAL REQUIREMENTS CONTAINED THEREIN FOR THIS ITEM.

**SILT FENCE** **SF**



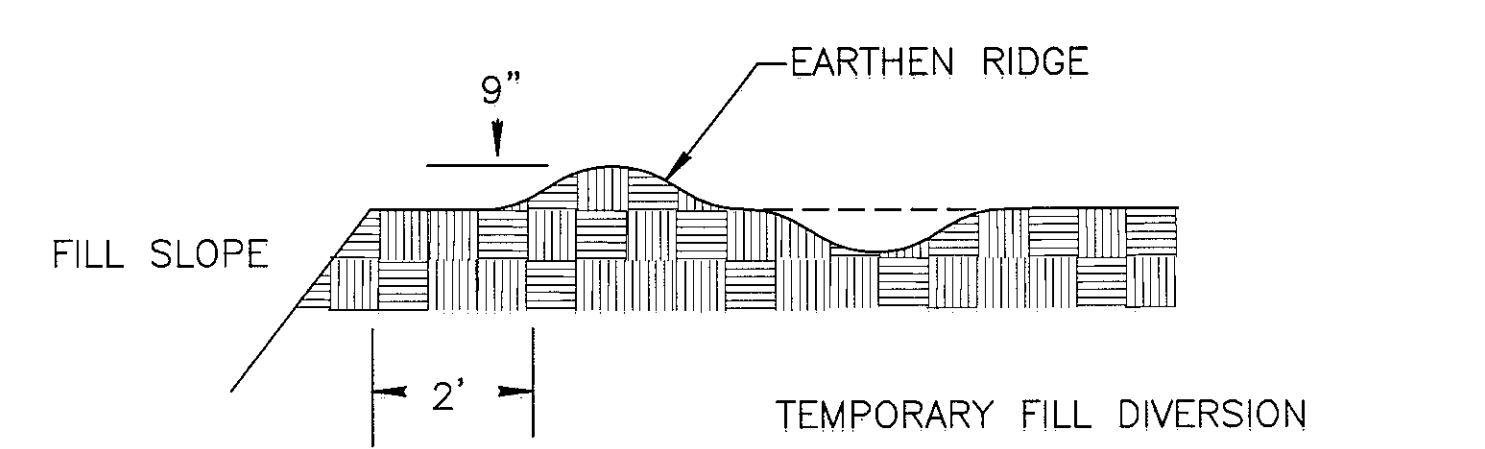
NOTE: THIS DETAIL IS FROM THE VIRGINIA EROSION AND SEDIMENT CONTROL HANDBOOK-1992. THE CONTRACTOR SHALL COMPLY WITH THE DESIGN CRITERIA, THE CONSTRUCTION SPECIFICATION, THE MAINTENANCE REQUIREMENTS AND THE REMOVAL REQUIREMENTS CONTAINED THEREIN FOR THIS ITEM.

**STORM DRAIN INLET PROTECTION** **IP**



NOTE: THIS DETAIL IS FROM THE VIRGINIA EROSION AND SEDIMENT CONTROL HANDBOOK-1992. THE CONTRACTOR SHALL COMPLY WITH THE DESIGN CRITERIA, THE CONSTRUCTION SPECIFICATION, THE MAINTENANCE REQUIREMENTS AND THE REMOVAL REQUIREMENTS CONTAINED THEREIN FOR THIS ITEM.

**STORM DRAIN INLET PROTECTION** **IP**



NOTE: THIS DETAIL IS FROM THE VIRGINIA EROSION AND SEDIMENT CONTROL HANDBOOK-1992. THE CONTRACTOR SHALL COMPLY WITH THE DESIGN CRITERIA, THE CONSTRUCTION SPECIFICATION, THE MAINTENANCE REQUIREMENTS AND THE REMOVAL REQUIREMENTS CONTAINED THEREIN FOR THIS ITEM.

**TEMPORARY FILL DIVERSION** **CD**

NOTE: REFER TO SUPPLEMENTAL DRAWINGS IN SPECIFICATIONS FOR ADDITIONAL EROSION AND SEDIMENT CONTROL DETAILS.