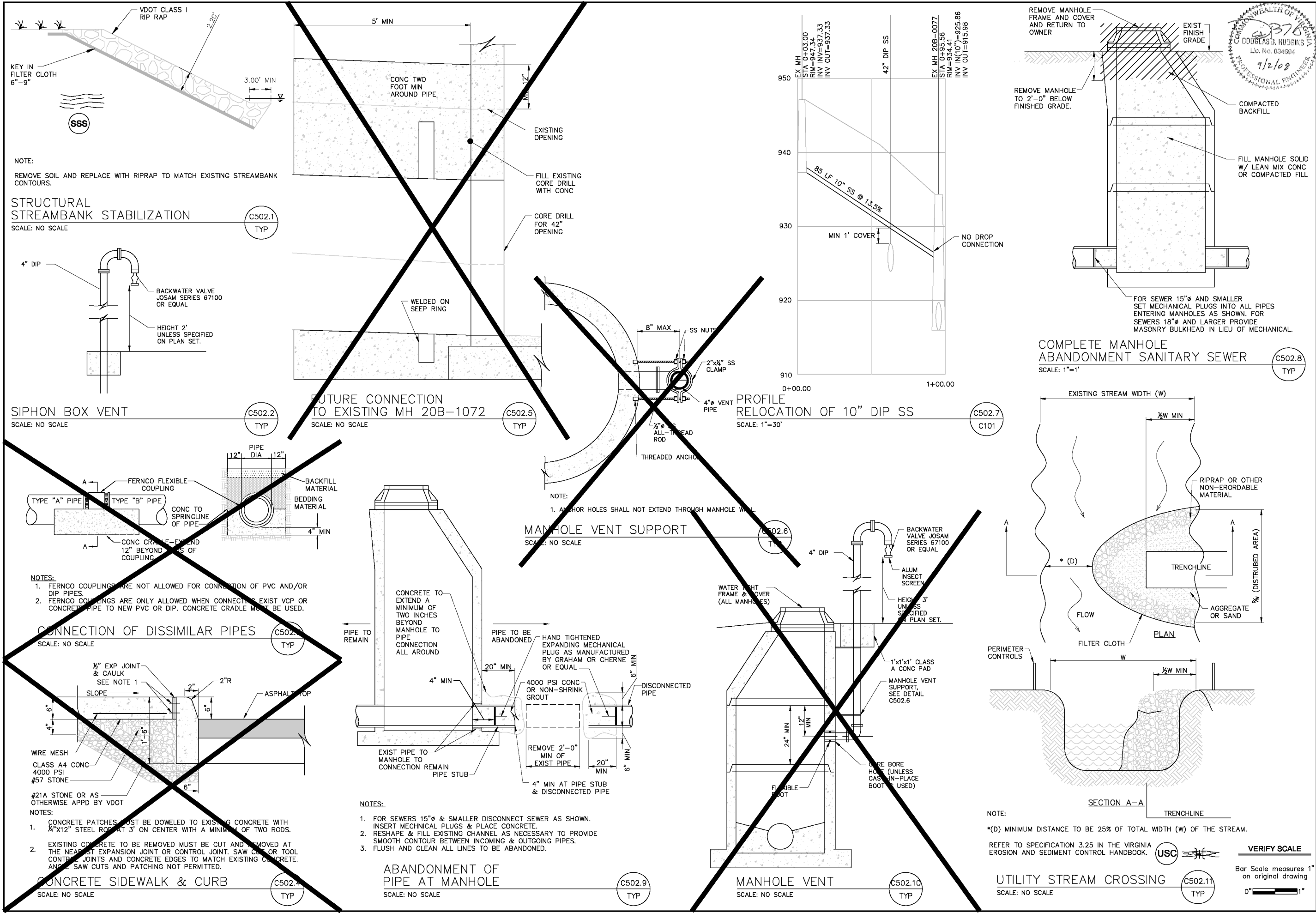


I:\Dwg\WWA\12307.08 Wasena Park Crossing\As-builts\C502.dwg, 6/15/2009 9:05:02 AM, mmohler



OLVER INCORPORATED  
Consulting Engineers & Applied Scientists

1116 SOUTH MAIN STREET  
BLACKSBURG, VIRGINIA 24060  
(540) 552-5548

WESTERN VIRGINIA WATER AUTHORITY  
INTERCEPTOR IMPROVEMENTS AT WASENA PARK

TYPICAL DETAILS

Rev	Description	Date	By
E	AS-BUILT	6/11/09	DBH
D	E&S COMMENTS	1/20/09	MFW
C	CONSTRUCTION ISSUE	1/5/09	DBH
B	BID ISSUE/VEQ REVIEW	8/27/08	DBH
A	CLIENT REVIEW	8/20/08	DBH

Designed: ETA  
Drawn: MJM  
Checked: DBH  
Date: 6/25/08  
Scale: AS SHOWN  
Job No. 12307.08  
Archived File Name:

C502