

STRUCTURE TABLE

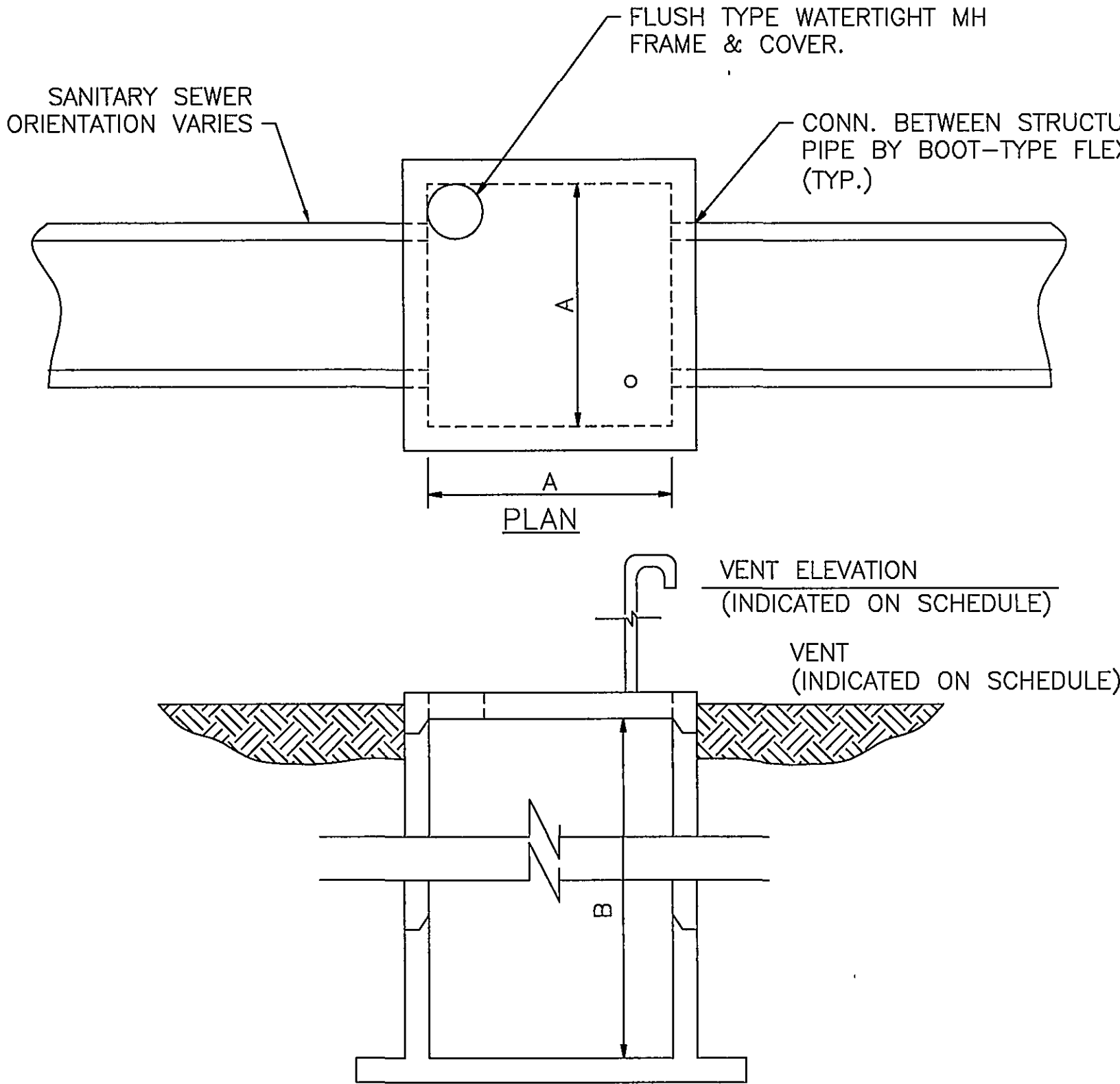
| NO.   | LOCATION                      | TYPE  | REMARKS                                    |
|-------|-------------------------------|-------|--|
| S1    | N 3623688.00<br>E 11072334.62 | JB    | SIPHON OUTLET, PLAN<br>AND SECT. SH C12    |
| S2    | N 3623874.89<br>E 11072381.14 | JB    | SIPHON INLET, PLAN<br>SH C12, SECT. SH C13 |
| S3    | N 3623883.53<br>E 11072390.36 | TMH-C | DETAIL SH C9                               |
| S4    | N 3623877.26<br>E 11072652.92 | TMH-B | DETAIL SH C9                               |
| S5    |                               | JB    | THIS SHEET                                 |
| S6    | N 3623804.44<br>E 11072966.01 | TMH-B | DETAIL SH C9,W/VENT                        |
| S7    | N 3623582.95<br>E 11073531.46 | TMH-C | DETAIL SH C9                               |
| S8    | N 3623613.50<br>E 11073601.35 | TMH-C | DETAIL SH C9                               |
| S9    |                               | JB    | THIS SHEET                                 |
| S10   | N 3623598.77<br>E 11074119.79 | JB    | THIS SHEET                                 |
| S11   | N 3623696.30<br>E 11074152.87 | BEND  |  |
| S12   |                               | JB    | THIS SHEET                                 |
| S13   | N 3623714.08<br>E 11074168.41 | BEND  |  |
| S14   |                               | TMH-B | DETAIL SH C9                               |
| S15   |                               | TMH-B | DETAIL SH C9                               |
| S16   | N 3624017.65<br>E 11074291.01 | BEND  |  |
| S17   |                               | TMH-B | DETAIL SH C9                               |
| S18   |                               | TMH-B | DETAIL SH C9,W/VENT<br>VENT ELEV 907.0     |
| S19   |                               | TMH-B | DETAIL SH C9                               |
| S19-1 |                               | MH    | 4' DIA, DETAIL SH C9                       |
| S20   |                               | TMH-B | DETAIL SH C9                               |
| S21   |                               | TMH   | PLAN AND SECTION<br>SH C14                 |
| S22   | N 3625718.97<br>E 11074009.80 | TMH-A | DETAIL SH C9,W/VENT<br>VENT ELEV 908.0     |
| S23   | N 3626142.67<br>E 11073773.90 | TMH-B | DETAIL SH C9,W/VENT<br>VENT ELEV 908.0     |
| S24   | N 3626558.46<br>E 11073505.42 | TMH-B | DETAIL SH C9,W/VENT<br>VENT ELEV 908.0     |

STRUCTURE TABLE

| NO.   | LOCATION                      | TYPE  | REMARKS              |
|-------|-------------------------------|-------|----------------------|
| S25   | N 3626707.66<br>E 11073418.34 | TMH-B | DETAIL SH C9         |
| S25-2 | N 3626769.90<br>E 11073400.07 | SDMH  | 4' DIA, DETAIL SH C9 |
| S26   | N 362672.96<br>E 11073335.33  | TMH-A | DETAIL SH C9         |

NOTES:

- LOCATION IS GIVEN TO THE CENTER OF STANDARD MANHOLES, TO THE POINT OF DEFLECTION FOR TEE MANHOLES AND THE STRUCTURE LOCATION POINT FOR JUNCTION BOXES.
- FIELD LOCATE EXISTING SANITARY SEWERS AT POINTS OF CONNECTION AND DETERMINE THE FIELD ADJUSTMENT REQUIRED, IF ANY, TO THE STRUCTURE LOCATIONS PRIOR TO ORDERING PIPE OR STRUCTURE. HAVE FIELD ADJUSTMENTS APPROVED BY THE OWNER'S REPRESENTATIVE.
- STRUCTURE TABLE TYPES  
JB JUNCTION BOX  
MH STANDARD MANHOLE  
TMH-A TEE MANHOLE, TYPE A  
TMH-B TEE MANHOLE, TYPE B  
TMH-C TEE MANHOLE, TYPE C  
SDMH STORM DRAIN MANHOLE
- PROVIDE WATERTIGHT MANHOLE FRAME & COVERS, EXCEPT PROVIDE STANDARD MANHOLE FRAMES AND COVERS FOR STORM DRAIN MANHOLES.

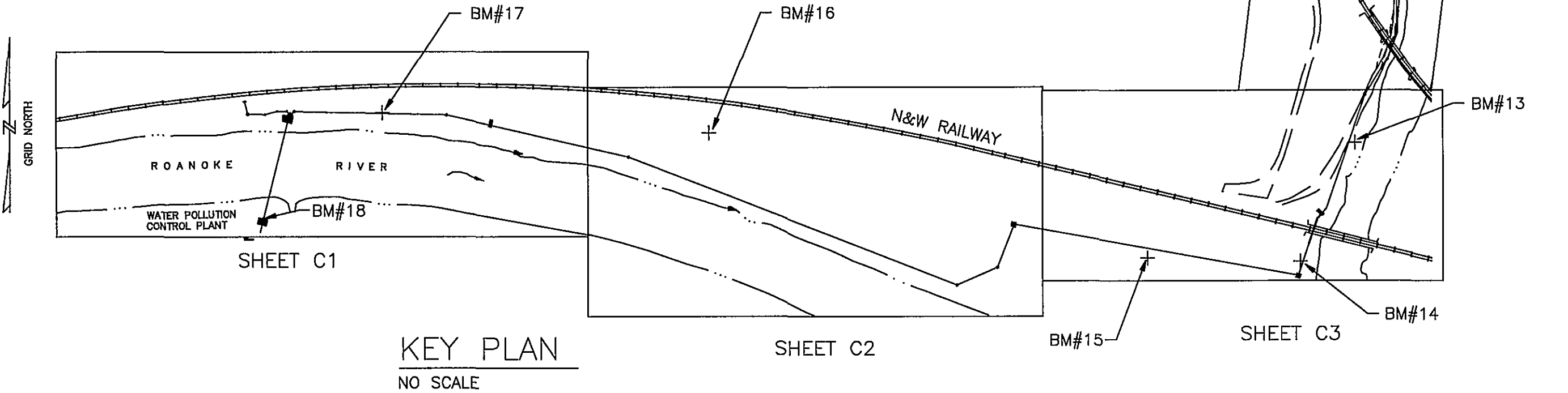


SECTION  
PRECAST CONCRETE JUNCTION BOXES  
NO SCALE

BENCHMARKS

- BM #10 - CHISELED SQUARE ON NORTHWEST CORNER OF WEST ABUTMENT OF DALE AVENUE BRIDGE OVER TINKER CREEK ELEVATION = 904.68
- BM #11 - CHISELED SQUARE ON NORTH SIDE OF MANHOLE RIM, LOCATED 88 FEET SOUTHEAST OF TS-16 ELEVATION = 900.33
- BM #12 - CHISELED SQUARE ON NORTH SIDE OF MANHOLE RIM, LOCATED 87 FEET NORTH OF TS-12 ELEVATION = 895.80
- BM #13 - RAILROAD SPIKE SET IN WEST SIDE OF 32" BOXELDER, 30 FEET SOUTHEAST OF THE SOUTHEAST CORNER OF CHAIN LINK FENCE AROUND PLANTATION PIPELINE VALVE ELEVATION = 892.97
- BM #14 - CITY OF ROANOKE BRASS DISK BENCH MARK SET IN NORTHWEST CORNER OF CONCRETE VAULT, WEST OF TINKER CREEK AND 55 FEET SOUTH OF RAILWAY TRACK ELEVATION = 891.48
- BM #15 - RAILROAD SPIKE SET IN NORTHWEST SIDE OF 30" SYCAMORE LOCATED 100 FEET SOUTHEAST OF TS-9 ELEVATION = 894.23
- BM #16 - RAILROAD SPIKE SET IN SOUTH SIDE OF 6" SYCAMORE 50 FEET SOUTH OF RAILWAY TRACK AND 350 FEET EAST OF MANHOLE ELEVATION = 899.00
- BM #17 - RAILROAD SPIKE SET IN NORTHWEST SIDE OF POWER POLE LOCATED 45 FEET SOUTH OF RAILWAY TRACK AND 185 FEET EAST OF MANHOLE ELEVATION = 894.80
- BM #18 - RAILROAD SPIKE SET IN SOUTH SIDE OF POWER POLE #279-99, LOCATED 25 FEET EAST OF MANHOLE ELEVATION = 900.68

| PRECAST CONCRETE JUNCTION BOX SCHEDULE |        |        |                |
|--|--------|--------|----------------|
| STRUCTURE                              | A (ft) | B (ft) | VENT ELEVATION |
| S5                                     | 6      | 14     | 903.0          |
| S9                                     | 6      | 15     | 903.0          |
| S10                                    | 6      | 9      | NONE           |
| S12                                    | 6      | 8      | NONE           |



KEY PLAN  
NO SCALE

HAYES, SEAY, MATTERN & MATTERN, INC.  
ARCHITECTS/ENGINEERS/PLANNERS  
ROANOKE, VIRGINIA

| DESIGNED: DMH | DATE     |  | BY  |  | REVISIONS                             |  |
|---------------|----------|--|-----|--|---------------------------------------|--|
|               | 10/15/98 |  | MNH |  | DESCRIPTION                           |  |
| DRAWN: MHL    |          |  |     |  | RECORD DRAWINGS SEE SHEET G1 FOR NOTE |  |
|               |          |  |     |  |                                       |  |
| CHECKED:      |          |  |     |  |                                       |  |
|               |          |  |     |  |                                       |  |
| APPROVED:     |          |  |     |  |                                       |  |
|               |          |  |     |  |                                       |  |

TINKER CREEK INTERCEPTOR SEWER  
CITY OF ROANOKE, VIRGINIA

STRUCTURE TABLE, BENCHMARKS,  
AND KEY PLAN

COMM. NO.: 7211 SCALE: NONE DATE: MAY 17, 1996

PROJECT NO.: 6317

CONTRACT A  
SHEET NO.

G3

RECORD DRAWING