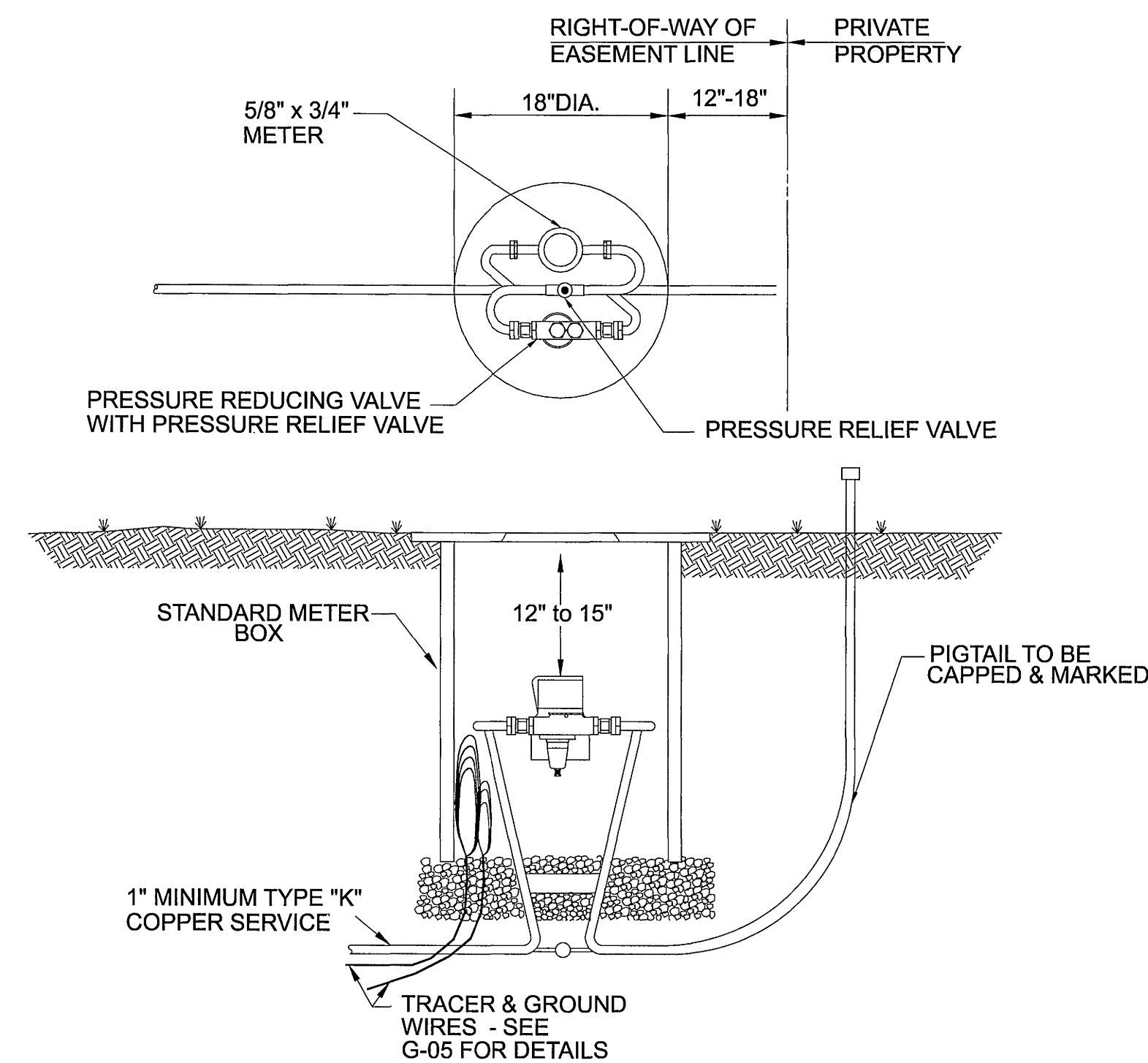


FON C	REVISED	FHWA REGION	STATE	FEDERAL AID	STATE		SHEET NO.
				PROJECT	ROUTE	PROJECT	
		3	VA.		//	0011-080-108,C501	211(19A)

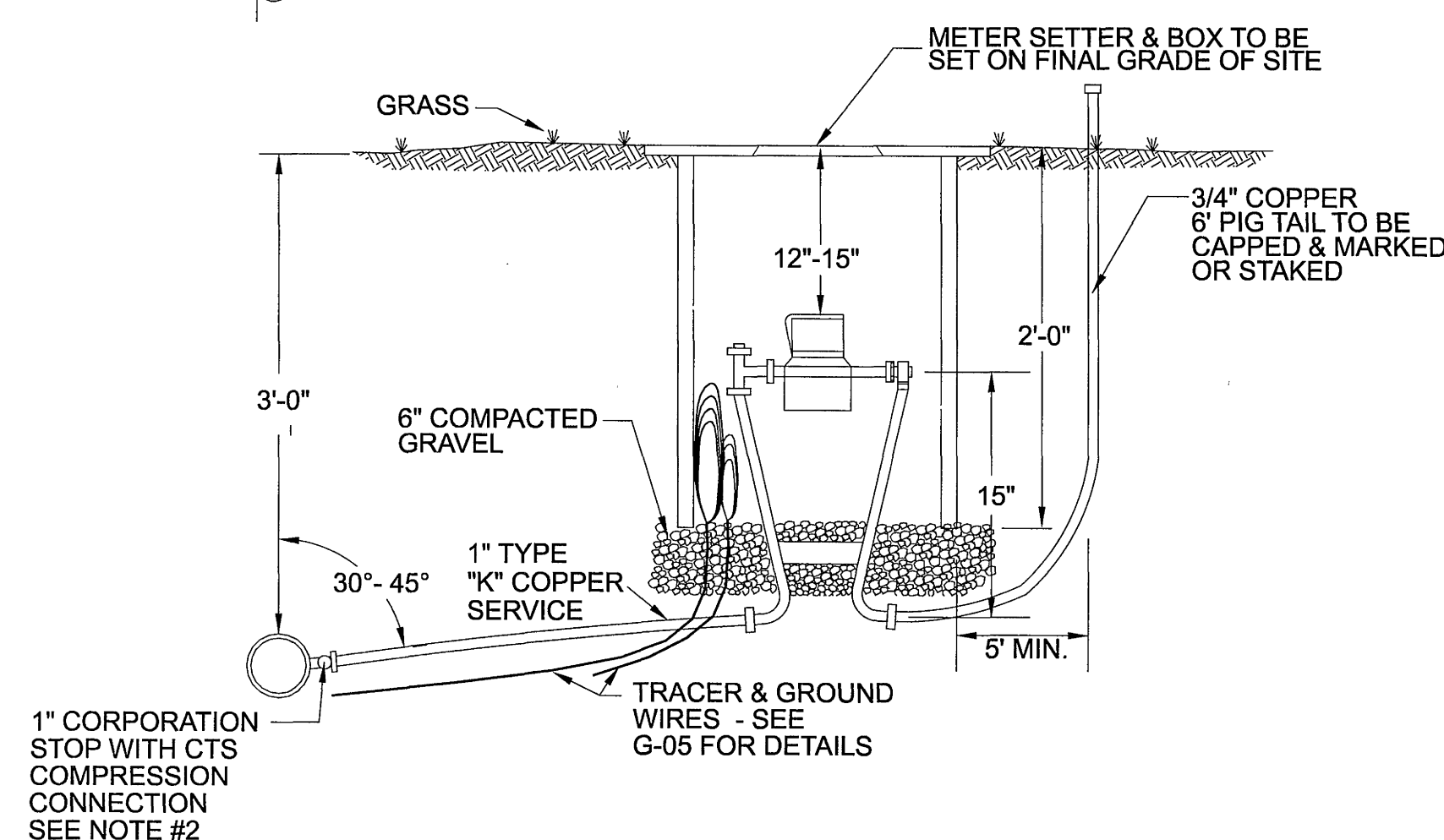
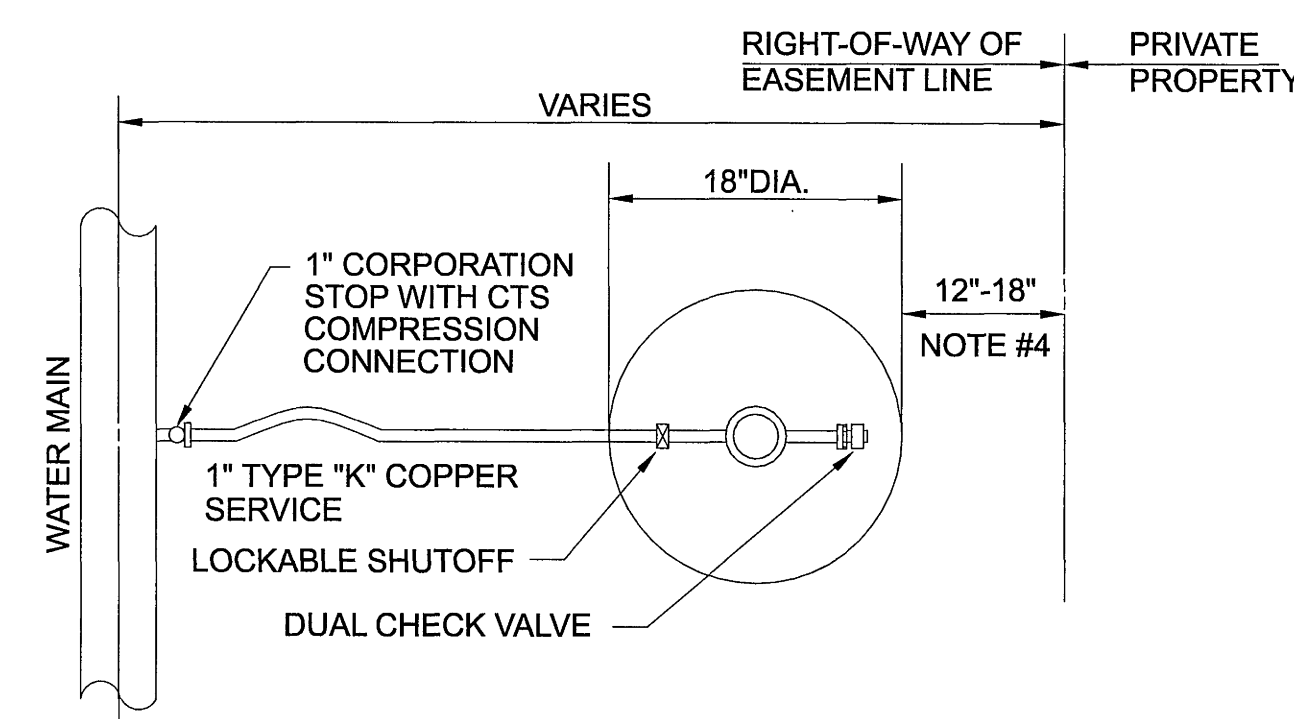


SEE W-O1 NOTE #2 FOR SERVICE SADDLE DETAILS

1. SETTER TO BE A.Y. McDONALD #50-215 WDDD33 , FORD TVBHH92-15W-1133 OR APPROVED EQUAL.
2. PRESSURE REDUCING VALVE TO BE WATTS 600 OR APPROVED EQUAL.
3. SITHY OR 3108031 01 WITH EQUAL.
4. METER BOX MUST BE CARSON/MID-STATES PLASTICS, INC. PLASTIC BOX WITH FORD A32-T (ELECTRONIC READ LID) OR A.Y. McDONALD MODEL 74M32C-TC CAST IRON BASE & COVER OR APPROVED EQUAL.
5. THIS CONFIGURATION IS REQUIRED WHEN THE WATER PRESSURE AT THE WATER MAIN EXCEEDS 120 PSI. UNIT SHALL PROVIDE PRESSURE REDUCING VALVE WITH PRESSURE RELIEF VALVE OR PRESSURE RELIEF VALVE AS SHOWN ON DRAWING.

TYPE "C" SINGLE RESIDENTIAL SERVICE FOR
HIGH PRESSURE (LINE PRESSURE OVER 120 psi)

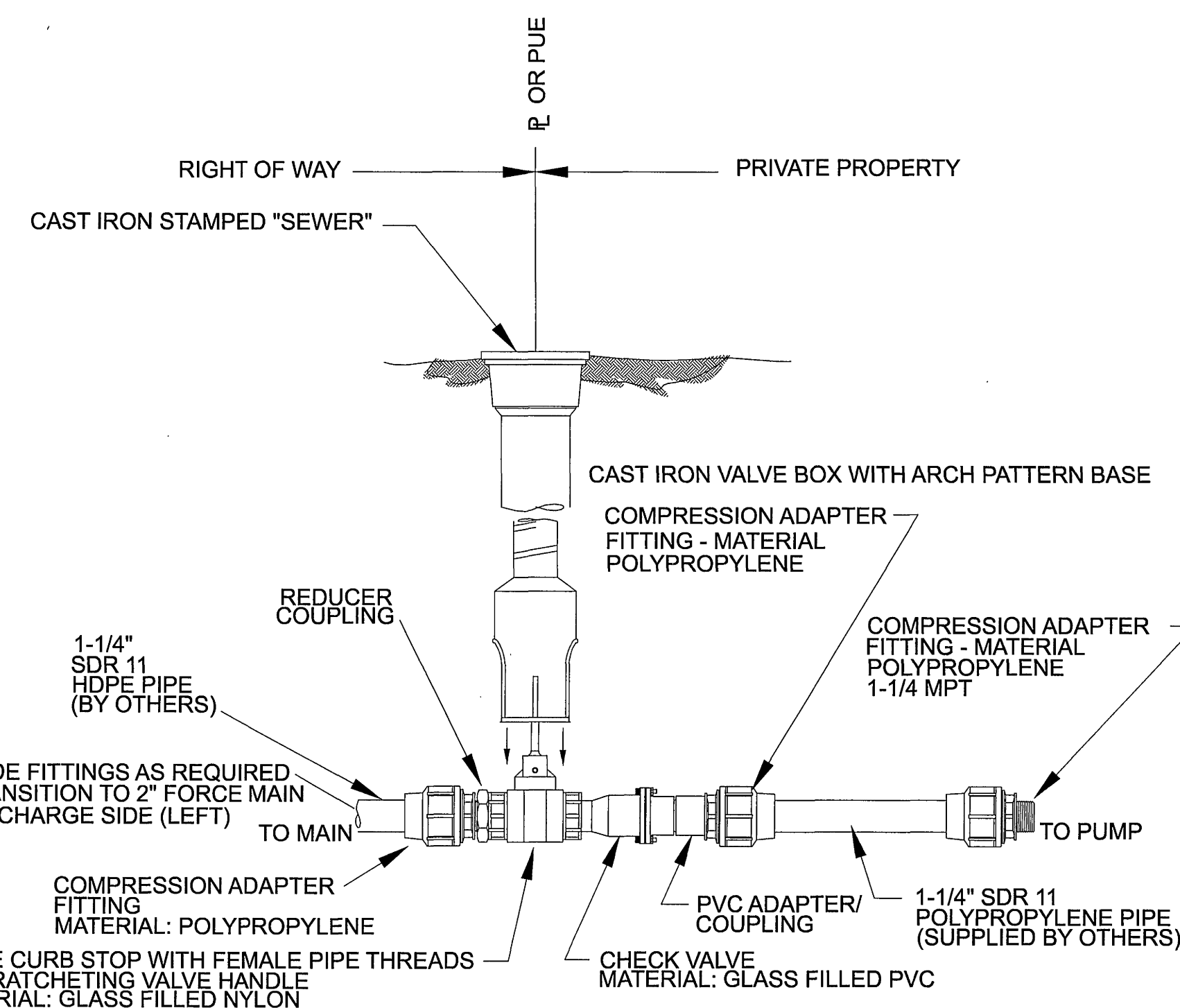
NOT TO SCALE



1. SETTER TO BE A.Y. McDONALD #20-215 WDD33, FORD V8HH7-15W-1133 OR APPROVED EQUAL.
2. SADDLES MUST BE USED WITH A PLASTIC & CLASS 50 DUCTILE IRON PIPE. SERVICE SADDLES SHALL BE USED IN ACCORDANCE WITH SECTION 2665 OF THE WATER STANDARDS. SERVICE SADDLES FOR PLASTIC PIPE SHALL BE: POWERSEAL 3417, OR 3412AS, ROMAC 2025, OR 306, OR FORD METER FS202 OR FS303, OR DUCTILE IRON PIPE USE THE ABOVE OR APPROVED 3413, ROMAC 2025 OR FORD METER F202.
3. FORD METER BOX MUST BE A.Y. McDONALD MODEL 74N32C OR FORD METER BOX WITH A 32" ID (ELECTRONIC READ LID) OR A.Y. McDONALD MODEL 74N32C OR FORD METER BOX WITH A 32" ID OR APPROVED EQUAL. USE OF TRAFFIC BEARING BOX SHALL BE APPROVED BY THE AUTHORITY. TRAFFIC BEARING BOX SHALL BE CARSON/MIID STATES PLASTICS H20 OR EQUIVALENT AND LID SHALL BE FORD METER BOX C32H OR EQUIVALENT.
4. WHENEVER SIDEWALK EXISTS OR IS PROPOSED, MODIFY METER LOCATION AS DIRECTED.
5. CORPORATION STOP MUST BE FORD F1000-L-G OR APPROVED EQUAL.

TYPE "A" SINGLE RESIDENTIAL WATER
SERVICE (LINE PRESSURE UNDER 80 psi)

NOT TO SCALE

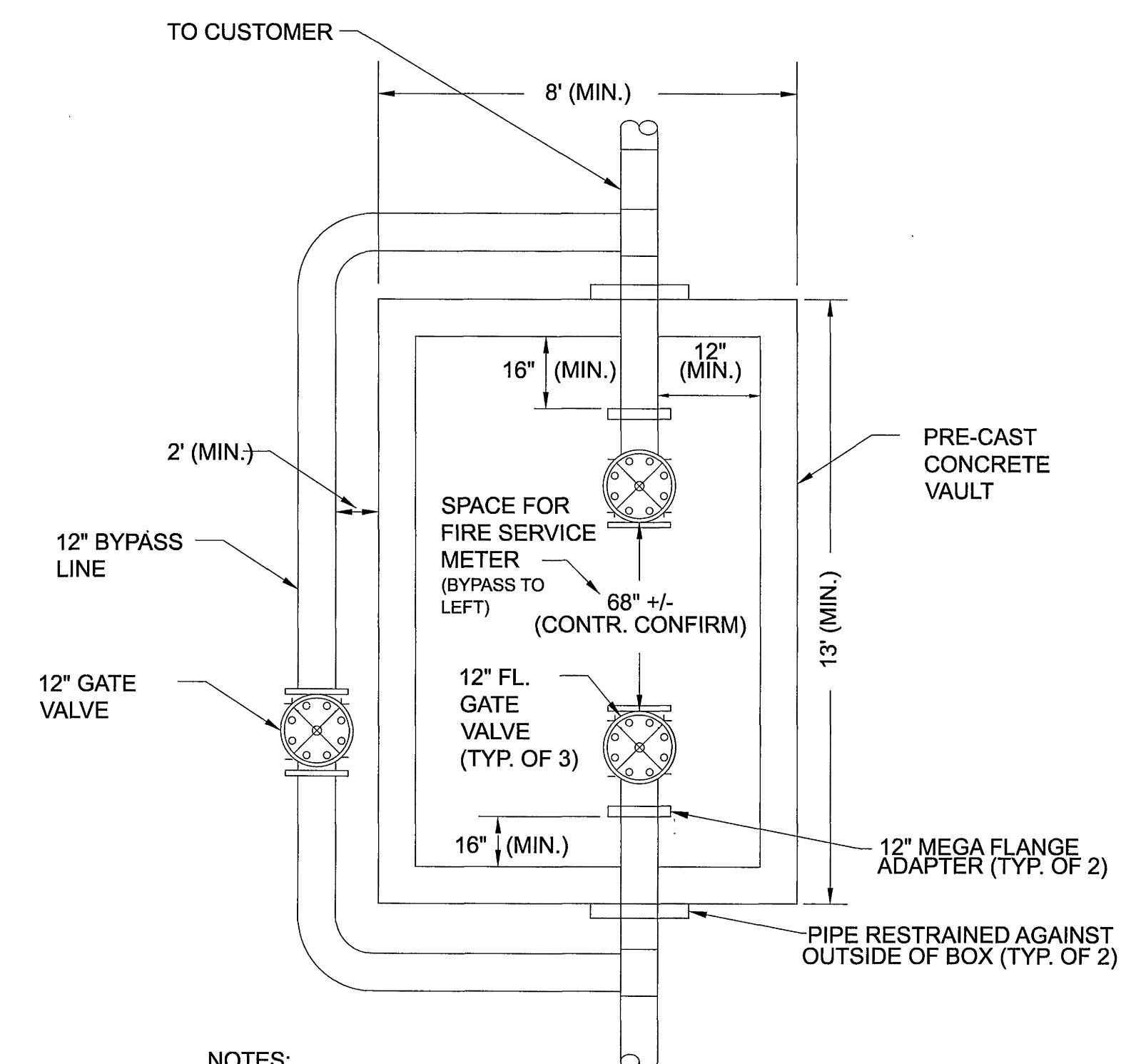


NOTES:

- NOTES:
1. E ONE SEWER SYSTEMS PA1329P02 PLASTIC LATERAL ASSEMBLY OR EQUIVALENT WITH CAST IRON VALVE BOX
2. PRESSURE RATING SHALL BE 150 PSI
3. ASSEMBLY TO BE USED WITH 1-1/4" SDR 11 PIPE ONLY

SANITARY SEWER PRESSURE LATERAL ASSEMBLY

NOT TO SCALE



RELOCATE EXISTING METER VAULT

NOT TO SCALE