

#DGN#
#DGNLEV

#REF001
#LEV001

#REF002
#LEV002

#REF003
#LEV003

#REF004
#LEV004

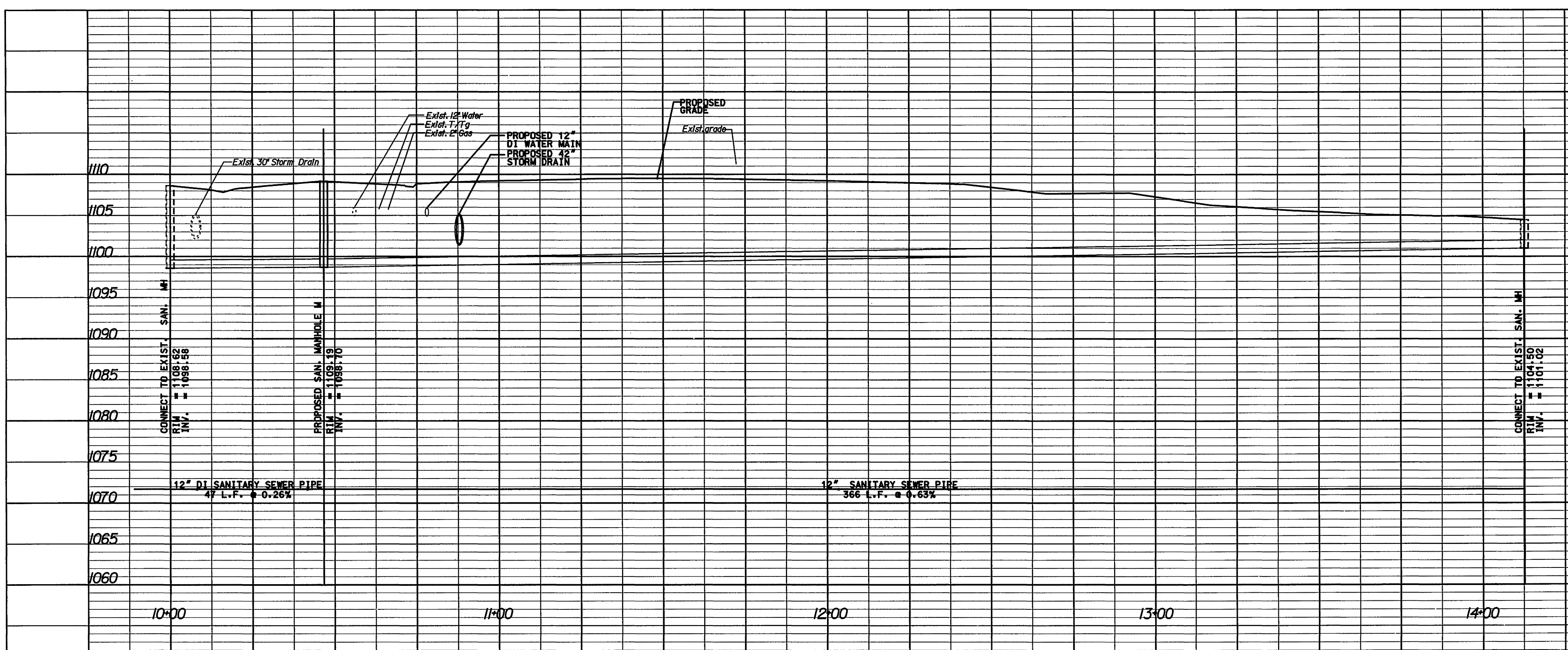
#REF005
#LEV005

#REF006
#LEV006

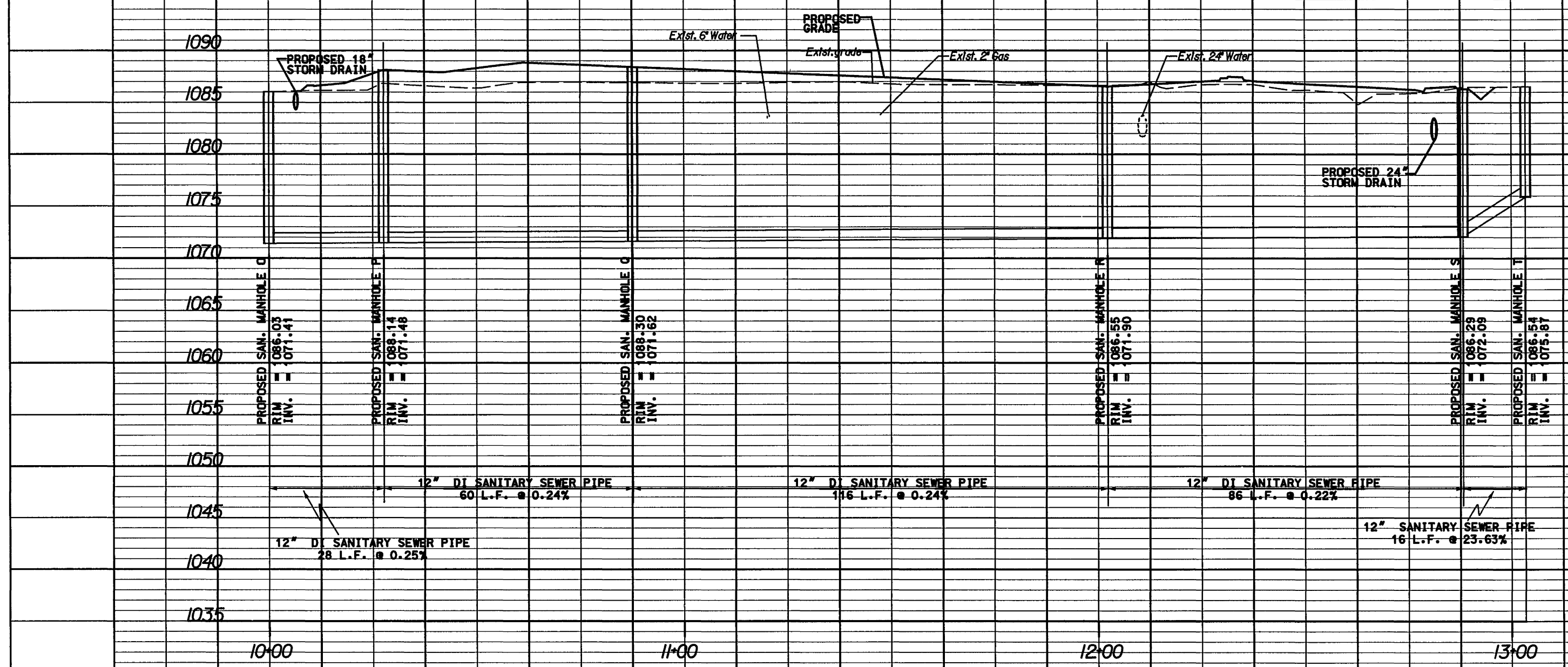
SURVEYED BY: T.M. VERMAATEN, (B041786-5483)
SUPERVISED BY: BRADLEY C. CRAIG, MATTERN & CRAIG, INC. (540) 345-9342
DESIGNED BY: BRADLEY C. CRAIG, MATTERN & CRAIG, INC. (540) 345-9342

DESIGN FEATURES RELATING TO CONSTRUCTION
OR TO REGULATION AND CONTROL OF TRAFFIC
MAY BE SUBJECT TO CHANGE AS DEEMED
NECESSARY BY THE DEPARTMENT

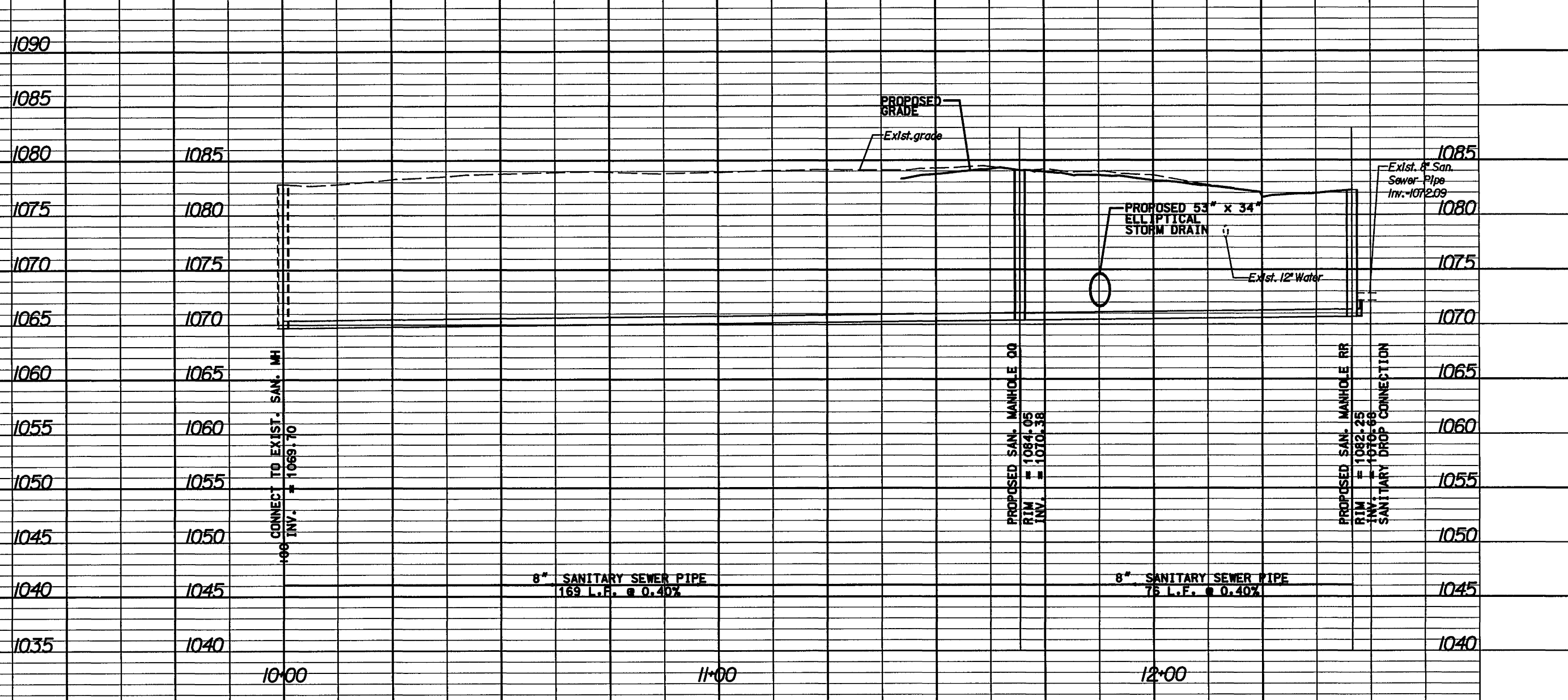
REVISED	STATE	FEDERAL AID	ROUTE	PROJECT	ROUTE	STATE	SHEET NO.
	VA.		11			0011-080-108 C-501	21(22)



12" SANITARY SEWER PIPE, PLAN SHEET 21(8)
APPROX. STA. 49+03.28 RT. CONST. E ON ROUTE 11 TO
APPROX. STA. 52+73.76 RT. CONST. E ON ROUTE 11



12" SANITARY SEWER PIPE, PLAN SHEET 21(10) & 21(11)
APPROX. STA. 71+32.56 RT. CONST. E ON ROUTE 11 TO
APPROX. STA. 73+06.06 RT. CONST. E ON ROUTE 11



12" & 8" SANITARY SEWER PIPE, PLAN SHEET 21(8D)
APPROX. STA. 21+21.240 RT. CONST. E ON GARMAN ROAD TO
APPROX. STA. 20+65.05 RT. CONST. E ON GARMAN ROAD

\$TIME\$TAMP\$

PLAN NO.	PROJECT	FILE NO.	SHEET NO.
	0011-080-108		21(22)