

March 3, 2015

Dear Sirs

Thank you for submitting the revised plans on March 3, 2014 for our review of the Williamson & Tazewell project.

Filterra® structure F1(FTIBD) (x4) were studied for:

- Planned Filterra® box size
- Filterra® contributing drainage area meeting project's regional sizing specification
- Filterra® invert elevations comply with internal system requirements
- The Filterra® inlet and outlet pipes are sized correctly and exit perpendicular to the wall
- For any conflicting structures such as storm drain pipes below Filterra®
- For most efficient placement of Filterra® units

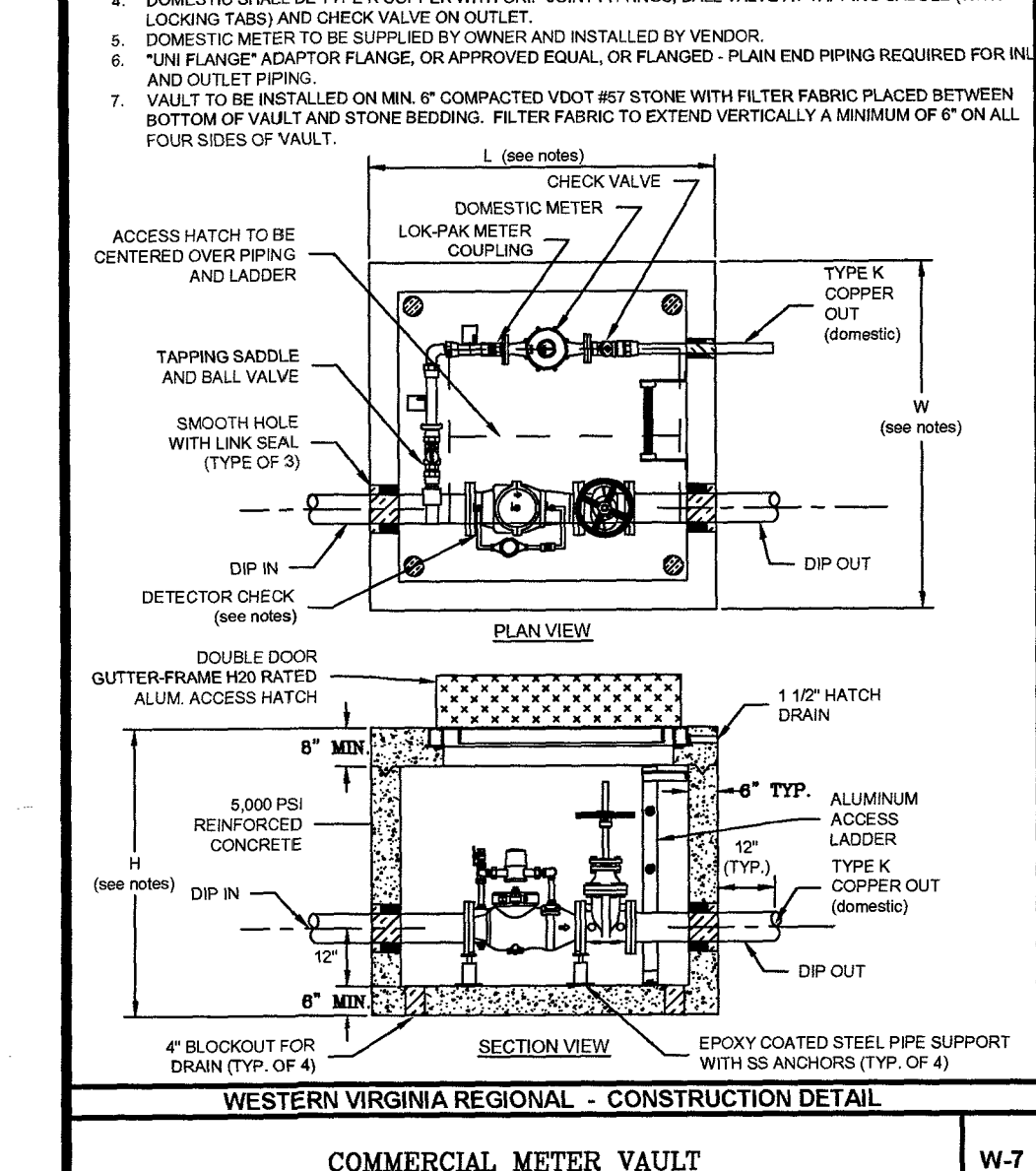
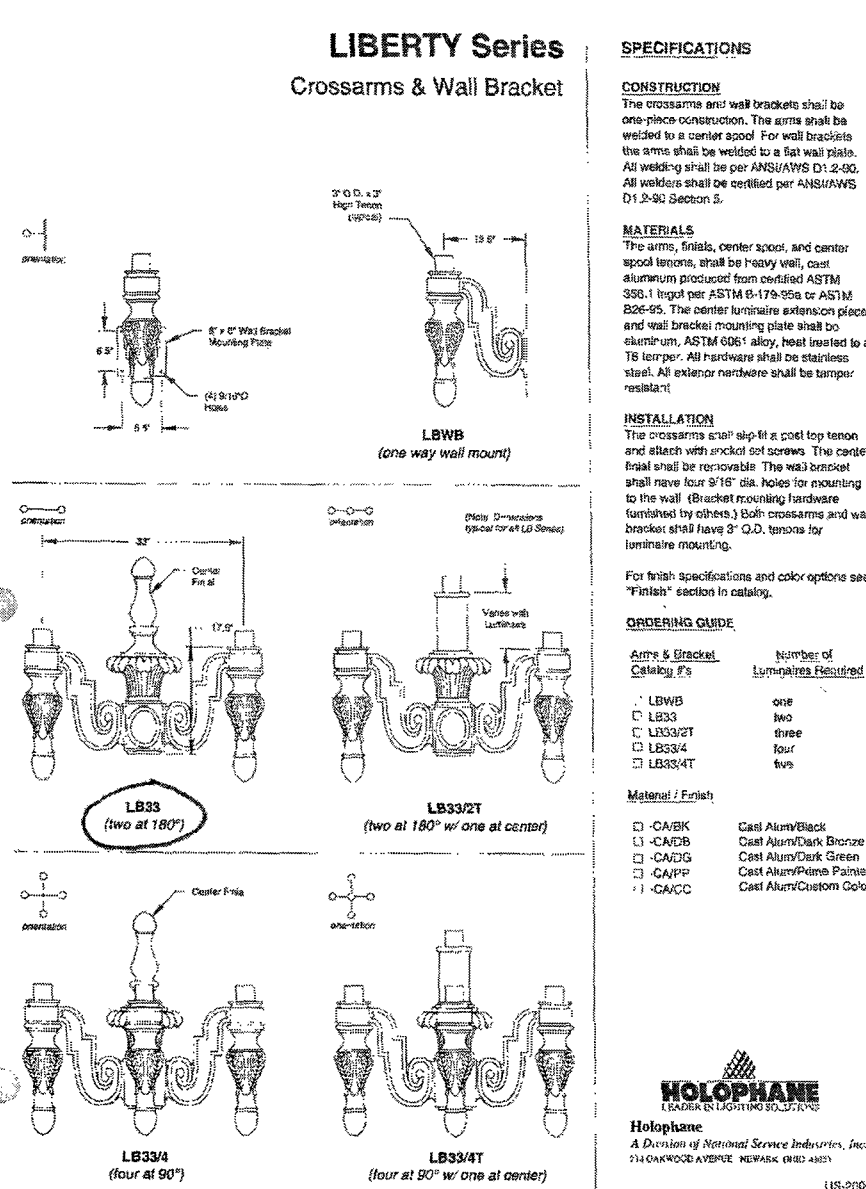
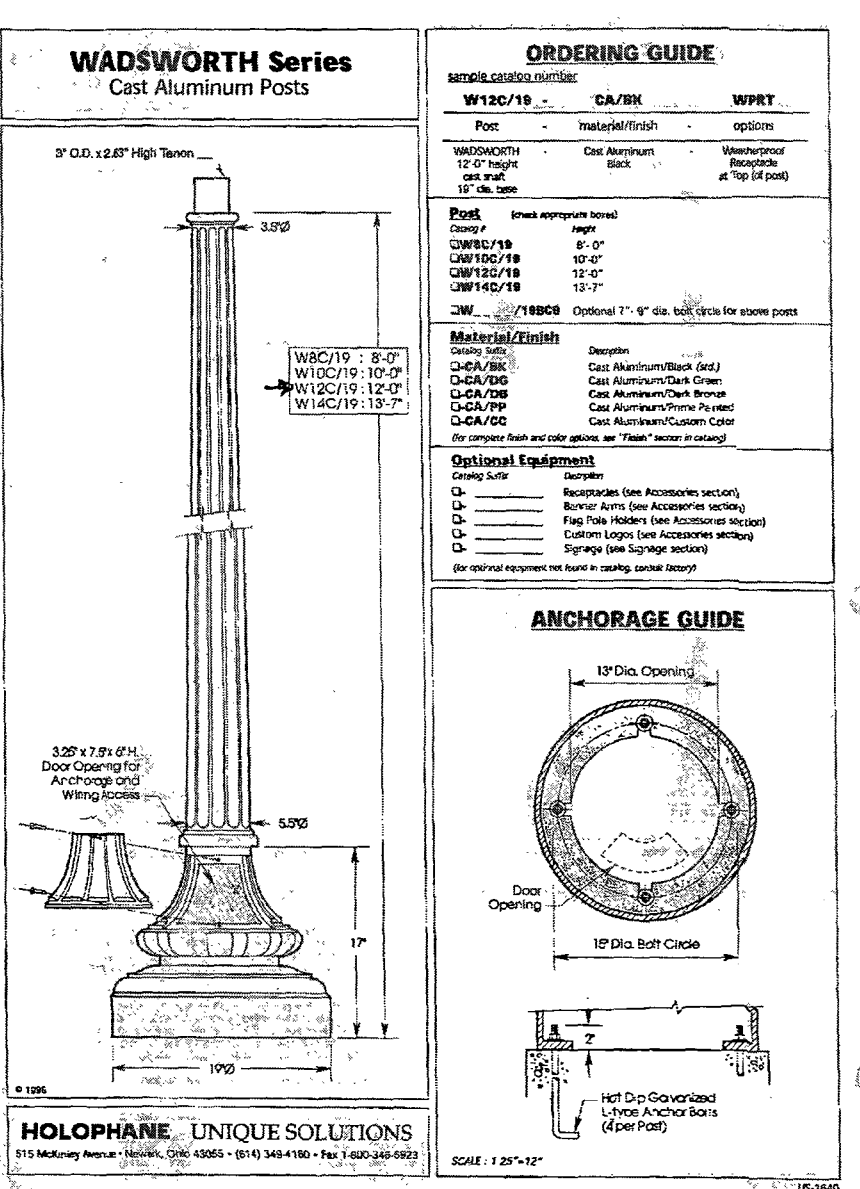
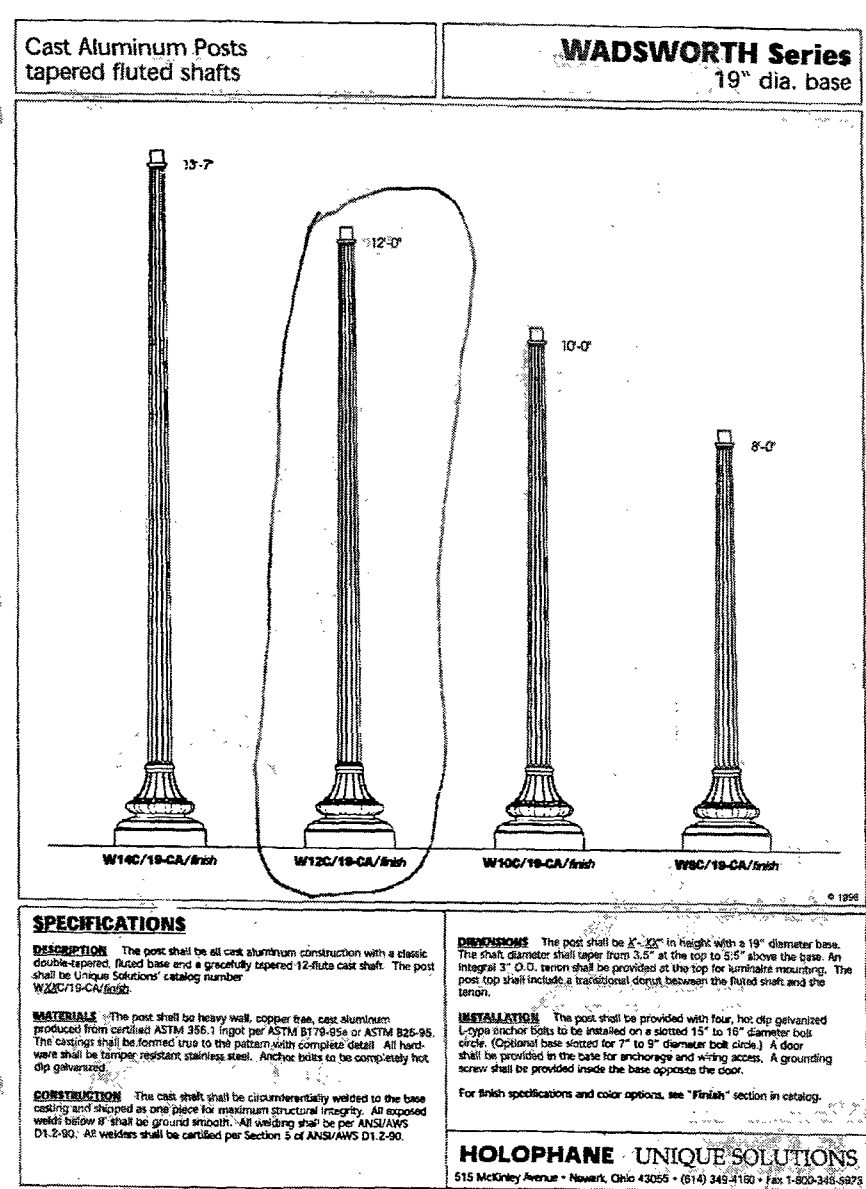
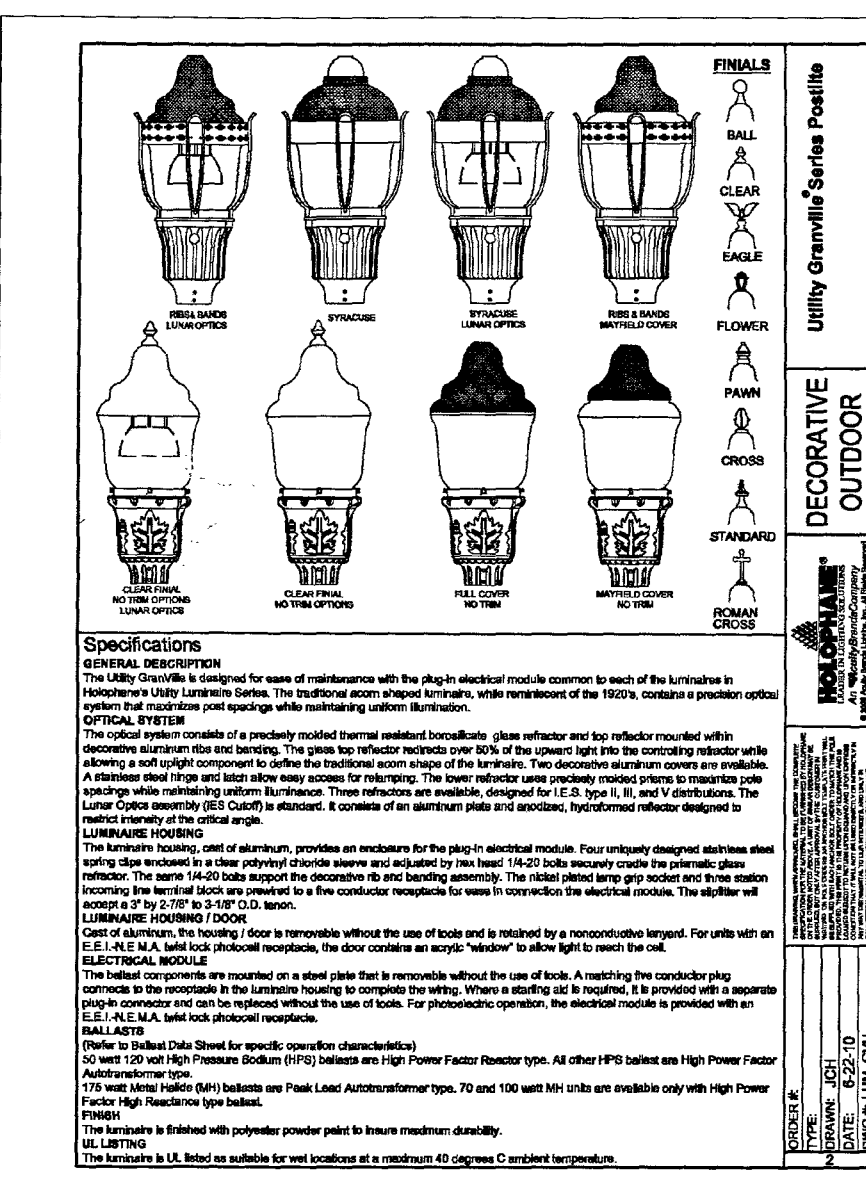
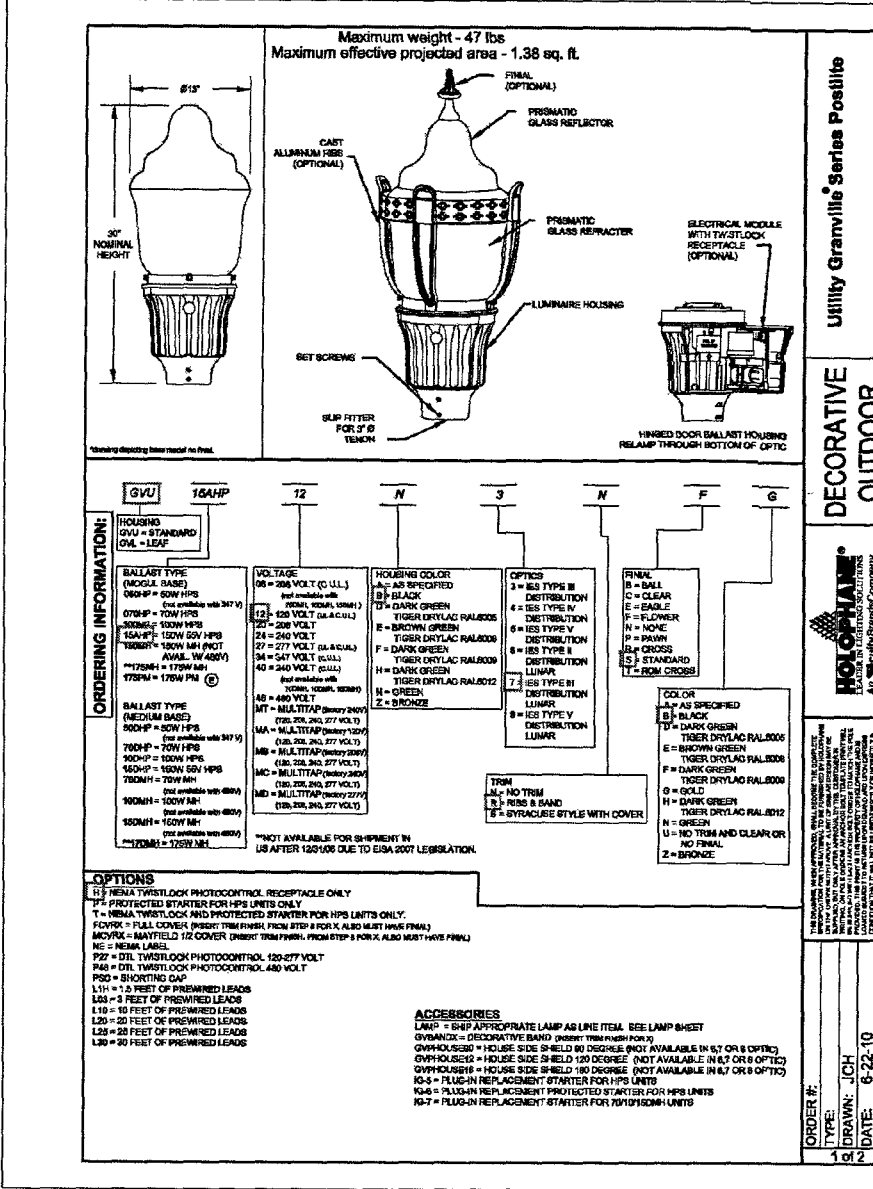
The plan review concluded that the Filterra® structure listed above is sited and sized appropriately to treat stormwater to our published specifications.

Operational consistency with these specifications is contingent upon the stormwater unit being installed correctly and according to the plans, as well as regular maintenance being performed. Installation Help documents will be forwarded to the Buyer at time of order. The Filterra® Installation, Operation and Maintenance Manual will be made available upon request.

Yours sincerely

Drew Quim  
Stormwater Designer  
CONTECH Engineered Solutions

## PUBLIC STREET LIGHT: DETAIL PROVIDED FROM A.E.P.



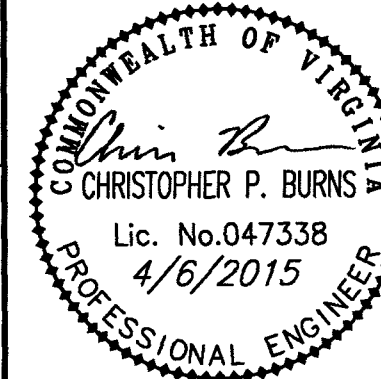
www.balzer.cc

Roanoke  
New River Valley  
Richmond  
Staunton  
Harrisonburg

RESIDENTIAL LAND DEVELOPMENT ENGINEERING  
SITE DEVELOPMENT ENGINEERING  
LAND USE PLANNING & ZONING  
LANDSCAPE ARCHITECTURE  
LAND SURVEYING  
ARCHITECTURE  
STRUCTURAL ENGINEERING  
TRANSPORTATION ENGINEERING  
ENVIRONMENTAL & SOIL SCIENCE  
WETLAND DELINEATIONS & STREAM EVALUATIONS

Balzer and Associates, Inc.

1208 Corporate Circle  
Roanoke, VA 24018  
540-772-9580  
FAX 540-772-8050



**WILLIAMSON & TAZEWELL**  
206 WILLIAMSON ROAD S.E.  
DETAILS B  
CITY OF ROANOKE, VIRGINIA

DRAWN BY BTC  
DESIGNED BY BTC  
CHECKED BY CPB  
DATE 1/16/2015  
SCALE 1"=20'

REVISIONS:  
2/6/2015  
3/4/2015  
3/30/2015  
4/3/2015

APPROVED  
JAPR 17 2015

SHEET NO.

**C10**  
WATERTIGHT  
MANHOLE COVER  
JOB NO. R1400077.00

