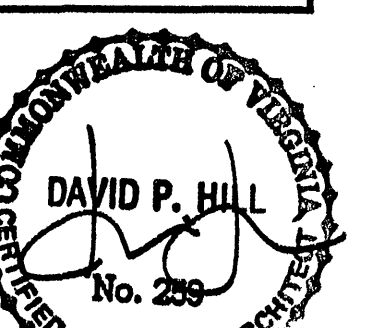


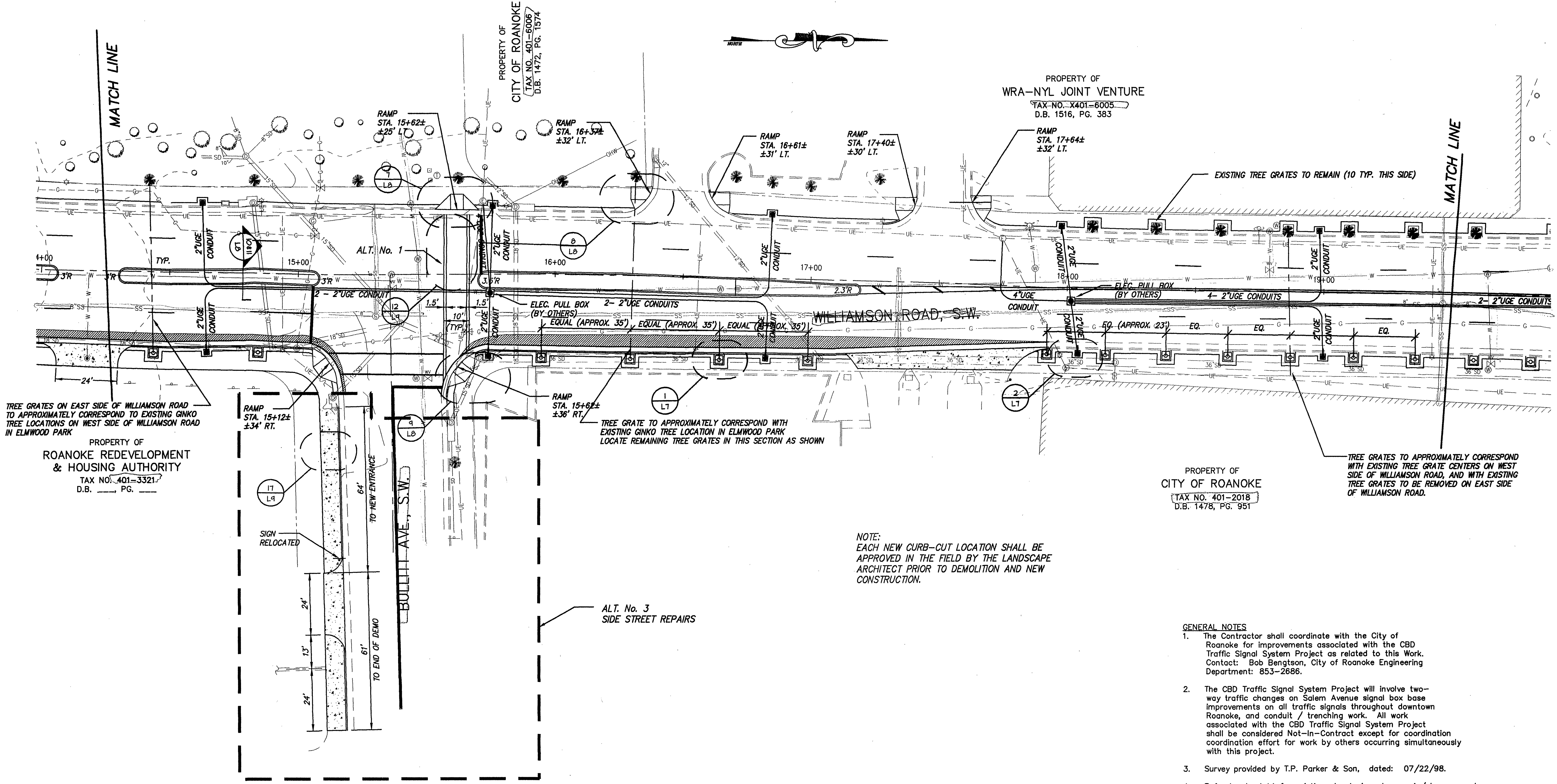
WILLIAMSON ROAD AND CHURCH AVENUE IMPROVEMENTS  
DIMENSIONAL & UTILITY PLAN  
ROANOKE, VA



Date: 03.01.99  
Scale: 1" = 20'-0"  
Revision:

Drawn: JJB  
Project No. 9809

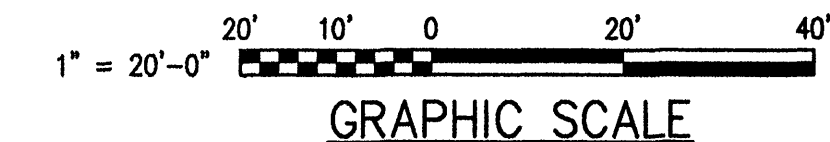
C7



NOTE:  
EACH NEW CURB-CUT LOCATION SHALL BE  
APPROVED IN THE FIELD BY THE LANDSCAPE  
ARCHITECT PRIOR TO DEMOLITION AND NEW  
CONSTRUCTION.

GENERAL NOTES

1. The Contractor shall coordinate with the City of Roanoke for improvements associated with the CBD Traffic Signal System Project as related to this Work. Contact: Bob Bengtson, City of Roanoke Engineering Department: 853-2686.
2. The CBD Traffic Signal System Project will involve two-way traffic changes on Salem Avenue signal box base improvements on all traffic signals throughout downtown Roanoke, and conduit / trenching work. All work associated with the CBD Traffic Signal System Project shall be considered Not-In-Contract except for coordination effort for work by others occurring simultaneously with this project.
3. Survey provided by T.P. Parker & Son, dated: 07/22/98.
4. Refer to sheet L1 for existing street signs to remain/ be removed. Existing signs to remain where concrete is demolished shall be re-installed at the same point along the road, within new sidewalk, unless designated otherwise on sheet L1.



 MICHAEL A. RAKES No. 028199 3-1-99 PROFESSIONAL ENGINEER	 SPECTRUM ENGINEERS, P.C. 325 Mountain Avenue, Roanoke, Virginia 24016, 540-345-8080, FAX 540-345-6883 Member of ACEC Providing Excellence In Engineering		CHECKED HAK SCALE 1" = 20' JOB NO. 98016
	 AMERICAN CONSULTING ENGINEERS COUNCIL		