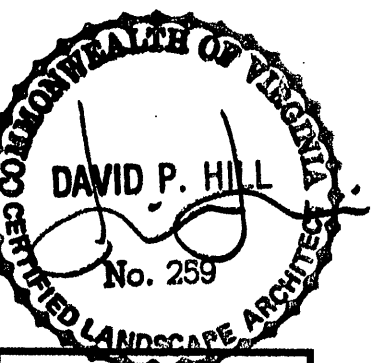


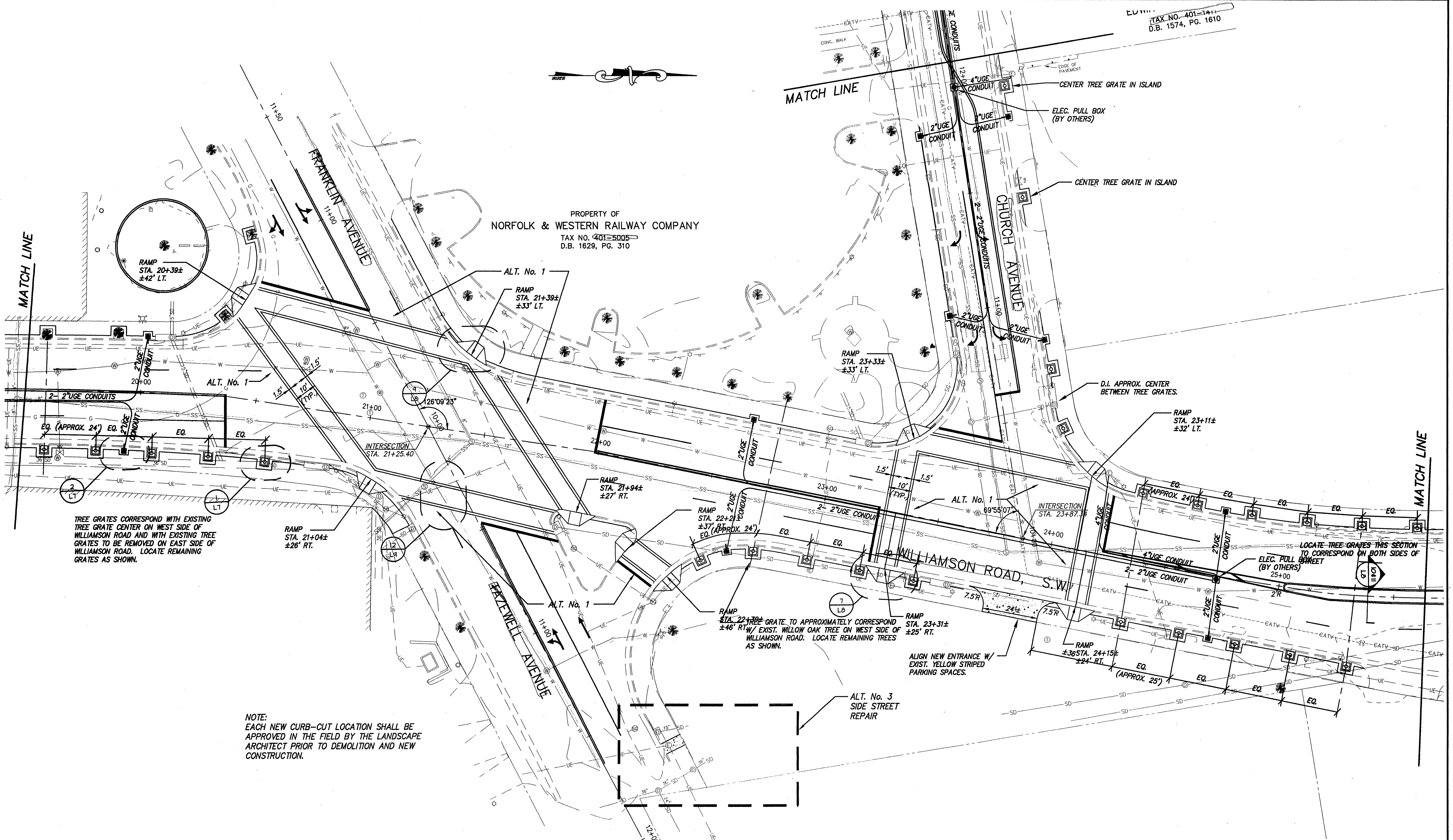
WILLIAMSON ROAD AND CHURCH AVENUE IMPROVEMENTS
DIMENSIONAL & UTILITY PLAN
ROANOKE, VA



Date: 03.01.99
Scale: 1" = 20'-0"
Revisions:

Drawn: JJB
Project No. 9809

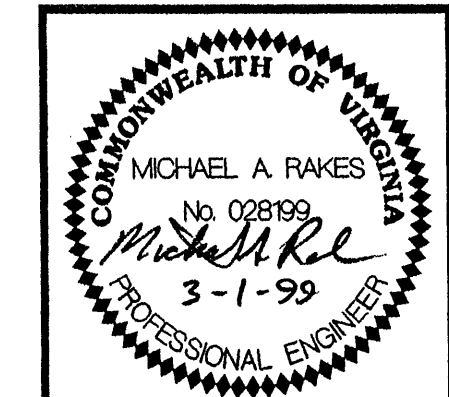
C8



NOTE:
EACH NEW CURB-CUT LOCATION SHALL BE
APPROVED IN THE FIELD BY THE LANDSCAPE
ARCHITECT PRIOR TO DEMOLITION AND NEW
CONSTRUCTION.

GENERAL NOTES

- The Contractor shall coordinate with the City of Roanoke for improvements associated with the CBD Traffic Signal System Project as related to this Work. Contact: Bob Bengtson, City of Roanoke Engineering Department: 853-2686.
- The CBD Traffic Signal System Project will involve two-way traffic changes on Salem Avenue signal box base improvements on all traffic signals throughout downtown Roanoke, and conduit / trenching work. All work associated with the CBD Traffic Signal System Project shall be considered Not-in-Contract except for coordination effort for work by others occurring simultaneously with this project.
- Survey provided by T.P. Parker & Son, dated: 07/22/98.
- Refer to sheet L1 for existing street signs to remain/ be removed. Existing signs to remain where concrete is demolished shall be re-installed at the same point along the road, within new sidewalk, unless designated otherwise on sheet L1.



SPECTRUM
ENGINEERS, P.C.
325 Mountain Avenue, Roanoke, Virginia 24016, 540-345-8020, FAX 540-345-6893
Member of ACEC
Providing Excellence
In Engineering

CHECKED MK	SCALE 1" = 20'	JOB NO. 98016
---------------	-------------------	------------------