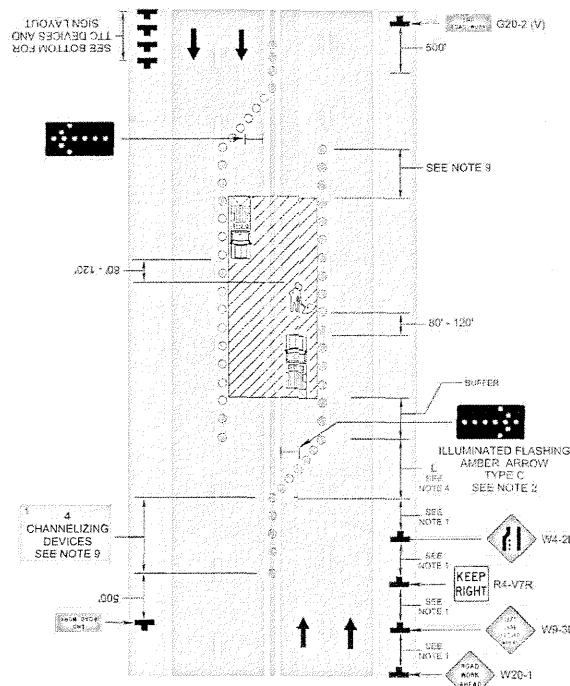


Interior Lane Closure Operation on a Multi-Lane Roadway
(Figure TTC-42.1)



1: Revision 1 - 4/1/2015

17 INTERIOR LANE CLOSURE OPERATION ON A MULTI-LANE ROADWAY DETAIL
SCALE: N.T.S.

Typical Traffic Control
Road Closure Operation with a Detour
(Figure TTC-48.1)

NOTES

Guidance:

- Regulatory traffic control devices should be modified as needed for the duration of the detour.
- Sign spacing distance should be 500'-800' where the posted speed limit is greater than 45 mph, and 350'-500' where the posted speed limit is 45 mph or less. The directional sign should be placed at the intersection.
- If the road is opened for some distance beyond the intersection and/or there are significant origin/destination points beyond the intersection, the ROAD CLOSED LOCAL TRAFFIC ONLY (R11-3a) and DETOUR (M4-10) signs on Type 3 Barricades should be located at the corners of intersecting closed roadway or the traveled way.

Option:

- If the road is open for some distance beyond the intersection the Route Sign Directional assembly may be placed in the travelway as shown to augment or replace the one shown on the corners.
- Flashing warning lights and/or flags may be used to call attention to the advance warning signs.
- Cardinal direction plaques may be used with route signs.

Standard:

- On divided highways having a median wider than 8', right and left sign assemblies shall be required.
- For short-term duration work the M4-9 or M4-V4 series of signs shall be used. For long-term duration work the route shield assembly shall be used with the detour sign.

Option:

- Long-term detours may be signed with a street name (M4-VP1a or M4-Vp1b) plaque above the DETOUR (M4-9 or M4-V4 series) sign (see Figure TTC-34).

Support:

- See Chapter 61 for additional information on incident management traffic control.

Guidance:

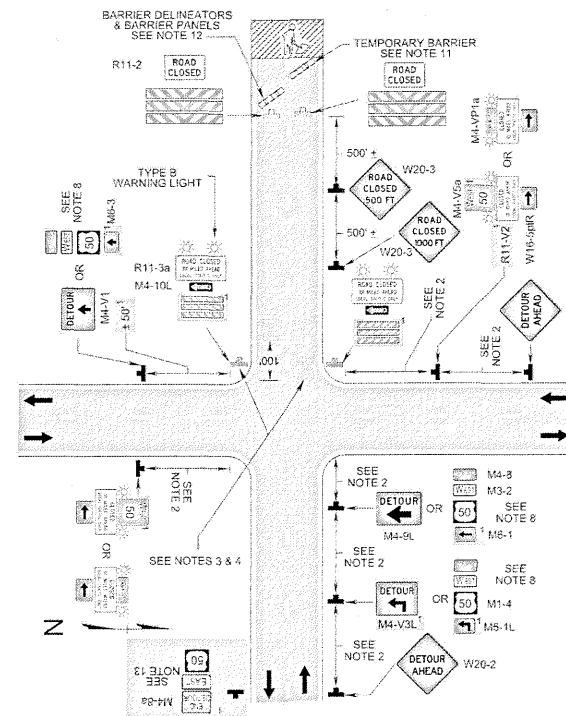
- Temporary barrier should be placed at a 45° angle to the travelway a sufficient distance beyond the Type 3 Barricade but before the work space while providing equipment access to the work space.

Standard:

- Barrier panels 8 inches in width and 12 inches in height shall be placed on top of the temporary concrete barrier, perpendicular to traffic, and spaced 20' on centers along the taper sections. ReflectORIZED surface shall be fluorescent orange prismatic lens sheeting. Barrier delineators shall be installed along the traffic side of the concrete barrier in-between and at the same spacing as the barrier panels approximately 24 inches up from the roadway surface.
- An END DETOUR (M4-8a) sign shall be used with a Cardinal Route shield and a Cardinal Directional sign to terminate the detour route.

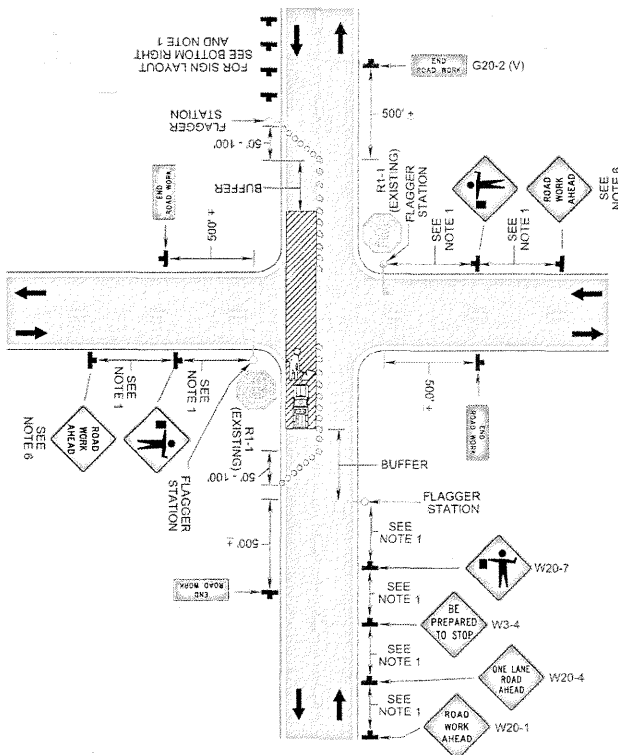
1: Revision 1 - 4/1/2015

Road Closure Operation with a Detour
(Figure TTC-48.1)



18 ROAD CLOSURE OPERATION WITH A DETOUR DETAIL
SCALE: N.T.S.

Lane Closure Operation through an Unsignalized Intersection
(Figure TTC-67.0)



1: Revision 1 - 4/1/2015

19 LANE CLOSURE OPERATION THROUGH UNSIGNALIZED INTERSECTION DETAIL
SCALE: N.T.S.