

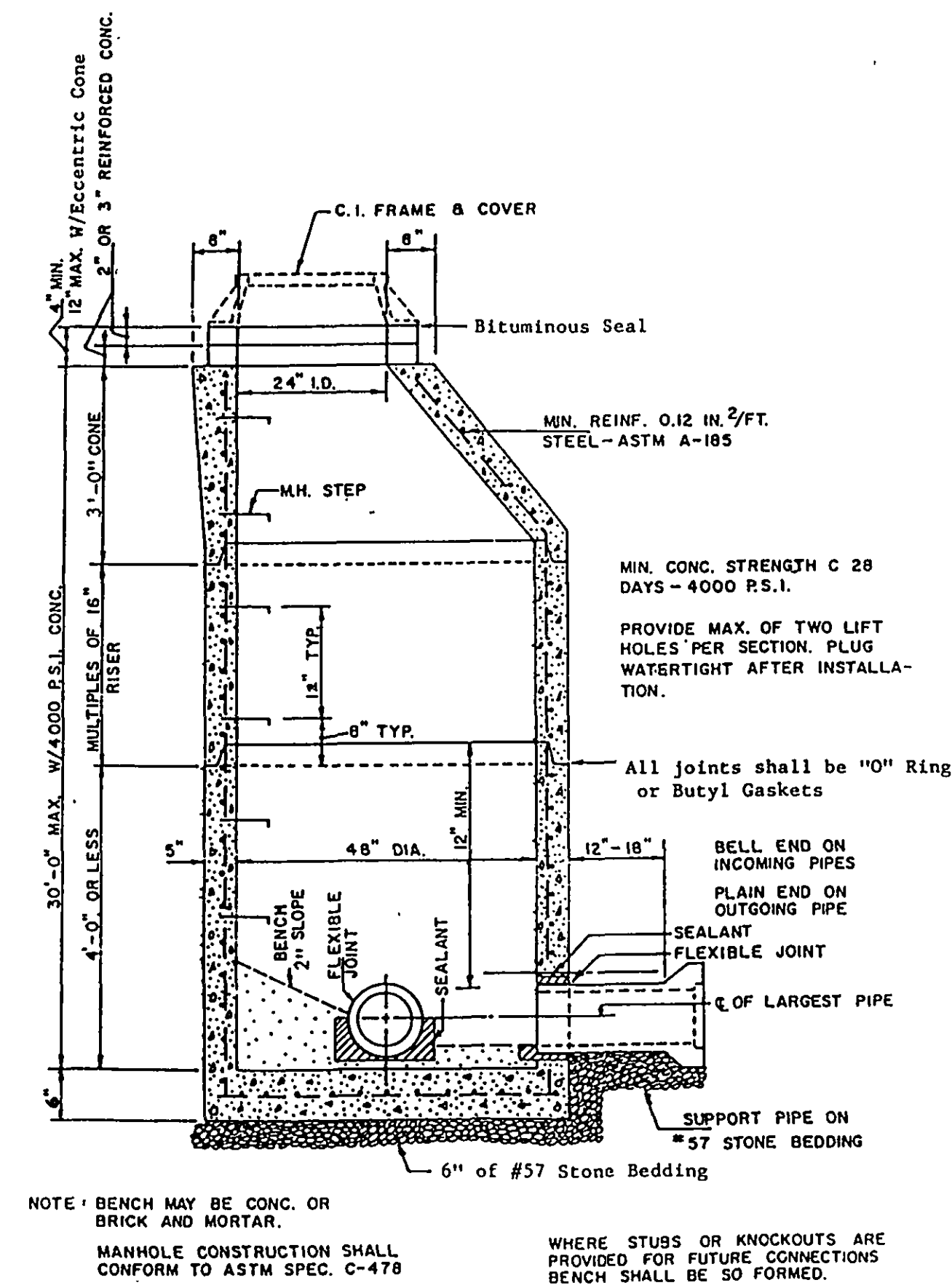
NOTICE:

All Landowners, Developers and Contractors

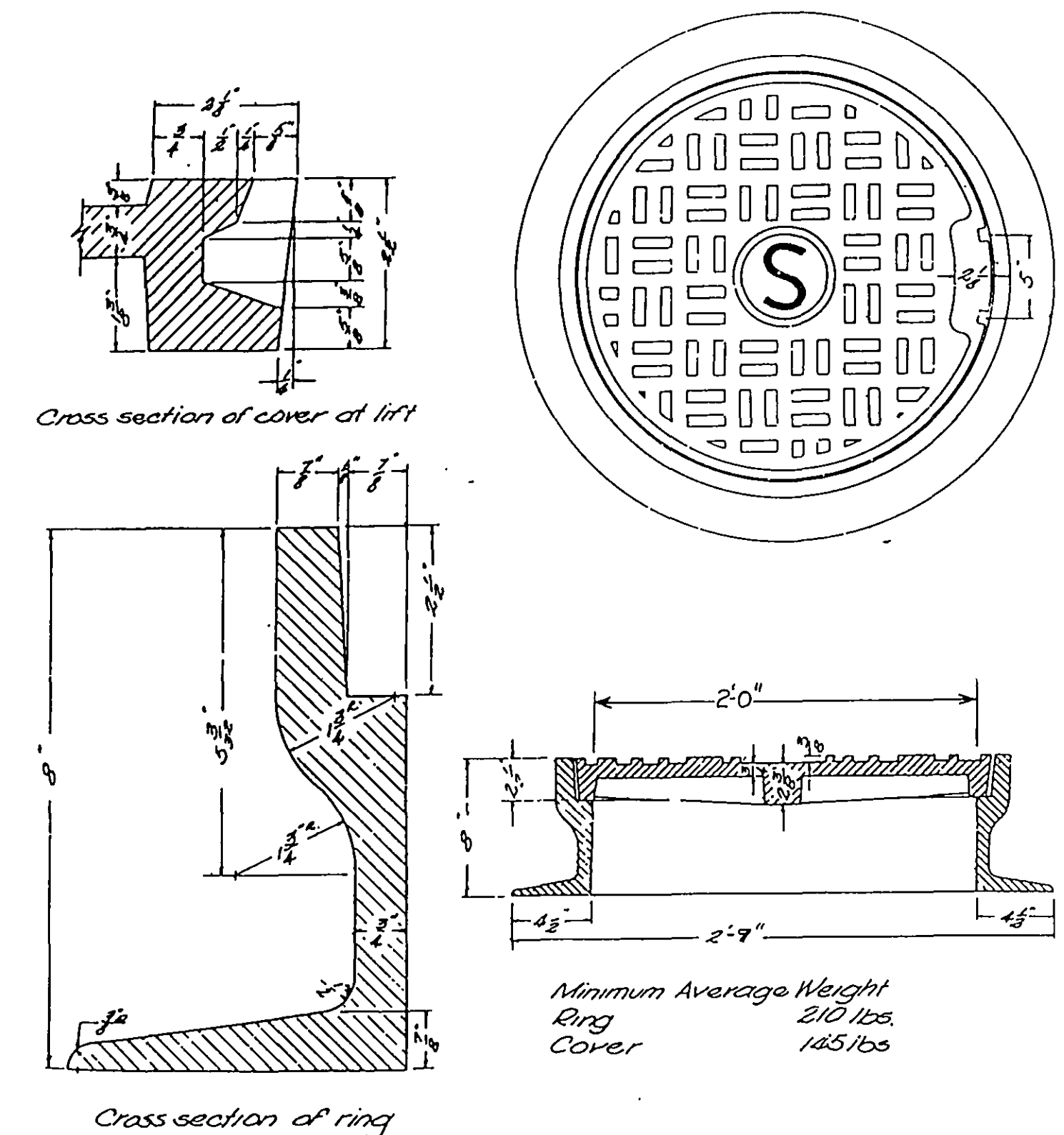
FAILURE TO COMPLY WITH THE CONSTRUCTION PROCEDURE REQUIREMENTS LISTED BELOW MAY RESULT IN THE COSTLY REMOVAL OF STRUCTURES, TIME DELAYS, OR THE ISSUANCE OF A STOP WORK ORDER.

CONSTRUCTION PROCEDURE REQUIREMENTS

1. **City inspections:** To ensure the coordination of timely and proper inspections, a preconstruction conference shall be initiated by the contractor with the City engineering department. Call 703-981-2731 to arrange a conference at least three (3) days prior to anticipated construction.
2. **Street opening permit:** Prior to the commencement of any digging, alteration, or construction within the public right-of-way (streets, alleyways, public easements) a street opening permit shall be applied for and obtained by the contractor from the City of Roanoke.
3. **Plans and permits:** A copy of the plans approved by the city (signed by the proper City officials) and all permits issued by the City shall be available at the construction site at all times of ongoing construction.
4. **Location of utilities:** The contractor shall verify the location of all existing utilities prior to the commencement of any construction.
5. **Construction entrance:** The contractor shall install an adequate construction entrance for all construction-related egress from the site. Size and composition of construction entrance shall be determined by the City site plan inspector.
6. **Streets to remain clean:** It shall be the responsibility of the contractor to maintain the streets adjacent to the construction entrance remains free of mud, dirt, dust, and/or any type of construction materials or litter at all times.
7. **Barricades/ditches:** The contractor shall maintain the integrity of all excavated ditches and shall furnish and ensure that all barricades proper and necessary for the safety of the public are in place.
8. **Sewer and pavement replacement:** Construction of sanitary sewers and the replacement of pavement shall be in accordance with approved standards and specifications of the City of Roanoke.
9. **Approved plans/construction changes:** Any change or variation from construction design as shown on the officially approved plans shall be approved by the City engineer prior to said changes or variations in construction being made.
10. **Final acceptance/city:** The developer or contractor shall furnish the city of Roanoke engineering department with a final correct set of as-built plans prior to final acceptance by the City.

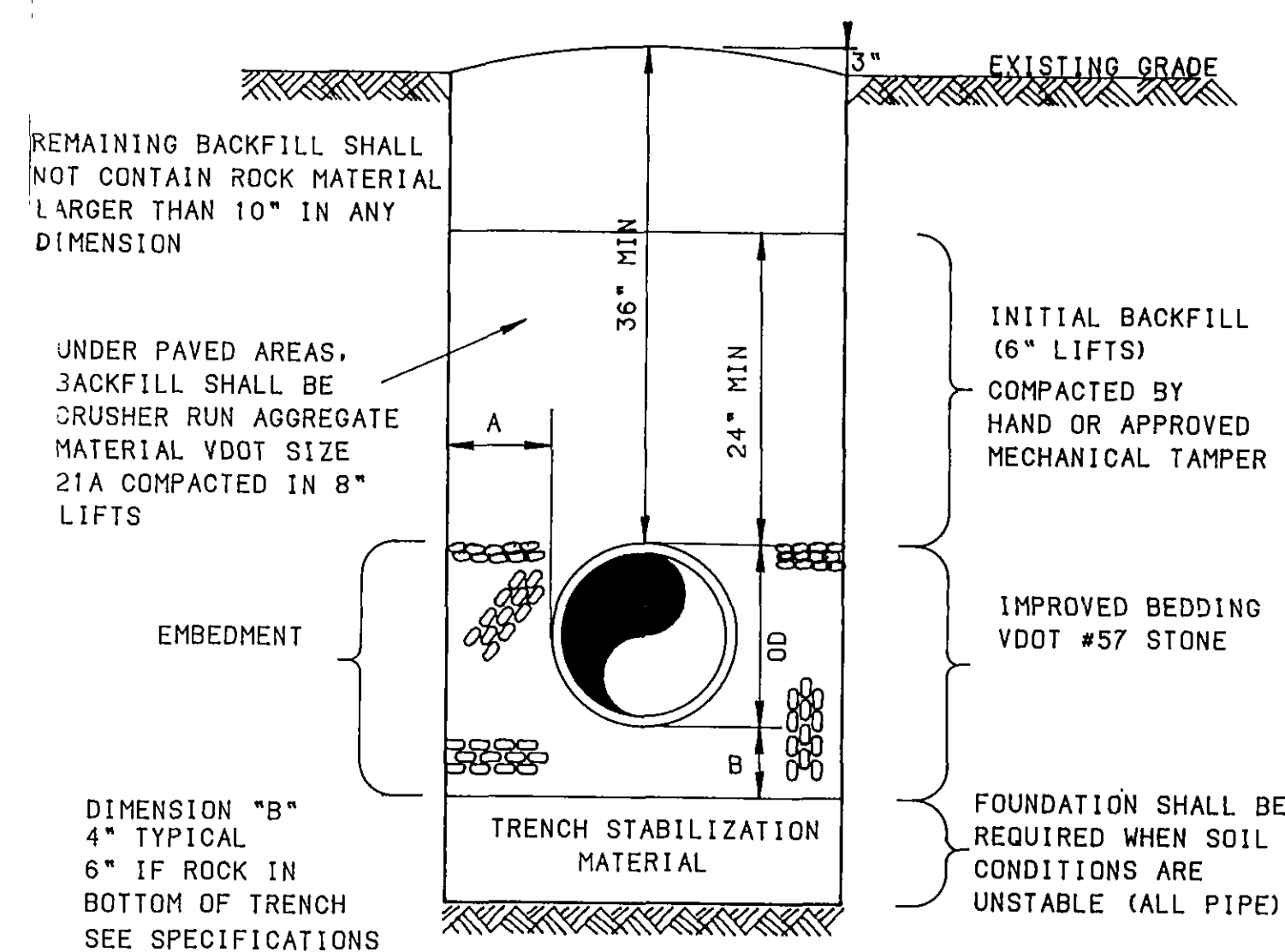


STANDARD MANHOLE DETAIL



MANHOLE FRAME & COVER DETAIL

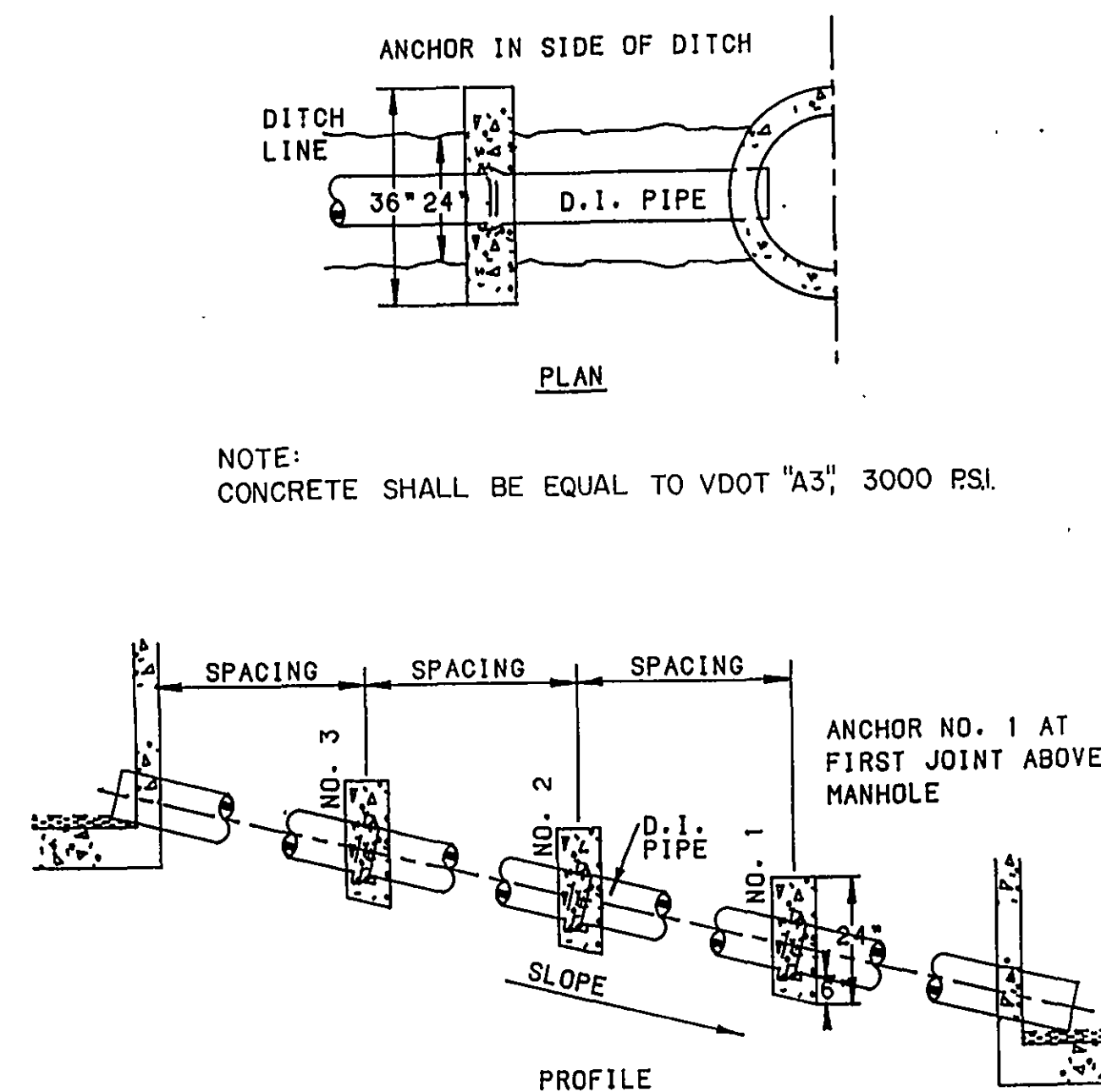
Schedule 40 pvc shall conform to ASTM 1785.



THE MAXIMUM TRENCH WIDTH ($OD + 2A$) SHALL BE MEASURED FROM THE PIPE INVERT TO ONE FOOT ABOVE THE TOP OF PIPE.

DIMENSION "A" SHALL BE 12" WHEN TRENCH IS 10 FEET OR LESS DEEP FROM INVERT OF PIPE, AND 18" WHEN THE TRENCH IS GREATER THAN 10 FEET DEEP.

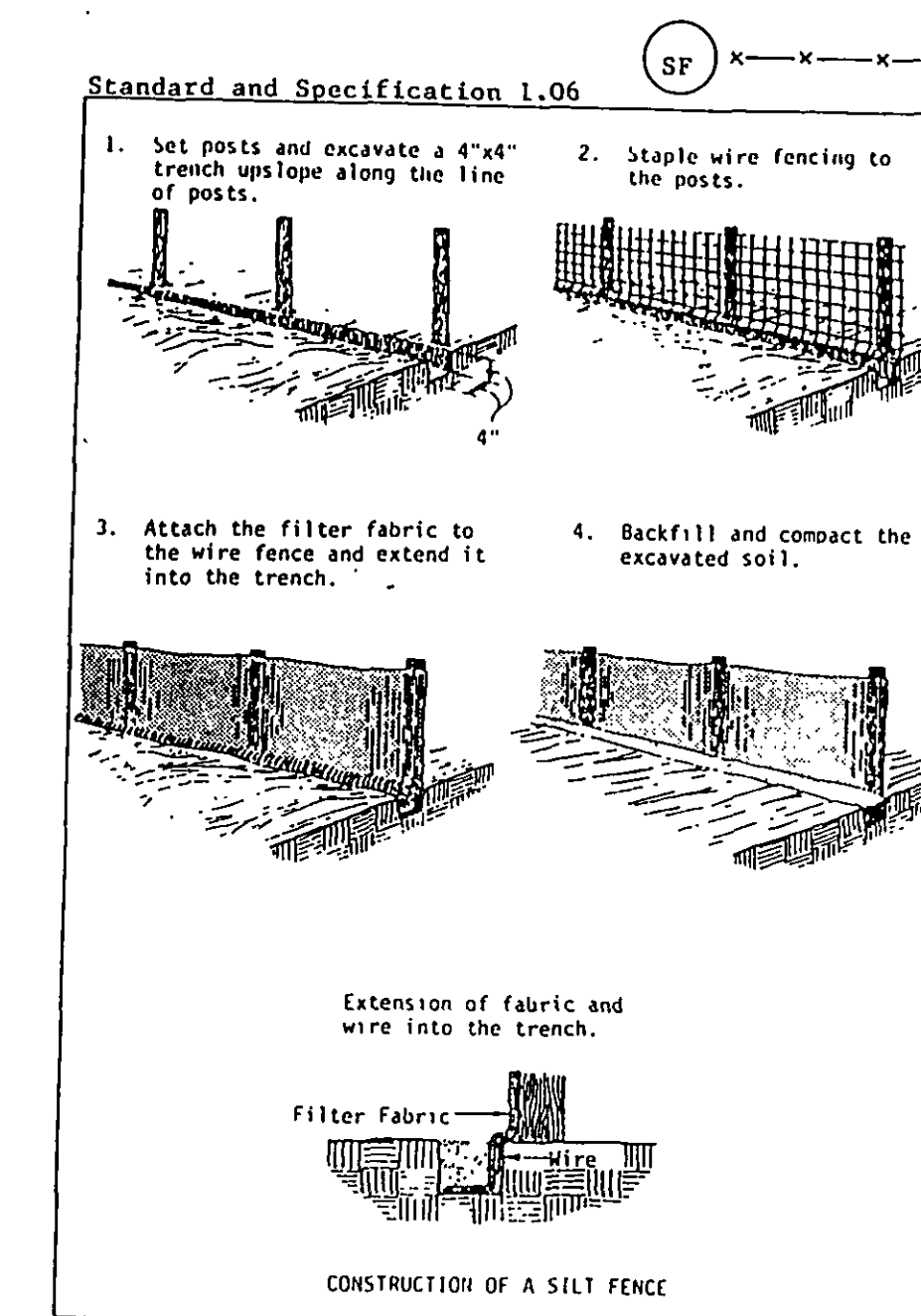
TRENCH DETAIL



NOTE:
CONCRETE SHALL BE EQUAL TO VDOT "A3", 3000 PSI.

<u>GRADE</u>	<u>SPACING</u>
20% TO 35%	NOT OVER 36'
35% TO 50%	NOT OVER 24'
50% OR GREATER	NOT OVER 16'


CONCRETE ANCHOR DETAIL



Note: This detail is from the Virginia Erosion and Sediment Control Handbook-1980. The Contractor shall comply with the design criteria, the construction specification, the maintenance requirements and the removal requirements contained therein for this item.

SILT FENCE DETAIL

WATER DEPARTMENT # 93-07

REV.	DATE	DESCRIPTION			BY APP
DSGN		WOODCLIFF SUBDIVISION STD. DETAILS & GENERAL NOTES CITY OF ROANOKE, VIRGINIA			
DRAWN SMM					
CHKD KDA					
 Mattern & Cralg CONSULTING ENGINEERS SURVEYORS		SCALE NO SCALE	COMM. 1178 NO.		
		DATE: JUNE, 1992	SHEET 3 OF 7		
		DRAWING # D1M2-117B-3			