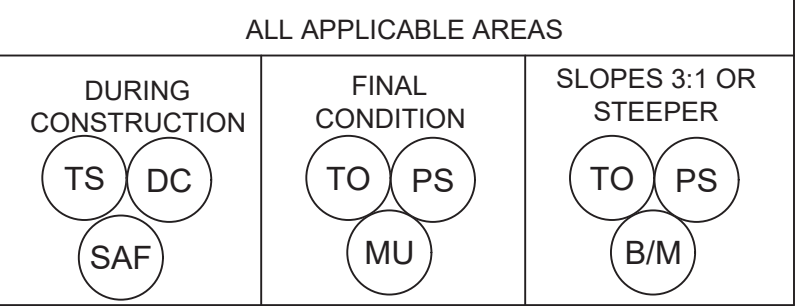


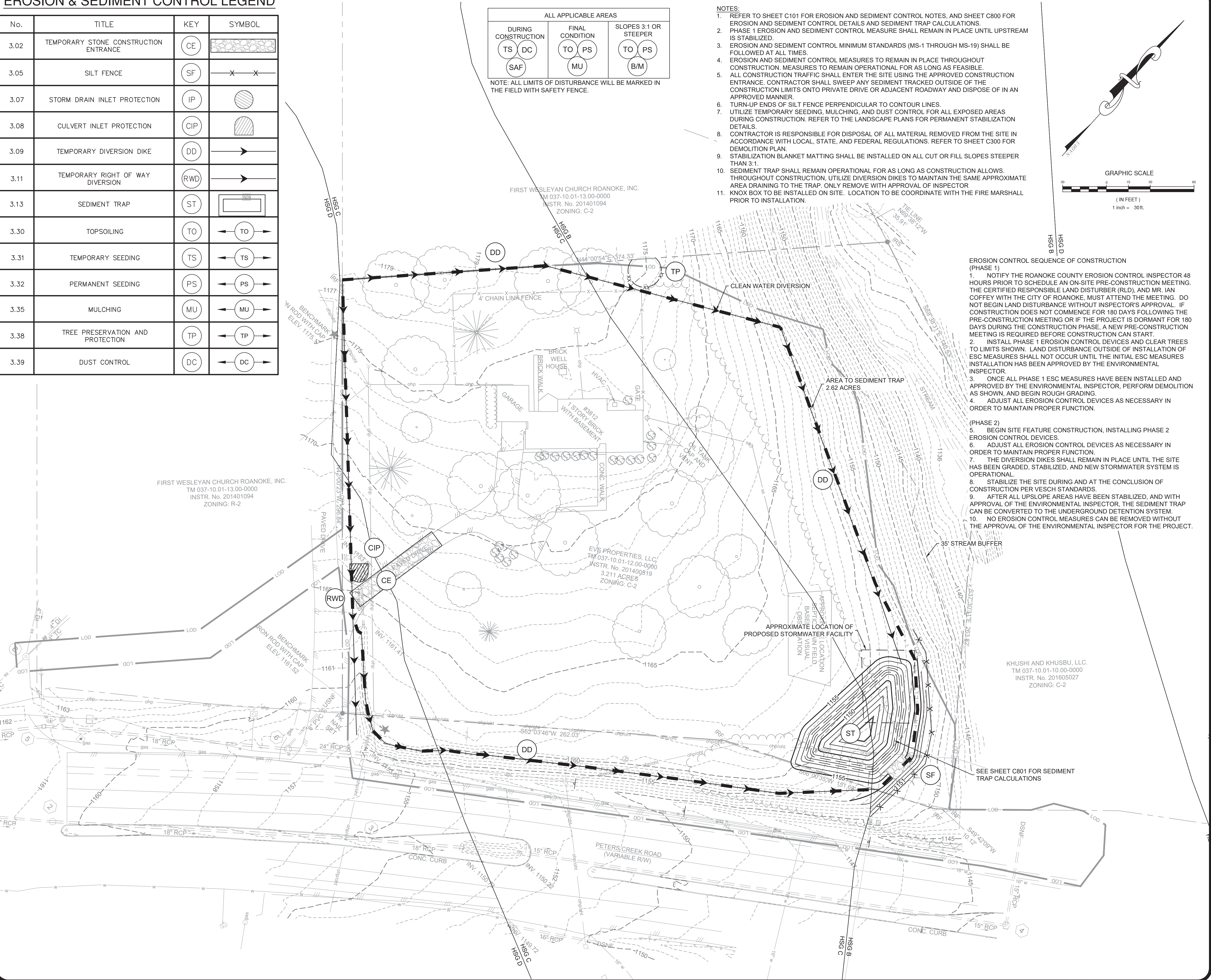
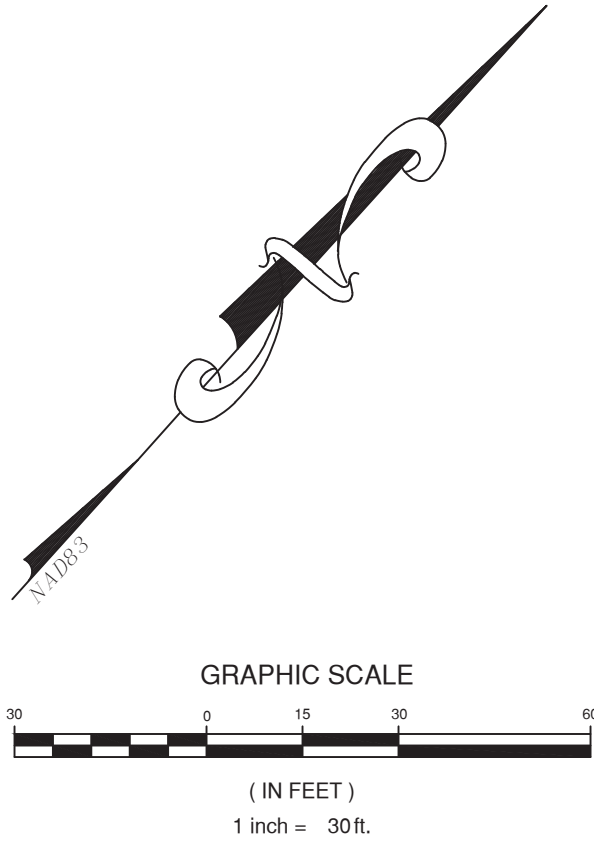
EROSION & SEDIMENT CONTROL LEGEND

No.	TITLE	KEY	SYMBOL
3.02	TEMPORARY STONE CONSTRUCTION ENTRANCE	CE	
3.05	SILT FENCE	SF	
3.07	STORM DRAIN INLET PROTECTION	IP	
3.08	CULVERT INLET PROTECTION	CIP	
3.09	TEMPORARY DIVERSION DIKE	DD	
3.11	TEMPORARY RIGHT OF WAY DIVERSION	RWD	
3.13	SEDIMENT TRAP	ST	
3.30	TOPSOILING	TO	
3.31	TEMPORARY SEEDING	TS	
3.32	PERMANENT SEEDING	PS	
3.35	MULCHING	MU	
3.38	TREE PRESERVATION AND PROTECTION	TP	
3.39	DUST CONTROL	DC	



NOTE: ALL LIMITS OF DISTURBANCE WILL BE MARKED IN THE FIELD WITH SAFETY FENCE.

- NOTES:
1. REFER TO SHEET C101 FOR EROSION AND SEDIMENT CONTROL NOTES, AND SHEET C800 FOR EROSION AND SEDIMENT CONTROL DETAILS AND SEDIMENT TRAP CALCULATIONS.
 2. PHASE 1 EROSION AND SEDIMENT CONTROL MEASURE SHALL REMAIN IN PLACE UNTIL UPSTREAM IS STABILIZED.
 3. EROSION AND SEDIMENT CONTROL MINIMUM STANDARDS (MS-1 THROUGH MS-19) SHALL BE FOLLOWED AT ALL TIMES.
 4. EROSION AND SEDIMENT CONTROL MEASURES TO REMAIN IN PLACE THROUGHOUT CONSTRUCTION. MEASURES TO REMAIN OPERATIONAL FOR AS LONG AS FEASIBLE.
 5. ALL CONSTRUCTION TRAFFIC SHALL ENTER THE SITE USING THE APPROVED CONSTRUCTION ENTRANCE. CONTRACTOR SHALL SWEEP ANY SEDIMENT TRACKED OUTSIDE OF THE CONSTRUCTION LIMITS ONTO PRIVATE DRIVE OR ADJACENT ROADWAY AND DISPOSE OF IN AN APPROVED MANNER.
 6. TURN-UP ENDS OF SILT FENCE PERPENDICULAR TO CONTOUR LINES.
 7. UTILIZE TEMPORARY SEEDING, MULCHING, AND DUST CONTROL FOR ALL EXPOSED AREAS DURING CONSTRUCTION. REFER TO THE LANDSCAPE PLANS FOR PERMANENT STABILIZATION DETAILS.
 8. CONTRACTOR IS RESPONSIBLE FOR DISPOSAL OF ALL MATERIAL REMOVED FROM THE SITE IN ACCORDANCE WITH LOCAL, STATE, AND FEDERAL REGULATIONS. REFER TO SHEET C300 FOR DEMOLITION PLAN.
 9. STABILIZATION BLANKET MATTING SHALL BE INSTALLED ON ALL CUT OR FILL SLOPES STEEPER THAN 3:1.
 10. SEDIMENT TRAP SHALL REMAIN OPERATIONAL FOR AS LONG AS CONSTRUCTION ALLOWS. THROUGHOUT CONSTRUCTION, UTILIZE DIVERSION DIKES TO MAINTAIN THE SAME APPROXIMATE AREA DRAINING TO THE TRAP. ONLY REMOVE WITH APPROVAL OF INSPECTOR
 11. KNOX BOX TO BE INSTALLED ON SITE. LOCATION TO BE COORDINATE WITH THE FIRE MARSHALL PRIOR TO INSTALLATION.



- EROSION CONTROL SEQUENCE OF CONSTRUCTION (PHASE 1)
1. NOTIFY THE ROANOKE COUNTY EROSION CONTROL INSPECTOR 48 HOURS PRIOR TO SCHEDULE AN ON-SITE PRE-CONSTRUCTION MEETING. THE CERTIFIED RESPONSIBLE LAND DISTURBER (RLD), AND MR. IAN COFFEY WITH THE CITY OF ROANOKE, MUST ATTEND THE MEETING. DO NOT BEGIN LAND DISTURBANCE WITHOUT INSPECTOR'S APPROVAL. IF CONSTRUCTION DOES NOT COMMENCE FOR 180 DAYS FOLLOWING THE PRE-CONSTRUCTION MEETING OR IF THE PROJECT IS DORMANT FOR 180 DAYS DURING THE CONSTRUCTION PHASE, A NEW PRE-CONSTRUCTION MEETING IS REQUIRED BEFORE CONSTRUCTION CAN START.
 2. INSTALL PHASE 1 EROSION CONTROL DEVICES AND CLEAR TREES TO LIMITS SHOWN. LAND DISTURBANCE OUTSIDE OF INSTALLATION OF ESC MEASURES SHALL NOT OCCUR UNTIL THE INITIAL ESC MEASURES INSTALLATION HAS BEEN APPROVED BY THE ENVIRONMENTAL INSPECTOR.
 3. ONCE ALL PHASE 1 ESC MEASURES HAVE BEEN INSTALLED AND APPROVED BY THE ENVIRONMENTAL INSPECTOR, PERFORM DEMOLITION AS SHOWN, AND BEGIN ROUGH GRADING.
 4. ADJUST ALL EROSION CONTROL DEVICES AS NECESSARY IN ORDER TO MAINTAIN PROPER FUNCTION.
- (PHASE 2)
5. BEGIN SITE FEATURE CONSTRUCTION, INSTALLING PHASE 2 EROSION CONTROL DEVICES.
 6. ADJUST ALL EROSION CONTROL DEVICES AS NECESSARY IN ORDER TO MAINTAIN PROPER FUNCTION.
 7. THE DIVERSION DIKES SHALL REMAIN IN PLACE UNTIL THE SITE HAS BEEN GRADED, STABILIZED, AND NEW STORMWATER SYSTEM IS OPERATIONAL.
 8. STABILIZE THE SITE DURING AND AT THE CONCLUSION OF CONSTRUCTION PER VESCH STANDARDS.
 9. AFTER ALL UPSLOPE AREAS HAVE BEEN STABILIZED, AND WITH APPROVAL OF THE ENVIRONMENTAL INSPECTOR, THE SEDIMENT TRAP CAN BE CONVERTED TO THE UNDERGROUND DETENTION SYSTEM.
 10. NO EROSION CONTROL MEASURES CAN BE REMOVED WITHOUT THE APPROVAL OF THE ENVIRONMENTAL INSPECTOR FOR THE PROJECT.

Draper Aden Associates
Engineering • Surveying • Environmental Services

2206 South Main Street
Blacksburg, VA 24060
540-552-0444 Fax: 540-552-0291
www.daa.com

• Richmond, VA
• Fayetteville, NC
• Charlottesville, VA
• Northern Virginia
• Hampton Roads, VA
• Virginia Beach, VA

EROSION AND SEDIMENT CONTROL PHASE 1

REVISIONS

DESIGNED BY:	KMJ
DRAWN BY:	DEP
CHECKED BY:	CAH
SCALE:	1"=30'
DATE:	MAY 24, 2021
PROJECT NUMBER:	20010271-010301

C400



3rd Review

New Facility for
WOODSPRING SUITES
3812 Peters Creek Road
Roanoke County, Virginia

SHEET
6
OF
35