

#### GENERAL LANDSCAPE NOTES:

- Contractor shall contact Miss Utility and verify the locations of underground utilities before excavating.
- Contractor shall verify dimensions in the field and report discrepancies to the Landscape Architect/Engineer before setting plant materials.
- Contractor may vary the locations of plant materials slightly based on site conditions to achieve the design intent.
- Plant materials shall be sound, healthy, vigorous plants with a fully developed form typical of the species and variety, and shall conform to the "American Standard for Nursery Stock" of the American Nursery & Landscape Association, ANSI Z60.1-2004.
- All trees shall be single-stem to a minimum height of 4 feet unless otherwise noted.
- In tree planting areas, contractor shall loosen and scarify subsoil to depth of 12 inches and till 6 inches of topsoil into top 6 inches of subsoil. Planting areas shall receive at least 6 additional inches of topsoil to finished grade.
- Contractor shall install plant materials according to the "Standardized Landscape Specifications for the Commonwealth of Virginia", prepared by the Virginia Nursery and Landscape Association and the Virginia Society of Landscape Designers.
- Contractor shall mulch the planting beds and trees with shredded bark mulch to a depth of 4 inches. Remove or kill existing vegetation before placing mulch. Extend mulch at least 4 feet from tree trunks, 2 feet from shrub stems, and to nearby hardscape features. Edges of mulched areas shall be crisp and clean, in smooth, flowing arcs.

#### CITY OF ROANOKE LANDSCAPE REQUIREMENTS:

- Landscape materials and placement shall conform to Section 36.2 Sections 640-649 of the Roanoke City Code.
- The site is zoned CN. Section 36.2-644 does not require any tree canopy coverage.
- Section 36.2-647 requires buffer yard Type C along the Eastern. Type C option 2 features one row of evergreen tree (tree/8LF) and one row of evergreen shrubs (1 shrub/3 LF) in a 15 foot yard. 7 new evergreen trees and 17 evergreen shrubs are provided.
- Section 36.2-649 requires screening of mechanical equipment located on the ground in accordance with Section 36.2-642(c).
- Based on Section 36.2-645 no street yard trees are required.

#### PLANT SCHEDULE

| Key    | Scientific name           | Common name        | Min. size   | Count | Canopy | Total |
|--------|---------------------------|--------------------|-------------|-------|--------|-------|
| AG     | <i>Abelia grandiflora</i> | glossy abelia      | 18-in. tall | 17    | —      | 0     |
| PS     | <i>Pinus strobus</i>      | Eastern White Pine | 5 ft. tall  | 7     | 177    | 1239  |
| Total: |                           |                    |             |       |        | 1239  |

#### E&S MAINTENANCE SCHEDULE

##### CONSTRUCTION ENTRANCE 3.02

The entrance shall be maintained in a condition which will prevent tracking or flood of mud onto public rights-of-way. This may require periodic top dressing with additional stone or the washing and reworking of existing stone as conditions demand and repair and/or cleanup of any structures used to trap sediment. The use of water trucks to remove materials dropped, washed, or tracked onto roadways will not be permitted at any time.

##### SILT FENCE 3.05

Silt fences shall be inspected immediately after each rainfall and at least daily during prolonged rainfall. Close attention shall be paid to the repair of damaged silt fence resulting from end runs and undercutting. Sediment deposits should be removed after each storm event. They must be removed when deposits reach approximately one half the height of the barrier. Any sediment deposits remaining in place after the silt fence is no longer required shall be dressed to conform with the existing grade, prepared and seeded.

##### INLET PROTECTION 3.07

Once an inlet protection has been installed, the structure shall be inspected after each rain and repairs made as needed. Sediment shall be removed and the trap restored to its original dimensions when the sediment has accumulated to one-half the design depth of the trap. Structures shall be removed and the area stabilized when the remaining drainage area has been properly stabilized.

##### TEMPORARY SEEDING 3.31

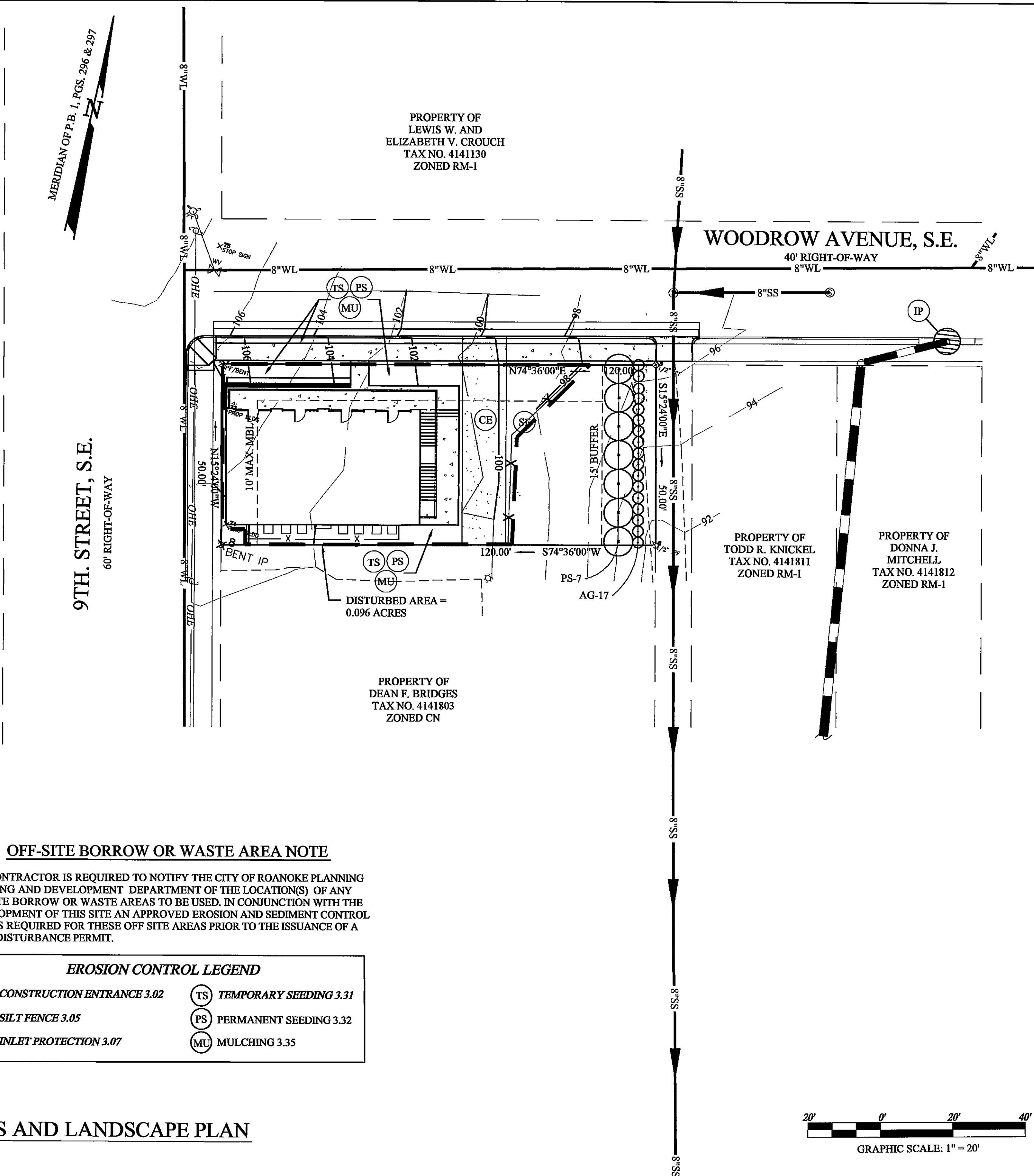
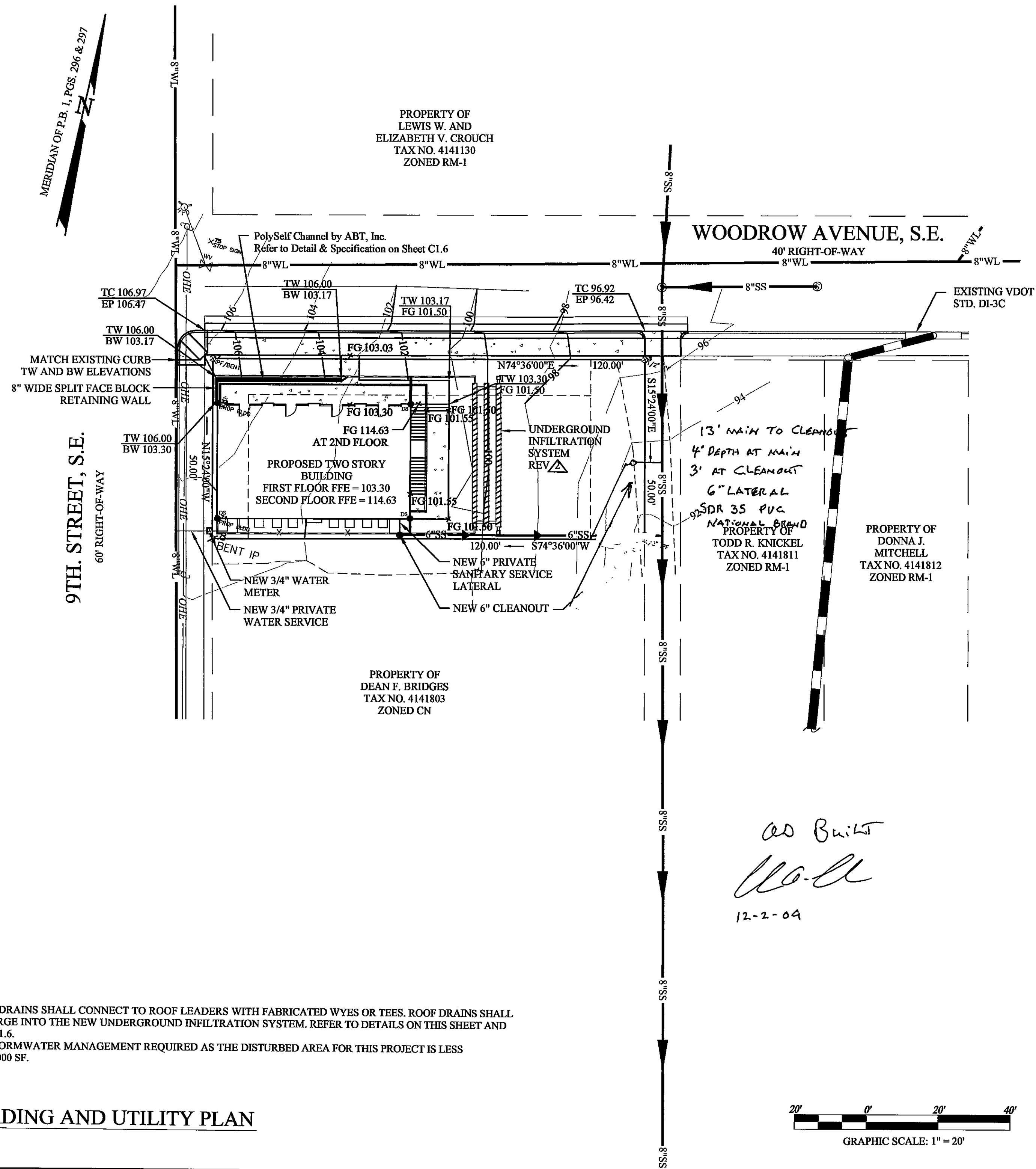
Areas which fail to establish vegetative cover adequate to prevent rill erosion will be re-seeded as soon as such areas are identified.

##### PERMANENT SEEDING 3.32

In general, a stand of vegetation cannot be determined to be fully established until it has been maintained for one full year after planting. Inspect seeded areas for failure and make necessary repairs and re-seedings within the same season, if possible. If a stand has less than 40% cover, re-evaluate choice of plant materials quantities of lime and fertilizer. Re-establish the stand following seeded preparation and seeding requirements.

##### MULCHING 3.35

All mulches and soil coverings should be inspected periodically (particularly after rainstorms) to check for erosion. Where erosion is observed in mulched areas, additional mulch should be applied. Nets and mats should be inspected after rainstorms for dislocation or failure. If washouts or breakage occur, re-install netting or matting, as necessary after repairing damage to the slope or ditch. Inspections should take place up until grasses area firmly established. Where mulch is used in conjunction with ornamental plantings, inspect periodically throughout the year to determine if mulch is maintaining coverage of the soil surface; repair as needed.

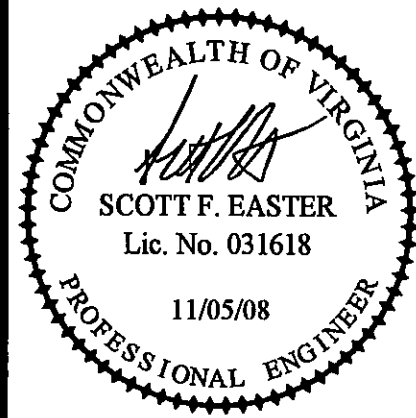


#### OFF-SITE BORROW OR WASTE AREA NOTE

THE CONTRACTOR IS REQUIRED TO NOTIFY THE CITY OF ROANOKE PLANNING BUILDING AND DEVELOPMENT DEPARTMENT OF THE LOCATION(S) OF ANY OFF-SITE BORROW OR WASTE AREAS TO BE USED. IN CONJUNCTION WITH THE DEVELOPMENT OF THIS SITE AN APPROVED EROSION AND SEDIMENT CONTROL PLAN IS REQUIRED FOR THESE OFF SITE AREAS PRIOR TO THE ISSUANCE OF A LAND DISTURBANCE PERMIT.

#### EROSION CONTROL LEGEND

|                               |                           |
|-------------------------------|---------------------------|
| CE CONSTRUCTION ENTRANCE 3.02 | TS TEMPORARY SEEDING 3.31 |
| SF SILT FENCE 3.05            | PS PERMANENT SEEDING 3.32 |
| IP INLET PROTECTION 3.07      | MU MULCHING 3.35          |



**ACS DESIGN**

ENGINEERING • SURVEYING  
LANDSCAPE ARCHITECTURE  
CONSTRUCTION MANAGEMENT

2203 PETERS CREEK ROAD  
ROANOKE, VIRGINIA 24017  
P 540.562.2345 F 562.2344  
INFO@ACSDSIGNLLC.COM  
WWW.ACSDSIGNLLC.COM

**ZAQS MORNINGSIDE PLAZA**  
**1602 9TH STREET, SE**  
**ROANOKE, VIRGINIA**

© ACS DESIGN, LLC - Material excluded herein is covered by copyright. Use of this work in whole or in part is strictly forbidden without the expressed written consent of ACS DESIGN, LLC.

|              |             |
|--------------|-------------|
| DRAWN BY:    | CLK         |
| DESIGNED BY: | CLK         |
| CHECKED BY:  | SFE         |
| DATE:        | 13 MAY 2008 |
| JOB NUMBER:  | 06028       |

|            |                             |
|------------|-----------------------------|
| REVISIONS: |                             |
| No. 1      | 18 AUGUST 2008              |
| No. 2      | PER ROANOKE CITY COMMENTS   |
| No. 3      | 04 NOVEMBER 2008            |
| No. 4      | INFILTRATION SYSTEM UPDATES |

SHEET NO.:

C1.3

GRADING, UTILITY,  
E&S, AND  
LANDSCAPE PLAN