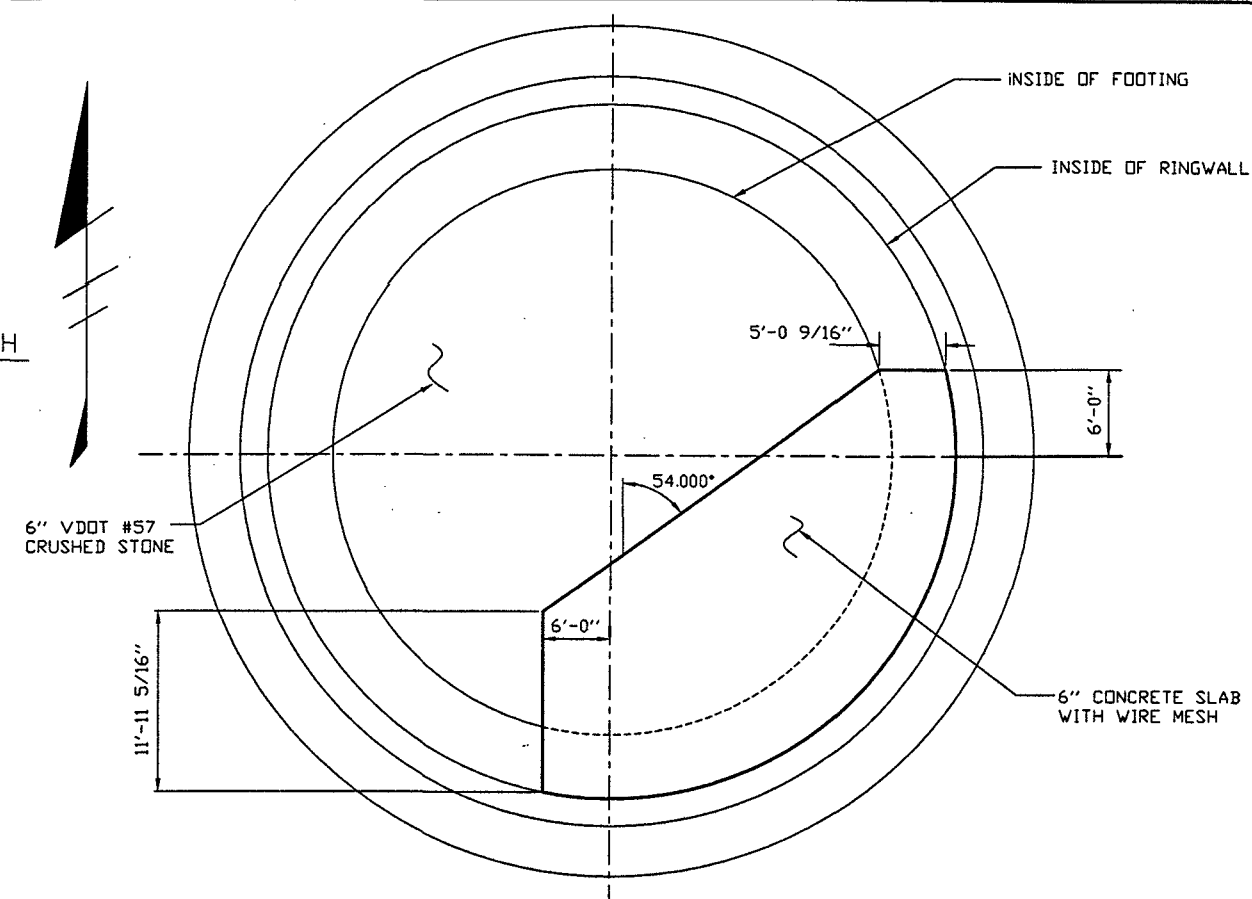
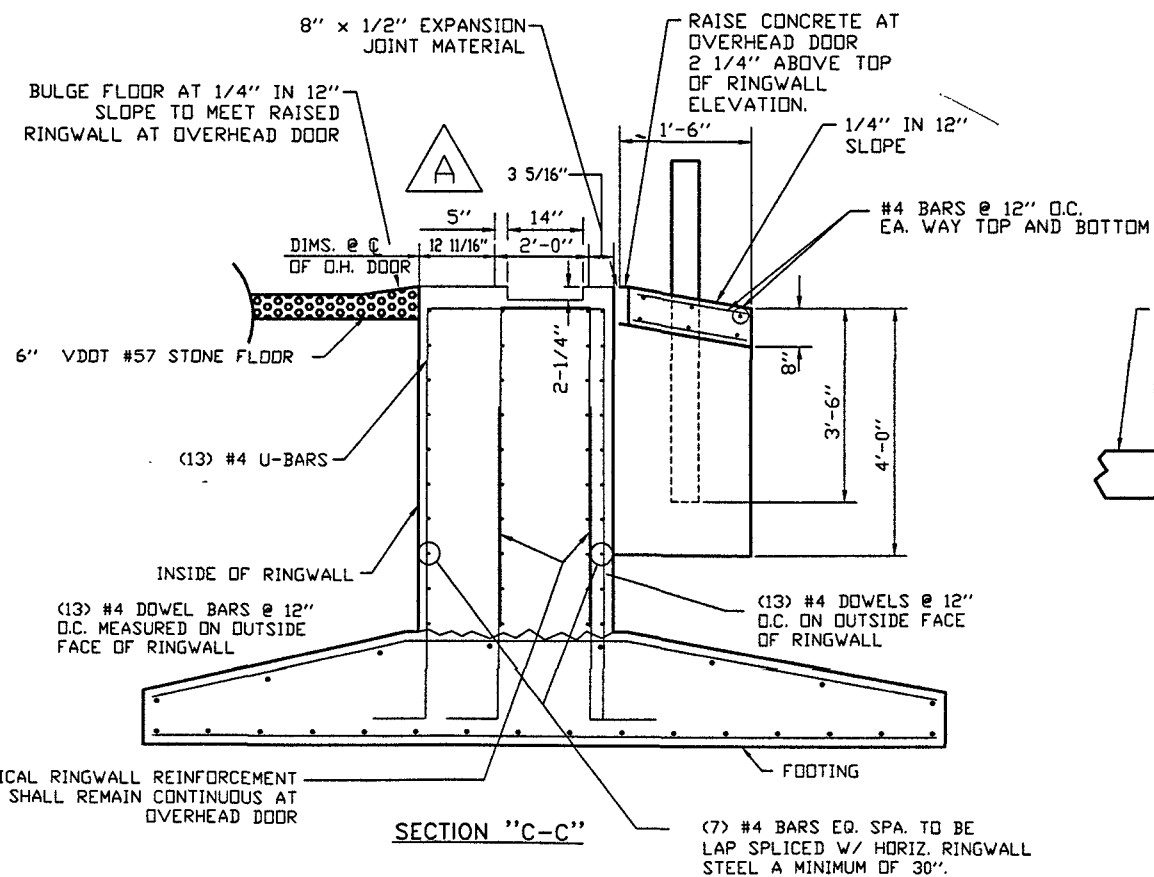


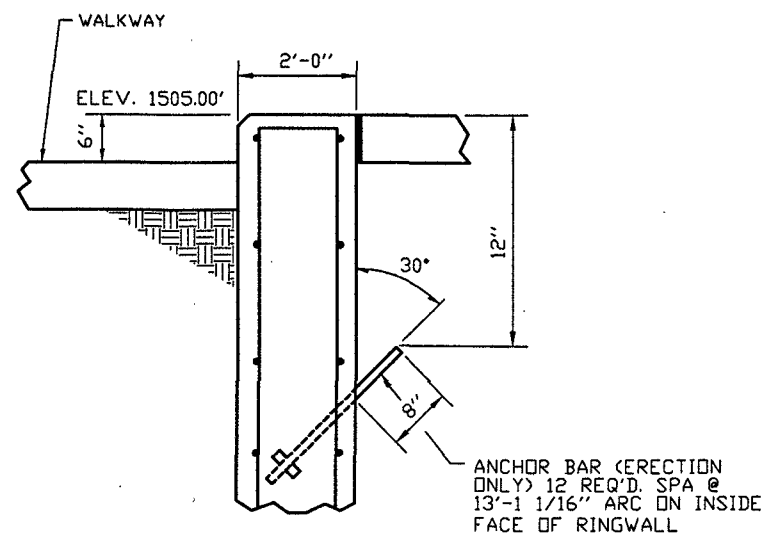
NORTH



CONCRETE FLOOR PLAN

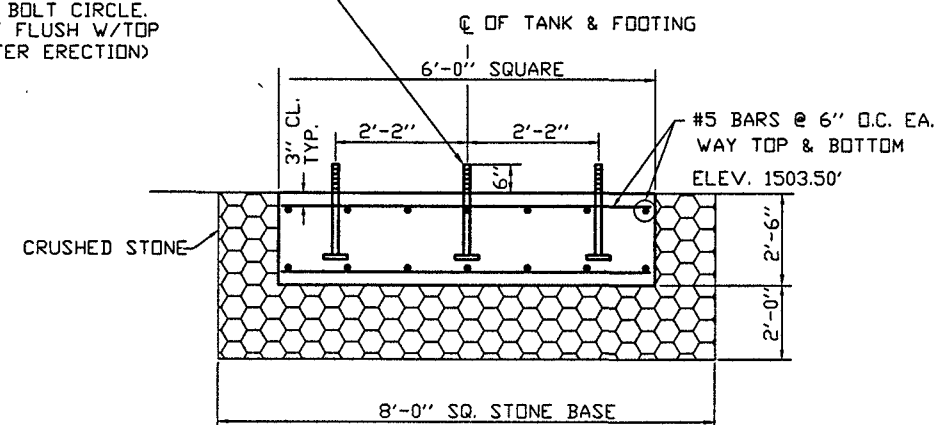


SECTION "C-C"



FOUNDATION SECTION "B-B"

(4) 1 1/4" DIA. ANCHOR BOLTS ON A 4'-4" DIA. BOLT CIRCLE. (TO BE BURNED OFF FLUSH W/TOP OF CONCRETE AFTER ERECTION)



ERECTION MAST FOOTING

NOTE: TOP OF FOOTING TO BE PLACED 18" BELOW TOP OF CONCRETE FLOOR SLAB.

REV.	BY:	DATE	REMARKS
A	GAB	7-6	AS NOTED
CALDWELL TANKS, INC.			
LOUISVILLE, KY. 40219			
1,000,000 GALLON FLUTED COLUMN			
BOTETOURT COUNTY, VIRGINIA			
BY:	BAW	TITLE:	MISCELLANEOUS DETAILS
DATE:	4-98	DRAWING NO.:	E-4291 F2 OF 4