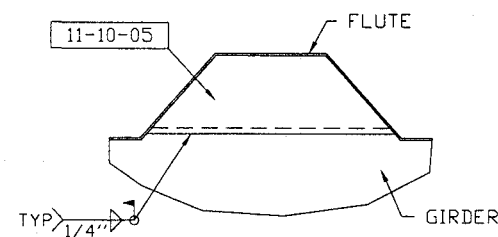
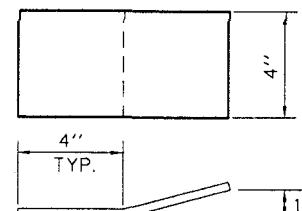
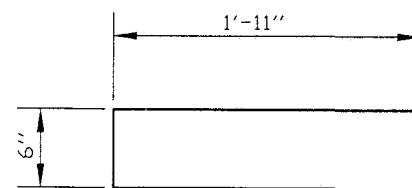
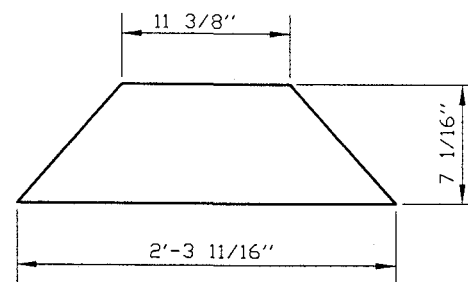
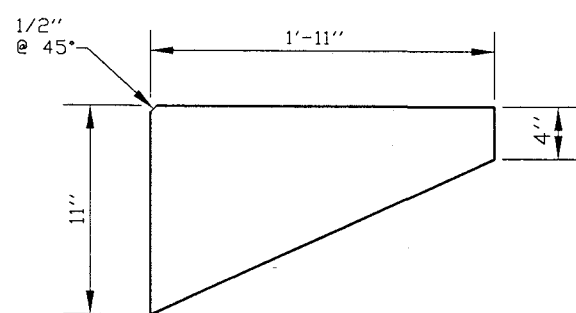


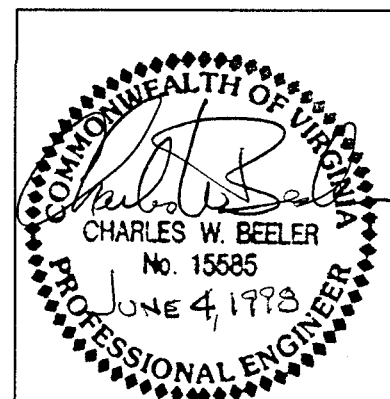
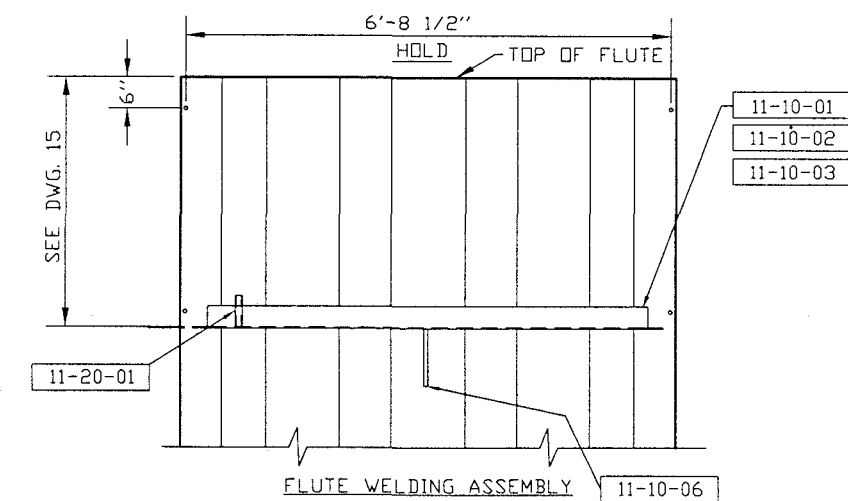
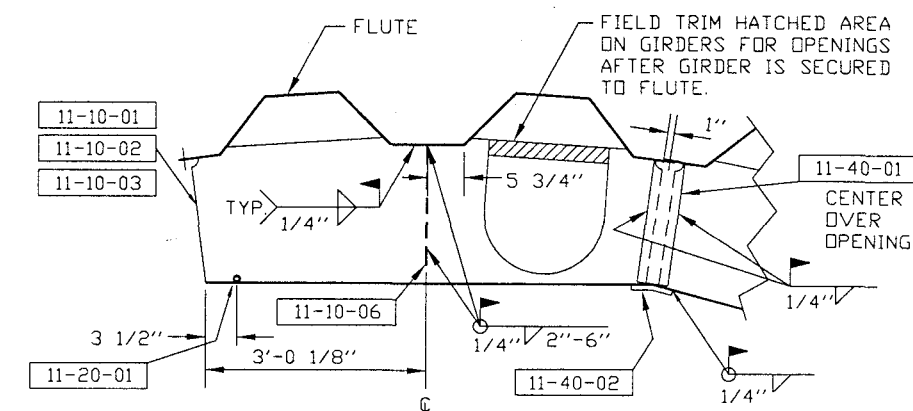
- | | |
|----------|----------------------------------|
| 11-10-01 | WITHOUT OPENING, BEND AS SHOWN |
| 11-10-02 | WITH OPENING, BEND AS SHOWN |
| 11-10-03 | WITH OPENING, BEND OPPOSITE HAND |



FILLER PLATES MUST BE IN PLACE
BEFORE LADDERS ARE MOUNTED.

FOR GIRDER LEVELS 2 AND 3
INSTALL FILLER PLATE TO ALL GIRDER
OPENINGS WITHIN RAILINGS EXCEPT FOR
THOSE IN WHICH A LADDER WILL PASS
THROUGH. FOR GIRDER LEVEL 1 (CONDENSATE
CEILING LEVEL), INSTALL FILLER PLATES TO
ALL GIRDER OPENINGS EXCEPT THE LADDER
OPENING.

BILL OF MATERIAL					
SUB-ASSY NO	PART NO	QTY	DESCRIPTION	MAT'L. REQ'D.	PC. WT.
ALL ITEMS LISTED BELOW SHIP LOOSE					
<div>A</div>	11-10-01	69	GIRDER SEGMENT	1/4" PL.	200
	11-10-02	2	GIRDER SEGMENT	USE DROP FROM 11-10-01	200
	11-10-03	1	GIRDER SEGMENT	USE DROP FROM 11-10-01	200
	11-20-01	72	POST SOCKET	1" SCH 40 PIPE x 6"	
	11-10-05	50	FLUTE FILLER PLATE	1/4" PL. (MISC. DROP)	16
	11-10-06	72	GIRDER GUSSET	1/4" PL. (MISC. DROP)	13
	11-40-01	72	GIRDER TIE BAR	6" x 1/4" BAR x 23"	10
	11-40-02	72	GIRDER SPLICE BAR	4" x 1/4" BAR x 8" LG.	3



A	PLN	7-6	AS NOTED
REV.	BY:	DATE	REMARKS
<p>CALDWELL TANKS, INC.</p> <p>LOUISVILLE, KY.</p>			
<p>BOTETOURT COUNTY, VA</p>			
BY:	BAW <i>✓TB</i>		TITLE:
		GIRDER DETAILS	
DATE:	5-98		DRAWING NO.:
		E-4291	